

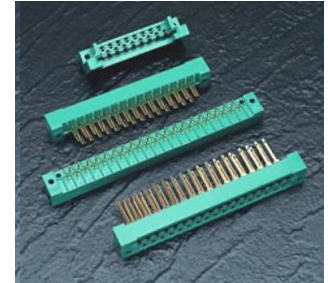
415/438 SERIES



METAL TO METAL CARD EDGE CONNECTORS

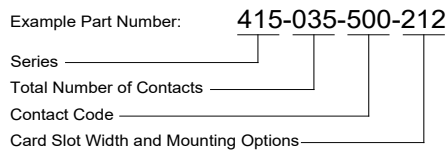
Features:

- 0.200" (5.08mm) contact spacing x 0.125" (3.18mm) row spacing with staggered grid
- Accepts 0.062" (1.57mm) or 0.093" (2.36mm) nominal thickness P.C. board
- Edacon hermaphroditic contact mating design
- Contact termination options include crimp, P.C. tail, wire hole and wire wrap
- Open or closed card slot ends, card guides optional
- Accepts polarizing keys without loss of contact position
- 415 Series without card guides designed to mate with 421 Series, 415 Series with card guides designed to mate with 422 Series, 438 Series designed to mate with 423 Series
- RoHS Compliant



Specifications:

| | |
|---------------------------------|--|
| Insulator Material | UL 94V-0 Diallyl Phthalate, Green Color |
| Contact Material | Copper Alloy |
| Contact Plating | Gold Plating over Nickel over entire contact |
| Current Rating | 10 amps |
| Contact Resistance | 10 milliohms maximum |
| Dielectric Withstanding Voltage | 2000 V AC rms at sea level |
| Insulation Resistance | 5000 megaohms minimum |
| Operating Temperature | -65°C to +125°C |
| Insertion Force | 2 to 16 oz (0.56 to 4.45 N) per contact position |
| Withdrawal Force | 2 to 16 oz (0.56 to 4.45 N) per contact position |



| Code: | Card Slot Width: | Mounting Options: |
|-------|--------------------------|---|
| 112 | Accepts .062(1.57) Board | .128(3.25)Dia.Mounting Holes |
| 122 | Accepts .093(2.36) Board | .128(3.25)Dia.Mounting Holes |
| 212 | Accepts .062(1.57) Board | .128(3.25)Dia.Mounting Holes With Card Guides |
| 222 | Accepts .093(2.36) Board | .128(3.25)Dia.Mounting Holes With Card Guides |

| Series: | Insulator Color: |
|---------|-----------------------|
| 415 | Closed Card Slot Ends |
| 438 | Open Card Slot Ends |

Total Number of Contacts:
017, 023, 029, 035, 041 or 047

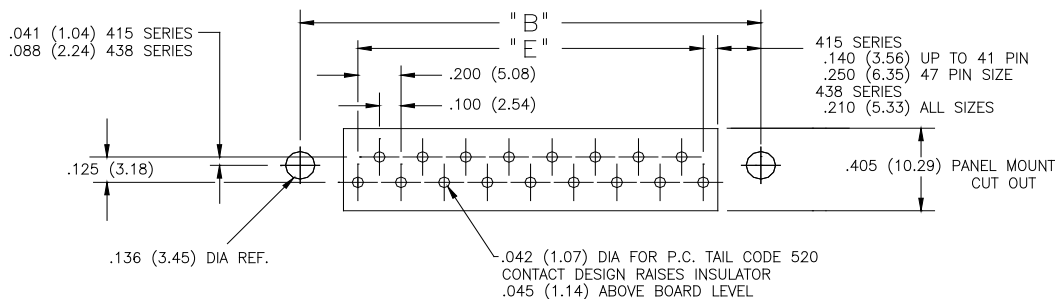
| Contact Code: | Tail Description: | Tail Size: | Tail Length "G": |
|---------------|-----------------------|---------------------------|------------------|
| 000 | No Contacts Assembled | | |
| 500 | Wire Hole | .110 x .024 (2.79 x 0.61) | .245 (6.22) |
| 520 | P.C. Tail | .025 x .024 (0.64 x 0.61) | .215 (5.46) |
| 540 | Wire Wrap | .050 x .024 (1.27 x 0.61) | .600 (15.24) |
| 541 | Wire Wrap | .026 x .024 (0.66 x 0.61) | .620 (15.70) |
| 542 | Wire Wrap | .050 x .024 (1.27 x 0.61) | .790 (20.07) |

Ordering Code Notes:

Crimp contacts are also available for the 415 and 438 series connectors. Contacts may be ordered separately for pre-wired or select position assembly.

| Part Number | Description | Silhouette |
|-------------|-------------------------------|------------|
| 516-290-500 | Wire Hole | |
| 516-290-520 | P.C. Tail | |
| 516-290-540 | Wire Wrap | |
| 516-290-541 | Wire Wrap | |
| 516-290-542 | Wire Wrap | |
| 516-290-590 | Crimp (Loose) | |
| 516-294-571 | Crimp - 1800 Contact Per Reel | |

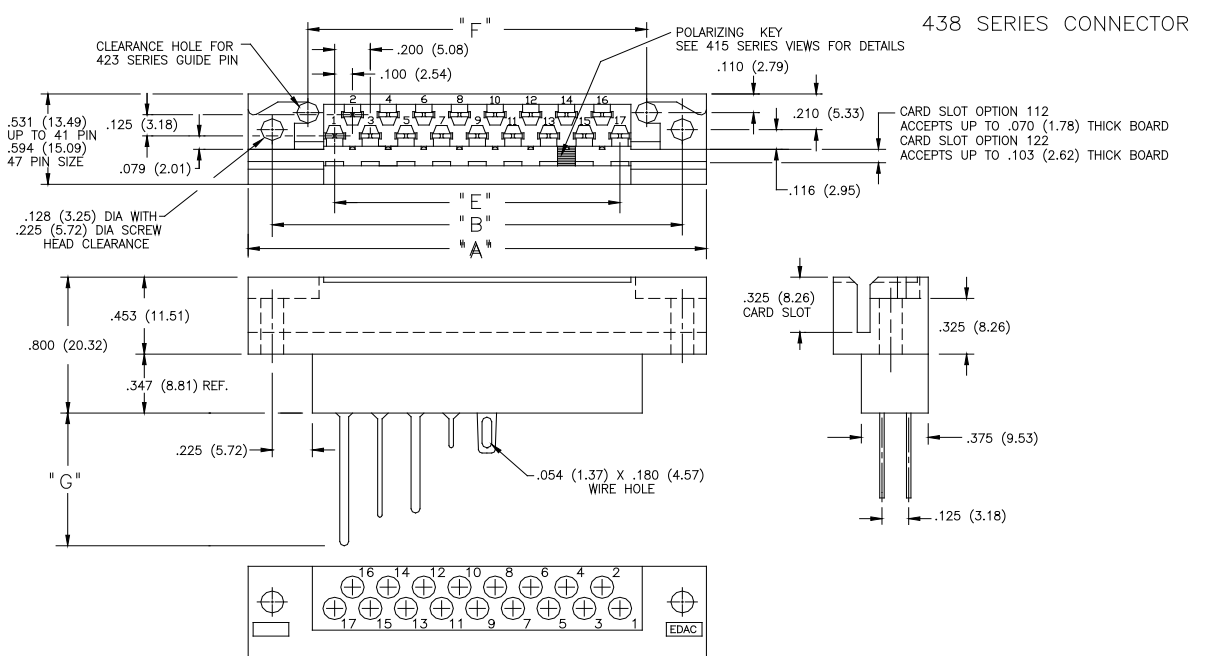
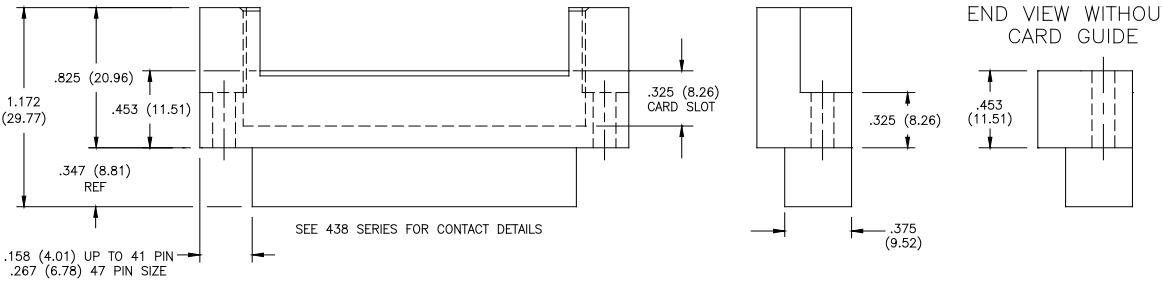
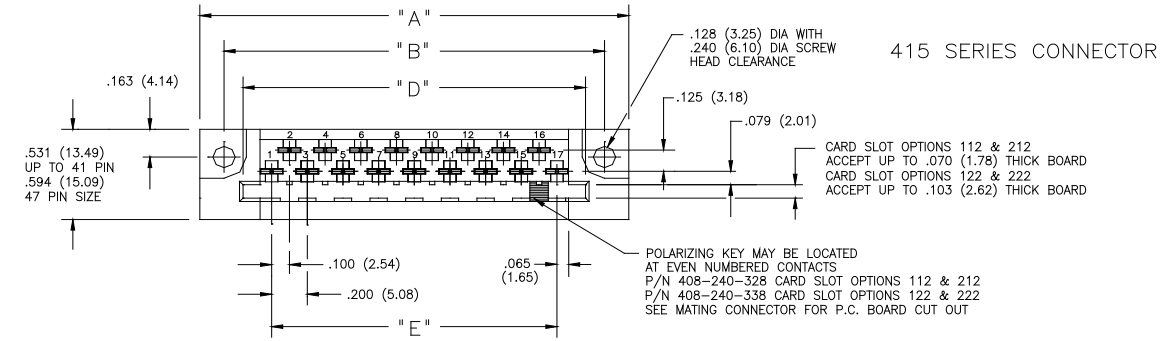
For contact installation, removal and crimping tools, Please contact EDAC. Mounting Options 212 and 222 are available on the 415 series connectors only.



CONNECTOR MOUNTING PATTERN FOR 415 & 438 SERIES

415/438 SERIES

METAL TO METAL CARD EDGE CONNECTORS



| NUMBER OF CONTACTS | "A" | | "B" | | "D" | | "E" | | "F" | | | | | |
|--------------------|-------|--------|-------|--------|-------|--------|-------|--------|----------|--------|-------|--------|-------|--------|
| | inch | mm | inch | mm | inch | mm | inch | mm | inch | mm | | | | |
| | 415 | | 438 | | 415 | | 438 | | 415, 438 | | 438 | | | |
| 17 | 2.406 | 61.11 | 2.570 | 65.28 | 2.134 | 54.20 | 2.300 | 58.42 | 1.920 | 48.77 | 1.600 | 40.64 | 1.900 | 48.26 |
| 23 | 3.006 | 76.35 | 3.170 | 80.52 | 2.734 | 69.44 | 2.900 | 73.66 | 2.520 | 64.01 | 2.200 | 55.88 | 2.500 | 63.50 |
| 29 | 3.606 | 91.59 | 3.770 | 95.76 | 3.334 | 84.68 | 3.500 | 88.90 | 3.120 | 79.25 | 2.800 | 71.12 | 3.100 | 78.74 |
| 35 | 4.206 | 106.83 | 4.370 | 111.00 | 3.934 | 99.92 | 4.100 | 104.14 | 3.720 | 94.49 | 3.400 | 86.36 | 3.700 | 93.98 |
| 41 | 4.806 | 122.07 | 4.970 | 126.24 | 4.534 | 115.16 | 4.700 | 119.38 | 4.320 | 109.73 | 4.000 | 101.60 | 4.300 | 109.22 |
| 47 | 5.620 | 142.75 | 5.570 | 141.48 | 5.352 | 135.94 | 5.300 | 134.62 | 5.030 | 127.76 | 4.600 | 116.84 | 4.900 | 124.46 |