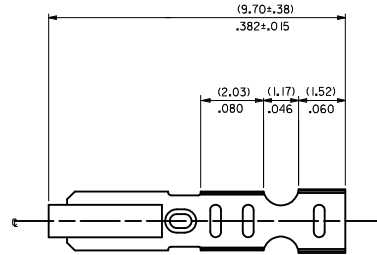
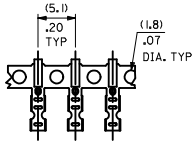
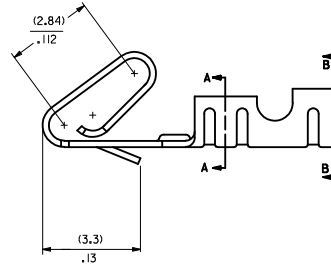
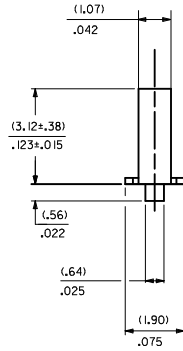
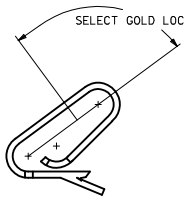


CARRIER VIEW

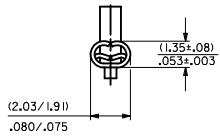


- NOTES:
- MATERIAL:
(0.201/008 THICK BRASS)
 - FINISH:
122 - OVERALL TIN: (0.00381)/.000150 MIN. TIN OVER (0.00076)/.000030 MIN NICKEL
154 - OVERALL TIN: (0.00254)/.000100 MIN. TIN OVER (0.00127)/.000050 MIN NICKEL
P909 - OVERALL HOT TIN DIP: (0.00254)/.000100 MIN.
550 - SELECT GOLD: (0.000381)/.000015 MIN. OVERALL GOLD FLASH: (0.00005)/.000002 MIN. OVERALL NICKEL UNDERPLATE: (0.00076)/.000030 MIN.
555- SELECT GOLD (0.000381)/.000015 MIN. OVERALL NICKEL UNDERPLATE: (0.00076)/.000030
558 - SELECT GOLD: (0.00076)/.000030 MIN. OVERALL GOLD FLASH: (0.00005)/.000002 MIN. OVERALL NICKEL UNDERPLATE: (0.00127)/.000050 MIN.
 - PRODUCT SPEC: PS-10-07
 - PACKAGING SPECIFICATION: LOOSE TERMINALS: PER FK-2759-001 CHAIN FORM TERMINALS: NONE
 - CRIMP IS FOR 22-30 GA WIRE WITH (1.57)/.062 DIA INSULATION MAX.
 - INSERTION FORCE OF TERMINAL INTO (2.54)/.100 CENTERLINE CONNECTOR IS 2.5 LBS. MAX
 - TERMINAL RETENTION IN HOUSING IS 26.7N / 6LBS MIN. WHEN PULLED AT THE RATE OF (25.4MM) / 1 INCH PER MINUTE.
 - DIMENSIONS GIVEN ACROSS CENTERLINES ARE SYMMETRICAL ABOUT THOSE CENTERLINES WITHIN HALF THE TOTAL TOLERANCE.
 - THIS PART CONFORMS TO CLASS B REQUIREMENTS OF COSMETIC SPECIFICATION PS-45499-002.

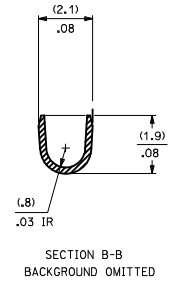
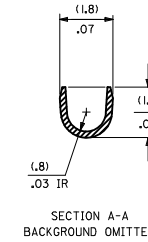
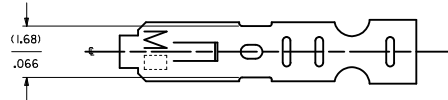
SELECT GOLD LOCATION



CRIMP DETAIL



CRIMPED TERMINAL 2759-(P909)C IS USED WITHOUT WIRE AND IS INSERTED INTO HOUSING TO PROVIDE TENSION WHEN ASSEMBLED TO HEADERS DURING SHIPMENT.



- 2759-(***))
- FORM
 - L=LOOSE
 - C=LOOSE CRIMPED
 - A=CHAIN PER ES-339-A
 - B=CHAIN PER ES-339-B
- PLATING
- SEE NOTE 2

REVISE NOTE 7 IEC NO. UCF2011-2220 DRAWN BY: DRANK/PPER 2012/03/26 CHECKED BY: CHYD/BANDERSON 2012/03/26 APPROVED BY: APPR:FSM/TH 2012/04/05	QUALITY SYMBOLS	GENERAL TOLERANCES (UNLESS SPECIFIED)	DIMENSION STYLE	SCALE	DESIGN UNITS	THIRD ANGLE PROJECTION	
	∇=0 ∇=0 ∇=0	mm INCH 4 PLACES ±.010 3 PLACES ±.025 ±.014 2 PLACES ±0.36 1 PLACE ±.014 0 PLACE ±.014	MM/IN	DRAWN BY: SAMIEC DATE: 07/28/187	DATE: 07/28/187	INCH	CRIMP TERMINAL 22-30 GA WIRE
	ANGULAR ±1/2° DRAFT WHERE APPLICABLE MUST REMAIN WITHIN DIMENSIONS	MATERIAL NO. SEE CHART SIZE D	APPROVED BY: FSMITH DATE: 2012/03/20	DOCUMENT NO. SD-2759	SHEET NO. 1 OF 2	moxle logo	moxle logo

20 19 18 17 16 15 14 13 12 11 10 9 8 7 6 5 4 3 2 1

2759-(***)*

PART NO.	ENG. NO.
08-55-0101	2759-(555)B
08-55-0102	2759-(555)L
08-55-0126	2759-(555)A
08-56-0109	2759-(550)B
08-56-0110	2759-(550)L
08-50-0113	2759-(P909)B
08-50-0114	2759-(P909)L
08-50-0124	2759-(P909)C
08-51-0108	2759-(122)B
	2759-(122)L
08-50-0274	2759-(P909)B
08-50-0273	2759-(P909)A
08-55-0130	2759-(558)B
08-55-0131	2759-(558)L
08-50-0160	2759-(154)L
08-50-0159	2759-(154)B

<p>REMOVE 08500275</p> <p>DEC NO: UCP2011-2220 DRAWN BY: PPFR 2012/03/26 CHECKED BY: GYD/BANDERSON 2012/03/26 APPROVED BY: FSM/TH 2012/04/05</p> <p>AV</p>	<p>QUALITY SYMBOLS</p> <p>▽=0 ▽=0 ▽=0</p>	<p>GENERAL TOLERANCES (UNLESS SPECIFIED)</p> <table border="1"> <thead> <tr> <th></th> <th>mm</th> <th>INCH</th> </tr> </thead> <tbody> <tr> <td>4 PLACES ±</td> <td>---</td> <td>---</td> </tr> <tr> <td>3 PLACES ±</td> <td>---</td> <td>±.010</td> </tr> <tr> <td>2 PLACES ±</td> <td>0.25</td> <td>±.014</td> </tr> <tr> <td>1 PLACE ±</td> <td>0.36</td> <td>---</td> </tr> <tr> <td>0 PLACE ±</td> <td>---</td> <td>---</td> </tr> </tbody> </table> <p>ANGULAR ±1/2°</p> <p>DRAFT WHERE APPLICABLE MUST REMAIN WITHIN DIMENSIONS</p>		mm	INCH	4 PLACES ±	---	---	3 PLACES ±	---	±.010	2 PLACES ±	0.25	±.014	1 PLACE ±	0.36	---	0 PLACE ±	---	---	<p>DIMENSION STYLE</p> <p>MM/IN</p> <p>DRAWN BY: DATE SAMIEC 07/28/87</p> <p>CHECKED BY: DATE PATEL 07/28/87</p> <p>APPROVED BY: DATE FSM/TH 2012/03/20</p> <p>MATERIAL NO. SEE CHART</p> <p>SIZE D</p>	<p>SCALE</p> <p>1:1</p>	<p>DESIGN UNITS</p> <p>INCH</p>	<p>THIRD ANGLE PROJECTION</p>	<p>TITLE</p> <p>CRIMP TERMINAL 22-30 GA WIRE</p>	<p>molex</p> <p>DOCUMENT NO. SD-2759</p>	<p>SHEET NO.</p> <p>2 OF 2</p>
				mm	INCH																						
			4 PLACES ±	---	---																						
			3 PLACES ±	---	±.010																						
			2 PLACES ±	0.25	±.014																						
1 PLACE ±	0.36	---																									
0 PLACE ±	---	---																									
<p>THIS DRAWING CONTAINS INFORMATION THAT IS PROPRIETARY TO MOLEX INCORPORATED AND SHOULD NOT BE USED WITHOUT WRITTEN PERMISSION</p>																											

19 18 17 16 15 14 13 12 11 10 9 8 7 6 5 4 3 2 1