



# MEA-LG-AM

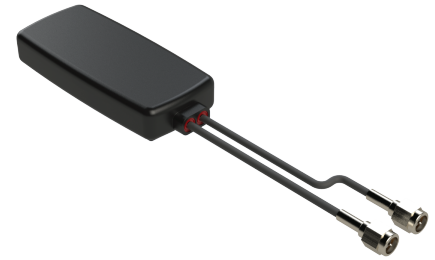
CELLULAR/LTE and GPS/GLONASS Adhesive Mount

Part #: 100-00193-01

## Description

Maxtena's MEA-LG-AM GPS/GLONASS & LTE Cellular solution is a high performance antenna in one compact and secure housing. It covers GPS/GLONASS (1575-1606 MHz) and LTE (698-960/ 1710-2170/ 2500-2700 MHz). The antenna provides exceptional pattern control, polarization purity and high efficiency. The MEA-LG-AM is an adhesive mount antenna with rugged ABC plastic housing and is ideal for the most demanding environmental challenges. It is ideal for glass mount applications.

The standard MEA-LG-AM comes with 3 meters LMR100 cable and SMA-Male connectors. Cable and connectors are customizable upon request. The MEA-LG-AM provides outstanding performance for any telematics, remote monitoring, and fleet management application.



Cable 1 - CELLULAR / LTE Antenna	
Frequency Range	698-960 MHz
Band	700/850/900 MHz
Return Loss	-13.3 dB
VSWR	1.8:1
Efficiency	53%
Peak Gain	2.4 dBi
Average Gain	-2.7 dB
Frequency Range	1710-2170 MHz
Band	1700/1800/1900/2100 MHz
Return Loss	-18.3 dB
VSWR	1.3:1
Efficiency	49%
Peak Gain	1.3 dBi
Average Gain	-3.0 dB
Frequency Range	2500-2700 MHz
Band	2600 MHz
Return Loss	-9.8 dB
VSWR	2.0:1
Efficiency	25%
Peak Gain	0.4 dBi
Average Gain	-5.9 dB
Impedance	50 Ω
Polarization	Linear
Radiation Pattern	Omni-Directional
Max. Input Power	25 W

## Features

- Cable 1: CELLULAR/LTE - 698-960 MHz - 1710-2170 MHz - 2500-2700 MHz
- Cable 2: GPS/GLONASS/QZSS/Galileo - 1575-1606 MHz
- Adhesive Mount
- Ground Plane Independent
- Customizable Cable and Connector Dimensions
- Low profile: 83 x 35 x 13.3 mm
- IP67
- IP69

## Applications

- Fleet management
- Telematics
- Monitoring
- IOT
- Asset tracking
- Security and Surveillance
- Vending Machines

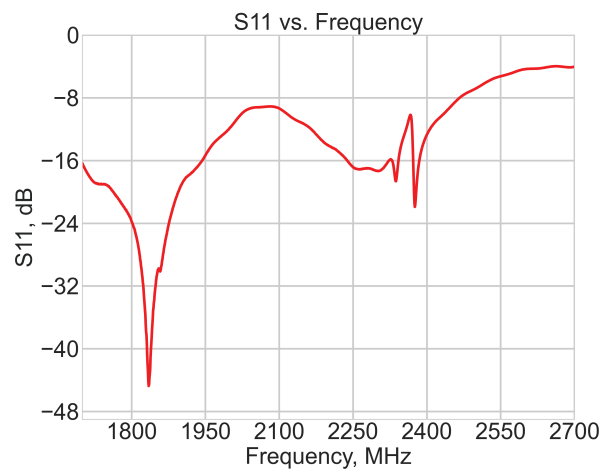
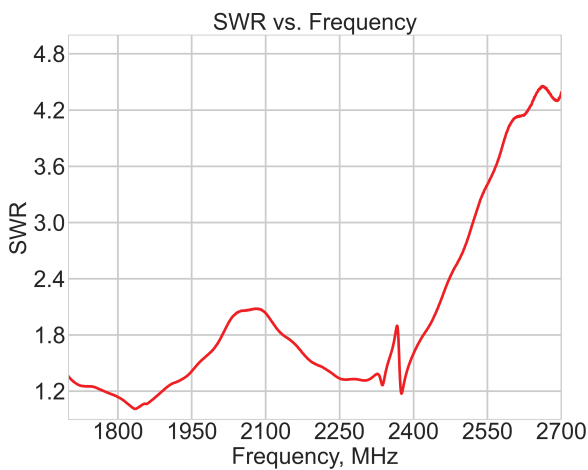
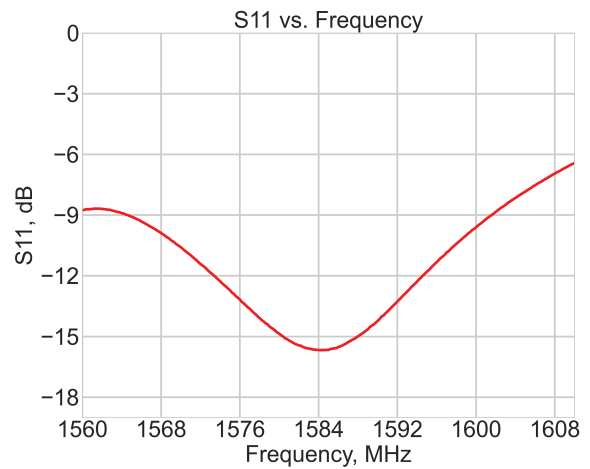
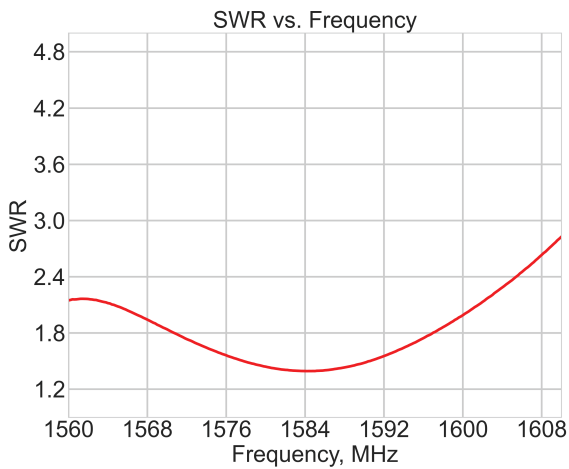
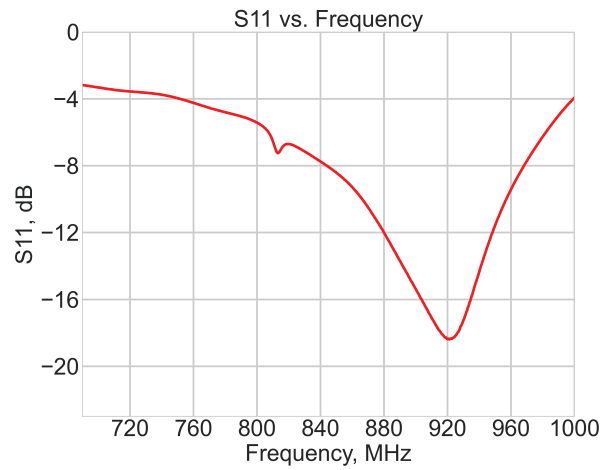
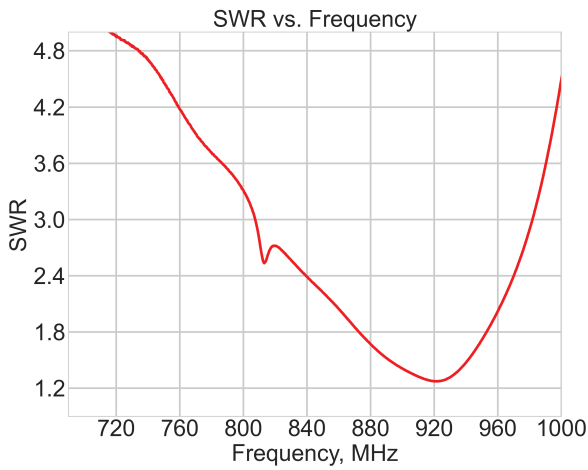
**Table 2 - GPS/GLONASS/QZSS/Galileo Antenna**

Frequency Range	1575.42 MHz	1598-1606 MHz
Band	1575 MHz	1602 MHz
Return Loss	≤ -15 dB	
VSWR	≤ 1.4:1 dB	
Impedance	50 Ω	
Radiation Pattern	Hemispherical	
Patch Size	25 x 25 x 4 mm	
Polarization	RHCP	
Saw Filter	pre-filter	
Active Gain	28 dB @ 2.7 V	
Noise Figure	1.5 dB Typ	
Voltage	1.5 – 3.6 V	
Current	9 mA Typ	
Power Consumption	24.3 mW Typ	
ESD Protection	2kV	

**Mechanical Specifications**

Antenna Dimensions	83 x 35 x 13.3 mm
Operating Temperature	-40 °C to +85 °C
Ingress Protection	IP67, IP69
Connector	SMA male
Mounting Type	Adhesive Mount
Radome Type	ABS UV Stable
Radome Color	Black
Substance Compliance	RoHS

\*Antenna Measurement Conditions:  
Mounted on ABS plate of 30x30x0.25cm



NOTES:

1. FREQUENCY:

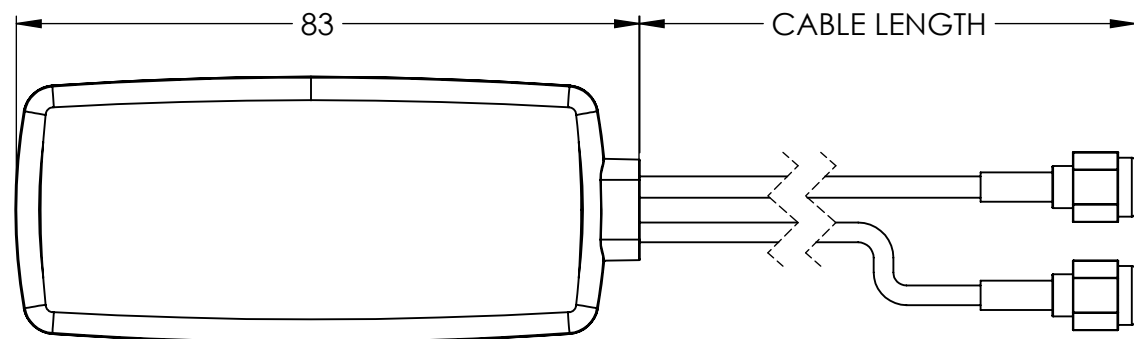
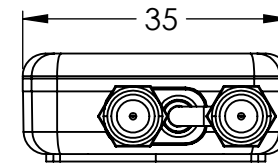
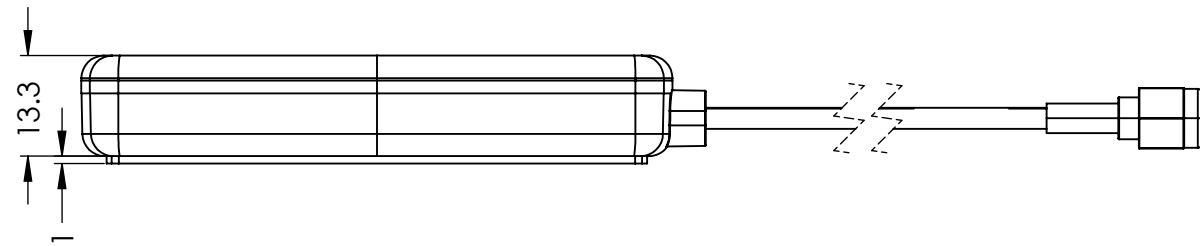
- CABLE 1 (2G, 3G, 4G) 698-960 MHz, 1710-2170 MHz, 2500-2700 MHz
- CABLE 2 (GPS, QZSS, GALILEO, GLONASS) , 1575.42 MHz, 1598-1606 MHz

2. CUSTOMIZABLE CABLE AND CONNECTOR TYPE

3. MECHANICAL:

- MOUNTING TYPE: ADHESIVE MOUNT
- RADOME MATERIAL: ABS UV STABLE
- OPERATING TEMPERTATURE: -40 C ~ +85 C
- STORAGE TEMPERTATURE: -40 C ~ +85 C
- CERTIFICATES: IP67, IP69

DRAWING REVISION HISTORY			
REV	DESCRIPTION	DATE	BY
A	INITIAL RELEASE	2021-07-26	JET



ITEM 100-00193 REVISION HISTORY			
REV	DESCRIPTION	DATE	BY
A	INITIAL RELEASE	2021-07-26	JET

100-00193 CONFIGURATION TABLE				
DASH NO	CABLE TYPE	CABLE LENGHT	CONNECTOR TYPE	RADOME COLOR
-01	CABLE 1: LMR100 CABLE 2: LMR100	300 CM 300 CM	SMA-MALE SMA-MALE	BLACK

UNLESS OTHERWISE SPECIFIED:

DIMENSIONS ARE IN MM  
TOLERANCES:  
FRACTIONAL ±  
ANGULAR: MACH ± .5° BEND ±  
ONE PLACE DECIMAL ± 1.0  
TWO PLACE DECIMAL ± .50

INTERPRET GEOMETRIC TOLERANCING PER:

THIRD ANGLE PROJECTION  
DO NOT SCALE DRAWING

	NAME	DATE
DRAWN	JET	2021-07-26
CHECKED	ZX	2021-07-26
ENG APPR.	NPC	2021-07-26
MFG APPR.		
Q.A.		

CAD MAINTAINED.  
CHANGES SHALL BE INCORPORATED BY THE DESIGN ACTIVITY.

MAXTENA, INC

TITLE: 100-00193  
MEA-LG-AM

SIZE B DWG. NO. 117-00489-01 REV A

CAGE CODE: 5KQH7 SCALE: NONE SHEET 1 OF 1