

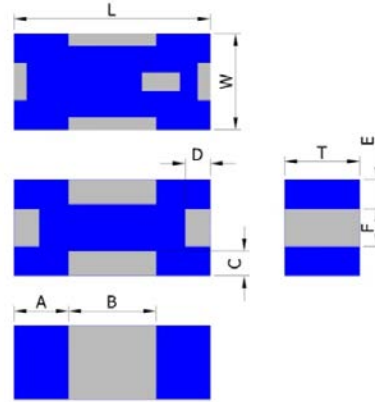
PRODUCT FEATURES

1. Surface mount band pass filter with a small size of 1.6 X 0.8 X 0.7 mm, RoHS compliant.
2. Provide low insertion loss and high rejection rate.
3. Highly stable under temperature and humidity changes.

RF CHARACTERISTICS

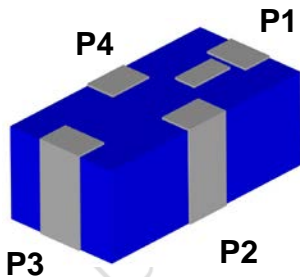
P/N BP5900B0603AT	Specification
Frequency range	4900- 5840 MHz
Insertion Loss (max)	1.5 dB max. at 25 °C 1.7 dB max. - 40°C to + 85 °C
VSWR	2.0 max
Impedance	50 Ω
Attenuation (min.)	33 dB @ 100-2170 MHz 29 dB @ 2170-2500 MHz 32 dB @ 9800 -12000 MHz
Operating temperature range	-40°C to +85°C

PHYSICAL DIMENSIONS



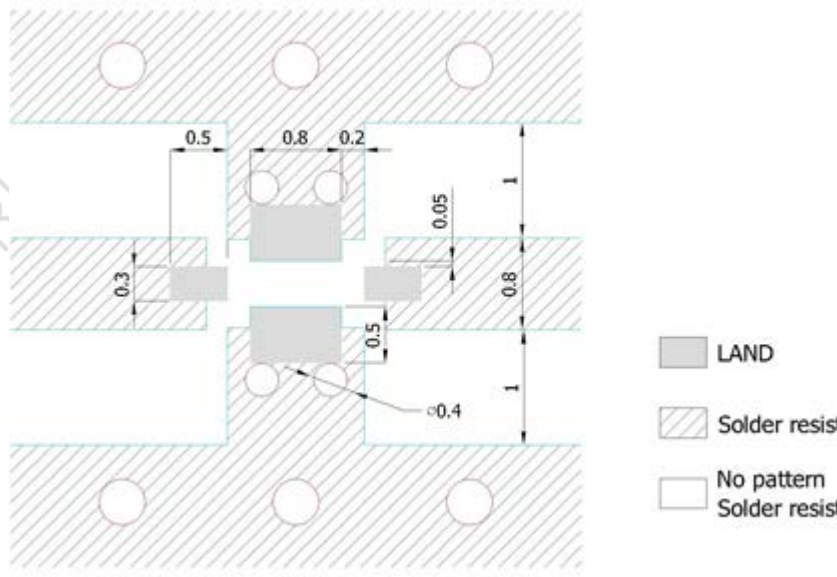
Symbol	Dimension (mm)
L	1.60 ± 0.15
W	0.80 ± 0.15
T	0.70 ± 0.10
A	0.45 ± 0.15
B	0.70 ± 0.15
C, D	0.20 ± 0.15
E	0.25 ± 0.15
F	0.30 ± 0.15

TERMINAL CONFIGURATION



PIN	Connection
1	INPUT
2	GND
3	OUTPUT
4	GND

PCB DESIGN/LAYOUT CONSIDERATION



Note:

- Unit in mm
- Design trace width to be 50Ω impedance.

Typical RF Performance

