

KEY FEATURES

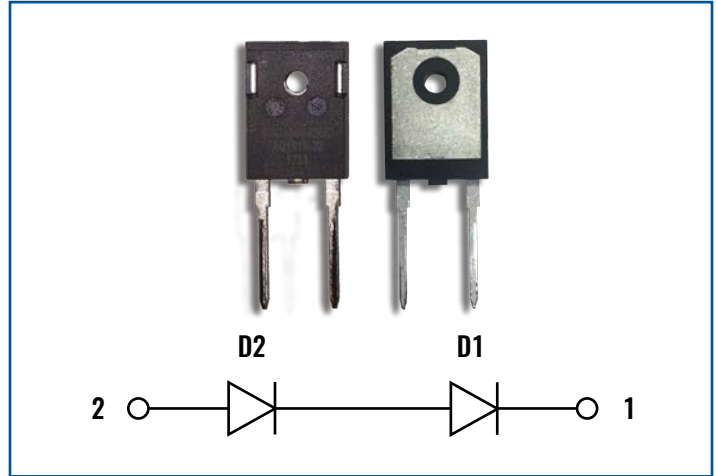
- VRRM 650V
- IF @ 125°C 50A
- BACKSIDE ISOLATION
- SMALL FOOTPRINT
- ZERO REVERSE RECOVERY
- PLASTIC COTS PACKAGING

BENEFITS

- COMPACT, LIGHTWEIGHT DESIGN
- INCREASED POWER DENSITY

APPLICATIONS

- AEROSPACE
- HIGH EFFICIENCY CONVERTERS & MOTOR DRIVES
- POWER SUPPLIES



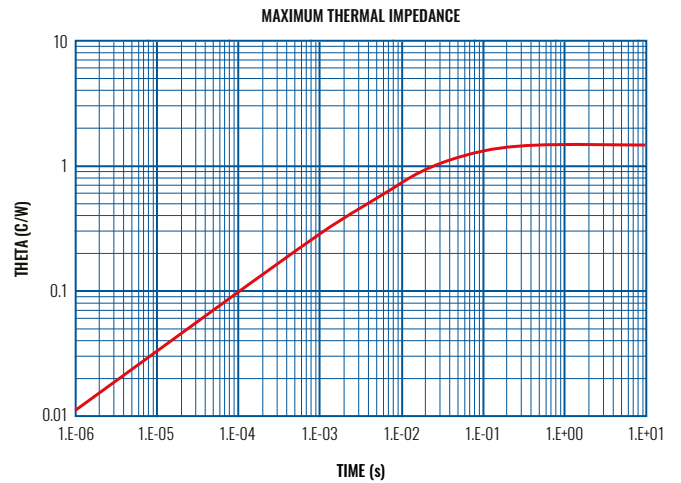
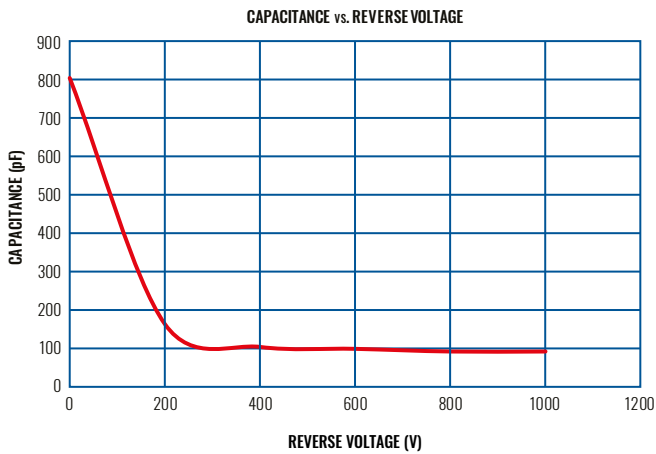
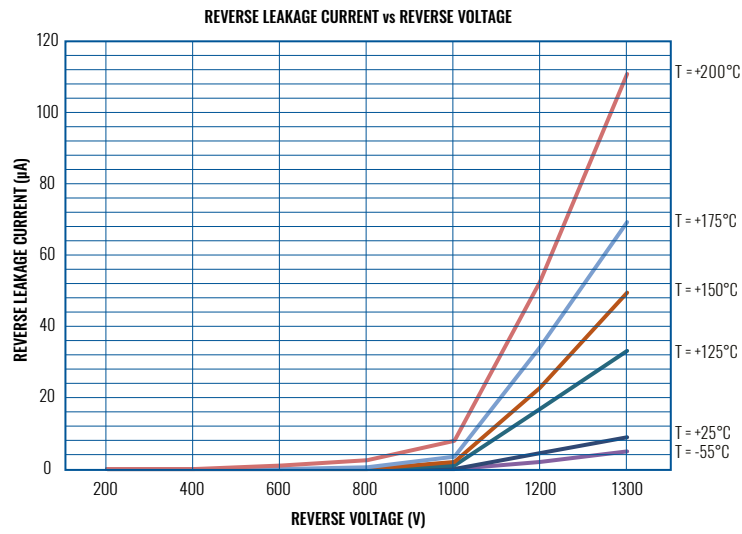
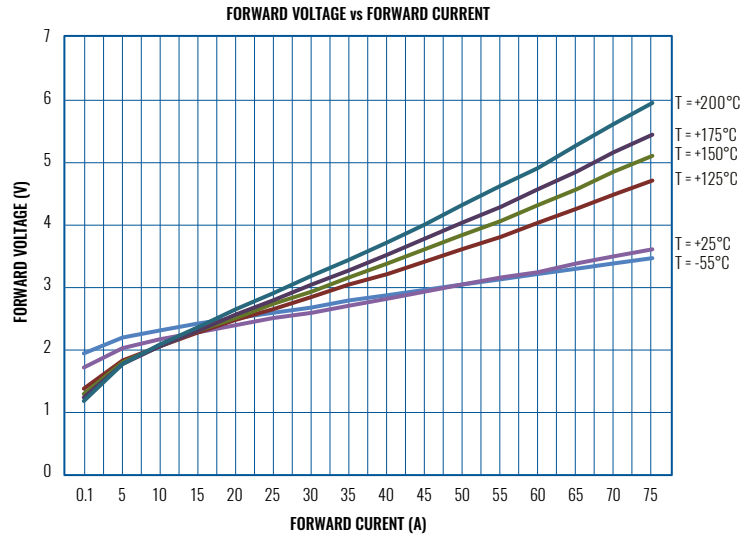
ORDERING GUIDE

Part Number SDD50065SHD
Description Dual 650V Silicon Carbide Diode

ABSOLUTE MAXIMUM RATINGS

PARAMETER	SYMBOL	VALUE	TEST CONDITIONS
Max D.C. Reverse Voltage	V_R	1300V	
Repetitive Peak Voltage	V_{RRM}	1300V	
Surge Peak Reverse Voltage	V_{RSM}	1300V	
DC Blocking Voltage	V_{DC}	1300V	
Isolation Voltage	V_{ISO}	1500V	
DC Forward Current	$I_{F(avg)}$	50A 50A	TC = 25°C TC = 125°C
Repetitive Peak Forward Current	I_{FRM}	46A 30A	$T_C=25^\circ\text{C}$, $t_p=10\text{ms}$, Half Sine Pulse $T_C=125^\circ\text{C}$, $t_p=10\text{ms}$, Half Sine Pulse
Non-Repetative Forward Surge Current	I_{FSM}	90A 70A	$T_C=25^\circ\text{C}$, $t_p=10\text{ms}$, Half Sine Pulse $T_C=125^\circ\text{C}$, $t_p=10\text{ms}$, Half Sine Pulse
Power Dissipation	P_D	150W 180W	TC = 25°C TC = 125°C
Maximum Case Temperature	$T_{C(max)}$	+125°C	
Maximum Junction Temperature	$T_{J(max)}$	+175°C	
Operating Temperature Range	T	-55°C to +125°C	
Storage Temperature Range	T_{STG}	-55°C to +125°C	
Lead Temperature for 10 Seconds	T_L	220°C	

TYPICAL PERFORMANCE CURVES



ELECTRICAL SPECIFICATIONS

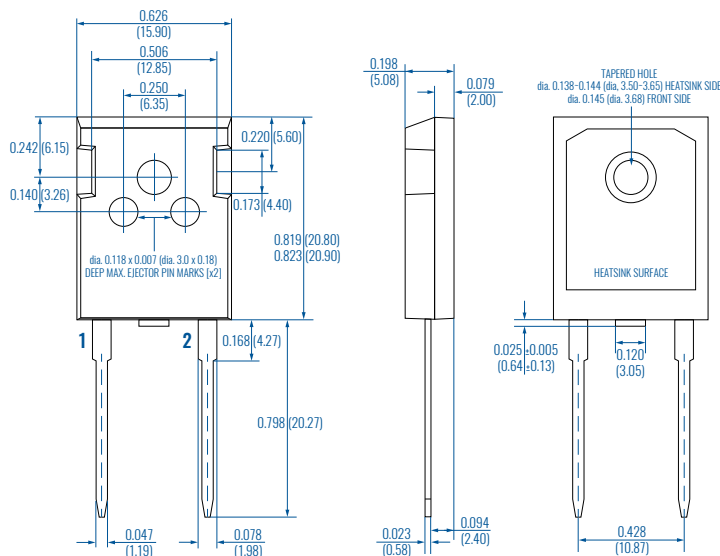
Typical @ 25°C unless otherwise noted

Parameter	Symbol	Min.	Typ.	Max.	Unit
DC Blocking Voltage	V_{DC}		1300		V
Forward Voltage	V_F		3.0 3.6		V V
Reverse Current	I_{RM}		10 34	500 1000	μA μA
Total Capacitive Charge	Q_C		84	150	nC
Total Capacitance	C		806 162 100 95 88 88		pF
Switching Time	T_{RR}		60		nS

THERMAL AND MECHANICAL CHARACTERISTICS

Parameter	Symbol	Min.	Typ.	Max.	Unit
Thermal Resistance, Junction to Case	$R_{\theta(JC)}$		0.92		°C/W
Weight	W	6.3		6.8	g
Mounting Torque	M_S	1.2		1.76	N-m

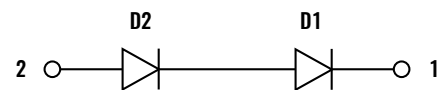
PACKAGE OUTLINE



PIN DESCRIPTION

Pin	Description
1	Cathode
2	Anode

SCHEMATIC



© 2017 Solitron Devices, Inc.

This document is believed to be correct at the time of publication and Solitron Devices accepts no responsibility for consequences from printing errors or inaccuracies. All specifications are subject to change without notice.