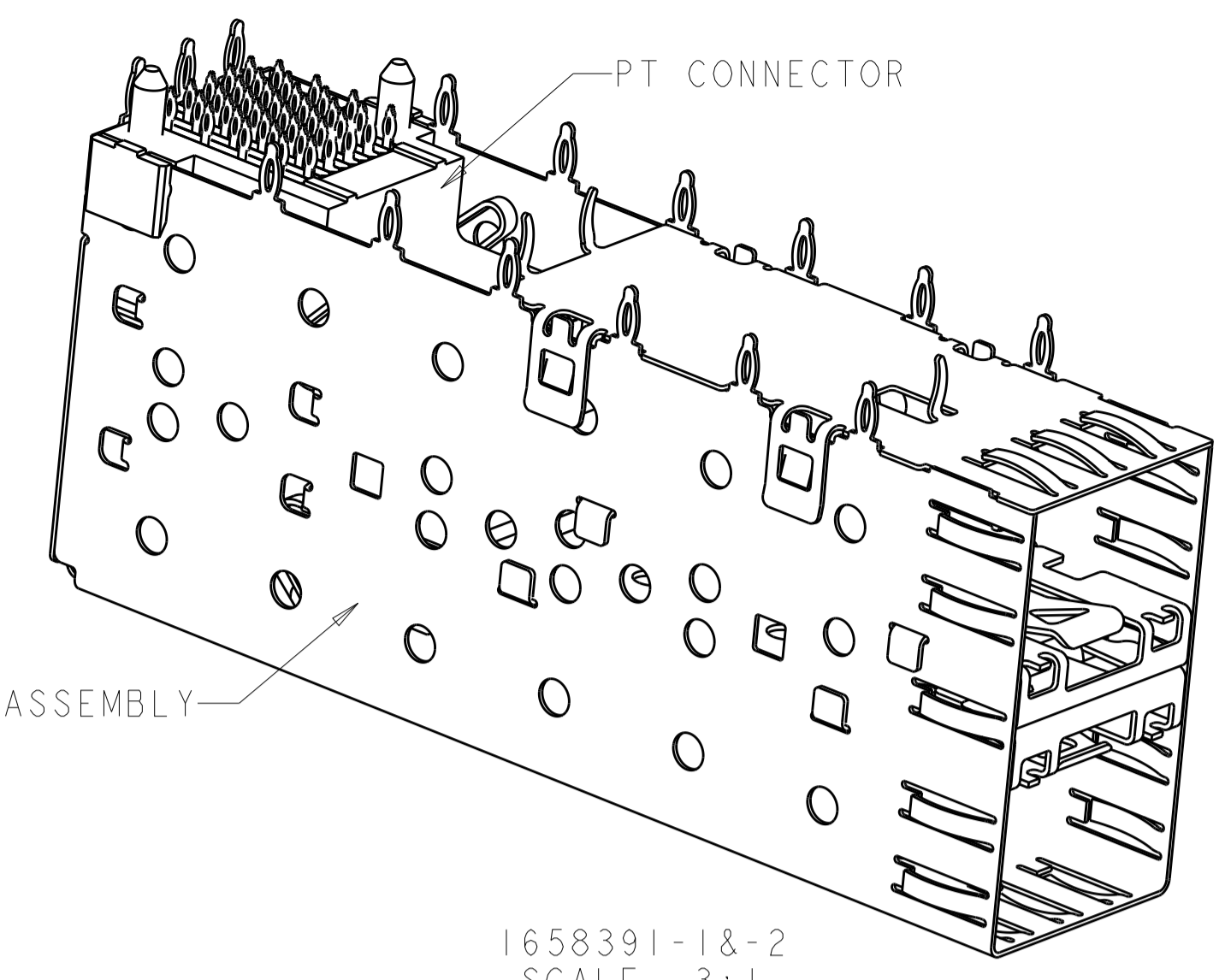
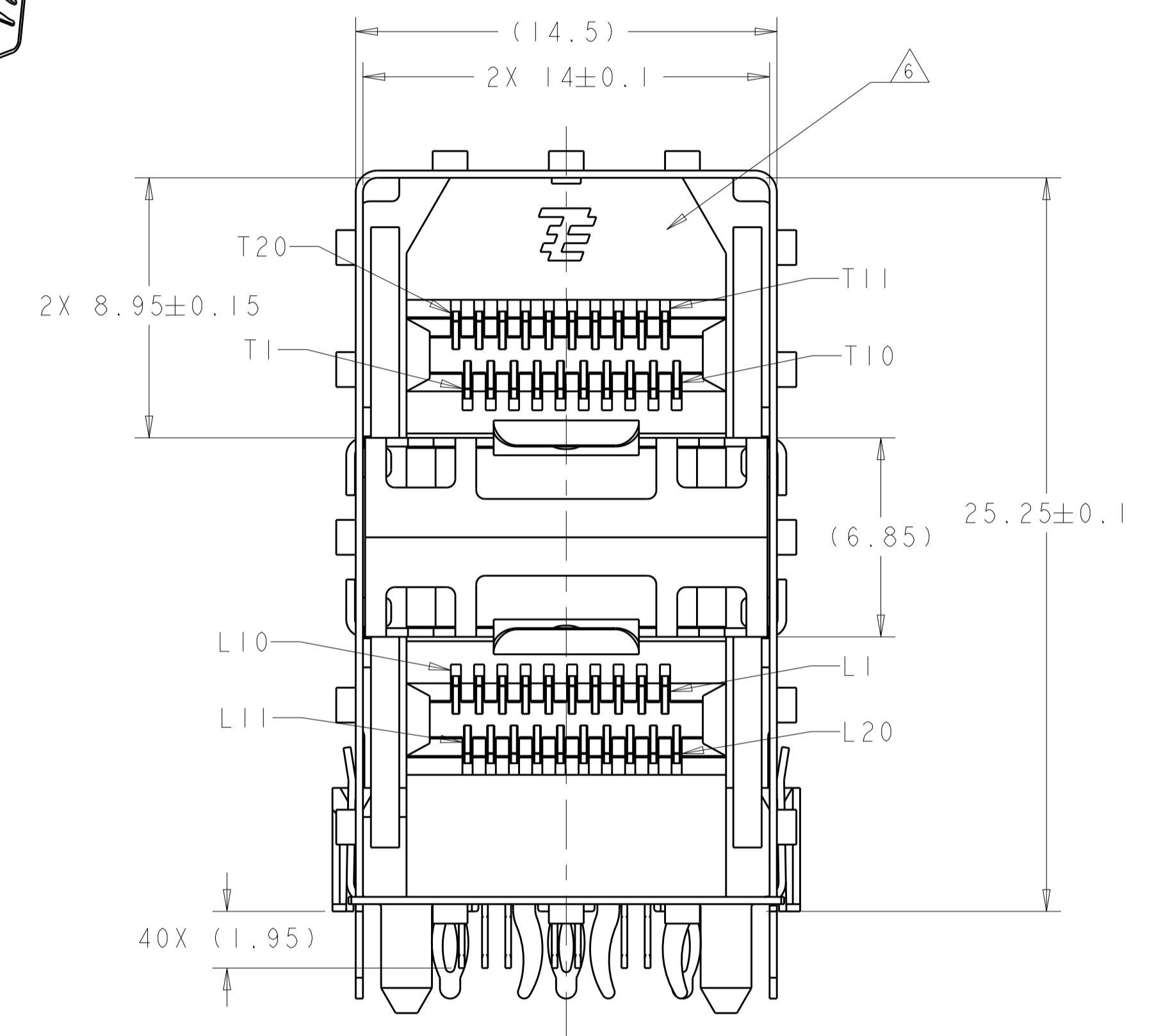
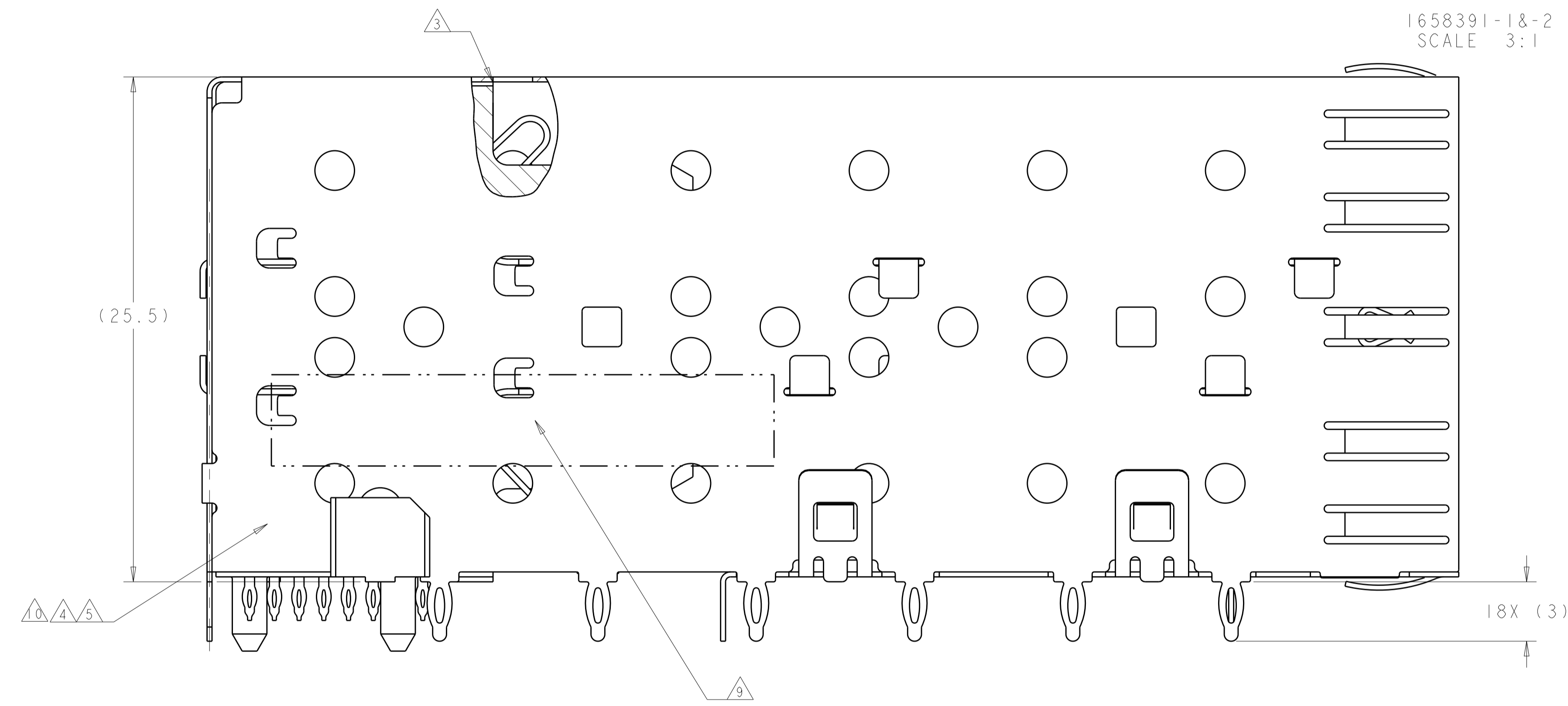


LOC		DIST		REVISIONS			
ES	00	P	LTN	DESCRIPTION	DATE	DWN	APVD
		F1		REVISED PER ECO-11-005033	18MAR2011	RK	HMR
		G		REVISED PER ECO-14-000886	20FEB2014	JW	SH
		G1		REVISED PER ECO-14-010419	11JUL2014	JW	SH
		H		REVISED PER ECO-15-013594	22SEP2015	JW	SH

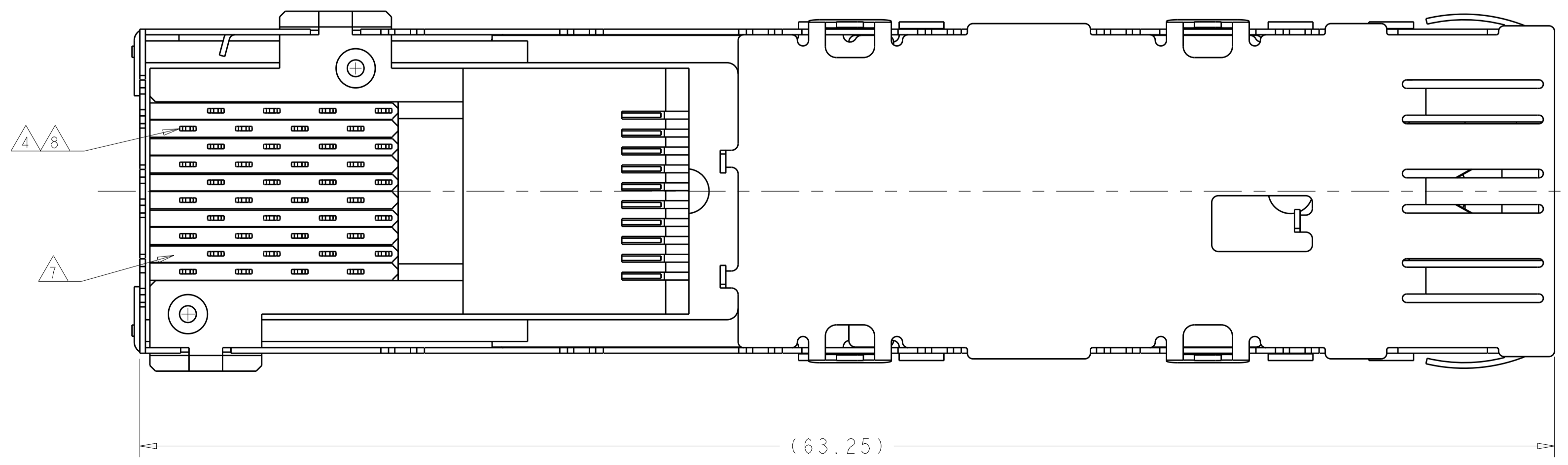


2X1 CAGE ASSEMBLY

1658391-1&2  
SCALE 3:1



- △1 DATUM AND BASIC DIMENSION TO BE DETERMINED BY CUSTOMER.
- △2 INTERPRETATION OF DATUM REFERENCE FRAME IN ACCORDANCE WITH SECT 4.4.1.1 OF ASME Y14.5M-1994.
- △3 TOP OF PT CONNECTOR TO BE 0-0.15 FROM INSIDE SURFACE OF CAGE.
- △4 COPPER ALLOY.
- △5 1.25umMIN TIN PER ASTM B 545 OVER NICKEL FLASH PER QQ-N-290. NON-PLATED EDGES PERMISSIBLE.
- △6 LCP, HIGH TEMPERATURE, UL 94V-0 RATED, BLACK.
- △7 POLYESTER, UL 94V-0 RATED, BLACK.
- △8 CONTACT MATING AREA: SURFACE TREATMENT OVER 0.76um MIN GOLD PER ASTM B 488 OVER 1.27um MIN NICKEL PER QQ-N-290. NEEDLE EYE: 1.25um MIN TIN PER ASTM B 545 OVER 1.27um MIN NICKEL PER QQ-N-290. REMAINDER OF CONTACT: 0.76um MIN NICKEL PER QQ-N-290.
- △9 DATE CODE AND PART NUMBER IN APPROXIMATE AREA SHOWN.
- △10 MATERIAL: NICKEL SILVER ALLOY(NO PLATING)



**SUPERSEDED BY:**  
1658391-2

CONNECTOR FINISH	CONNECTOR MATERIAL	CAGE FINISH	CAGE MATERIAL	PART NUMBER
△8	△4, △7	△5	△4	1658391-2
				1658391-1

THIS DRAWING IS A CONTROLLED DOCUMENT.		DWN	25MAR03	NO		△10	1658391-2
DIMENSIONS:		CHK	M. COWHER	23JAN04	△4, △7		1658391-1
TOLERANCES UNLESS OTHERWISE SPECIFIED:		APVD	J. KOPPENHEFFER	23JAN04	△5		1658391-2
mm	0 PLC ±	NAME	M. WALMSLEY	23JAN04	△4		1658391-1
	2 PLC ±0.1	PRODUCT SPEC			△5		1658391-2
	3 PLC ±	APPLICATION SPEC			△4		1658391-1
	4 PLC ±	SIZE	108-2161		△5		1658391-2
	ANGLES ±	WEIGHT	114-13103		△4		1658391-1
MATERIAL	FINISH	Customer Drawing			△5		1658391-2

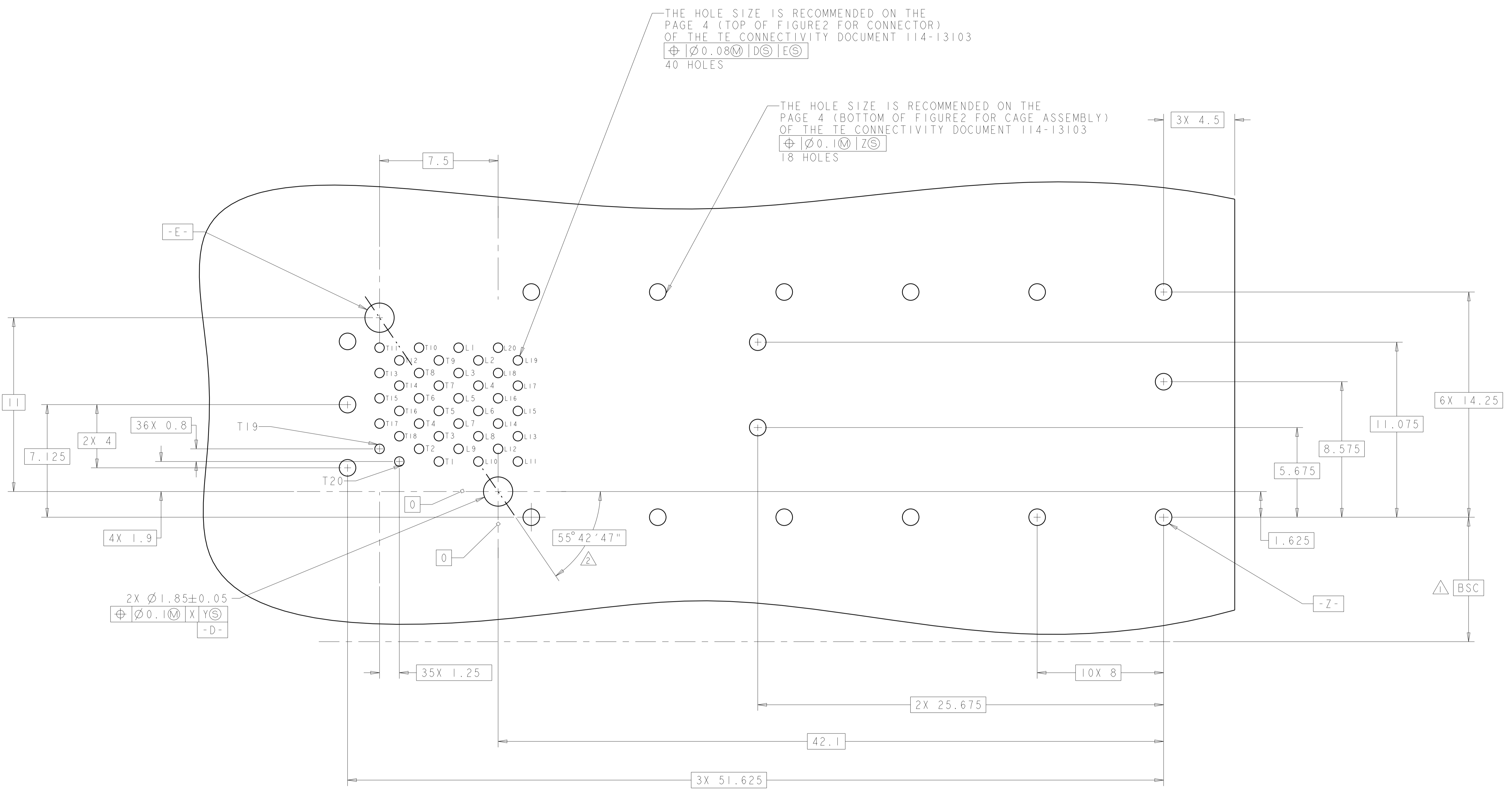
  

TE Connectivity		CAGE AND PT CONNECTOR ASSEMBLY, 2x1, PRESS FIT, STANDARD PROFILE, SFP	
SIZE	CAGE CODE	DRAWING NO	RESTRICTED TO
A	100779	C=1658391	
SCALE 1:1		SHEET 1 OF 3	REV H

LOC		DIST		REVISIONS				
P	LTN	DESCRIPTION	DATE	DMN	APVD			
-	-	SEE SHEET 1	-	-	-			

THE HOLE SIZE IS RECOMMENDED ON THE PAGE 4 (TOP OF FIGURE2 FOR CONNECTOR) OF THE TE CONNECTIVITY DOCUMENT 114-13103  
 $\oplus \text{ } \varnothing 0.08 \text{ } \text{M} \text{ } \text{D} \text{ } \text{S} \text{ } \text{E} \text{ } \text{S}$   
 40 HOLES

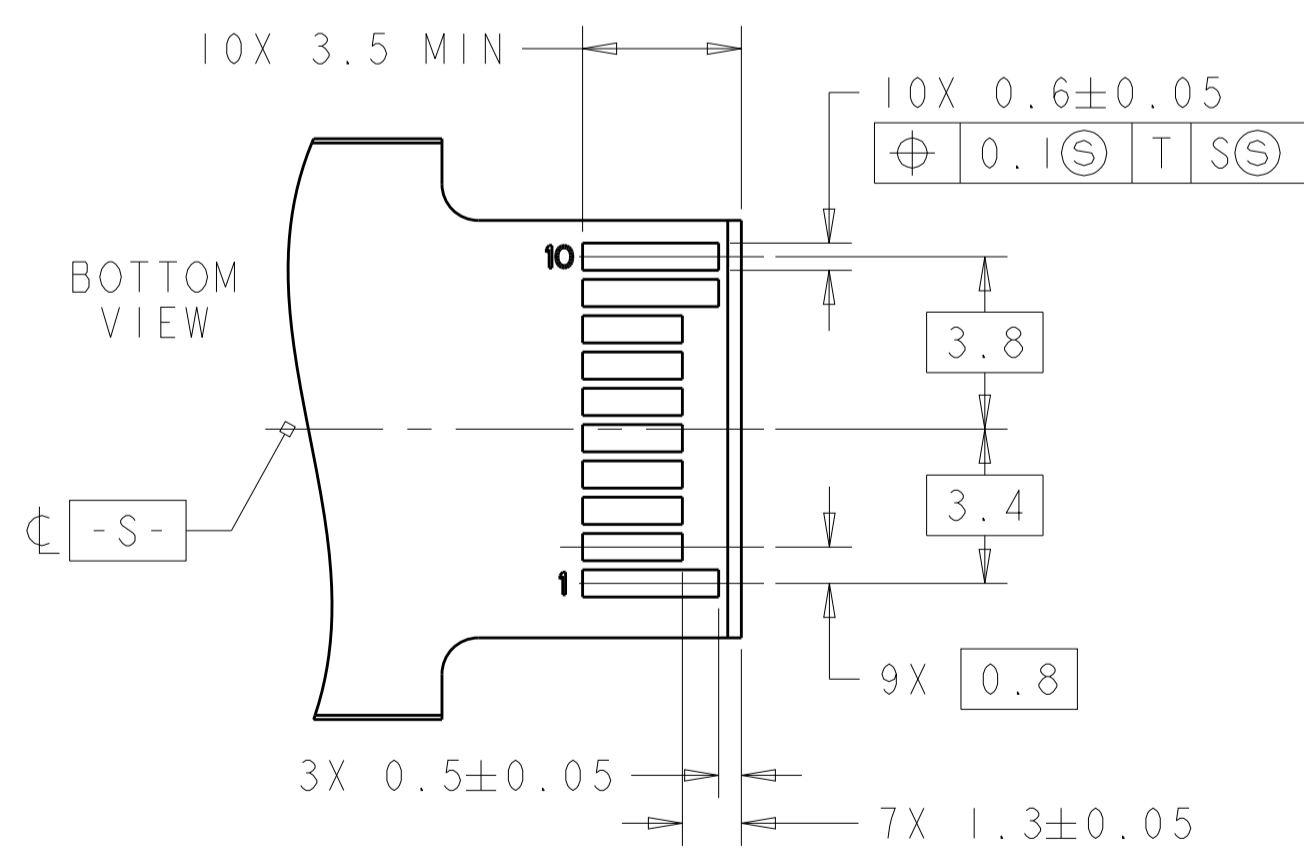
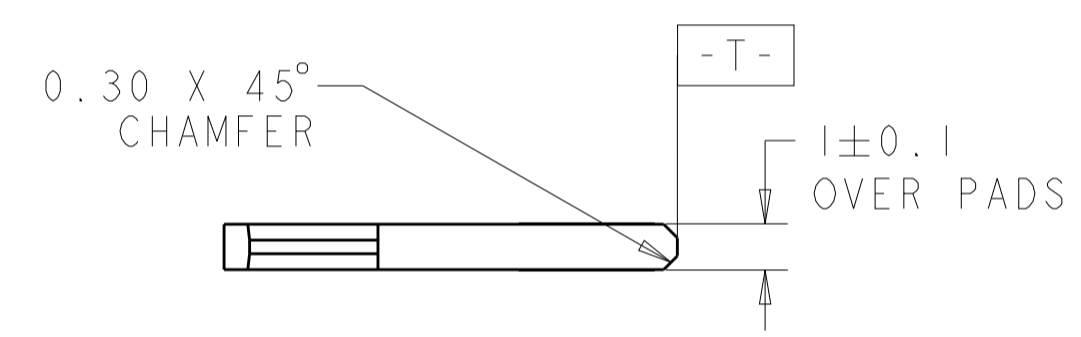
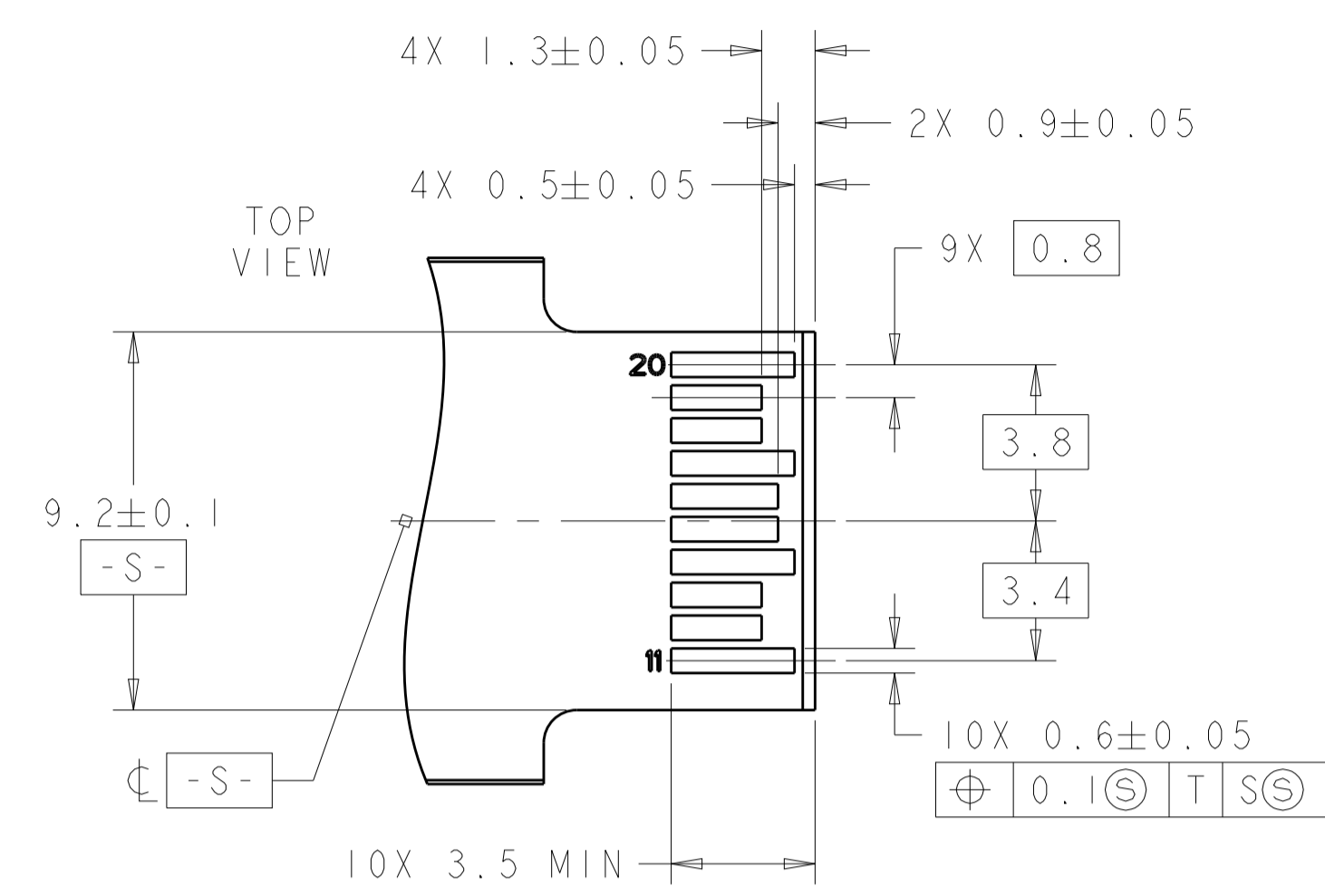
THE HOLE SIZE IS RECOMMENDED ON THE PAGE 4 (BOTTOM OF FIGURE2 FOR CAGE ASSEMBLY) OF THE TE CONNECTIVITY DOCUMENT 114-13103  
 $\oplus \text{ } \varnothing 0.1 \text{ } \text{M} \text{ } \text{Z} \text{ } \text{S}$   
 18 HOLES




SFP HOST BOARD  
 MECHANICAL LAYOUT  
 SCALE 8:1

THIS DRAWING IS A CONTROLLED DOCUMENT.		DMN: M. COWHER 25MAR03	TE Connectivity
DIMENSIONS: mm		CHK: J. KOPPENHEFFER 23JAN04	
TOLERANCES UNLESS OTHERWISE SPECIFIED:		APVD: M. WALMSLEY 23JAN04	NAME: CAGE AND PT CONNECTOR ASSEMBLY, 2x1, PRESS FIT, STANDARD PROFILE, SFP PRODUCT SPEC: 108-2161 APPLICATION SPEC: 114-13103 SIZE: CAGE CODE DRAWING NO: A100779 WEIGHT: C=1658391 Customer Drawing
0 PLC ±		RESTRICTED TO:	
1 PLC ±0.1		SCALE: 1:1	
2 PLC ±		SHEET 2 OF 3	
3 PLC ±		REV H	
4 PLC ±			
ANGLES ±			
FINISH			

LOC		DIST		REVISIONS			
ES	00	P	LTN	DESCRIPTION	DATE	DWN	APVD
		-		SEE SHEET 1	-	-	-



RECOMMENDED LAYOUT FOR  
 MATING TRANSCEIVER PCB  
 SCALE 6:1

THIS DRAWING IS A CONTROLLED DOCUMENT.		DWN	M. COWHER	25MAR03	 TE Connectivity
DIMENSIONS:		CHK	J. KOPPENHEFFER	23JAN04	
mm	TOLERANCES UNLESS OTHERWISE SPECIFIED:	APVD	M. WALMSLEY	23JAN04	NAME
0 PLC ±	1 PLC ±	PRODUCT SPEC	CAGE AND PT CONNECTOR ASSEMBLY,		RESTRICTED TO
2 PLC ±0.1	3 PLC ±	APPLICATION SPEC	2x1, PRESS FIT, STANDARD PROFILE,		
4 PLC ±	ANGLES ±	SIZE	CAGE CODE	DRAWING NO	REV
MATERIAL	FINISH	WEIGHT	A100779C=1658391		H
Customer Drawing		SCALE	8:1	SHEET	3 OF 3