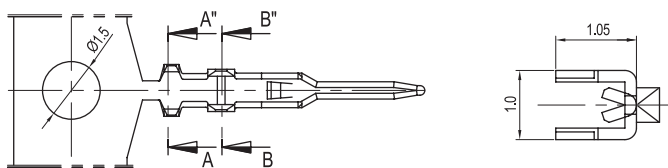
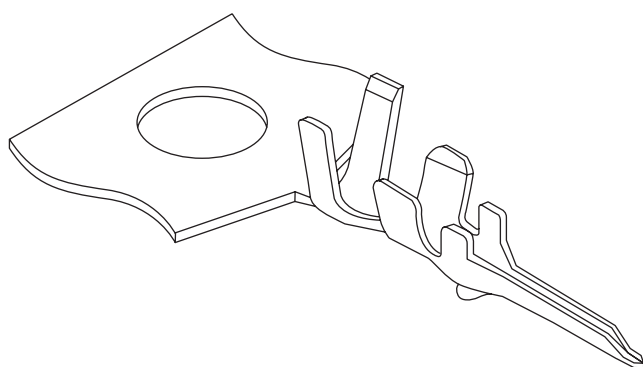


# 1.25mm (0.049") PITCH CONNECTOR

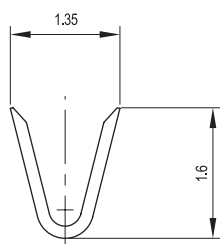
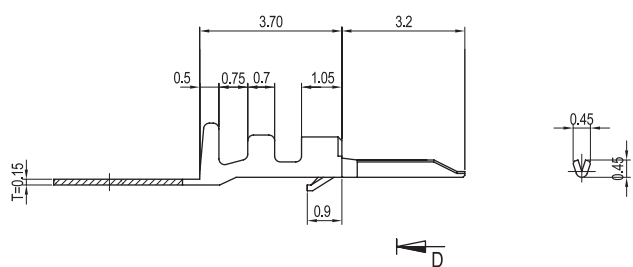
**Board-in Connector  
Crimp Terminal**

**12521TS**

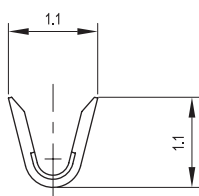
**DIP**



**SECTION D-D''**



**SECTION A-A''**



**SECTION B-B''**

## Material

| I/NO | DESCRIPTION | TITLE   | AWG     | MATERIAL        | FINISH     |
|------|-------------|---------|---------|-----------------|------------|
| 1    | TERMINAL    | 12521TS | #28-#32 | Phosphor Bronze | Tin Plated |

## Specification

| ITEM                   | SPEC  |
|------------------------|---|
| Voltage Rating         | AC/DC 125V  |
| Current Rating         | AC/DC 1A  |
| Operating Temperature  | -25 °C ~ +85 °C   |
| Contact Resistance     | -   |
| Withstanding Voltage   | AC250V/1min   |
| Insulation Resistance  | 100MΩ MIN   |
| Applicable Wire        | AWG #28~#32   |
| Applicable P.C.B       | 1.2~1.6mm   |
| Applicable FPC/FFC     | -   |
| Solder Height          | -   |
| Crimp Tensile Strength | AWG #28 : 1.0kgfMIN<br>AWG #30 : 0.8kgfMIN<br>AWG #32 : 0.5kgfMIN |
| UL FILE NO             | -   |