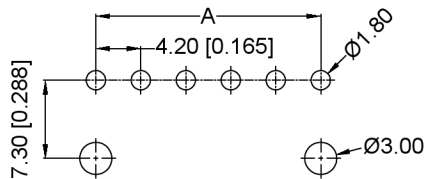
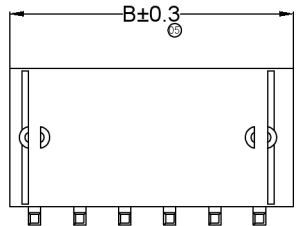
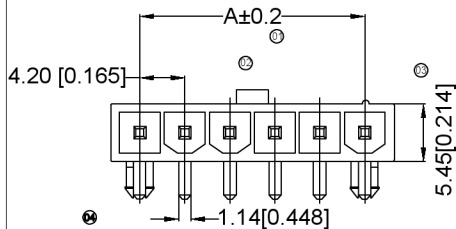
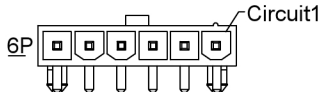
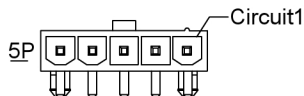
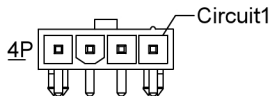
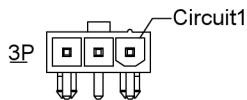
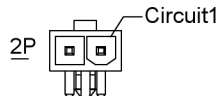
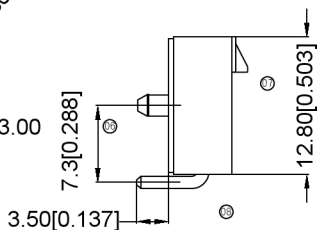


XKB



Recommended PCB Layout
General Tolerance: ±0.05



Specifications:

规格: **XKB**
 Voltage rating: 600V AC/DC
 额定电压: 600V AC/DC
 Current rating: 9A AC/DC
 额定电流: 9A AC/DC
 Withstanding voltage: 1500V AC/minute
 耐受电压: 1500V AC/分钟
 Temperature range: -25°C +85°C
 温度范围: -25°C +85°C
 Insulation resistance: ≥1000MΩ
 绝缘电阻: ≥1000MΩ
 Contact resistance: ≤10mΩ
 接触电阻: ≤10mΩ
 After environmental testing: ≤20mΩ
 环境测试后: ≤20mΩ

X9357WR X-XX S-XXSNXX
 ○○○○○○ ○○○○○○

- 01 Series No.
- 02 Category: W-wafer
- 03 Welding Board Angle: R-Right Angle 90°
- 04 Welding Way: Blank-DIP;
- 05 Row No.-Pin No.: XX-Single row
- 06 Special NO.: S-W/With positioning column
- 07 Material: N0-PA66 94V-0;
N2-PA66 94V-2
- 08 Planting Category: SN-Brigh tin plating
- 09 Color: E Blank-natural color ;BK-Black

Poles	Dimensions(mm)	
	A	B
02	4.20	9.60
03	8.40	13.80
04	12.60	18.00
05	16.80	22.20
06	21.00	26.40

X9357WR-XXS-N2SNBK	Nylon 66 UL94V-2 (Black)	Brass	Tin-Plated	X9357H
X9357WR-XXS-N0SN	Nylon 66 UL 94V-0			
X9357WR-XXS-N2SN	Nylon 66 UL 94V-2			
PART NO	Material	Material(Pin)	Finish(Pin)	Suitable XKB Terminal

广东星坤科技股份有限公司

生 日期

文件工程章

REVISIONS

www.helxkb.com

NO.	DATE	REVISIONS	APPROVED	UNSPECIFIED TOLERANCES
XKB		ANGLR ±5°		
		L ≤ 4 ±0.2		
		4 < L ≤ 16 ±0.3		
		16 < L ≤ 63 ±0.4		
		L > 63 ±0.5		

DSND	DATE	SCALE: N/A	MODEL TYPE: X9357WR-XXS-XXSNXX
DWNN	DATE	VIEW: ①	PART NO.:
CHKD	DATE	UNIT: mm/in	2.40mm Crimp Style Connectors
APPD	DATE	SIZE: A4	DWG NO.:
XKB INDUSTRIAL PRECISION CO., LIMITED			WEIGHT 1.0g
			SHEET 1/1
			REVISION A0