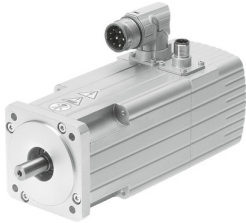


Servo motor EMMS-AS-70-MK-HV-RMB-S1

Part number: 1704828

FESTO



Data sheet

Feature	Value
Number of pole pairs	4
Type code	EMMS-AS
Rotor position sensor	Absolute encoder, multi-turn
Rotor position sensor interface	EnDat® 22
Rotor position sensor measuring principle	Inductive
Temperature monitoring	PTC resistor
Max. rotational speed	5560 1/min
Nominal rotary speed	5000 1/min
Brake DC operating voltage	24 V
Insulation protection class	F
Brake power consumption	11 W
Motor constants	1.189 Nm/A
Nominal operating voltage DC	565 V
Motor nominal power	1146 W
DC nominal voltage	565 V
Motor nominal current	1.84 A
Rotor position sensor resolution	19 bit
Phase-phase winding resistance	13.007 Ohm
Winding inductance phase-phase	24.523 mH
Type of winding switch	Star inside
Peak current	8.3 A
Voltage constant, phase-to-phase	71.83 mVmin
Rating class according to EN 60034-1	S1
CE marking (see declaration of conformity)	As per EU EMC directive As per EU low voltage directive
Corrosion resistance class (CRC)	2 - Moderate corrosion stress
Storage temperature	-20 °C ... 60 °C
Relative air humidity	0 - 90 %
Degree of protection	IP65
Ambient temperature	-10 °C ... 40 °C
Certification	RCM compliance mark c UL us - Recognized (OL)
Total output inertia moment	0.68 kgcm ²
Brake holding torque	2 Nm
Brake mass moment of inertia	0.07 kgcm ²
Nominal torque	2.19 Nm

Feature	Value
Peak torque	8.55 Nm
Stall torque	2.52 Nm
Permissible axial shaft load	75 N
Permissible radial shaft load	200 N
MTTF, subcomponent	76 years, rotor position sensor 1769 years, holding brake
MTTFd, subcomponent	152 years, rotor position sensor
Switching cycles, holding brake	10 million idle actuations (without friction work!)
Product weight	2900 g
Electrical connection technology	Plug
Note on materials	RoHS-compliant
Conforms to standard	IEC 60034
Featherkey shaft design	DIN 6885 A 4 x 4 x 16