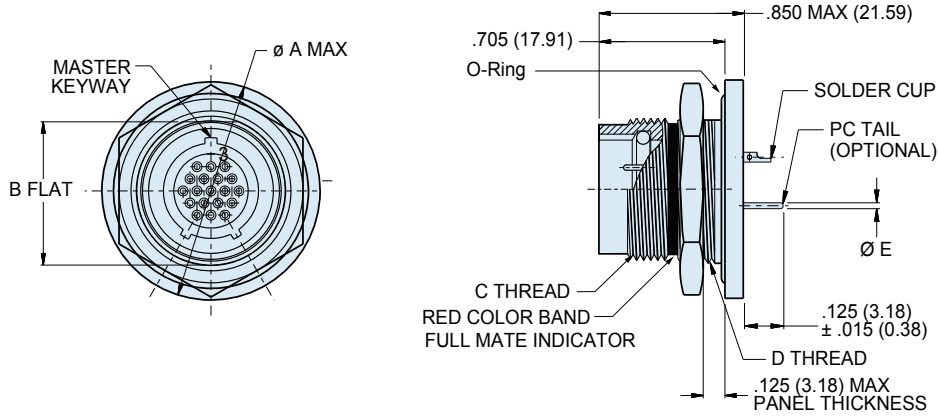




Series 802 AquaMouse™ Submersible Hermetic Receptacle

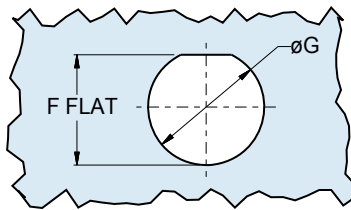
802-013-07 Dimensions

Rear panel mount jam nut receptacle - shell style 07



SHELL STYLE 07
REAR MOUNT JAM NUT

Dimensions													
Shell Size	A Max.		B Flat		C Threads	D Threads	Ø E Tail Dia.	F Flat		Ø G			
	In.	mm.	In. ± .003	mm. ± 0.08				In. ± .003	mm. ± 0.08	In.	mm.	In.	mm.
5	.885	22.48	.466	11.84	.438-28 UNEF	.500-32 UN-2A	#23 .018/.022 (0.46/0.56)	.479/.474	12.2/12.0	.510	12.95		
6	1.010	25.65	.591	15.01	.562-20 UN	.625-20 UN-2A		.604/.599	15.3/15.2	.635	16.13		
7	1.072	27.23	.653	16.59	.625-20 UN	.687-28 UN-2A	#20 .024/.028 (0.61/0.71)	.666/.661	16.9/16.8	.697	17.70		
8	1.135	28.83	.729/.725	18.52/18.42	.687-20 UN	.750-28 UN-2A		.737/.733	18.7/18.6	.760	19.30		
9	1.195	30.35	.778	19.76	.750-20 UNEF	.812-28 UN-2A	#16 .060/.064 (1.52/1.63)	.791/.786	20.1/20.0	.822	20.88		
10	1.260	32.00	.827	21.01	.812-20 UNEF	.875-28 UN-2A		.840/.835	21.3/21.2	.885	22.48		
12	1.322	33.58	.890	22.61	.875-20 UNEF	.938-28 UN-2A	#12 .092/.096 (2.34/2.44)	.903/.898	22.9/22.8	.948	24.08		
14	1.510	38.25	1.077	27.36	1.062-20 UN	1.125-28 UN-2A		1.090/1.085	27.7/27.6	1.135	28.83		
15	1.572	39.93	1.140	28.96	1.125-20 UN	1.188-28 UN-2A	#12 .092/.096 (2.34/2.44)	1.153/1.148	29.3/29.2	1.198	30.43		
21	1.940	49.28	1.467/1.463	37.26/37.16	1.4375-20 UN	1.500-28 UN-2A		1.475/1.471	37.5/37.4	1.510	39.12		



RECOMMENDED PANEL CUTOUT
FOR STYLE 07 REAR MOUNT JAM NUT

Dimensions in Inches (millimeters) are subject to change without notice.