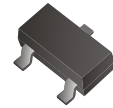


## CDSH3-21-G

Voltage: 200 Volts

Current: 200 mA

RoHS Device



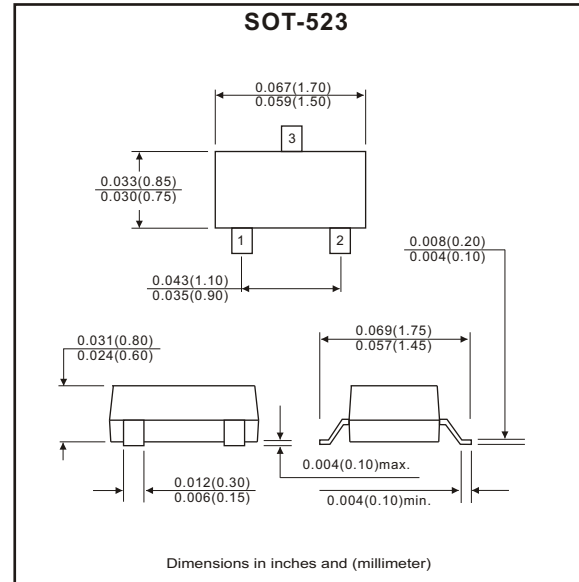
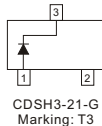
### Features

- Fast switching speed.
- For general purpose switching applications.
- High conductance.

### Mechanical data

- Case: SOT-523, molded plastic.
- Terminals: Solder plated, solderable per MIL-STD-202E, method 208C.
- Weight: 0.002 grams approx.

### Circuit Diagram



### Maximum Ratings (at TA=25°C unless otherwise noted)

Parameter	Symbol	Value	Unit
Peak repetitive peak reverse voltage	$V_{RRM}$	200	V
Working peak reverse voltage	$V_{RWM}$		
DC blocking voltage	$V_R$		
Forward continuous current	$I_{FM}$	400	mA
Averaged rectified output current	$I_o$	200	mA
Non-repetitive Peak forward surge current	$I_{FSM}$	2.5 0.5	A
		@TP=1.0μS @TP=1.0S	
Power dissipation	$P_D$	150	mW
Thermal resistance, junction to ambient air	$R_{\theta JA}$	833	°C/W
Operating junction temperature	$T_J$	150	°C
Storage temperature range	$T_{STG}$	-65 to +150	°C

### Electrical Ratings @TA=25°C unless otherwise noted.

Parameter	Symbol	Conditions	Min.	Typ.	Max.	Unit
Reverse breakdown voltage	$V_{BR}$	$I_R=100\mu A$	200			V
Forward voltage	$V_{F1}$	$I_F=100mA$			1	V
	$V_{F2}$	$I_F=200mA$			1.25	V
Reverse current	$I_R$	$V_R=200V$			100	nA
Capacitance between terminals	$C_T$	$V_R=0V, f=1MHz$			5	pF
Reverse recovery time	$T_{rr}$	$I_F=I_R=30mA, I_{RR}=0.1I_R, R_L=100\Omega$			50	nS

## Rating and Characteristic Curves (CDSH3-21-G)

Fig.1 Forward Characteristics

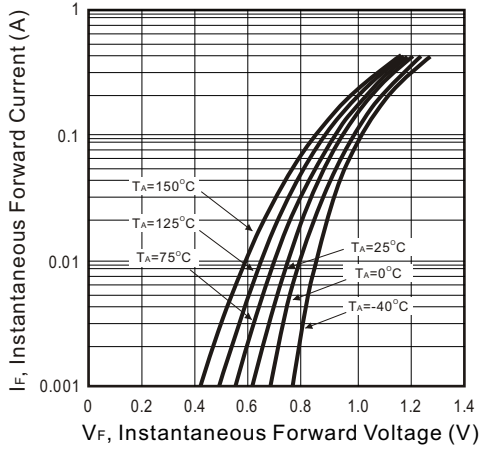


Fig.2 Reverse Characteristics

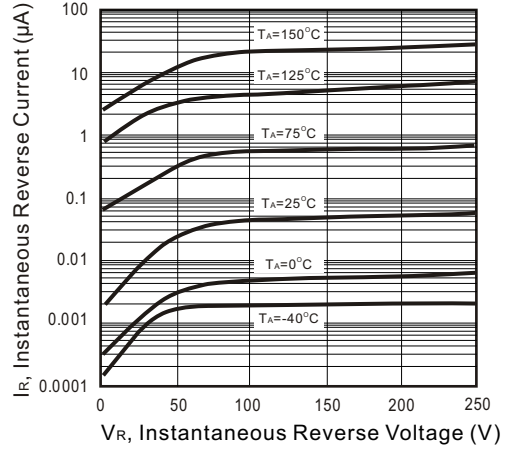


Fig.3 Capacitance Between Terminals Characteristics

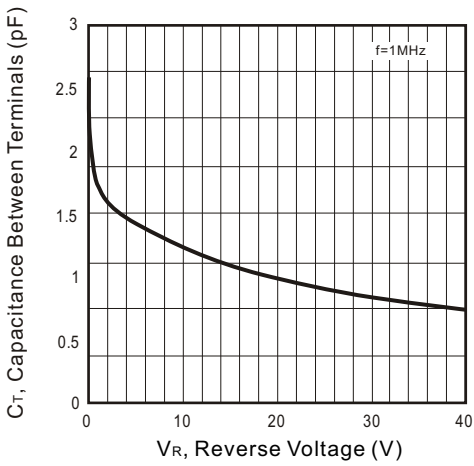


Fig.4 Power Derating Curve

