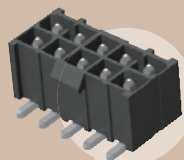


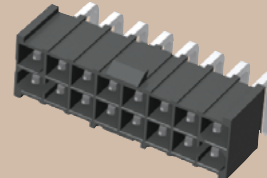


(4,19 mm) .165"

IPBT-105-H2-T-D-K



IPBT-108-H1-T-D-RA-K



IPBT-105-H1-T-D-GP

IPBT SERIES

ISOLATED TERMINAL POWER HEADER

SPECIFICATIONS

For complete specifications see www.samtec.com?IPBT

Insulator Material: Black Liquid Crystal Polymer

Contact Material: High Copper Alloy

Plating: Sn over 50µ" (1,27 µm) Ni

Operating Temp Range: -55°C to +105°C

Voltage Rating: 400 VAC/565 VDC

RoHS Compliant: Yes

Lead-Free Solderable: Yes

Yes

RECOGNITIONS

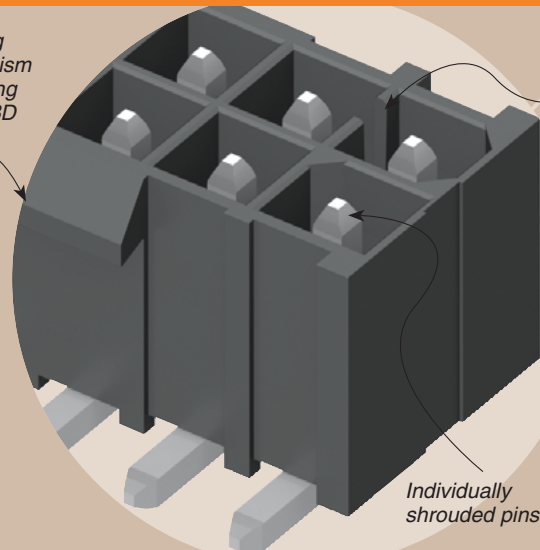
For complete scope of recognitions see www.samtec.com/quality



Mates with: IPBS, IPBD, PMSD, PMSS

IPBT/IPBS	
PINS POWERED	CURRENT RATING (PER CONTACT)
2	9.3 A
4	7.4 A
6	6.4 A
8	5.9 A
30	4.4 A

Latching mechanism for mating with IPBD Series

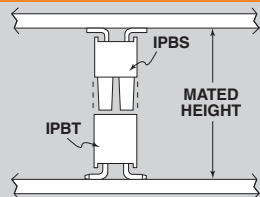


Keyed Polarization

RUGGEDIZED
by SAMTEC

- Individually shrouded contacts
- Polarized guide post hole option

APPLICATION



IPBT/IPBS LEAD STYLE	MATED HEIGHT*
H1-01	(15,25) .600
-H2-02	(16,84) .663

*Processing conditions will affect mated height.

ALSO AVAILABLE (MOQ Required)

- Other sizes
 - Other lead styles
- Contact Samtec.

Note: Some lengths, styles and options are non-standard, non-returnable.

IPBT	NO. OF POSITIONS PER ROW	LEAD STYLE	PLATING OPTION	ROW OPTION	OPTION
02, 03, 04, 05, 08, 10, 15 (-D only)	02, 03, 04, 05, 08, 10 (-S only) (Standard sizes)	-H1 = Through-Hole -H2 = Surface Mount	-T = Matte Tin	-S = Single Row -D = Double Row	-RA = Right Angle (Lead Style -H1 only) -GP = Guide Post Holes (8 positions not available) -K = Keyed Polarization (not available with -GP option, is required callout if -GP not called out)

Technical drawings showing various configurations and dimensions:

- H1-S: (10,29) .405
- H2-S: (11,40) .449
- H1-D: (9,65) .380
- H2-D: (11,43) .450
- H1-S-RA: (1,52) .060
- H1-D-RA: (5,51) .217

Dimensions for main body: (6,58) .259, (4,19) .165, (9,60) .378, (1,27) .050, (15,62) .615, (3,73) .147, (3,43) .135 DIA, (5,21) .205, (4,06) .160, (10,77) .424.

Dimensions for length: No. of Positions x (4,19) .165 + (1,33) .052, No. of Positions x (4,19) .165 + (12,27) .483, No. of Positions x (4,19) .165 + (6,10) .240.

Due to technical progress, all designs, specifications and components are subject to change without notice.

WWW.SAMTEC.COM