

FEATURES:

- AC Input 100~277Vac
- Built-in Active PFC Function
- Built-in : 24V/0.1A Max (For Lighting Sensor)
- Protection: SCP / OVP / OTP
- High Operating Ambient Temp.: 0°C~+50°C
- Surge protection: Line to Line 2KV
- Safety: Meet UL / PSE
- EMI: Meet FCC / CE
- Warranty: 7 years@T.C<75°C (refer to warranty policy)
- RoHS Compliant
- Dimming 0V-10V

PRODUCT SPECIFICATION						
MODEL	DC OUTPUT POWER(W)	DC OUTPUT VOLTAGE(V)	OUTPUT CURRENT(A)	OUTPUT CURRENT TOLERANCE	EFFICIENCY	O/P NOISE(P-P,V)
DBFN0040U152-00G	36	12-24	1.5	±7%	85.0%	1% Vo(max.)
DBFN0040U182-00G	43.2	12-24	1.8	±7%	85.0%	1% Vo(max.)
DBFN0040U142-00G	40.5	15-30	1.35	±7%	87.0%	1% Vo(max.)
DBFNA040U142-00G	42	15-30	1.4	±7%	87.0%	1% Vo(max.)
DBFN0040U102-00G	36	18-36	1	±10%	87.0%	1% Vo(max.)
DBFN0040U112-00G	37.8	18-36	1.05	±10%	87.0%	1% Vo(max.)
DBFN0040U901-00G	43.2	24-48	0.9	±10%	87.0%	1% Vo(max.)
DBFN0040U701-00G	39.2	28-56	0.7	±7%	87.0%	1% Vo(max.)

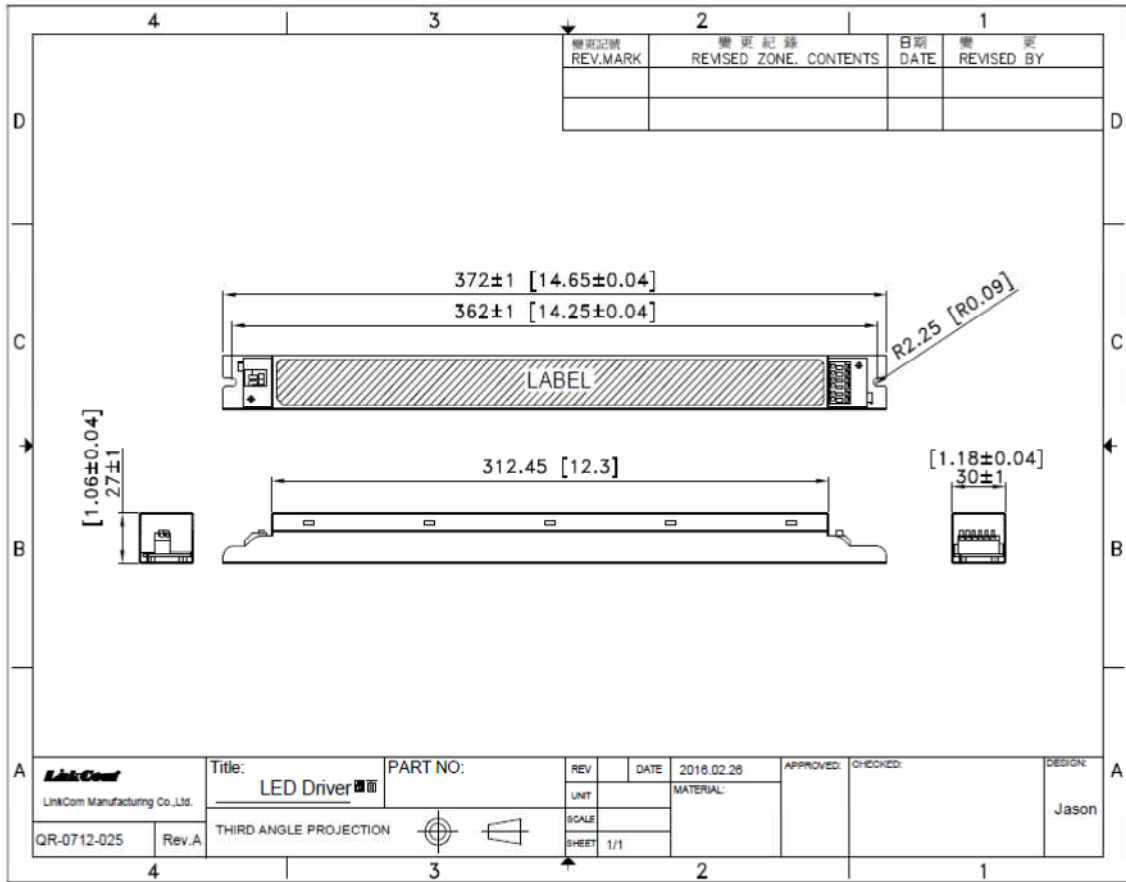
ELECTRICAL SPECIFICATION	
INPUT VOLTAGE RANGE	90-305Vac, 127-431Vdc, Normal: 100-277Vac
INPUT FREQUENCY	Range: 47-63Hz, Normal: 50-60Hz
ACTIVE POWER FACTOR	>0.9@Full Load 100-277Vac
THD	<15% at Full Load 277Vac
TURN ON DELAY TIME	<1S at Full Load 100-277Vac
AC CURRENT	0.7A / 100Vac 0.3A/277Vac
INRUSH CURRENT (typ)	Cold Start 65A@230Vac
LEAKAGE CURRENT	<0.75mA at 277Vac
SHORT CIRCUIT PROTECTION	SCP , OVP , OTP will restart automatically after the fault condition is removed
OVER VOLTAGE PROTECTION	
OVER TEMP. PROTECTION	
OPERATING TEMP.	0°C~+50°C @Full Load 120-277Vac
STORAGE TEMP.	-20°C~+80°C
RELATIVE HUMIDITY	10% to +90%, non-cond.
SAFETY	Meet UL 8750 / PSE
EMI	Meet FCC Part15 / Meet EN 55015
WITHSTAND VOLTAGE	I/P-O/P : 4242VDC, I/P-FG : 2121VDC
ISOLATION RESISTANCE	I/P-O/P, I/P-FG,O/P-FG :10M Ohms / 500VDC / 25°C / 70% RH
DIMENSION (L*W*H)	372 * 30 * 27 mm 【 14.6 * 1.18 * 1.06 inch 】

- (1) All parameters not specially mentioned are measured 230VAC input.
- (2) All specifications Typical @25°C, unless otherwise noted, at normal line and load.
- (3) Ripple and Noise measured directly at pins/terminals at nom. load, 0.1uF bypass and 47uF electrolytic, pk-pk @20MHz bandwidth.
- (4) Specified for free-air convection cooling.
- (5) Minimum load is NOT required for proper operation .
- (6) 100% Production Tested.

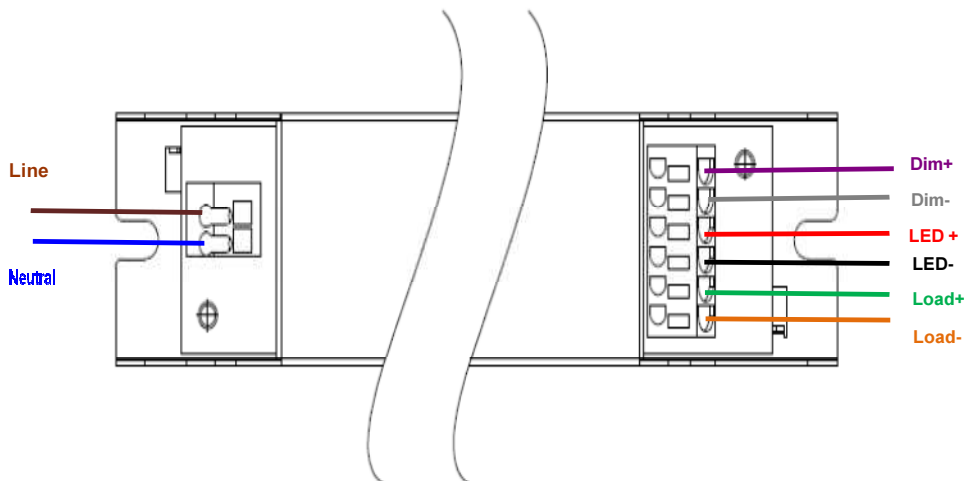
* REFERENCE: www.linkcom.com.tw

* Please contact sales@linkcom.com.tw, sales@linkcomusa.com for more information

DIMENSIONS



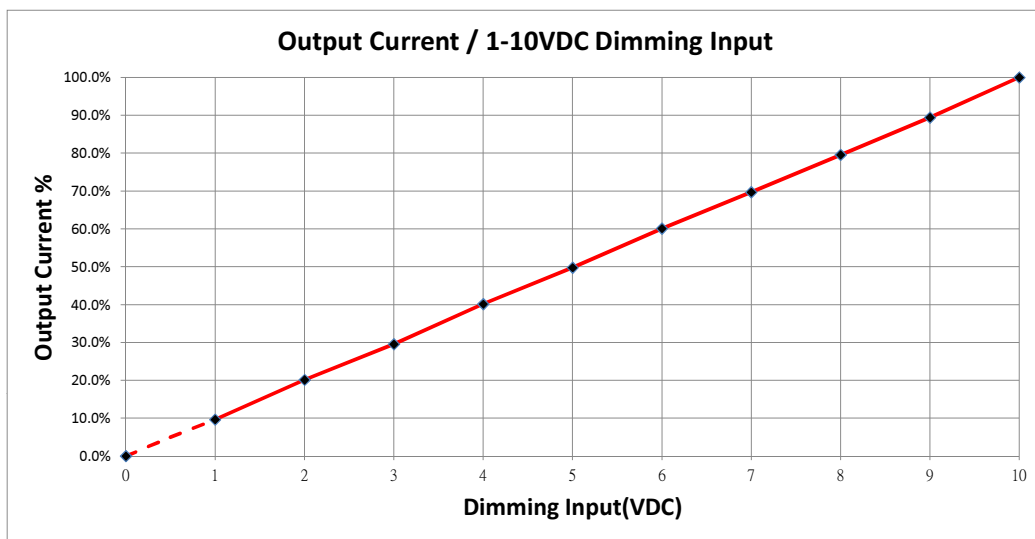
Wiring Diagram



* REFERENCE: www.linkcom.com.tw

DIMMING OPERATION

Parameters	Minimum	Typical	Maximum
Absolute maximum voltage on the 0-10V(+) Purple Wire	1V	—	10V
Source current on the 0-10V(+) Purple Wire	0mA	—	1mA



Notes:

1. Dim+ and Dim- wires on the output side are used for 1-10V dimming.
2. Recommended dimmers are Leviton IP710, Lutron NTSTV-DV or equivalent.
3. When dimming wires are open, the output current will be at 100%.