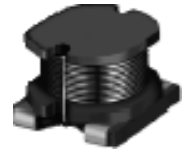
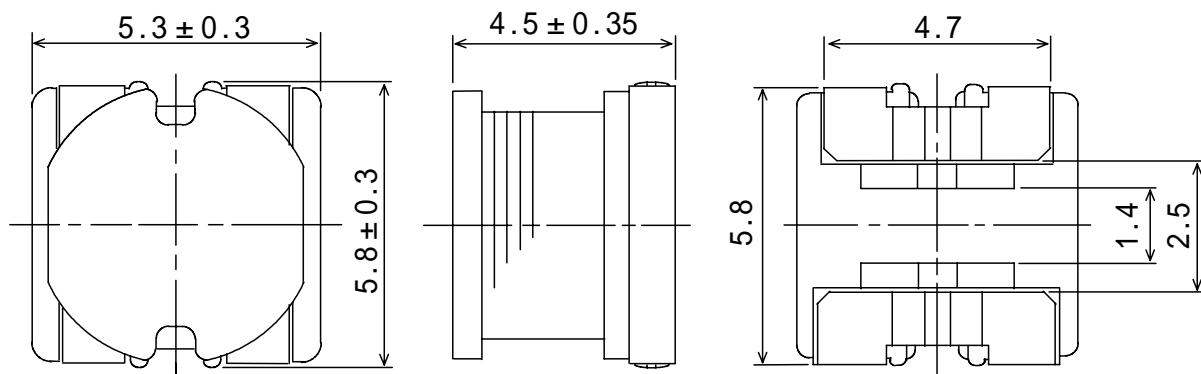
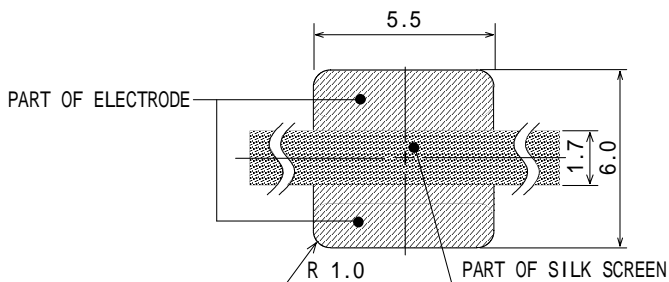


**Type: CR54**
**Product Description**

- 6.1 × 5.6mm Max.(L × W), 4.85mm Max. Height.
- Inductance range: 2.2 ~ 220 μ H
- Rated current range:0.35 ~ 3.84A
- In addition to the standard versions of inductors shown here, custom inductors are available to meet your exact requirements.


**Feature**

- Magnetically unshielded construction.
- Ideally used in A/V equipment, LCD TV,DSC/DVC, Game Machine, DVC, HDD, Notebook PC, etc as DC-DC Converter inductors.
- RoHS Compliance

**Dimensions (mm)**

**Land Pattern (mm)**


**Type: CR54**
**Specification**

Part Name	Stamp	Inductance [Within] ( $\mu$ H ) 1	D.C.R. ( ) [MAX.] (at 20 )	Rated Current ( A ) 2	S.R.F. (MHz) [TYP.]
CR54NP-2R2M	2R2	2.2 $\pm$ 20 %	23.4m	3.84	36.0
CR54NP-2R7M	2R7	2.7 $\pm$ 20 %	26.0m	3.44	32.9
CR54NP-3R3M	3R3	3.3 $\pm$ 20 %	28.6m	3.20	30.5
CR54NP-3R9M	3R9	3.9 $\pm$ 20 %	35.1m	3.00	26.5
CR54NP-4R4M	4R4	4.4 $\pm$ 20 %	39.0m	2.80	24.3
CR54NP-5R0M	5R0	5.0 $\pm$ 20 %	44.2m	2.60	23.1
CR54NP-5R6M	5R6	5.6 $\pm$ 20 %	49.4m	2.48	20.8
CR54NP-6R4M	6R4	6.4 $\pm$ 20 %	52.0m	2.20	20.4
CR54NP-7R6M	7R6	7.6 $\pm$ 20 %	62.4m	2.08	19.6
CR54NP-8R5M	8R5	8.5 $\pm$ 20 %	67.6m	1.84	18.9
CR54NP-100M	100	10 $\pm$ 20 %	0.10	1.44	30.6
CR54NP-120M	120	12 $\pm$ 20 %	0.12	1.40	27.7
CR54NP-150M	150	15 $\pm$ 20 %	0.14	1.30	25.9
CR54NP-180M	180	18 $\pm$ 20 %	0.15	1.23	23.3
CR54NP-220M	220	22 $\pm$ 20 %	0.18	1.11	19.5
CR54NP-270M	270	27 $\pm$ 20 %	0.20	0.97	17.5
CR54NP-330L	330	33 $\pm$ 15 %	0.23	0.88	16.3
CR54NP-390L	390	39 $\pm$ 15 %	0.32	0.80	15.8
CR54NP-470L	470	47 $\pm$ 15 %	0.37	0.72	13.6
CR54NP-560K	560	56 $\pm$ 10 %	0.42	0.68	12.1
CR54NP-680K	680	68 $\pm$ 10 %	0.46	0.61	11.7
CR54NP-820K	820	82 $\pm$ 10 %	0.60	0.58	10.2
CR54NP-101K	101	100 $\pm$ 10 %	0.70	0.52	9.24
CR54NP-121K	121	120 $\pm$ 10 %	0.93	0.48	8.61
CR54NP-151K	151	150 $\pm$ 10 %	1.10	0.40	8.28
CR54NP-181K	181	180 $\pm$ 10 %	1.38	0.38	6.42
CR54NP-221K	221	220 $\pm$ 10 %	1.57	0.35	5.73

**Description of part name**

CR54NP-2R2M

- B Box
- C Carrier Tape

1.Measuring conditions      2.2  $\mu$  H ~ 8.5  $\mu$  H ; at 7.96M Hz  
    10  $\mu$  H ~ 82  $\mu$  H ; at 2.52MHz  
    100  $\mu$  H ~ 220  $\mu$  H ; at 1 kHz

2.Rated current: The D.C. current at which the inductance decreases to 90% of it's initial value or when  $t=40$  , whichever is lower( $T_a=20$  ).