

SF3000C-JQ Series (RoHS Compliant)

3-phase 3-line 500VAC

Wide range high attenuation Type



Applications

For EMC Anechoic, Shielded Chamber

Specifications

Part No.	Rated Current	Weight	Dimensions [mm]										fig
			A	B	C	D	E	F	G	H	J	K	
SF3030C-JQ	30A	11kg	470	200	100	450	80	30	CTC19	500	M6	AWG10	fig1
SF3060C-JQ	60A	14kg	600		130	570	75	65	CTC25			AWG6	fig2
SF3100C-JQ	100A	31kg	860	230	180	830	80	80	CTC39	M10	MLFC38mmφ	fig3	
Rated Voltage	500VAC max												
Leakage Current	3.2A max/500VAC 60Hz (Please use Insulation Transformer together)												
Ambient temp.	-20 up to 50 Deg. C												

fig. 1 (30A)

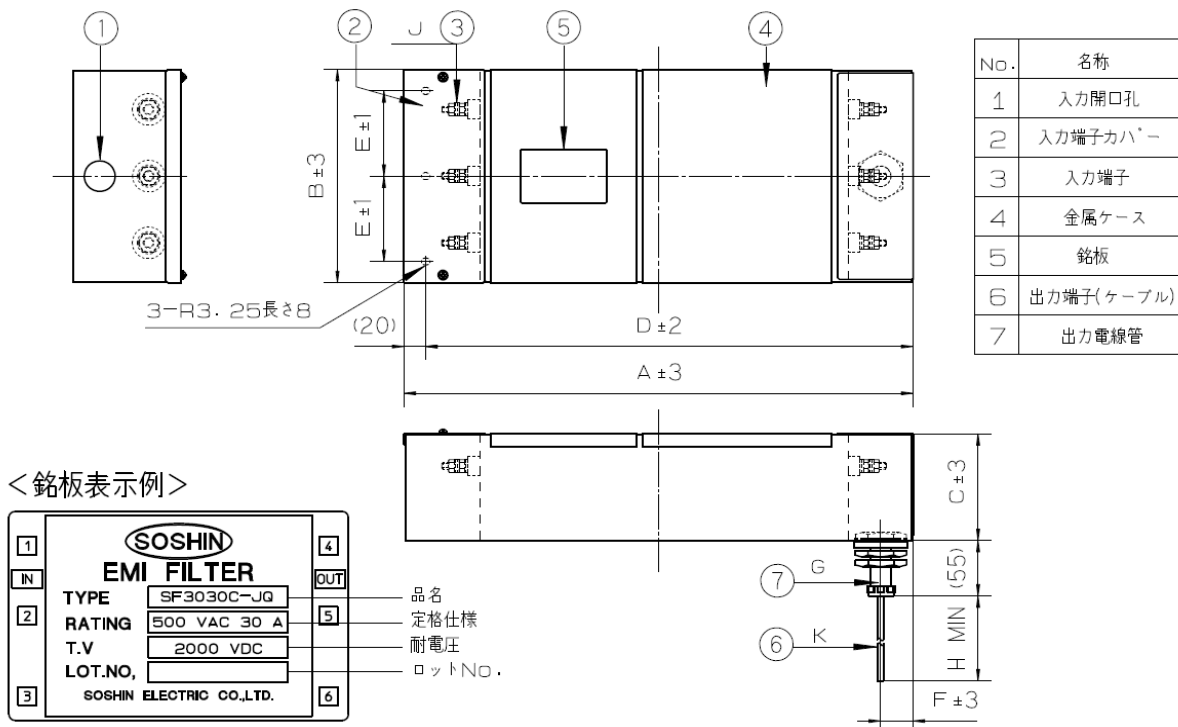


fig. 2 (60A)

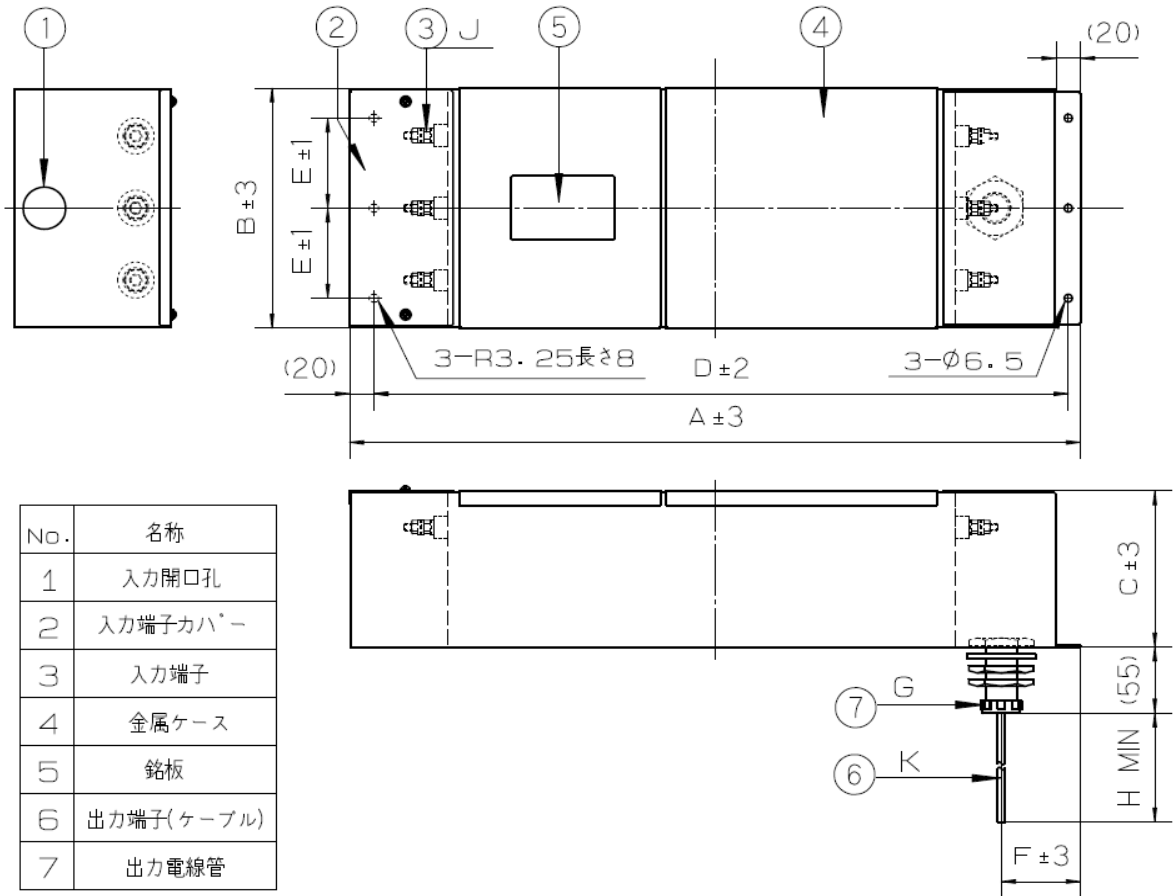
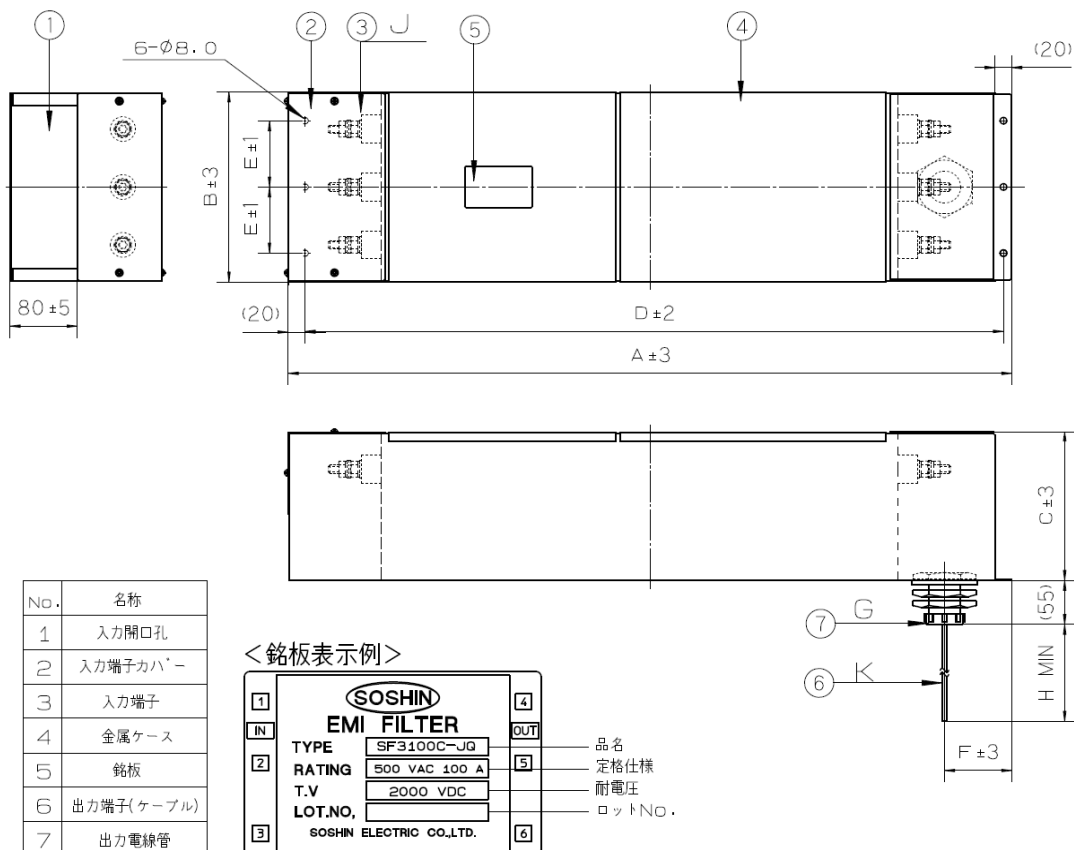
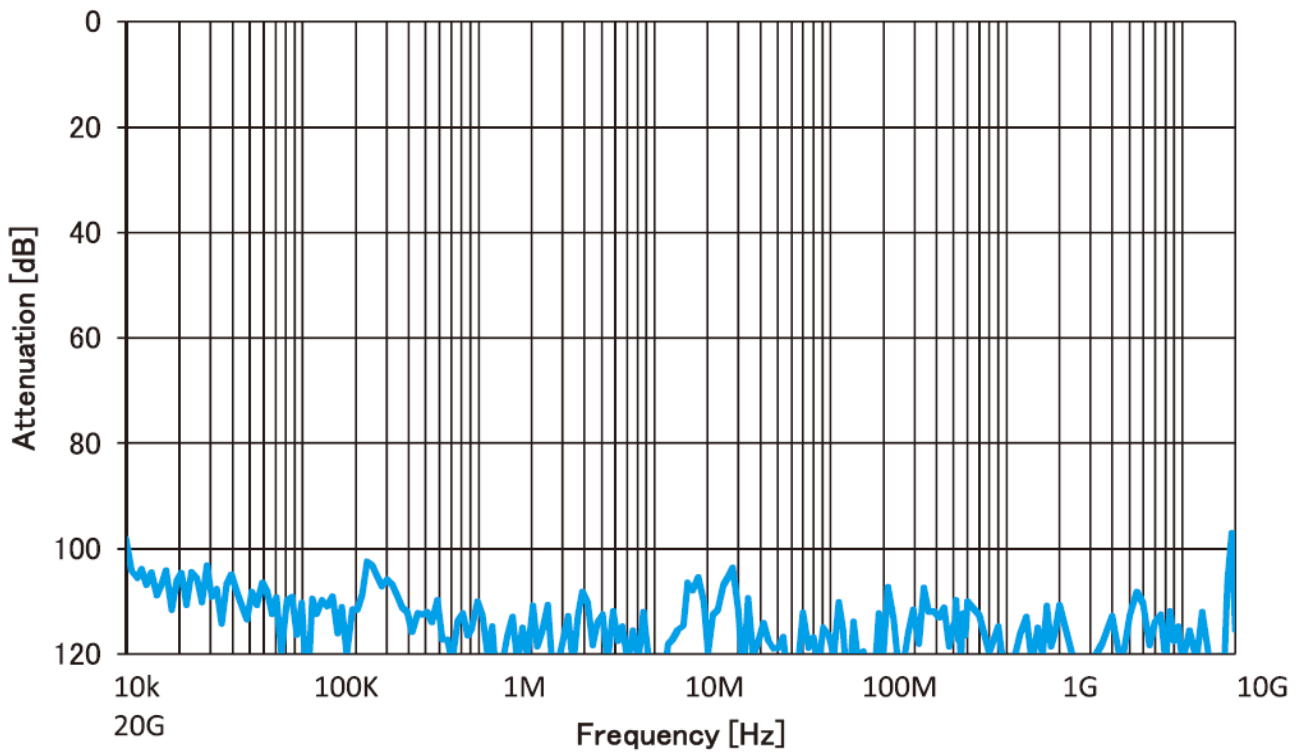


fig. 3 (100A)



Characteristics (Typical)



Circuit Diagram

