

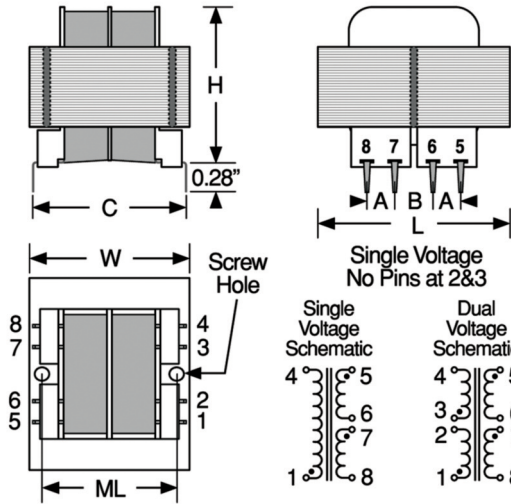
# SERIES

**6012R-6017R & 6022R-6027R**  
**6012-6017 & 6022-6027**

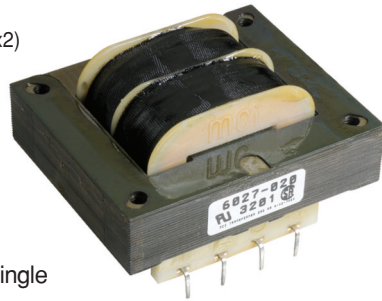
RoHS  
Compliant

Traditional  
First Quality

## Horizontal PC Power Transformers



Actual Size (60x2)



**UL Certified**  
 Recognized component  
 Underwriters Labs, Inc.  
 CSA Labeled

**Primary Voltage**  
**Series 6012 - 6017** 115 Single  
**Series 6022 - 6027** 115 -  
 230 Dual

**To Order** For Single Voltage, insert numeral 1 for "x" in Part Number listed in tables; for Dual Voltage, insert numeral 2 for "x" in Part Number listed in tables.

**Operating Frequency** 50/60 Hz

**Operating Temperature** 130° C

2500 V RMS Hipot

Split bobbin non-concentric winding

Dots on schematic indicate like polarity

**Note** Series 6017 and 6027 – 4 mounting holes  
 2<sup>3</sup>/<sub>16</sub> in. x 1<sup>3</sup>/<sub>4</sub> in. for #6 screw

\*Complete part # must include series # PLUS the dash #

For surface finish information,  
 refer to [www.delevanfinishes.com](http://www.delevanfinishes.com)

PART NUMBER	SECONDARY VOLTAGE SERIES CONNECTION		SECONDARY VOLTAGE PARALLEL CONNECTION		SECONDARY CURRENT SERIES CONNECTION		SECONDARY CURRENT PARALLEL CONNECTION	
	VA	VA	VA	VA	VA	VA	VA	VA
60x2-010	1.1	10.0	5.0	0.110	0.220			
60x2-012	1.1	12.6	6.3	0.090	0.180			
60x2-016	1.1	16.0	8.0	0.070	0.140			
60x2-020	1.1	20.0	10.0	0.055	0.110			
60x2-024	1.1	24.0	12.0	0.045	0.090			
60x2-028	1.1	28.0	14.0	0.040	0.080			
60x2-036	1.1	36.0	18.0	0.030	0.060			
60x2-048	1.1	48.0	24.0	0.023	0.046			
60x2-056	1.1	56.0	28.0	0.020	0.040			
60x2-120	1.1	120.	60.0	0.010	0.020			
60x3-010	2.4	10.0	5.0	0.250	0.500			
60x3-012	2.4	12.6	6.3	0.200	0.400			
60x3-016	2.4	16.0	8.0	0.150	0.300			
60x3-020	2.4	20.0	10.0	0.120	0.240			
60x3-024	2.4	24.0	12.0	0.100	0.200			
60x3-028	2.4	28.0	14.0	0.085	0.170			
60x3-036	2.4	36.0	18.0	0.065	0.130			
60x3-048	2.4	48.0	24.0	0.050	0.100			
60x3-056	2.4	56.0	28.0	0.045	0.090			
60x3-120	2.4	120.	60.0	0.020	0.040			
60x4-010	6.0	10.0	5.0	0.600	1.200			
60x4-012	6.0	12.6	6.3	0.500	1.000			
60x4-016	6.0	16.0	8.0	0.400	0.800			
60x4-020	6.0	20.0	10.0	0.300	0.600			
60x4-024	6.0	24.0	12.0	0.250	0.500			
60x4-028	6.0	28.0	14.0	0.200	0.400			
60x4-036	6.0	36.0	18.0	0.170	0.340			
60x4-048	6.0	48.0	24.0	0.125	0.250			
60x4-056	6.0	56.0	28.0	0.110	0.220			
60x4-120	6.0	120.	60.0	0.050	0.100			
60x5-010	12.	10.0	5.0	1.200	2.400			
60x5-012	12.	12.6	6.3	1.000	2.000			
60x5-016	12.	16.0	8.0	0.800	1.600			
60x5-020	12.	20.0	10.0	0.600	1.200			
60x5-024	12.	24.0	12.0	0.500	1.000			
60x5-028	12.	28.0	14.0	0.420	0.840			
60x5-036	12.	36.0	18.0	0.350	0.700			
60x5-048	12.	48.0	24.0	0.250	0.500			
60x5-056	12.	56.0	28.0	0.220	0.440			
60x5-120	12.	120.	60.0	0.100	0.200			
60x6-010	20.	10.0	5.0	2.000	4.000			
60x6-012	20.	12.6	6.3	1.600	3.200			
60x6-016	20.	16.0	8.0	1.250	2.500			
60x6-020	20.	20.0	10.0	1.000	2.000			
60x6-024	20.	24.0	12.0	0.800	1.600			
60x6-028	20.	28.0	14.0	0.700	1.400			
60x6-036	20.	36.0	18.0	0.550	1.100			
60x6-048	20.	48.0	24.0	0.400	0.800			
60x6-056	20.	56.0	28.0	0.350	0.700			
60x6-120	20.	120.	60.0	0.160	0.320			
60x7-010	36.	10.0	5.0	3.600	7.200			
60x7-012	36.	12.6	6.3	2.850	5.700			
60x7-016	36.	16.0	8.0	2.250	4.500			
60x7-020	36.	20.0	10.0	1.800	3.600			
60x7-024	36.	24.0	12.0	1.500	3.000			
60x7-028	36.	28.0	14.0	1.300	2.600			
60x7-036	36.	36.0	18.0	1.000	2.000			
60x7-048	36.	48.0	24.0	0.750	1.500			
60x7-056	36.	56.0	28.0	0.650	1.300			
60x7-120	36.	120.	60.0	0.300	0.600			

### Physical Parameters & Mounting Information

	L		W		H		A		B		C		ML		Screw Size	Weight	
	in.	mm	in.	mm	in.	mm	in.	mm	in.	mm	in.	mm	lbs.	grams			
60x2	1.38	34.93	1.13	28.58	0.94	23.81	0.25	6.35	0.25	6.35	1.20	30.48	—	—	none	0.17	77
60x3	1.38	34.93	1.13	28.58	1.19	30.16	0.25	6.35	0.25	6.35	1.20	30.48	—	—	none	0.25	113
60x4	1.63	41.28	1.31	33.34	1.31	33.34	0.25	6.35	0.35	8.89	1.28	32.51	1.06	26.99	4-40	0.44	200
60x5	1.88	47.63	1.56	39.69	1.44	36.51	0.30	7.62	0.40	10.16	1.41	35.81	1.25	31.75	4-40	0.70	317
60x6	2.25	57.15	1.88	47.63	1.44	36.51	0.30	7.62	0.40	10.16	1.60	40.64	1.50	38.10	4-40	0.80	363
60x7	2.63	66.68	2.19	55.56	1.56	39.69	0.40	10.16	0.40	10.16	1.85	46.99	—	See Note	—	1.10	499