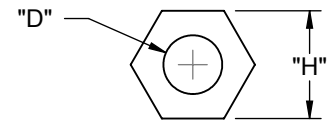
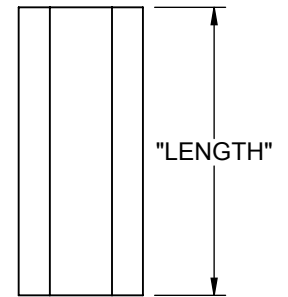


NOTES:  
 1. MATERIAL: CPVC (RMS-11)  
 2. COLOR: LIGHT GRAY.

FOR #4 SCREW		FOR #6 SCREW		FOR #8 SCREW	
PART NO.	LENGTH ±.015[±0.38]	PART NO.	LENGTH ±.010 [±0.25]	PART NO.	LENGTH ±.010 [±0.25]
HS4-3	3/8 [9.5]	-	-	-	-
HS4-4	1/2 [12.7]	HS6-4	1/2 [12.7]	-	-
HS4-5	5/8 [15.9]	HS6-5	5/8 [15.9]	HS8-5	5/8 [15.9]
HS4-6	3/4 [19.1]	HS6-6	3/4 [19.1]	HS8-6	3/4 [19.1]
HS4-7	7/8 [22.2]	HS6-7	7/8 [22.2]	HS8-7	7/8 [22.2]
HS4-8	1 [25.4]	HS6-8	1 [25.4]	HS8-8	1 [25.4]
HS4-10	1-1/4 [31.8]	HS6-10	1-1/4 [31.8]	HS8-10	1-1/4 [31.8]
HS4-12	1-1/2 [38.1]	HS6-12	1-1/2 [38.1]	HS8-12	1-1/2 [38.1]
HS4-14	1-3/4 [44.5]	HS6-14	1-3/4 [44.5]	HS8-14	1-3/4 [44.5]
HS4-16	2 [50.8]	HS6-16	2 [50.8]	HS8-16	2 [50.8]
-	-	-	-	HS8-18	2-1/4 [57.2]
-	-	-	-	HS8-20	2-1/2 [63.5]
-	-	-	-	HS8-22	2-3/4 [69.9]
-	-	-	-	HS8-24	3 [76.2]

PART NO.	"H"	"D" ±.005 [±0.13]
HS4	.187±.006 [4.8±0.15]	.102 [2.6]
HS6	.250±.008 [6.4±0.20]	.110 [2.8]
HS8	.375±.010 [9.5±0.25]	.141 [3.6]



TITLE: <b>HEX SPACER STANDOFFS</b>					DWG IN IN [MM]	
CREATED USING SOLIDWORKS	FILE #: HS	DWN: SM	APP: -	FINAL		
TOLERANCES UNLESS NOTED .XX=±.010 .XXX=±.005 FRAC.=±1/64 ANG.=±1°	SHEET: 1 OF 2	SHEET SIZE: A	DT: 07/02/04	CHKD: -	PART #	PRINT TYPE
	RE: RICHCO, INC.	RICHCO, INC. ENG@RICHCO-INC.COM (773) 539-4060		SEE TABLE	CA	

REV.	DESCRIPTION	ENGR.	DATE
D	SEE ECN #1337 FOR CHANGES	SK	07/10/07
C	SEE ECN #816 FOR CHANGES	SM	07/02/04
B	SEE ECN #477 FOR CHANGES	SM	10/02/02
A	FILE # WAS 02010	RG	11/16/00