

PLEASE CHECK WWW.MOLEX.COM FOR LATEST PART INFORMATION

Part Number: [0894011510](#)
Status: **Active**
Description: 2.00mm (.079") Pitch Wire-to-Board Header, Right Angle, 15 Circuits

Documents:

[3D Model](#) [Product Specification PS-87369-0002 \(PDF\)](#)
[Drawing \(PDF\)](#) [RoHS Certificate of Compliance \(PDF\)](#)

Agency Certification

CSA LR19980
 UL E29179

General

Product Family PCB Headers
 Series [89401](#)
 Application Wire-to-Board
 Product Name N/A

Physical

Breakaway No
 Circuits (Loaded) 15
 Circuits (maximum) 15
 Color - Resin Natural
 Durability (mating cycles max) 30
 First Mate / Last Break No
 Flammability 94V-0
 Glow-Wire Compliant No
 Guide to Mating Part No
 Keying to Mating Part None
 Lock to Mating Part Yes
 Material - Plating Mating Tin
 Material - Plating Termination Tin
 Material - Resin Nylon
 Number of Rows 1
 Orientation Right Angle
 PC Tail Length (in) 0.118 In
 PC Tail Length (mm) 3.00 mm
 PCB Locator No
 PCB Retention Yes
 PCB Thickness Recommended (in) 0.045 In
 PCB Thickness Recommended (mm) 1.20 mm
 Packaging Type Bag
 Pitch - Mating Interface (in) 0.079 In
 Pitch - Mating Interface (mm) 2.00 mm
 Plating min: Mating (µin) 50
 Plating min: Mating (µm) 1.27
 Plating min: Termination (µin) 50
 Plating min: Termination (µm) 1.27
 Polarized to PCB No
 Shrouded Partial
 Stackable No
 Temperature Range - Operating -25°C to +85°C
 Termination Interface: Style Through Hole

Electrical

Current - Maximum per Contact 4A

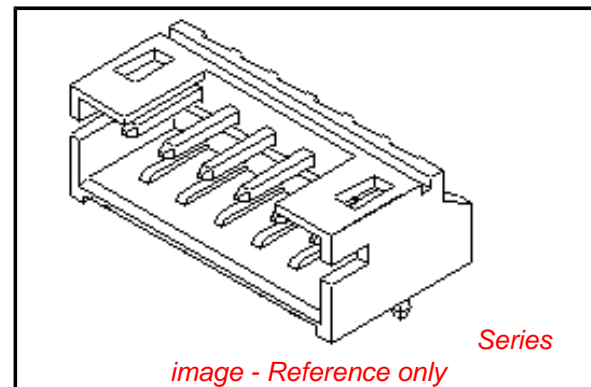


image - Reference only

EU RoHS

ELV and RoHS Compliant
REACH SVHC
 Not Reviewed
Halogen-Free Status

China RoHS



Not Reviewed

Need more information on product environmental compliance?

Email productcompliance@molex.com
 For a multiple part number RoHS Certificate of Compliance, [click here](#)

Please visit the [Contact Us](#) section for any non-product compliance questions.

Search Parts in this Series

[89401Series](#)

Mates With

[90147 C-Grid® PC Board Connector](#). [90123 C-Grid III™ Modular Crimp Housing](#)

Voltage - Maximum

250V

Material Info

Reference - Drawing Numbers

Product Specification

PS-87369-0002, RPS-87369-001

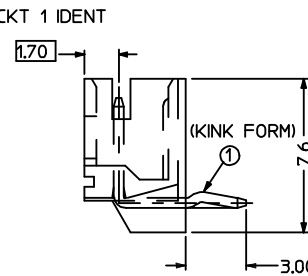
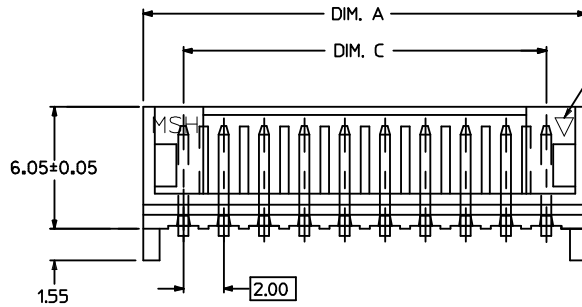
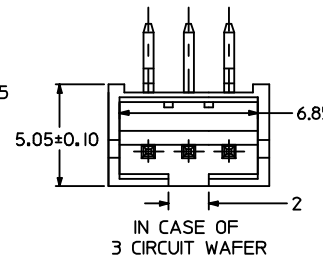
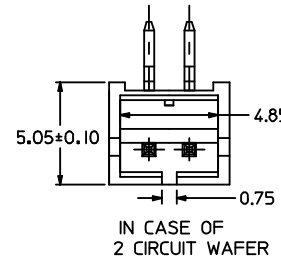
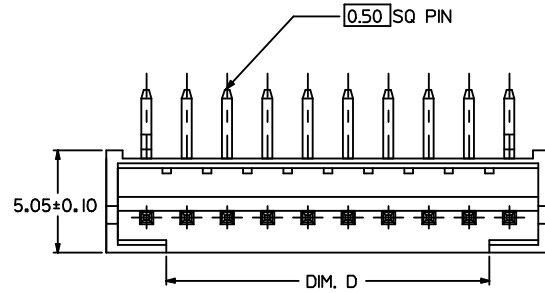
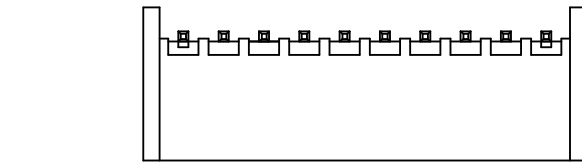
This document was generated on 06/08/2010

PLEASE CHECK WWW.MOLEX.COM FOR LATEST PART INFORMATION

CIRCUITS	ORDER NO.	DIM. C	DIM. D	DIM. A	REMARK
2	89401-021*	2.00	0.75	6.00	
3	89401-031*	4.00	2.00	8.00	
4	89401-041*	6.00	4.00	10.00	
5	89401-051*	8.00	6.00	12.00	VOID PIN 4
	89401-0520				
6	89401-061*	10.00	8.00	14.00	
7	89401-071*	12.00	10.00	16.00	
8	89401-081*	14.00	12.00	18.00	
9	89401-091*	16.00	14.00	20.00	
10	89401-101*	18.00	16.00	22.00	VOID PIN 7
	89401-1020				
11	89401-111*	20.00	18.00	24.00	
12	89401-121*	22.00	20.00	26.00	
13	89401-131*	24.00	22.00	28.00	
14	89401-141*	26.00	24.00	30.00	
15	89401-151*	28.00	26.00	32.00	
16	89401-161*	30.00	28.00	34.00	

KINK TO BE APPLIED AS FOLLOW

CKT NO. CKT	1	2	3	4	5	N-2	N-1	N
6 CKT	①	—	—	—	—	—	—	①
5 CKT	①	—	—	—	①	—	—	—
4 CKT	①	—	—	①	—	—	—	—
3 CKT	①	—	①	—	—	—	—	—
2 CKT	①	①	—	—	—	—	—	—



PART NO. LEGEND

89401 - ** 1(2) *

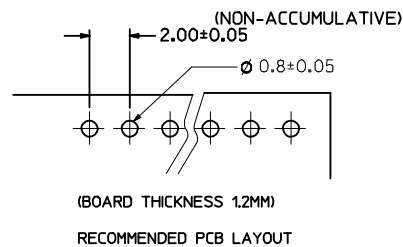
CKT SIZE

COLOR OPTION

- 0 - NATURAL (WHITE)
- 2 - RED
- 3 - YELLOW
- 4 - BLUE
- 6 - GREEN
- 7 - BLACK

NOTE:

1. PRODUCT SPEC. PS-87369-0001 APPLIES.
2. BULK PACK IN PVC BAG WITH 1000 PCS PER BAG.
3. MATERIAL :
HOUSING - NYLON 66 94V0. COLOR: SEE OPTION
TERMINAL - BRASS
4. FINISH :
TERMINAL - TIN THICKNESS 1.27-2.54 MICROMETER OVER
NICKEL THICKNESS 2.54 MICROMETER MIN OVERALL
COPPER THICKNESS 1.07 MICROMETER MIN OVERALL



NEW RELEASE EC NO: SH2006-0287 DR: WINDHU 2005/12/06 CH: KD-HARVEY 2005/12/08 APPR: GCHEN 2005/12/09	QUALITY SYMBOLS ▽=0 ◻=0	GENERAL TOLERANCES (UNLESS SPECIFIED)		DIMENSION STYLE MM ONLY	SCALE 1:4	DESIGN UNITS METRIC	THIRD ANGLE PROJECTION		
		4 PLACES ± --- ± --- 3 PLACES ± --- ± --- 2 PLACES ± 0.25 ± --- 1 PLACE ± 0.25 ± ---	mm INCH ± --- ± --- ± 0.25 ± --- ± 0.25 ± ---	DRAWN BY SAM SHIN	DATE 1998/10/22	TITLE 2.0MM WIRE-BOARD RIGHT ANGLE HEADER			
		ANGULAR ± 3 °		APPROVED BY	DATE	MOLEX INCORPORATED			
		DRAFT WHERE APPLICABLE MUST REMAIN WITHIN DIMENSIONS		MATERIAL NO. SEE CHART	DOCUMENT NO. SD-89401-**1*	SHEET NO. 1 OF 1			