

GDT introduction: Gas discharge tubes (GDT) use noble gasses enclosed in ceramic tubes to provide an alternate circuit path for voltage spikes. The ceramic envelope and with nickel connectors allow for high loads and Surging offers products that function at 20KA, 40KA, 50KA, 60KA, 100KA & 150KA. The breakdown voltages of the devices have a wide range (up to 20% tolerance). Major applications are high frequency telecommunication lines, stations, security systems, HID and high quality Surge Protection Devices (SPD).

Features

1. RoHS & HF compliant
2. SMD Structure
3. DC Spark-over voltage: 70~3600V
4. Low Capacitance
5. Agency Recognition : UL
6. Operating temperature: -30°C ~ +85°C Storage temperature: -40°C ~ +115°C

Recommended Applications

1. Cable Modem
2. xDSL
3. Set-Top Box
4. TV sets
5. Power supplier
6. Consumer electronics

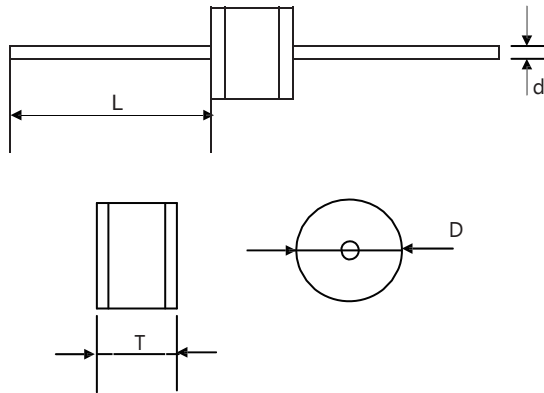
Electrical Characteristics

Part No.		DC Spark-over Voltage	Maximum Impulse Breakdown Voltage		Max. Impulse Discharge Current (8/20 μ s)		Impulse Life (10/1000 μ s)	Normal Alternating Discharge Current		DC Holdover Voltage	Minimum Insulation Resistance	Maximum Capacitance (1MHz)
			100V/S	100V/ μ S	1KV/ μ s	1 times		10 times	100 A			
DIP	SMD	(V)	(V)	(V)	(KA)		Times	(A)		(V)	(G Ω)	(pF)
2R070-5L	2R070-5S	70 \pm 20%	700	800	10	5	300	10	25	52	1	1
2R075-5L	2R075-5S	75 \pm 20%	700	800	10	5	300	10	25	52	1	1
2R090-5L	2R090-5S	90 \pm 20%	600	700	10	5	300	10	25	52	1	1
2R150-5L	2R150-5S	150 \pm 20%	600	700	10	5	300	10	25	52	1	1
2R230-5L	2R230-5S	230 \pm 20%	600	700	10	5	300	10	25	80	1	1
2R350-5L	2R350-5S	350 \pm 20%	700	900	10	5	300	10	25	150	1	1
2R400-5L	2R400-5S	400 \pm 20%	800	1000	10	5	300	10	25	150	1	1
2R470-5L	2R470-5S	470 \pm 20%	900	1100	10	5	300	10	25	150	1	1
2R600-5L	2R600-5S	600 \pm 20%	1300	1500	10	5	300	10	25	150	1	1
2R800-5L	2R800-5S	800 \pm 20%	1500	1700	10	5	300	10	25	150	1	1
2R1000-5L	2R1000-5S	1000 \pm 20%	1600	1800	5	3	300	10	25	150	1	1
2R1200-5L	2R1200-5S	1200 \pm 20%	1800	2000	5	3	300	10	25	150	1	1
2R1500-5L	2R1500-5S	1500 \pm 20%	2200	2400	5	3	300	10	25	150	1	1
2R2000-5L	2R2000-5S	2000 \pm 20%	2800	3000	5	3	300	10	25	150	1	1
2R2500-5L	2R2500-5S	2500 \pm 20%	3300	3500	5	3	300	10	25	150	1	1
2R3000-5L	2R3000-5S	3000 \pm 20%	3800	4000	5	3	300	10	25	150	1	1
2R3600-5L	2R3600-5S	3600 \pm 20%	4400	4600	5	3	300	10	25	150	1	1

DC Spark-over Voltage	DC Measuring Voltage
70-90V	50V
150-400V	100V
1000-3600V	250V

Dimension

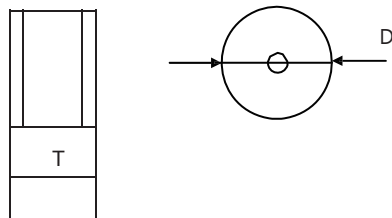
2R-5L (Axial lead type)



Unit:mm

Item	Dimensions	
	Spec.	Tolerance
D	5.5	+0.3/-0.5
T	6.0	+0.3/-0.5
L	20	Min.
d	0.8	±0.05

2R-5S (No lead type)

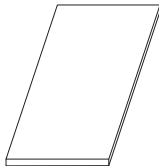
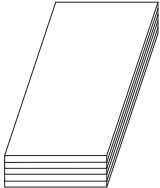
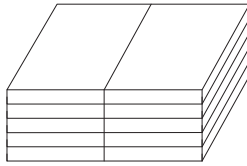


Unit:mm

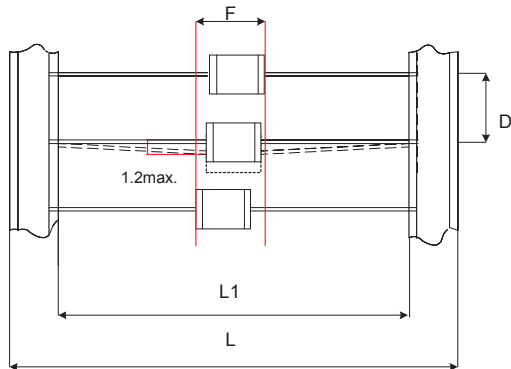
Item	Dimensions	
	Spec.	Tolerance
D	5.5	+0.3/-0.5
T	6.0	+0.3/-0.5

Packaging Taping

Unit:mm

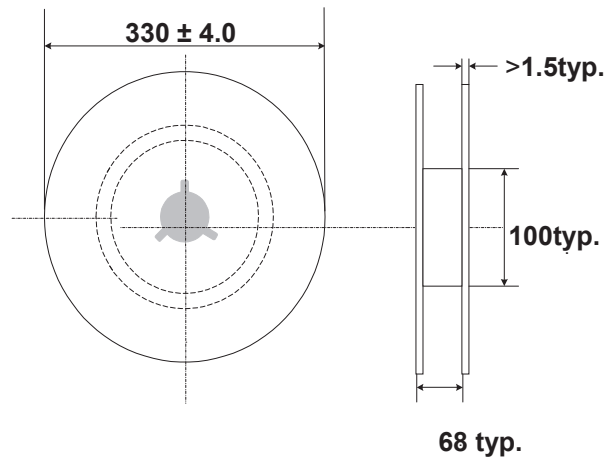
Plastic Tray (265×147×10mm)	Inner Box (270×145×50mm)	Outside Box (310×280×275mm)
		
100 PCS/ Plastic Tray	500 PCS/ Box	5,000 PCS/ Carton

For 2-electrode Axial Lead GDT: 500 PCS/Reel



Unit:mm

Item	Dimensions	
	Spec.	Tolerance
L1	52	±2
L	64	±3
D	10	±0.5
F	T+1.4	Max.



Warehouse Storage Conditions of Products

Storage Conditions:

1. Storage Temperature: -10°C~+40°C

2. Relative Humidity: ≤75%RH

3. Keep away from corrosive atmosphere and sunlight.

Period of Storage: 1 year

Shanghai Leiditech Electronic Co.,Ltd
 Email: sale1@leiditech.com
 Tel : +86- 021 50828806
 Fax : +86- 021 50477059