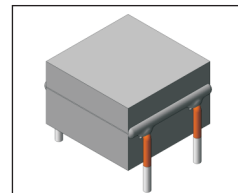


Through Hole Power Inductors

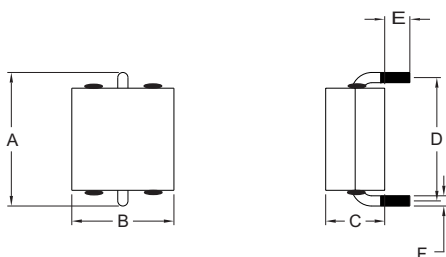
THCBR1090 Type

Features

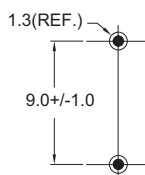
- High current (I_{sat} up to 70A) though hole type.
- Magnetically shielded, suitable for high density mounting.
- High energy storage and low DCR.
- Provided with embossed carrier tape packing.
- Ideal for power source circuits, DC-DC converter, DC-AC inverters inductor application.
- In addition to the standard versions shown here, customized inductors are available to meet your exact requirements.



Mechanical Dimension:



RECOMMENDED PAD PATTERNS



UNIT:mm/inch
 A = 10.5/0.42 MAX
 B = 9.0/0.36 MAX.
 C = 9.0/0.36 MAX
 D = 9.0±0.5/0.36±0.02
 E = 3.5±0.5/0.14±0.02
 F = 0.9/0.03

Electrical Characteristics: At 25°C: 100KHz, 1.0V

PART NO.	L^1 (nH)	DCR (mΩ) MAX	I_{sat}^2 (Adc)	I_{rms}^3 (Adc)
THCBR1090-151	150	0.70	73	40
THCBR1090-181	180	0.70	60	40
THCBR1090-241	240	0.70	40	40
THCBR1090-281	280	0.70	36	40
THCBR1090-351	350	0.70	26	40
THCBR1090-401	400	0.70	20	40
THCBR1090-551	550	0.70	12	40
THCBR1090-901	900	0.70	6.0	40

- 1.Tolerance of inductance : 150~900nH±20%
2. I_{sat} is the DC current which cause the inductance drop less than 20% of its nominal inductance without current
3. I_{rms} is the DC current which cause the surface temperature of the part increase less than 45°C
- 4.Operating temperature: -40°C to 125°C (including self-temperature rise)



DELTA ELECTRONICS, INC.

(TAOYUAN PLANT CPBG) 252, SAN YING ROAD, KUEISAN INDUSTRIAL ZONE, TAOYUAN SHIEN, 333, TAIWAN, R.O.C.

TEL: 886-3-3591968; FAX: 886-3-3591991

<http://www.deltawww.com>