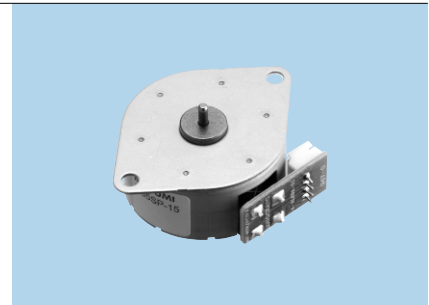


Stepping Motors

M35SP-15, -15K

FEATURES

1. Structural changes of ferrite magnetic motor achieves equal torque with one of neodymium magnet motor in the same size.
2. Compact size, lightweight and high-output torque.
3. Superior quietness during running.



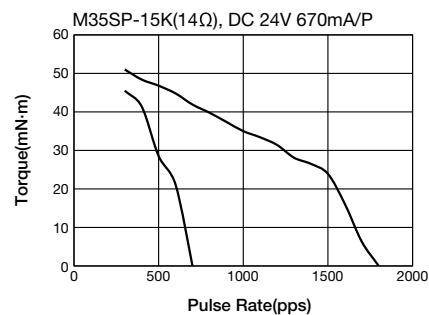
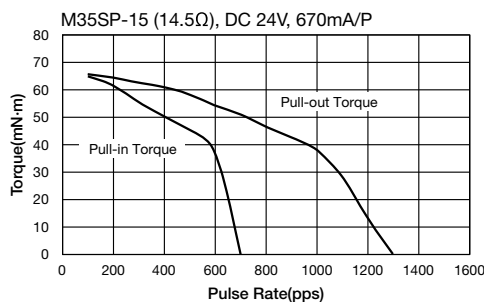
USES

Printers, all -in-one inkjet printers, copier, FAX machines, etc.

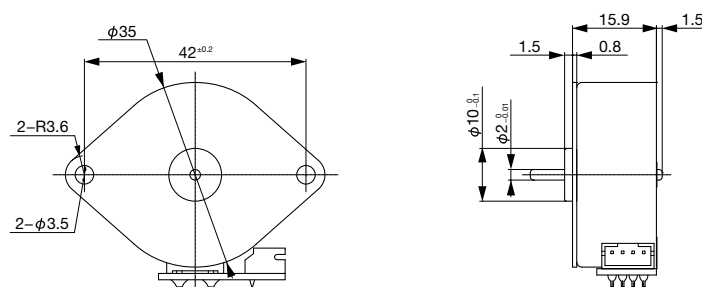
SPECIFICATIONS

Item	M35SP-15	M35SP-15K
Rated Voltage	DC 24V	
Working Voltage	DC 21.6~26.4V	
Rated Current/Phase	670mA(PEAK)	
Coil DC Resistance	14.5Ω/phase±10%	14Ω/phase±10%
Step Angle	7.5°/step	
Drive Method	Constant Current	
Excitation Method	2-2 Phase excitation (Bipolar driving)	
Insulation Class	Class E insulation	
Holding Torque	76.5mN·m	58.2mN·m
Pull-out Torque	45.2mN·m/500pps	46.6mN·m/500pps
Pull-in Torque	58.2mN·m/500pps	28.5mN·m/500pps
Max. Pull-out Pulse Rate	1,310pps	1,830pps
Max. Pull-in Pulse Rate	660pps	620pps

CHARACTERISTICS



DIMENSIONS



Unit : mm
General tolerance : ±0.05

• Any products mentioned in this catalog are subject to any modification in their appearance and others for improvements without prior notification.
• The details listed here are not a guarantee of the individual products at the time of ordering. When using the products, you will be asked to check their specifications.