



FEATURES:

- AC Input : 90-305 Vac Nominal
- Protection: SCP / OVP / OTP
- High Operating Ambient Temp.: -20 °C ~ +60 °C
- Power Factor: > 0.95 @ 115 Vac / > 0.9 @ 230 Vac
- Built-in Active Power Factor Correction
- Surge Protection: L-N 1 kV, L/N-FG 2 kV
- Safety: UL
- EMI: CE / FCC
- Comply with Indoor/Outdoor Waterproof (IP 67)
- Warranty: 5 years (refer to LinkCom warranty policy)
- RoHS Compliant

| PRODUCT SPECIFICATION | | | | | | |
|-----------------------|--------------------|----------------------|-------------------|--------------------------|------------|------------------|
| MODEL | DC OUTPUT POWER(W) | DC OUTPUT VOLTAGE(V) | OUTPUT CURRENT(A) | OUTPUT CURRENT TOLERANCE | EFFICIENCY | O/P NOISE(P-P,V) |
| LCCE-045U951-00 | 46.1 | 36-48 | 0.95 | ±5% | 86% | 4 |
| LCCE-045U112-00 | 46.2 | 32-42 | 1.1 | ±5% | 86% | 4 |
| LCCE-045U132-00 | 46.8 | 27-36 | 1.3 | ±5% | 86% | 3.5 |
| LCCE-045U152-00 | 45 | 23-30 | 1.5 | ±5% | 85% | 4 |
| LCCE-045U192-00 | 45.6 | 18-24 | 1.9 | ±5% | 85% | 3 |
| LCCE-045U232-00 | 46 | 15-20 | 2.3 | ±5% | 84% | 3.5 |
| LCCE-045U302-00 | 45 | 11.2-15 | 3 | ±5% | 83% | 3.5 |
| LCCE-052U132-00 | 52.5 | 31.5-42 | 1.25 | ±5% | 87% | 4.5 |

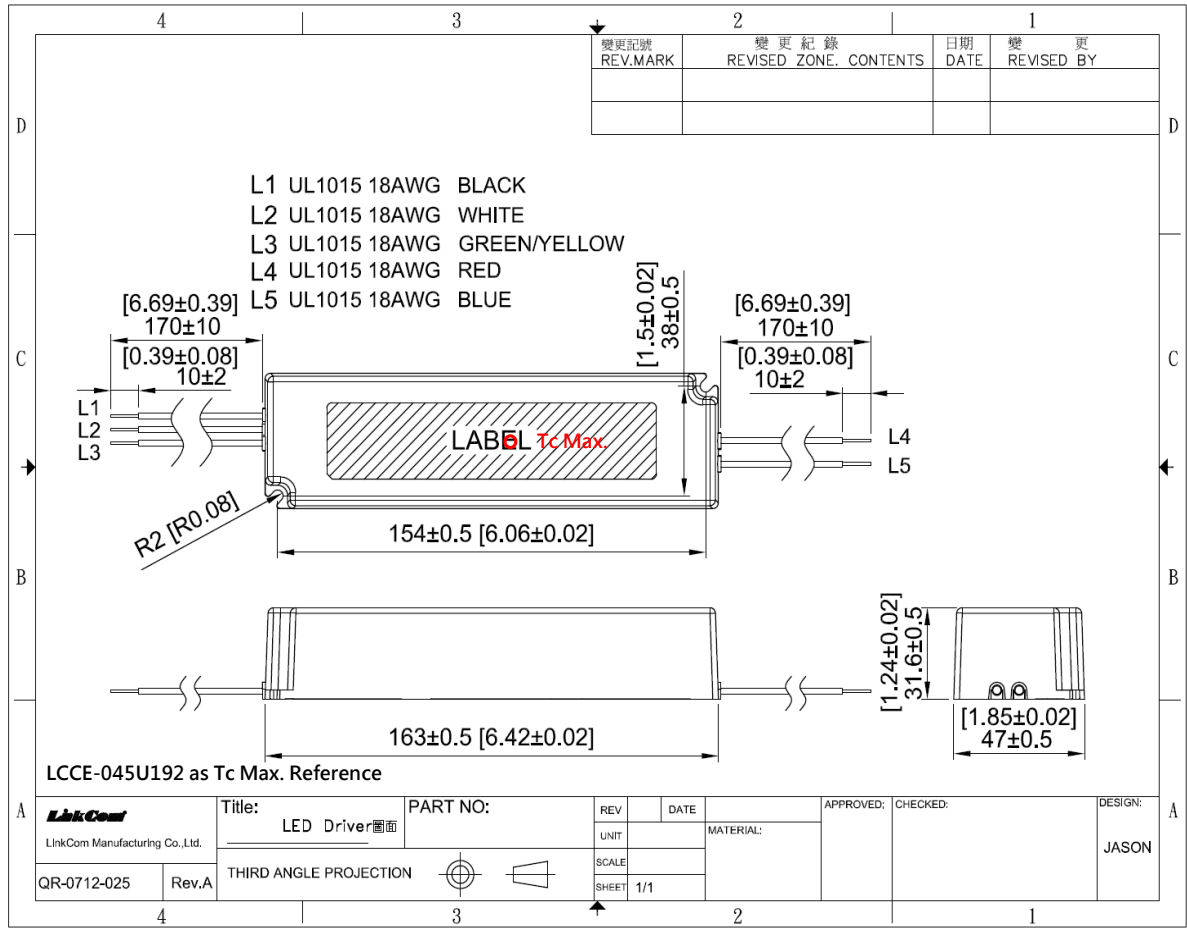
| ELECTRICAL SPECIFICATION | |
|--------------------------|---|
| INPUT VOLTAGE RANGE | 90-305 Vac, 127-431 Vdc, Normal: 100-277 Vac |
| INPUT FREQUENCY | Range: 47-63 Hz, Normal: 50-60 Hz |
| ACTIVE POWER FACTOR | > 0.95 @ 115 Vac / > 0.9 @ 230 Vac |
| THD | NA |
| TURN ON DELAY TIME | 3000 ms at Full Load 115 Vac / 230 Vac |
| AC CURRENT | 0.7 A / 100 Vac |
| INRUSH CURRENT (typ) | COLD START 43A @ 230 Vac |
| LEAKAGE CURRENT | 0.75 mA / 264 Vac |
| SHORT CIRCUIT PROTECTION | SCP will restart automatically after the fault condition is removed |
| OVER VOLTAGE PROTECTION | OVP will restart automatically after the fault condition is removed |
| OVER TEMP. PROTECTION | OTP will restart automatically after the fault condition is removed |
| OVER CURRENT PROTECTION | NA |
| OPERATING TEMP. | -20°C ~ +60°C at Full Load |
| STORAGE TEMP. | -40°C ~ +80°C |
| RELATIVE HUMIDITY | 10% to +90%, non-cond. |
| SAFETY | UL 60950-1 |
| EMI | FCC Part15 / EN55015 |
| WITHSTAND VOLTAGE | I/P-O/P: 4.242 kVdc I/P-FG: 2.5 kVdc I/P-CASE: 2.5 kVdc |
| ISOLATION RESISTANCE | I/P-O/P :100M Ω / 500 Vdc / 25°C / 70% RH |
| DIMENSION (L*W*H) | 163 * 47 * 31.6 mm 【6.42 * 1.85 * 1.24 inch】 |

- (1) All parameters specified at 230 Vac input unless otherwise noted.
- (2) All specifications Typical at 25°C, unless otherwise noted, at normal line and load.
- (3) Ripple and Noise measured directly at pins/terminals at nom. load, pk-pk at 20MHz bandwidth.
- (4) Specified for free-air convection cooling.
- (5) Minimum load is NOT required for proper operation .
- (6) 100% Production Tested.

* REFERENCE: www.linkcom.com.tw

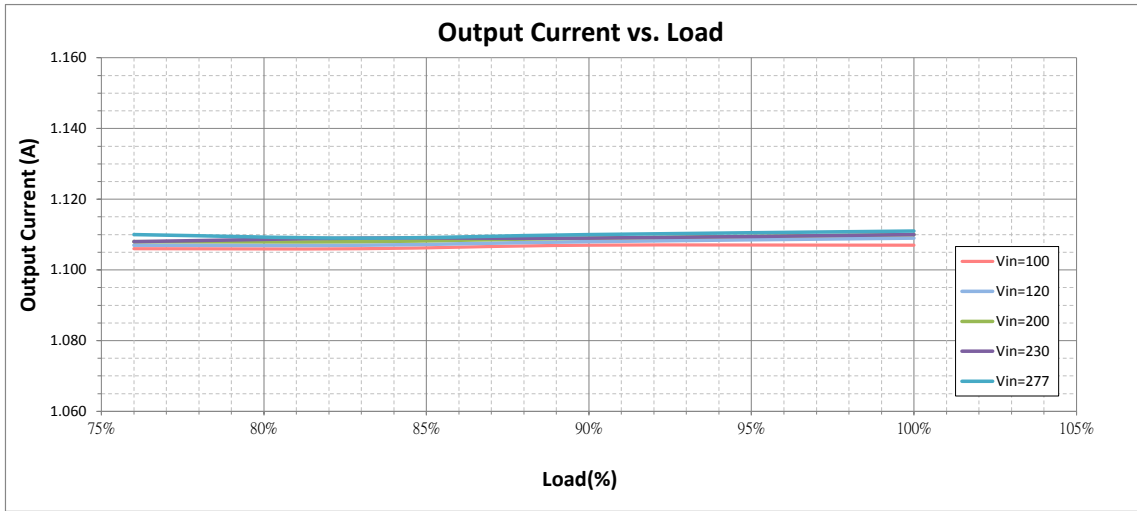
* Please contact sales@linkcom.com.tw, sales@linkcomusa.com for more information

DIMENSIONS

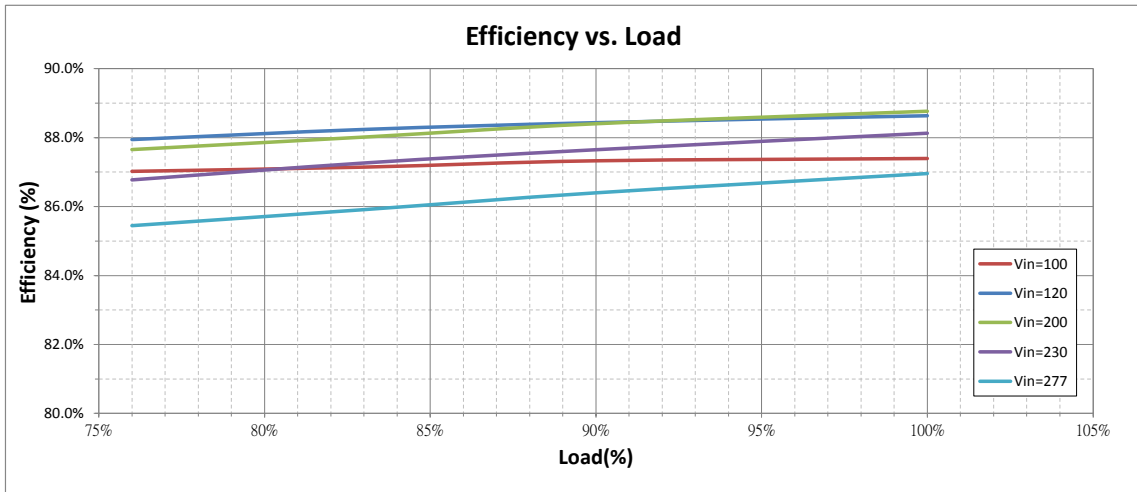


* REFERENCE: www.linkcom.com.tw

Output Current vs. Load(LCCE-045U112-00)



Efficiency vs. Load(LCCE-045U112-00)



PF vs. Load(LCCE-045U112-00)

