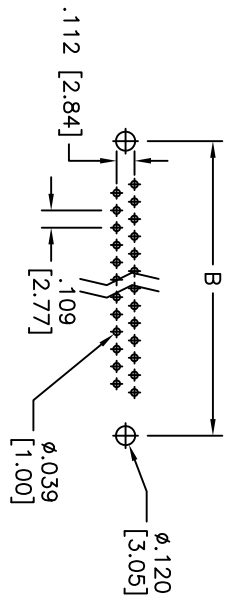
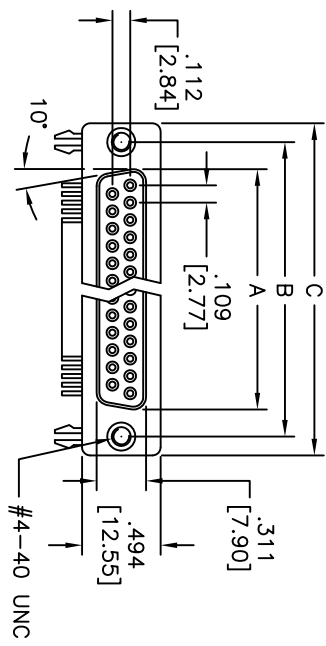
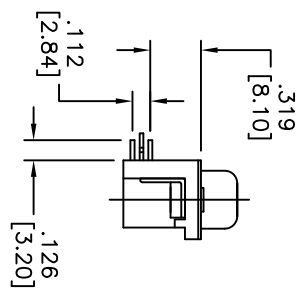
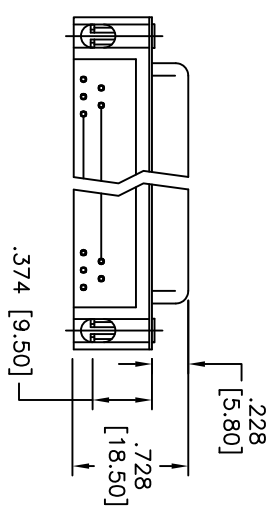


Rev	AWO #	Description	Date	Appr
-		RELEASED	7/21/10	

APPROVED: _____
 DATE: _____ TITLE: _____



RECOMMENDED PCB LAYOUT



DXXX	NO. OF CONTACTS	DIMENSIONS		
		A	B	C
DA15	15	.972 [24.70]	1.311 [33.30]	1.543 [39.20]
DB25	25	1.512 [38.40]	1.852 [47.04]	2.089 [53.05]
DC37	25	2.157 [54.80]	2.500 [63.50]	2.732 [69.40]

SPECIFICATIONS:

Material: PBT, glass reinforced, rated UL 94V-0
 Insulator color: Black
 Contacts: Copper Alloy
 Shell: Steel, Tin plated
 Hardware: Brass, Nickel plated
 Plating: 15u" Gold over Nickel underplate overall

Electrical:
 Operating voltage: 250 VAC max
 Current rating: 3 Amps max
 Contact resistance: 20 mohms max
 Insulation resistance: 1,000 Mohms min
 Dielectric withstanding voltage: 1,000 VAC for 1 minute

Temperature Rating:
 Operating temperature: -65°C to +125°C

Environmental:
 Lead free, RoHS compliant

Recommended soldering temp: 235°C for 5 seconds



ADAM TECH

909 Rahway Avenue, Union, NJ 07083
 Phone: 908-687-5000 Fax: 908-687-5710

TITLE: D-SUB SOCKET, .318" FOOTPRINT, FORKED BOARD LOCKS, #4-40 FLUSH THREADED INSERTS

UNLESS OTHERWISE SPECIFIED ALL DIMENSIONS ARE INCHES [MM]		TOLERANCES: EXCEPT AS NOTED INCHES		HOLE SIZES	
.X	± .10	ØX	± .10		
.XX	± .020	ØXX	± .015		
.XXX	± .015	ØXXX	± .010		
APPROVALS	DATE				
DRAWN	DY	7/21/10			
CHECKED					
APPROVED					
REF: S00087T	SCALE: NTS	SHEET 1 OF 1			