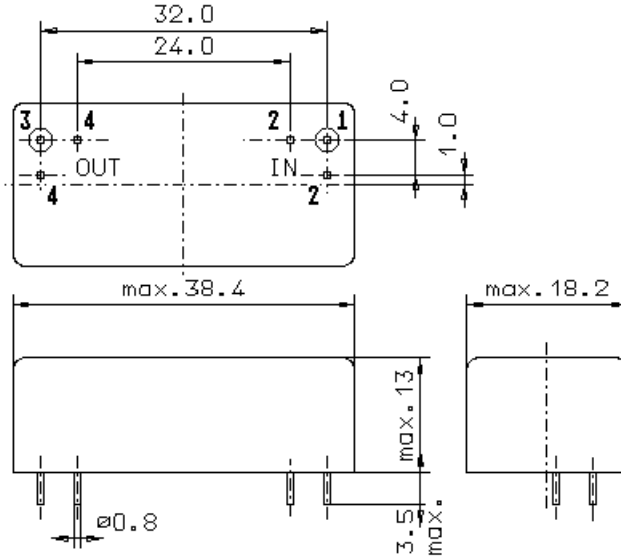


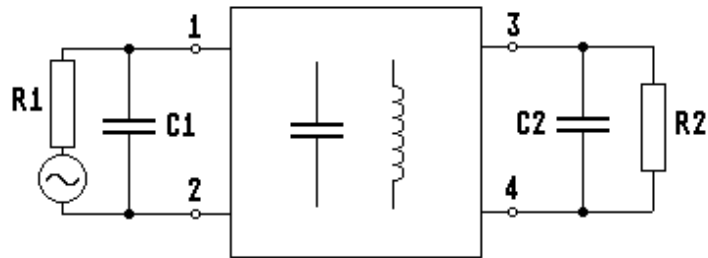
Specification for LC low-pass filter: **LC 0-31.0/06**

1. General

1.1. Package:



GM17



- | | |
|-----------------------------------|----------------|
| 1.2. Type name: | LC 0-31.0/06 |
| 1.3. Number of poles: | 17 |
| 1.4. Operating temperature range: | -40°C to +85°C |
| 1.5. Storage temperature range: | -55°C to +85°C |

2. Electric values

2.1. Pass band

2.1.1. Pass band range: DC f 31.0 MHz

2.1.2. Cutoff frequency (3 dB): 31.0 MHz

2.1.3. Insertion loss

DC.....24 MHz:	< 1.0 dB
24 MHz.....29 MHz:	< 2.0 dB
29 MHz.....31 MHz:	< 3.0 dB

2.1.4. Ripple in pass band: < 1.0 dB (peak to peak)

2.2. Stop band

2.2.1. Stop band attenuation

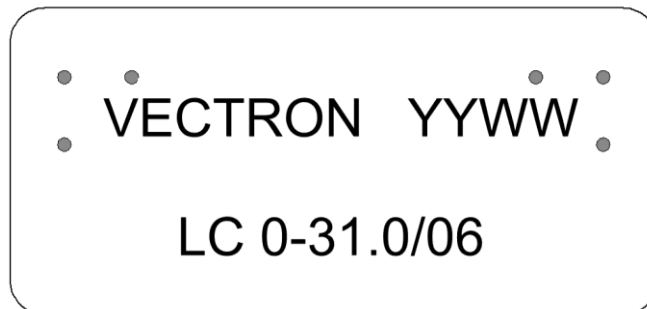
36 MHz.....100 MHz > 60 dB
Guaranteed attenuation: > 60 dB

2.3. Terminating impedance (input and output): 50 Ω // 0 pF

2.4. Maximum input power level: +20 dBm

3. Marking:

Top view



4. Environment conditions: Vectron MIL standard

5. Packing (maximum 25 pcs. / box)

Edited by: _____ date: _____ name: _____