

PLEASE CHECK WWW.MOLEX.COM FOR LATEST PART INFORMATION

Part Number: [0010011124](#)
Status: **Active**
Overview: [kk](#)
Description: 5.08mm (.200") Pitch KK® Crimp Terminal Housing, 12 Circuits

Documents:

[3D Model](#) [Product Specification PS-99020-0087 \(PDF\)](#)
[Drawing \(PDF\)](#) [RoHS Certificate of Compliance \(PDF\)](#)

Agency Certification

CSA LR19980
 UL E29179

General

Product Family Crimp Housings
 Series [3001](#)
 Overview [kk](#)
 Product Name KK®

Physical

Circuits (maximum) 12
 Color - Resin Natural
 Flammability 94V-2
 Gender Female
 Glow-Wire Compliant No
 Material - Resin Nylon
 Number of Rows 1
 Packaging Type Bag
 Panel Mount No
 Pitch - Mating Interface (in) 0.200 In
 Pitch - Mating Interface (mm) 5.08 mm
 Temperature Range - Operating -40°C to +105°C

Solder Process Data

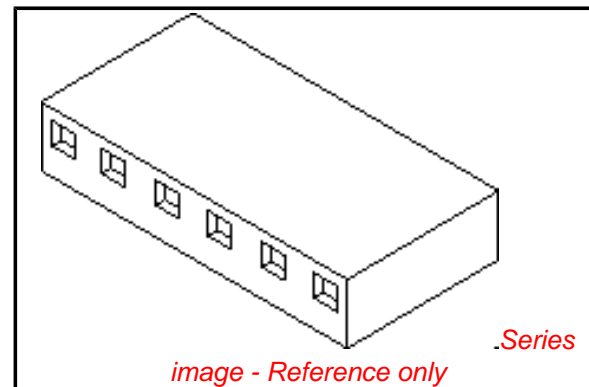
Lead-free Process Capability Wave Capable (TH only)

Material Info

Old Part Number 3001-12

Reference - Drawing Numbers

Product Specification PS-99020-0087
 Sales Drawing SDE-3001-N*



EU RoHS

ELV and RoHS Compliant
REACH SVHC
 Not Reviewed
Halogen-Free Status

China RoHS



Halogen-Free

Need more information on product environmental compliance?

Email productcompliance@molex.com
 For a multiple part number RoHS Certificate of Compliance, [click here](#)

Please visit the [Contact Us](#) section for any non-product compliance questions.

Search Parts in this Series

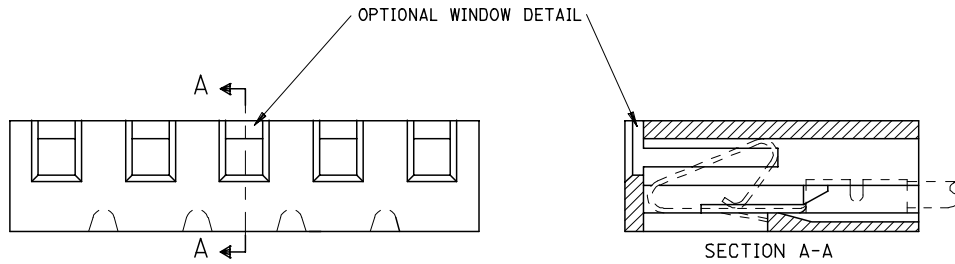
[3001Series](#)

Mates With

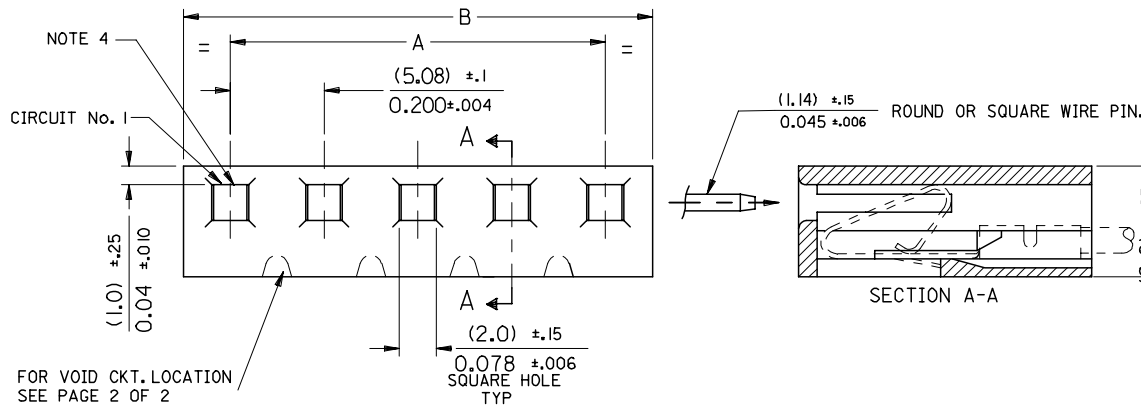
[3061](#) , [3003](#) , [3008](#)

Use With

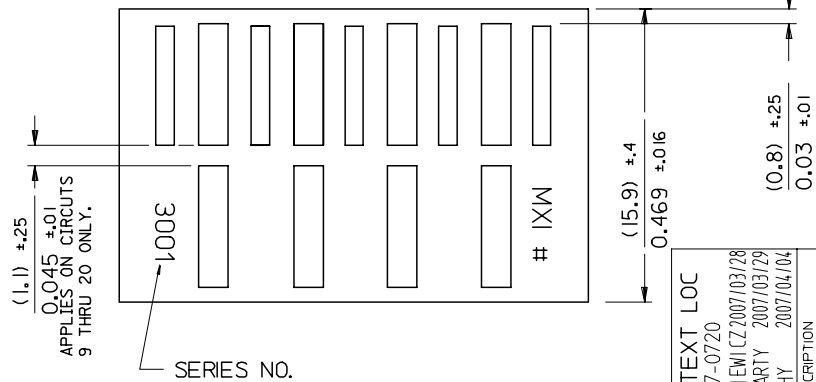
[2478](#) Crimp Terminals for 18-24 AWG, [2578](#) Crimp Terminals for 22-26 AWG, [2878](#)



NOTE :
 1. DIMENSIONS SHOWN MILLIMETERS INCHES
 2. FOR OTHER PRODUCT SPEC'S. SEE PSX 10-39.
 3. THIS HOUSING USES KK TERM. No's. 2478, 2578 & 28



FOR VOID CKT. LOCATION SEE PAGE 2 OF 2



MAT'L: NYLON

CENTER RIB ONLY

10-01-1204	E-3001-20	3.800 ±.012	4.000 ^{+0.006} _{-0.016}	96.52 ±0.3	101.60 ^{+0.3} _{-0.4}
-1194	-19	3.600 ±.012	3.800 ^{+0.006} _{-0.016}	91.44 ±0.3	96.52 ^{+0.3} _{-0.4}
-1184	-18	3.400 ±.012	3.600 ^{+0.006} _{-0.016}	86.36 ±0.3	91.44 ^{+0.3} _{-0.4}
-1174	-17	3.200 ±.012	3.400 ^{+0.006} _{-0.016}	81.28 ±0.3	86.36 ^{+0.3} _{-0.4}
-1164	-16	3.000 ±.010	3.200 ^{+0.006} _{-0.016}	76.20 ±0.25	81.28 ^{+0.3} _{-0.4}
-1154	-15	2.800 ±.010	3.000 ^{+0.006} _{-0.016}	71.12 ±0.25	76.20 ^{+0.3} _{-0.4}
-1144	-14	2.600 ±.010	2.800 ^{+0.006} _{-0.016}	66.04 ±0.25	71.12 ^{+0.3} _{-0.4}
-1134	-13	2.400 ±.010	2.600 ^{+0.006} _{-0.016}	60.96 ±0.25	66.04 ^{+0.3} _{-0.4}
-1124	-12	2.200 ±.010	2.400 ^{+0.006} _{-0.016}	55.88 ±0.25	60.96 ^{+0.3} _{-0.4}
-1114	-11	2.000 ±.008	2.200 ^{+0.006} _{-0.012}	50.80 ±0.20	55.88 ^{+0.3} _{-0.4}
-1104	-10	1.800 ±.008	2.000 ^{+0.006} _{-0.008}	45.72 ±0.20	50.80 ^{+0.3} _{-0.4}
-1094	-9	1.600 ±.008	1.800 ^{+0.006} _{-0.008}	40.64 ±0.20	45.72 ^{+0.3} _{-0.4}
-1084	-8	1.400 ±.008	1.600 ^{+0.006} _{-0.008}	35.56 ±0.20	40.64 ^{+0.3} _{-0.4}
-1074	-7	1.200 ±.008	1.400 ^{+0.006} _{-0.008}	30.48 ±0.20	35.56 ^{+0.3} _{-0.4}
-1064	-6	1.000 ±.004	1.200 ^{+0.006} _{-0.008}	25.40 ±0.10	30.48 ^{+0.3} _{-0.4}
-1054	-5	.800 ±.004	1.000 ^{+0.006} _{-0.006}	20.32 ±0.10	25.40 ^{+0.3} _{-0.4}
-1044	-4	.600 ±.004	.800 ^{+0.006} _{-0.006}	15.24 ±0.10	20.32 ^{+0.3} _{-0.4}
-1034	-3	.400 ±.004	.600 ^{+0.006} _{-0.006}	10.16 ±0.10	15.24 ^{+0.3} _{-0.4}
-1024	-2	.200 ±.004	.400 ^{+0.006} _{-0.006}	5.08 ±0.10	10.16 ^{+0.3} _{-0.4}
10-01-1014	E-3001-1		.200 ^{+0.006} _{-0.006}		5.08 ^{+0.3} _{-0.4}
PART No.	ENG. No.	ENGLISH		METRIC	
		A	B	A	B

CORRECT TEXT LOC
 EC NO: E2007-0720
 DRWN: DWASZKI EMI CZ 2007/03/28
 CHKD: D. MOR ARTY 2007/03/29
 APPR: DENNEHY 2007/04/04

QUALITY SYMBOLS
 ▽=0
 ▽=0

GENERAL TOLERANCES (UNLESS SPECIFIED)

	mm	INCH
4 PLACES	±.005	±.0002
3 PLACES	±.005	±.010
2 PLACES	±0.25	±.014
1 PLACE	±0.35	±.014

ANGULAR ±1/2°

DIMENSION STYLE
MM/IN

SCALE
7:1

DESIGN UNITS
METRIC

THIRD ANGLE PROJECTION

DRAWN BY P. MOORE **DATE** 1998/09/15
CHECKED BY MGOONEY **DATE** 1999/03/12
APPROVED BY MWILHITE **DATE** 1999/03/12

TITLE 5.08MM KK CRP TERM HSG

MATERIAL NO. SEE CHART **DOCUMENT NO.** SDE-3001-N-* **SHEET NO.** 1 OF 1

DRAFT WHERE APPLICABLE MUST REMAIN WITHIN DIMENSIONS

SIZE A3

THIS DRAWING CONTAINS INFORMATION THAT IS PROPRIETARY TO MOLEX INCORPORATED AND SHOULD NOT BE USED WITHOUT WRITTEN PERMISSION

PART NO. SEE CHART
DWG. NO. SDE-3001-N*

FOR MANUFACTURE IN SINGAPORE ONLY

FOR DIMENSIONS SEE SHEET No.1

11	97-00-0919	E-3001-12-11	12
2	NOT TOOLED	E-3001-7-2	7
3	I 10-01-1080	-8-3	8
5	I -3085	-8-5	8
4	I -3044	-4-4	4
3	I -1030	-3-3	3
2	-1049	-4-2	4
2	-1109	-10-2	10
2	-1099	-9-2	9
5	10-01-1069	E-3001-6-5	6
VOID CKT. LOCATION	PART No.	ENG. No.	NO OF CKTS.

REDRAWN ON CAD EC NO. E90109 DRWN: P.MOORE 98/09/19 CHK: / / / / APPR: / / / / K	DESCRIPTION	QUALITY SYMBOLS	GENERAL TOLERANCES: (UNLESS SPECIFIED)	SCALE :	DESIGN UNITS <input type="checkbox"/> mm <input type="checkbox"/> INCH	<input checked="" type="checkbox"/> THIRD ANGLE <input type="checkbox"/> PROJECTION	DIMENSIONS: <input checked="" type="checkbox"/> mm <input type="checkbox"/> INCH <input type="checkbox"/> mm ONLY	SHT	REV
	REV	MAJOR = CRITICAL = C =	mm INCH	mm INCH	mm INCH	mm INCH	mm INCH	mm INCH	mm INCH
	4 PLACES	±0. ±.	±0. ±.	±0. ±.	±0. ±.	±0. ±.	±0. ±.	±0. ±.	±0. ±.
	3 PLACES	±0. ±.	±0. ±.	±0. ±.	±0. ±.	±0. ±.	±0. ±.	±0. ±.	±0. ±.
2 PLACES	±0. ±.	±0. ±.	±0. ±.	±0. ±.	±0. ±.	±0. ±.	±0. ±.	±0. ±.	
1 PLACE	±0. ±.	±0. ±.	±0. ±.	±0. ±.	±0. ±.	±0. ±.	±0. ±.	±0. ±.	
			ANGULAR: ± 1/2 °	DRAWN BY & DATE P.MOORE 98/09/19		TITLE: HOUSING, CONNECTOR, KK (5.08)/.200 CRIMP STYLE TERM.			
			DRAFT WHERE APPLICABLE MUST REMAIN WITHIN DIMENSIONS	CHECKED BY & DATE MGOONEY 12/03/99		MOLEX INCORPORATED			
				APPROVED BY & DATE MWILHITE 12/03/99		MATERIAL NO. DRAWING NO. SHEET NO. SEE CHART SDE-3001-N-* 2 OF			
				CAD FILENAME PM19.DGN		THIS DRAWING CONTAINS INFORMATION THAT IS PROPRIETARY TO MOLEX INCORPORATED AND SHOULD NOT BE USED WITHOUT WRITTEN PERMISSION.			