



## PRODUCT SPECIFICATION

*Part Number*

PT644857B-TLMWD-EMC10

CUSTOMER	
CUSTOMER PART NUMBER	
DESCRIPTION	5.7" TFT LCD, Medium Bright, CTP
APPROVED BY	
DATE	

**P-TEC****MODEL NO.**

PT644857B-TLMWD-EMC10

SPEC ONLY

**PAGE**

2

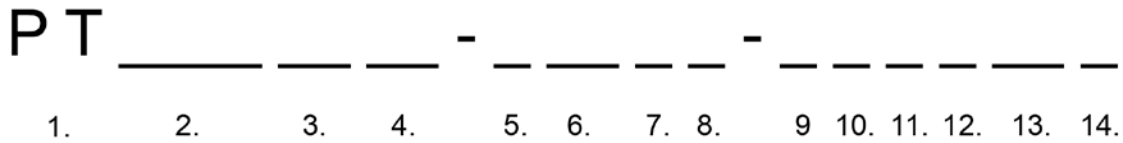
## 1. Table of Contents

<b>No.</b>	<b>Contents</b>	<b>Page</b>
1	Table of Contents	2
2	Record of Revisions	3
3	Module Numbering System	4
4	Application	5
5	Features	5
6	General Specifications	5
7	Absolute Maximum Ratings	6
8	Electrical Characteristics	7
9	Block Diagram	9
10	Input / Output Terminals Pin Assignment	10
11	Interface Timing	15
12	Optical Characteristics	25
13	Reliability Test	28
14	Packaging	29
15	Precautions	30
16	Outline Drawing	32
17	Definition of Labels	33
18	Incoming Inspection Standards	35





### 3. Module Numbering System



#### 1. P-TEC TFT

#### 2. LENGTH x WIDTH PIXELS

If third character is a zero, it is removed to shorten part number. Example: 240 x 320 = PT3224

#### 3. DIAGONAL DIMENSIONS

Example: 3.5" display = 35 in part number

#### 4. PRODUCT VERSION

Series assigned by P-tec

#### 5. LCD MODE

T: TN  
I: IPS  
V: VA

#### 6. POLARIZER

LM: Transmissive  
LF: Transflective

#### 7. BACKLIGHT COLOR

No Backlight: Left Blank  
W: White  
B: Blue/Green  
S: Yellow/Green

#### 8. VIEWING DIRECTION

D: 6 o'clock  
U: 12 o'clock  
F: Full Viewing Angle

#### 9. A ~ Z CODE

Assigned by P-tec

#### 11. TEMPERATURE RANGE

Normal: Left Blank  
Wide: X

#### 12. LUMINANCE

Blank: Normal (<300 nit)  
M: Middle (>= 300 nit)  
H: High (> 600 nit)

#### 13. TOUCH PANEL OPTION

No TP: Left Blank  
C: Capacitive TP  
R: Resistive TP

#### 14. SPECIAL CHARACTERS

Customer special requirements



#### 4. Application

This specification is applied to the 5.7 inch VGA supported TFT-LCD module With projected capacitive touch (PCT) and can display true 262,144 colors(6 bit/ color). The module is designed for OA, Car TV application and other electronic products which require flat panel display of digital signal interface. This module is composed of a 5.7" TFT-LCD panel, a driver circuit and backlight unit and used as the input devices for general electric appliances via both finger and Capacitive stylus pen.

#### 5. Features

- VGA (640×480 pixels) resolution.
- Digital 18 bit parallel RGB.
- Dot inversion mode with stripe type.
- LED drive circuit is built in this module to provide PWM Dimmer function
- Projected Capacitive Touch
  - I<sup>2</sup>C Interface
  - Multi Touch (Ten points)

#### 6. General Specifications

Item	Specifications	Unit
Screen Size	5.7 (Diagonal)	inch
Display Format	640RGB(H)×480(V)	dot
Active Area	115.2(H)×86.4(V)	mm
Dot Size	0.060(H)×0.180(V)	mm
Pixel Configuration	RGB Vertical Stripe	-
Display Mode	TN Type Transmissive Mode Normally White	-
Surface Treatment	Clear(7H)	-
Viewing Direction	6 O'clock (The Gray Inversion will appear at this direction)	-
Outline Dimension	144.0(H)×104.6(W)×14.6(D)	mm
Weight	194	g
RoHS Compliance	P-tec certifies this product to be in compliance with European Union Directive 2011/65/EU on the restriction of certain hazardous substances in electrical and electronic equipment	-



## 7. Absolute Maximum Ratings

### 7.1 Absolute Ratings of Environment

Item	Symbol	Value		Unit	Note
		Min.	Max.		
Storage Temperature	T <sub>ST</sub>	-30	+80	°C	(1)(2)
Operating Ambient Temperature	T <sub>OP</sub>	-20	+70	°C	(1)(2)

Note1: Background color changes slightly depending on ambient temperature.

This phenomenon is reversible.

Note2: Please refer to item of RELIABILITY.

### 7.2 Electrical Absolute Ratings

#### 7.2.1 TFT-LCD Module

(Ta=25±2°C, GND=VSS=0V)

Item	Symbol	Value		Unit	Note
		Min.	Max.		
Digital Power Supply Voltage	VCC	-0.3	4.3	V	-

#### 7.2.2 LED Driver Absolute Maximum Ratings

(Ta=25±2°C)

Item	Symbol	Value		Unit	Note
		Min.	Max.		
LED Driver Supply Voltage	VLED	-0.3	17	V	(1)
LED Driver PWM	PWM	-0.3	6	V	(1)

Note (1) Permanent damage to the device may occur if maximum values are exceeded or reverse voltage is loaded.

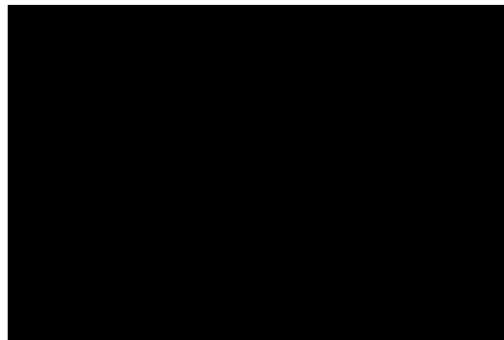
**8. Electrical Characteristics****8.1 TFT-LCD Module**

(Ta=25±2°C)

Item	Symbol	Value			Unit	Note
		Min.	Typ.	Max.		
Power Supply Voltage	VCC	3.0	3.3	3.6	V	-
Input High Threshold Voltage	VIH	0.7VCC	-	VCC	V	-
Input Low Threshold Voltage	VIL	0	-	0.3VCC	V	-
Current dissipation	ICC	-	140	196	mA	-
Power Consumption	P <sub>L</sub>	-	0.462	0.504	W	(1)
Frame Frequency	F <sub>V</sub>	-	60	-	Hz	-
Dot Clock	DCLK	-	25.175	-	MHz	-

Note (1) The specified power consumption is under the conditions at VCC=3.3V, F<sub>V</sub>=60Hz, whereas a power dissipation check pattern below is displayed.

Black Pattern / 0 Gray



Active Area

**8.2 LED Driver Unit**

(Ta=25±2°C)

Item	Symbol	Value			Unit	Note
		Min.	Typ.	Max.		
Voltage of LED Driver Unit	V <sub>LED(DU)</sub>	11.2	12.0	12.6	V	-
Current of LED Driver Unit	I <sub>LED(DU)</sub>	-	180	252	mA	B/L=200mA
Current of LED Driver Unit	I <sub>LED(DU)</sub>	-	130	182	mA	B/L=150mA
Current of LED Driver Unit	I <sub>LED(DU)</sub>	-	80	112	mA	B/L=100mA
Dimmer signal Low voltage	VPWML	-	-	0.2	V	-
Dimmer signal High voltage	VPWMH	4	5.0	5.5	V	-
Dimmer frequency	fPWM	-	120	-	Hz	-
PWM Pulse width	TPWMH	10			us	-
LED Life Time(25°C)	-	40000	50000	-	hr	-



### 8.3 Projected Capacitive Touch

Item	Symbol	Value			Unit	Note
		Min.	Typ.	Max.		
Operating Voltage	VDD	3.0	3.3	3.6	V	-
Power Supply Current	IDD	-	17.5	24.5	mA	(1)
Input High Threshold Voltage	V <sub>IH</sub>	0.7VDD	-	VDD	V	-
Input Low Threshold Voltage	V <sub>IL</sub>	-0.3	-	0.3VDD	V	-
Output High Threshold Voltage	V <sub>OH</sub>	0.7VDD	-	-	V	-
Output Low Threshold Voltage	V <sub>OL</sub>	-	-	0.3VDD	V	-
Power Consumption	P <sub>L</sub>	-	57.75	80.85	mW	@3.3V
Report Rate	RR	-	60	-	Hz	-
Interface		I <sup>2</sup> C				-
Function		Multi Touch				-

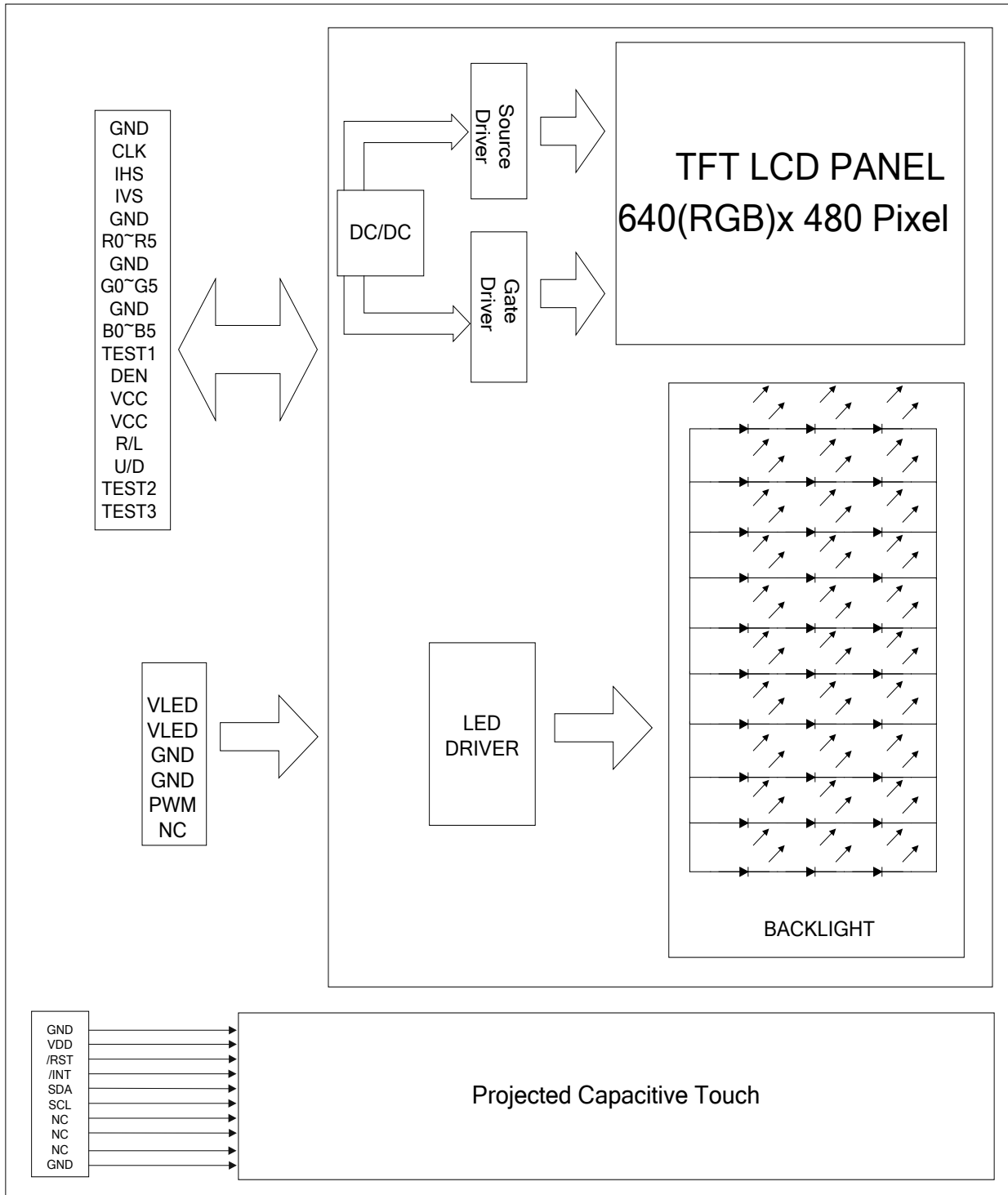
Note (1) This test condition is touched with 10 points.





### 9. Block Diagram

#### 9.1 TFT-LCD Module with Backlight Unit





## 10. Input / Output Terminals Pin Assignment

### 10.1 TFT-LCD Module

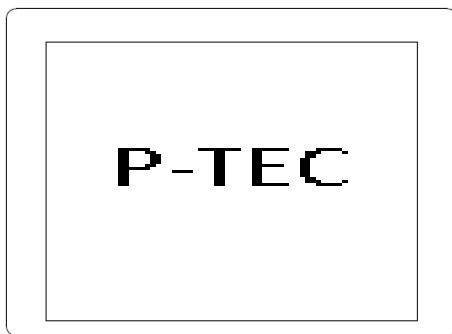
Connector: CVILUX CF25331D0R0-05

Pin No.	Symbol	I/O	Description
1	GND	I	Ground
2	CLK	I	Clock signal
3	IHS	I	Horizontal synchronous signal
4	IVS	I	Vertical synchronous signal
5	GND	I	Ground
6	R0	I	RED data (LSB)
7	R1	I	RED data
8	R2	I	RED data
9	R3	I	RED data
10	R4	I	RED data
11	R5	I	RED data(MSB)
12	GND	I	Ground
13	G0	I	GREEN data(LSB)
14	G1	I	GREEN data
15	G2	I	GREEN data
16	G3	I	GREEN data
17	G4	I	GREEN data
18	G5	I	GREEN data(MSB)
19	GND	I	Ground
20	B0	I	Blue data(LSB)
21	B1	I	Blue data
22	B2	I	Blue data
23	B3	I	Blue data
24	B4	I	Blue data
25	B5	I	Blue data(MSB)
26	TEST1	I	TEST1(Please be sure to connect 26pin with ground)
27	DEN	I	Input data enable control
28	VCC	I	+3.3V power supply
29	VCC	I	+3.3V power supply

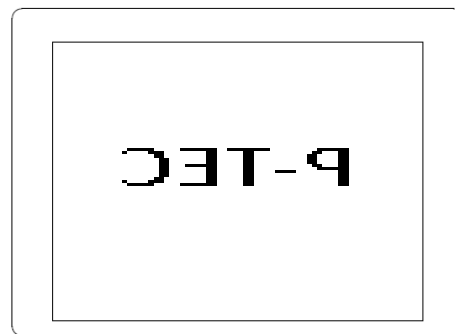


Pin No.	Symbol	I/O	Description
30	R/L	I	Selection signal for horizontal scanning direction. Note (1)
31	U/D	I	Selection signal for vertical scanning direction. Note (1)
32	TEST2	I	TEST2(to be open, or connected to either GND or Vcc)
33	TEST3	I	TEST3(Please be sure to connect 33pin with ground)

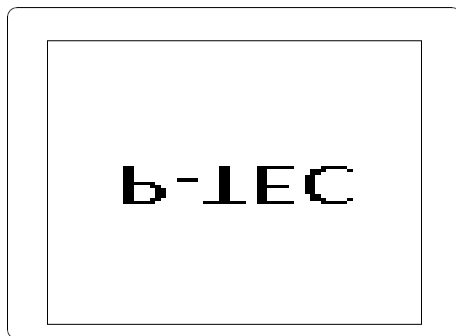
Note (1)



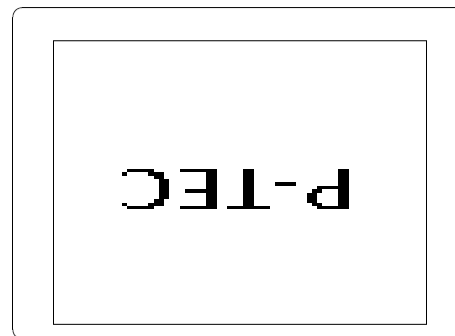
R/L=L, U/D=H



R/L=H, U/D=H



R/L=L, U/D=L



R/L=H, U/D=L

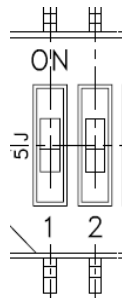


## 10.2 Backlight Unit

Connector: CVILUX CI1106M1HR0-LF

Pin No.	Symbol	Description
1	VLED	LED drive circuit power supply (12V)
2	VLED	LED drive circuit power supply (12V)
3	GND	Ground
4	GND	Ground
5	PWM	PWM Dimmer
6	NC	NO CONNECTION

JUMP: HCH HDS502-E



PIN 1	PIN2	Result
ON	ON	200mA
ON	OFF	150mA
OFF	ON	150mA
OFF	OFF	100mA

## 10.3 Projected Capacitive Touch

Connector: CVILUX CF25101D0R0-05

Pin No.	Symbol	I/O	Description
1	GND	I	System ground.
2	VDD	I	+3.3V power supply.
3	/RST	I	External reset signal, active low.
4	/INT	O	Interrupt signal, active low, asserted to request Host start a new transaction.
5	SDA	I/O	I <sup>2</sup> C data signal.
6	SCL	I	I <sup>2</sup> C clock signal.
7	NC	-	Not Connection
8	NC	-	Not Connection
9	NC	-	Not Connection
10	GND	I	System ground.



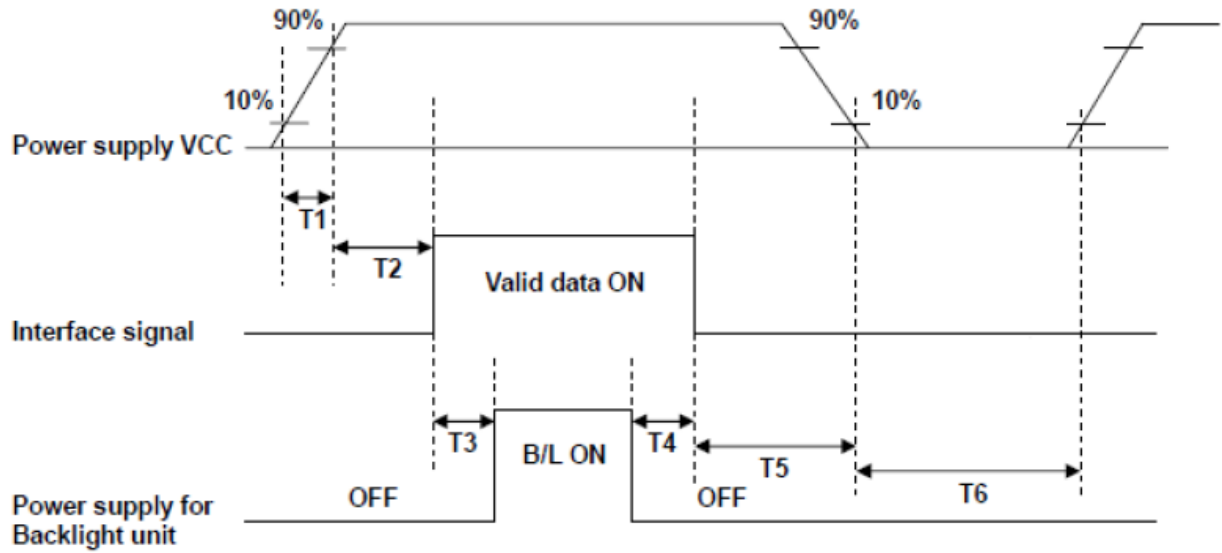
### 10.4 Color Data Input Assignment

The brightness of each primary color(red, green and blue) is based on the 6 bit gray scale data input for the color. The higher the binary input, the brighter the color. The table provides the assignment of color versus data input.

Color		Data Signal																	
		Red						Green						Blue					
		D05	D04	D03	D02	D01	D00	D15	D14	D13	D12	D11	D10	D25	D24	D23	D22	D21	D20
Basic Colors	Black	0	0	0	0	0	0	0	0	0	0	0	0	0	0	0	0	0	0
	Red	1	1	1	1	1	1	0	0	0	0	0	0	0	0	0	0	0	0
	Green	0	0	0	0	0	0	1	1	1	1	1	1	0	0	0	0	0	0
	Blue	0	0	0	0	0	0	0	0	0	0	0	0	1	1	1	1	1	1
	Cyan	0	0	0	0	0	0	1	1	1	1	1	1	1	1	1	1	1	1
	Magenta	1	1	1	1	1	1	0	0	0	0	0	0	0	1	1	1	1	1
	Yellow	1	1	1	1	1	1	1	1	1	1	1	1	0	0	0	0	0	0
	White	1	1	1	1	1	1	1	1	1	1	1	1	1	1	1	1	1	1
Gray Scale Of RED	Red(0) / Dark	0	0	0	0	0	0	0	0	0	0	0	0	0	0	0	0	0	0
	Red(1)	0	0	0	0	0	1	0	0	0	0	0	0	0	0	0	0	0	0
	Red(2)	0	0	0	0	1	0	0	0	0	0	0	0	0	0	0	0	0	0
	:	:	:	:	:	:	:	:	:	:	:	:	:	:	:	:	:	:	:
	:	:	:	:	:	:	:	:	:	:	:	:	:	:	:	:	:	:	:
	Red(61)	1	1	1	1	0	1	0	0	0	0	0	0	0	0	0	0	0	0
	Red(62)	1	1	1	1	1	0	0	0	0	0	0	0	0	0	0	0	0	0
	Red(63)	1	1	1	1	1	1	0	0	0	0	0	0	0	0	0	0	0	0
Gray Scale Of Green	Green(0) / Dark	0	0	0	0	0	0	0	0	0	0	0	0	0	0	0	0	0	0
	Green(1)	0	0	0	0	0	0	0	0	0	0	0	1	0	0	0	0	0	0
	Green(2)	0	0	0	0	0	0	0	0	0	0	1	0	0	0	0	0	0	0
	:	:	:	:	:	:	:	:	:	:	:	:	:	:	:	:	:	:	:
	:	:	:	:	:	:	:	:	:	:	:	:	:	:	:	:	:	:	:
	Green(61)	0	0	0	0	0	0	1	1	1	1	0	1	0	0	0	0	0	0
	Green(62)	0	0	0	0	0	0	1	1	1	1	1	0	0	0	0	0	0	0
	Green(63)	0	0	0	0	0	0	1	1	1	1	1	1	0	0	0	0	0	0
Gray Scale Of Blue	Blue(0) / Dark	0	0	0	0	0	0	0	0	0	0	0	0	0	0	0	0	0	0
	Blue(1)	0	0	0	0	0	0	0	0	0	0	0	0	0	0	0	0	0	1
	Blue(2)	0	0	0	0	0	0	0	0	0	0	0	0	0	0	0	0	1	0
	:	:	:	:	:	:	:	:	:	:	:	:	:	:	:	:	:	:	:
	:	:	:	:	:	:	:	:	:	:	:	:	:	:	:	:	:	:	:
	Blue(61)	0	0	0	0	0	0	0	0	0	0	0	0	1	1	1	1	0	1
	Blue(62)	0	0	0	0	0	0	0	0	0	0	0	0	1	1	1	1	1	0
	Blue(63)	0	0	0	0	0	0	0	0	0	0	0	0	1	1	1	1	1	1



### 10.5 Power ON/OFF Sequence



**POWER SEQUENCE TABLE**

Parameter	Value			Units
	Min.	Typ	Max.	
T1	0.5	-	10	ms
T2	0	-	50	ms
T3	500	-	-	ms
T4	500	-	-	ms
T5	0	-	50	ms
T6	1000	-	-	ms

**11. Interface Timing****11.1 Input Signal Characteristics**

PARAMETER	Symbol	Min.	Typ.	Max.	Unit
HS setup time	$T_{hst}$	10	-	-	ns
HS hold time	$T_{hhd}$	10	-	-	ns
VS setup time	$T_{vst}$	10	-	-	ns
VS hold time	$T_{vhd}$	10	-	-	ns
Data setup time	$T_{dsu}$	10	-	-	ns
Data hold time	$T_{dhd}$	10	-	-	ns
DEN setup time	$T_{esu}$	10	-	-	ns
VS falling to HS falling time on odd field @ RGB mode	$T_{HV\_O}$	-4	0	+4	$T_{CPH}$
VS falling to HS falling time on even field @ RGB mode	$T_{HV\_E}$	0.4	0.5	0.6	$T_H$

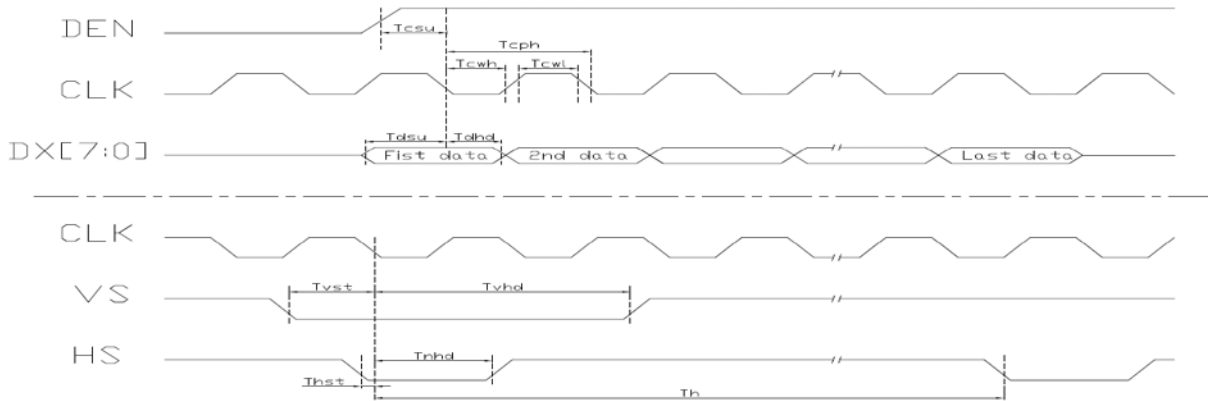
PARAMETER	Symbol	Spec.			Unit
		Min.	Typ.	Max.	
CLK frequency	$F_{CPH}$	22.66	25.175	27.69	MHz
CLK period	$T_{CPH}$	36.11	39.7	44.13	ns
CLK pulse duty	$T_{CWH}$	40	50	60	%
HS period	$T_H$	750	800	850	$T_{CPH}$
HS pulse width	$T_{WH}$	5	30	-	$T_{CPH}$
HS-first horizontal data time	$T_{HS}$	112	144	175	$T_{CPH}$
Horizontal active data area	$T_{HA}$	-	640	-	$T_{CPH}$
VS pulse width	$T_{WV}$	1	3	5	$T_H$
First Line Data input time	$T_{STV}$	-	35	-	$T_H$
VS period	$T_V$	515	525	535	$T_H$

Note: When SYNC mode is used, 1st data start from 144th CLK after HS falling (when  $STHD[5:0]=00000$ )

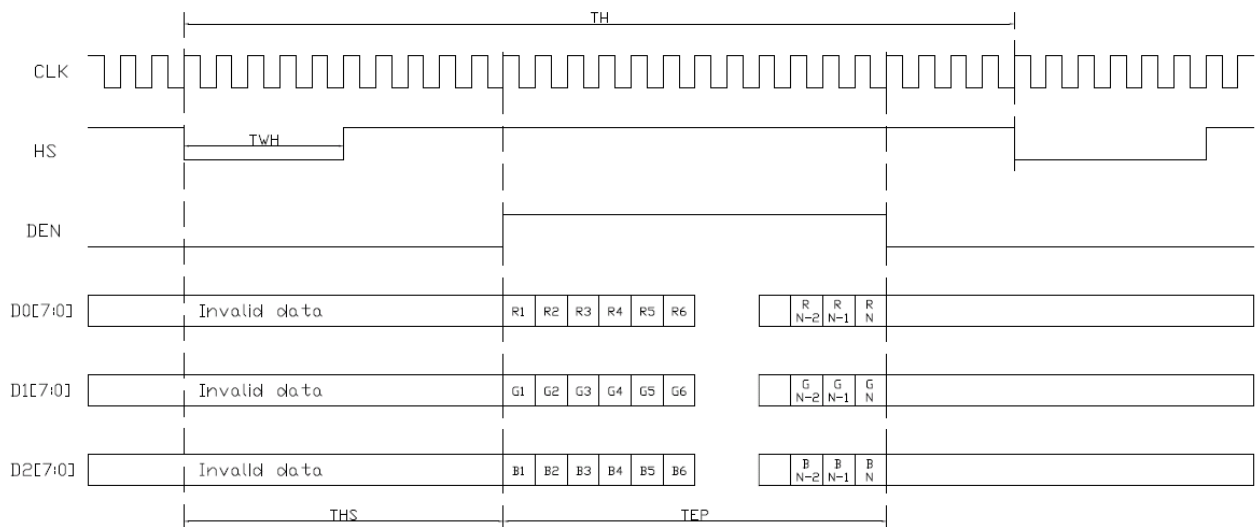


## 11.2 Waveform

### 11.2.1 Clock and Data input waveforms



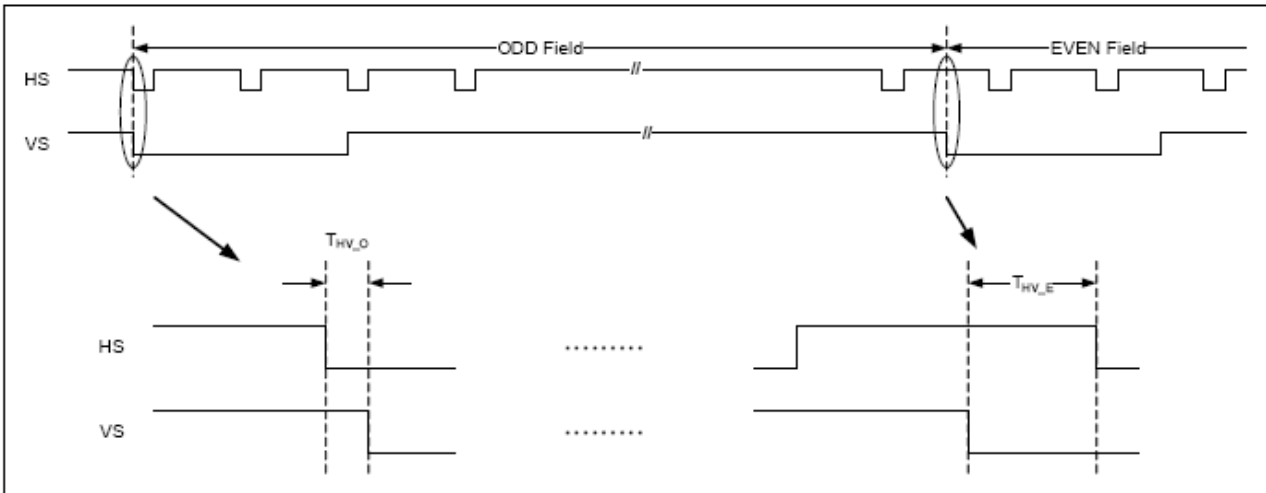
### 11.2.2 Data input format for RGB Mode







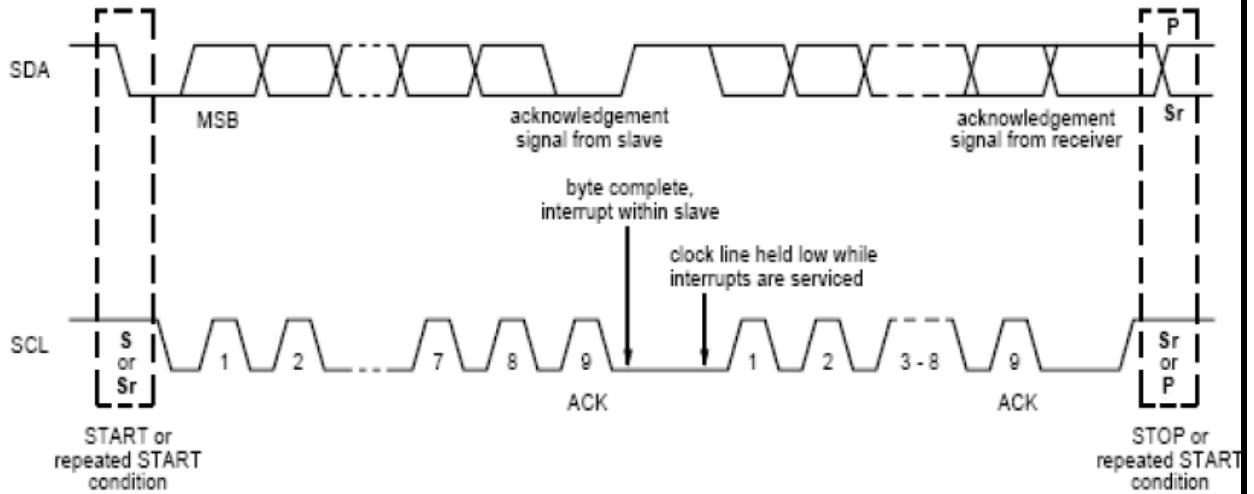
### 11.2.3 The HS & VS timing of the ODD/EVEN field.





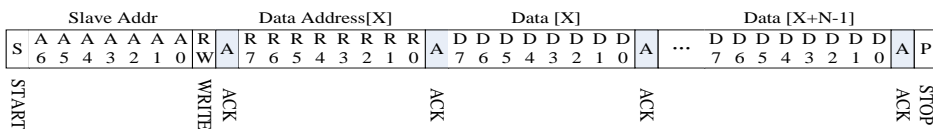
### 11.3 Timing Requirement of Projected Capacitive Touch

#### 11.3.1 I2C Data Transfer Format

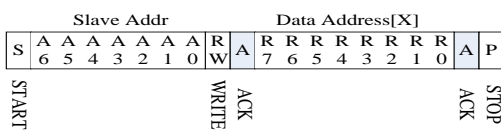


Mnemonics	Description
S	I <sup>2</sup> C Start or I <sup>2</sup> C Restart
A[6:0]	Slave Address = 7'b0111000
W	1'b0: Write
R	1'b1: Read
C	ACK
P	STOP: the indicate the end of a packet (if this bit is missing, S will indicate the end of the current packet and the beginning of the next packet)

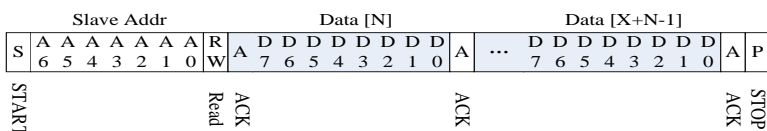
#### Write N bytes to I2C slave



#### Set Data Address



#### Read X bytes from I<sup>2</sup>C Slave



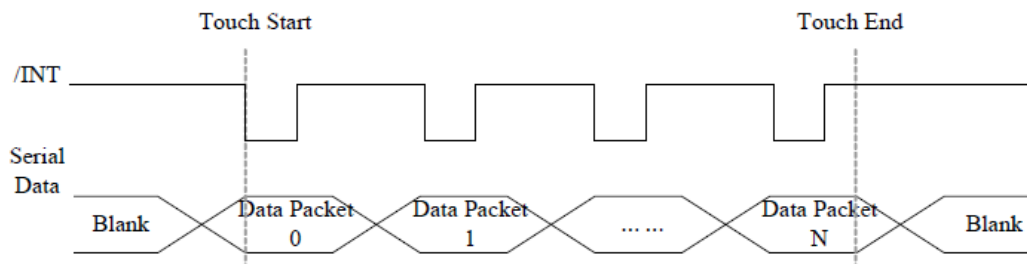


### 11.3.2 I2C Timing Characteristics

(Ta=25±2°C)

Parameter	Min	Max	Unit
SCL frequency	-	400	kHz
Bus free time between a STOP and START condition	4.7	-	μs
Hold time (repeated) START condition	4.0	-	μs
Data setup time	250	-	ns
Setup time for a repeated START condition	4.7	-	μs
Setup time for STOP condition	4.0	-	μs

### 11.3.3 Interrupt Trigger Mode



### 11.3.4 I2C Operating Mode Register Map

Address	Name	Bit 7	Bit 6	Bit 5	Bit 4	Bit 3	Bit 2	Bit 1	Bit 0	Host Access
Op,00h	DEVICE_MODE		Device Mode[2:0]							RW
Op,01h	Reserved									R
Op,02h	TD_STATUS					Number of touch points[3:0]				R
Op,03h	TOUCH1_YH	1 <sup>st</sup> Event Flag			1 <sup>st</sup> Touch Y Position[11:8]					R
Op,04h	TOUCH1_YL	1 <sup>st</sup> Touch Y Position[7:0]								R
Op,05h	TOUCH1_XH	1 <sup>st</sup> Touch ID[3:0]			1 <sup>st</sup> Touch X Position[11:8]					R
Op,06h	TOUCH1_XL	1 <sup>st</sup> Touch X Position[7:0]								R



Op,07h	Reserved			R
Op,08h	Reserved			R
Op,09h	TOUCH2_YH	2 <sup>nd</sup> Event Flag	2 <sup>nd</sup> Touch Y Position[11:8]	R
Op,0Ah	TOUCH2_YL	2 <sup>nd</sup> touch Y Position[7:0]		R
Op,0Bh	TOUCH2_XH	2 <sup>nd</sup> Touch ID[3:0]	2 <sup>nd</sup> Touch X Position[11:8]	R
Op,0Ch	TOUCH2_XL	2 <sup>nd</sup> Touch X Position[7:0]		R
Op,0Dh	Reserved			R
Op,0Eh	Reserved			R
Op,0Fh	TOUCH3_YH	3 <sup>rd</sup> Event Flag	3 <sup>rd</sup> Touch Y Position[11:8]	R
Op,10h	TOUCH3_YL	3 <sup>rd</sup> Touch Y Position[7:0]		R
Op,11h	TOUCH3_XH	3 <sup>rd</sup> Touch ID[3:0]	3 <sup>rd</sup> Touch X Position[11:8]	R
Op,12h	TOUCH3_XL	3 <sup>rd</sup> Touch X Position[7:0]		R
Op,13h	Reserved			R
Op,14h	Reserved			R
Op,15h	TOUCH4_YH	4 <sup>th</sup> Event Flag	4 <sup>th</sup> Touch Y Position[11:8]	R
Op,16h	TOUCH4_YL	4 <sup>th</sup> Touch Y Position[7:0]		R
Op,17h	TOUCH4_XH	4 <sup>th</sup> Touch ID[3:0]	4 <sup>th</sup> Touch X Position[11:8]	R
Op,18h	TOUCH4_XL	4 <sup>th</sup> Touch X Position[7:0]		R
Op,19h	Reserved			R
Op,1Ah	Reserved			R
Op,1Bh	TOUCH5_YH	5 <sup>th</sup> Event Flag	5 <sup>th</sup> Touch Y Position[11:8]	R
Op,1Ch	TOUCH5_YL	5 <sup>th</sup> Touch Y Position[7:0]		R
Op,1Dh	TOUCH5_XH	5 <sup>th</sup> Touch ID[3:0]	5 <sup>th</sup> Touch X Position[11:8]	R
Op,1Eh	TOUCH5_XL	5 <sup>th</sup> Touch X Position[7:0]		R
Op,1Fh	Reserved			R
Op,20h	Reserved			R
Op,21h	TOUCH6_YH	6 <sup>th</sup> Event Flag	6 <sup>th</sup> Touch Y Position[11:8]	R
Op,22h	TOUCH6_YL	6 <sup>th</sup> Touch Y Position[7:0]		R
Op,23h	TOUCH6_XH	6 <sup>th</sup> Touch ID[3:0]	6 <sup>th</sup> Touch	R



**P-TEC**

**MODEL NO.**

**PAGE**

PT644857B-TLMWD-EMC10

SPEC ONLY

21

			X Position[11:8]	
Op,24h	TOUCH6_XL	6 <sup>th</sup> Touch X Position[7:0]		R
Op,25h	Reserved			R
Op,26h	Reserved			R
Op,27h	TOUCH7_YH	7 <sup>th</sup> Event Flag	7 <sup>th</sup> Touch Y Position[11:8]	R
Op,28h	TOUCH7_YL	7 <sup>th</sup> Touch Y Position[7:0]		R
Op,29h	TOUCH7_XH	7 <sup>th</sup> Touch ID[3:0]	7 <sup>th</sup> Touch X Position[11:8]	R
Op,2Ah	TOUCH7_XL	7 <sup>th</sup> Touch X Position[7:0]		R
Op,2Bh	Reserved			R
Op,2Ch	Reserved			R
Op,2Dh	TOUCH8_YH	8 <sup>th</sup> Event Flag	8 <sup>th</sup> Touch Y Position[11:8]	R
Op,2Eh	TOUCH8_YL	8 <sup>th</sup> Touch Y Position[7:0]		R
Op,2Fh	TOUCH8_XH	8 <sup>th</sup> Touch ID[3:0]	8 <sup>th</sup> Touch X Position[11:8]	R
Op,30h	TOUCH8_XL	8 <sup>th</sup> Touch X Position[7:0]		R
Op,31h	Reserved			R
Op,32h	Reserved			R
Op,33h	TOUCH9_YH	9 <sup>th</sup> Event Flag	9 <sup>th</sup> Touch Y Position[11:8]	R
Op,34h	TOUCH9_YL	9 <sup>th</sup> Touch Y Position[7:0]		R
Op,35h	TOUCH9_XH	9 <sup>th</sup> Touch ID[3:0]	9 <sup>th</sup> Touch X Position[11:8]	R
Op,36h	TOUCH9_XL	9 <sup>th</sup> Touch X Position[7:0]		R
Op,37h	Reserved			R
Op,38h	Reserved			R
Op,39h	TOUCH10_YH	10 <sup>th</sup> Event Flag	10 <sup>th</sup> Touch Y Position[11:8]	R
Op,3Ah	TOUCH10_YL	10 <sup>th</sup> Touch Y Position[7:0]		R
Op,3Bh	TOUCH10_XH	10 <sup>th</sup> Touch ID[3:0]	10 <sup>th</sup> Touch X Position[11:8]	R
Op,3Ch	TOUCH10_XL	10 <sup>th</sup> Touch X Position[7:0]		R
Op,3Dh	Reserved			R
Op,3Eh	Reserved			R



### 11.3.5 DEVICE\_MODE

This register is the device mode register, configure it to determine the current mode of the chip.

Address	Bit Address	Register Name	Description
Op,00h	6:4	Device Mode [2:0]	000b Normal operating Mode 001b System Information Mode (Reserved) 100b Test Mode – read raw data (Reserved)

### 11.3.6 TD\_STATUS

This register is the Touch Data status register.

Address	Bit Address	Register Name	Description
Op,02h	3:0	Number of touch points[3:0]	How many points detected. 1-10 is valid.

### 11.3.7 TOUCHn\_YH (n:1-10)

This register describes MSB of the Y coordinate of the nth touch point and the corresponding event flag.

Address	Bit Address	Register Name	Description
Op,03h ~ Op,39h	7:6	Event Flag	00b: Put Down 01b: Put Up 10b: Contact 11b: No event
	5:4		Reserved
	3:0	Touch Y Position [11:8]	MSB of Touch Y Position in pixels

**11.3.8 TOUCHn\_YL (n:1-10)**

This register describes LSB of the Y coordinate of the nth touch point.

Address	Bit Address	Register Name	Description
Op,04h ~ Op,3Ah	7:0	Touch Y Position [7:0]	LSB of the Touch Y Position in pixels

**11.3.9 TOUCHn\_XH (n:1-10)**

This register describes MSB of the X coordinate of the nth touch point and corresponding touch ID.

Address	Bit Address	Register Name	Description
Op,05h ~ Op,3Bh	7:4  3:0	Touch ID[3:0]  Touch X Position [11:8]	Touch ID of Touch Point  MSB of Touch X Position in pixels

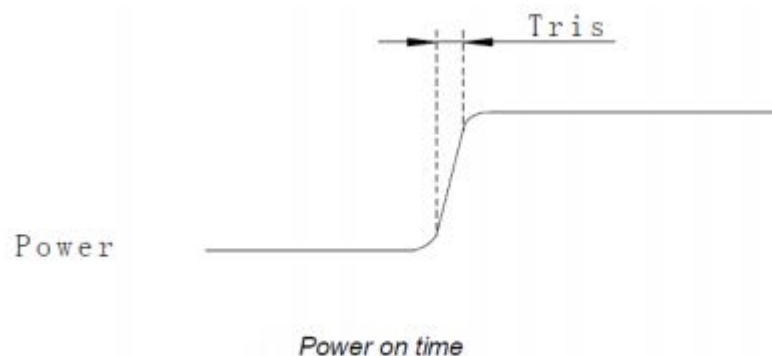
**11.3.10 TOUCHn\_XL (n:1-10)**

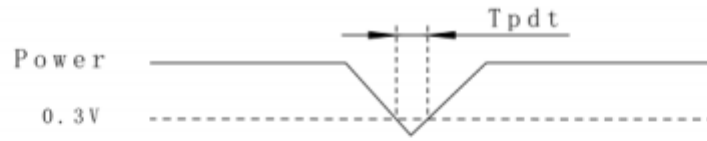
This register describes LSB of the X coordinate of the nth touch point.

Address	Bit Address	Register Name	Description
Op,06h ~ Op,3Ch	7:0	Touch X Position [7:0]	LSB of The Touch X Position in pixels

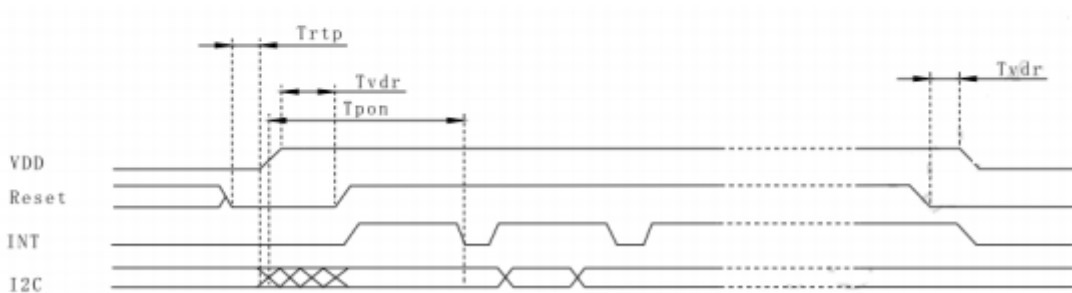
**11.4 POWER ON/Reset Sequence**

Reset should be pulled down to be low before powering on and powering down. I2C shouldn't be used by other devices during Reset time after VDD powering on (Trtp). INT signal will be sent to the host after initializing all parameters and then start to report points to the host. If Power is down, the voltage of supply must be below 0.3V and Tpd is more than 1ms.



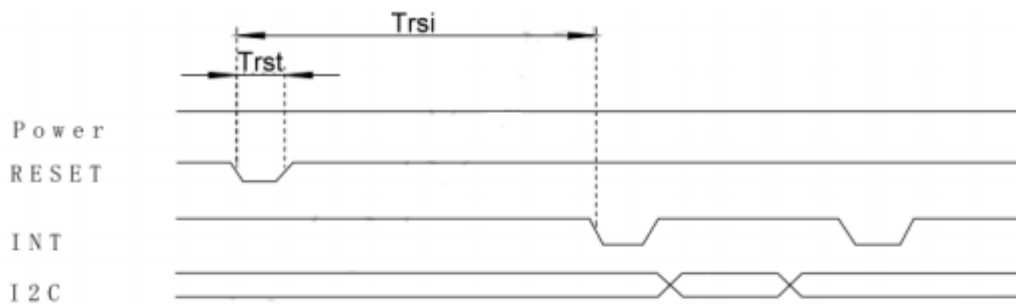


*Power Cycle requirement*



*Power on Sequence*

Reset time must be enough to guarantee reliable reset, the time of starting to report point after resetting approach to the time of starting to report point after powering on.



*Reset Sequence*

**Power on/Reset Sequence Parameters**

Parameter	Description	Min	Max	Units
$T_{ris}$	Rise time from 0.1VDD to 0.9VDD	--	5	ms
$T_{pd t}$	Time of the voltage of supply being below 0.3V	5	--	ms
$T_{rtp}$	Time of resetting to be low before powering on	100	--	$\mu s$
$T_{pon}$	Time of starting to report point after powering on	--	200	ms
$T_{vd r}$	Reset time after VDD powering on	1	--	ms
$T_{rsi}$	Time of starting to report point after resetting	--	200	ms
$T_{rst}$	Reset time	1	--	ms





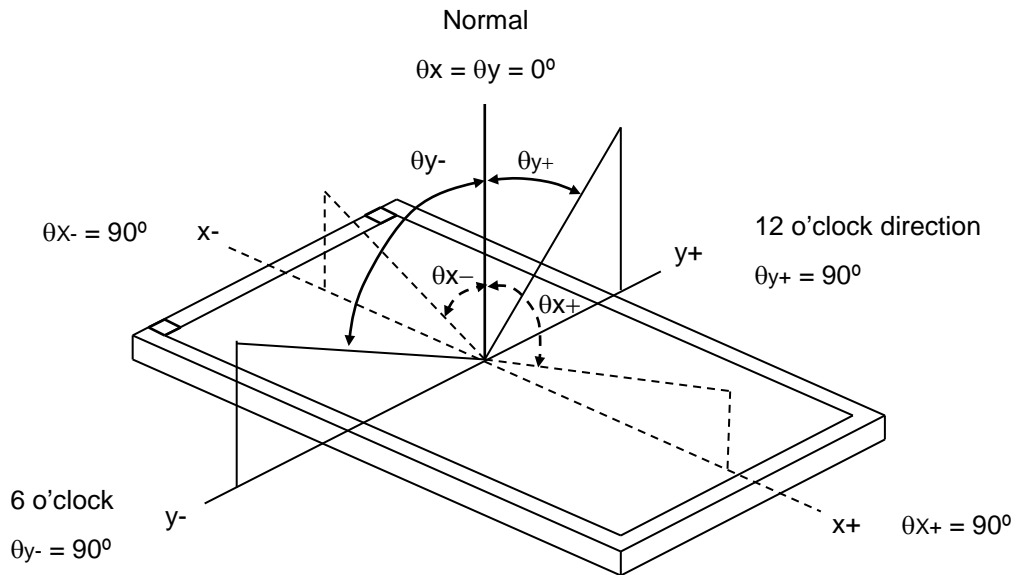
## 12. Optical Characteristics

The optical characteristics should be measured in a dark environment (  $\leq 1$  ) or equivalent state with the methods shown in Note (4).

Item		Symbol	Conditions	Min.	Typ.	Max.	Unit	Note
Contrast Ratio		CR	$\theta_x=0^\circ, \theta_y=0^\circ$	200	( 350 )	-	-	(2)
Response Time		$T_R$	Viewing	-	15	-	ms	(3)
		$T_F$	Normal Angle	-	35	-	ms	
Luminance ( Center )		Y	B/L=200mA	520	( 600 )	-	cd/m <sup>2</sup>	(4)
			B/L=150mA	390	( 450 )	-	cd/m <sup>2</sup>	
			B/L=100mA	260	( 300 )	-	cd/m <sup>2</sup>	
Brightness uniformity		BUNI		80	( 85 )	-	%	(5)
Color Chromaticity	Red	$R_x$	$\theta_x=0^\circ, \theta_y=0^\circ$ Viewing Normal Angle	0.570	0.620	0.670	-	(1),(4)
		$R_y$		0.300	0.350	0.400	-	
	Green	$G_x$		0.315	0.365	0.415	-	
		$G_y$		0.495	0.545	0.595	-	
	Blue	$B_x$		0.095	0.145	0.195	-	
		$B_y$		0.055	0.105	0.155	-	
	White	$W_x$		0.270	0.320	0.370	-	
		$W_y$		0.305	0.355	0.405	-	
Viewing Angle	Horizontal	$\theta_{x+}$	CR $\geq$ 10	55	( 65 )	-	deg.	
		$\theta_{x-}$		55	( 65 )	-		
	Vertical	$\theta_{y+}$		45	( 55 )	-		
		$\theta_{y-}$		55	( 65 )	-		



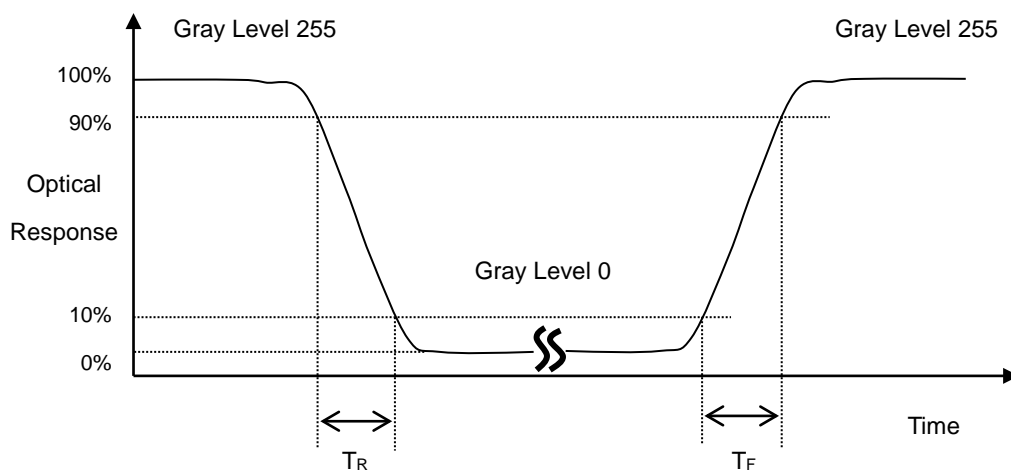
Note (1) Definition of Viewing Angle ( $\theta_x, \theta_y$ ):



Note (2) Definition of Contrast Ratio (CR):

$$\text{Contrast ratio (CR)} = \frac{\text{Luminance measured when LCD on the "White" state}}{\text{Luminance measured when LCD on the "Black" state}}$$

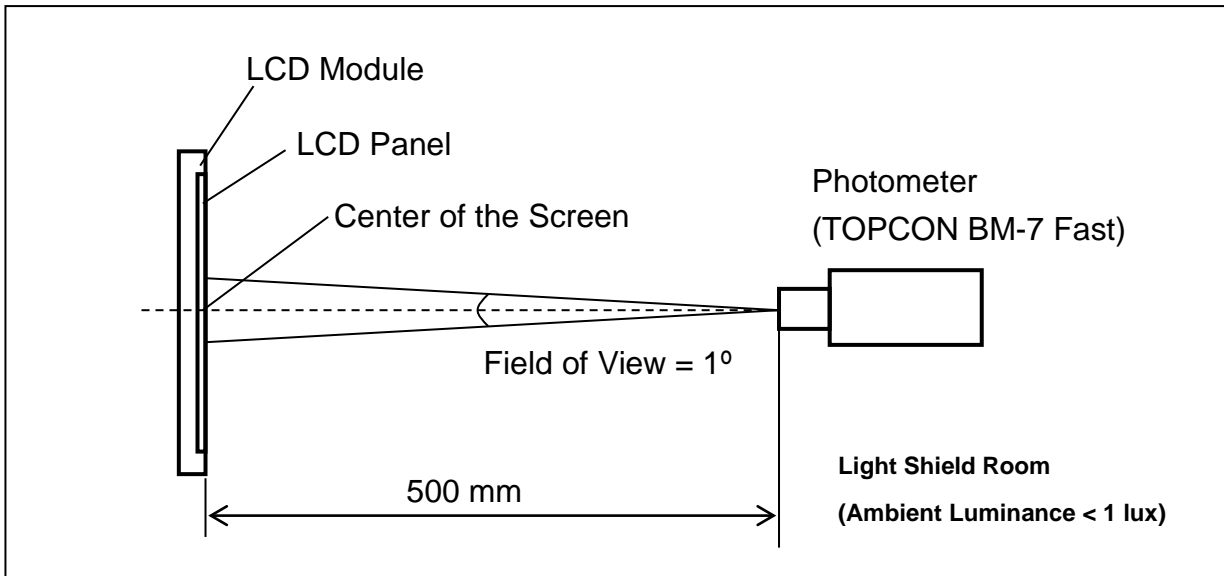
Note (3) Definition of Response Time ( $T_R, T_F$ ):





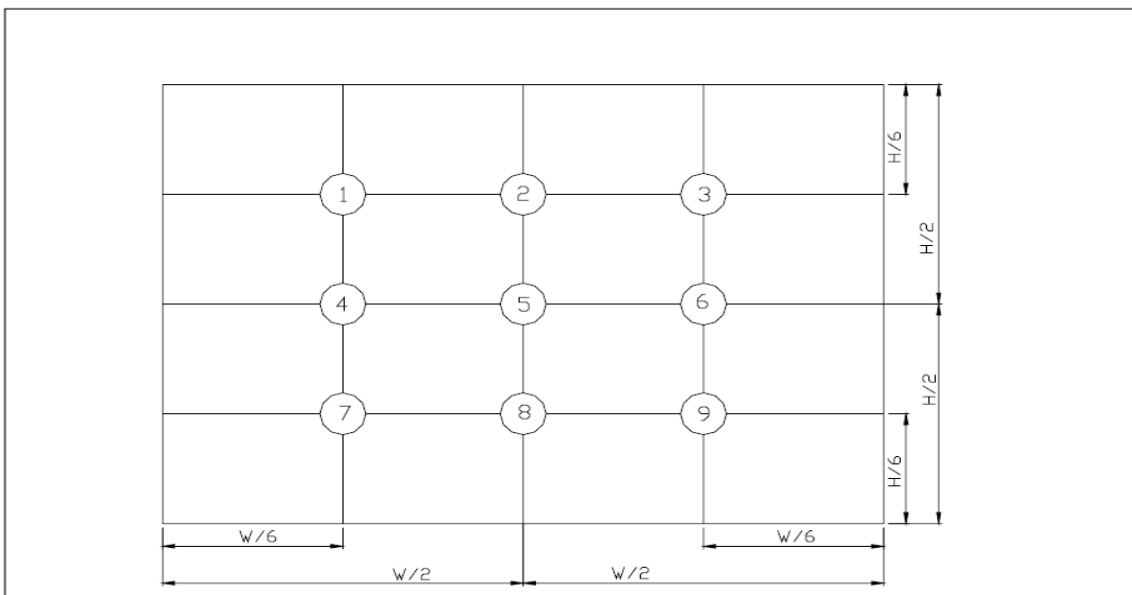
**Note (4) Measurement Set-Up:**

The LCD module should be stabilized at a given temperature for 30 minutes to avoid abrupt temperature change during measuring. In order to stabilize the luminance, the measurement should be executed after lighting Backlight for 30 minutes in a dark room or equivalent condition.



**Note (5) Definition of brightness uniformity**

$$\text{Brightness uniformity} = (\text{Min Luminance of 9 points}) / (\text{Max Luminance of 9 points}) \times 100\%$$



( 單位 : mm )

**13. Reliability Test**

No.	Test Items	Test Condition	Remark
1	High Temperature Storage Test	T <sub>a</sub> = 80°C 240 hours	(1),(3),(4)
2	Low Temperature Storage Test	T <sub>a</sub> = -30°C 240 hours	(1),(3),(4)
3	High Temperature Operation Test	T <sub>s</sub> = 70°C 240 hours	(2),(3),(4)
4	Low Temperature Operation Test	T <sub>a</sub> = -20°C 240 hours	(1),(3),(4)
5	High Temperature and High Humidity Operation Test	T <sub>a</sub> =60°C 90%RH 240 hours	(3), ( 4 )
6	Electro Static Discharge Test ( non-operating )	-Panel Surface/Top Case : 150pF, 330Ω Air : ±15kV, Contact: ±8kV	( 3 )
7	Mechanical Shock Test ( non-operating )	Half sine wave, 100G, 6ms 3 times shock of each six surfaces	( 3 )
8	Vibration Test ( non-operating )	Sine wave:10 ~ 55 ~ 10Hz amplitude:1.5mm 3 axis, 2 hours/axis	( 3 )
9	Thermal Shock Test ( non-operating )	-20°C ( 30min ) ~ 70°C ( 30min ) ,10 cycles	( 3 ) , ( 4 )
10	Drop Test(with Carton)	Height : 80cm 1 corner, 3 edges, 6 surfaces	( 3 )

Note 1 : T<sub>a</sub> is the ambient temperature of samples.

Note 2 : T<sub>s</sub> is the temperature of panel's surface.

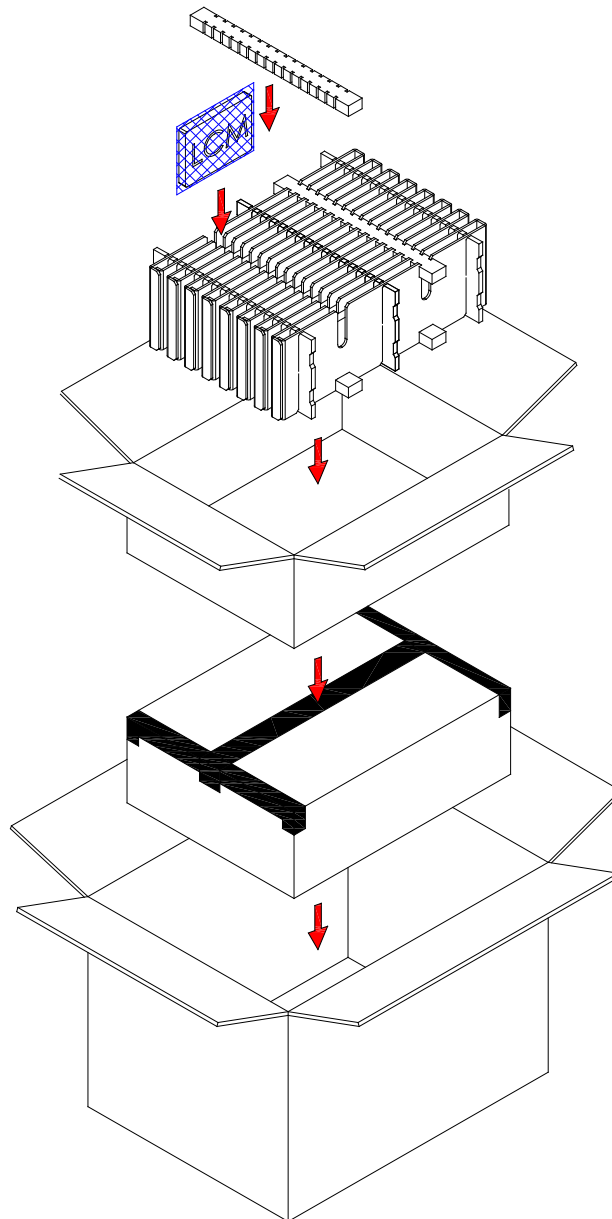
Note 3 : In the standard condition, there shall be no practical problem that may affect the display function.

After the reliability test, the product only guarantees operation, but don't guarantee all of the cosmetic specification.

Note 4 : Before cosmetic and function test, the product must have enough recovery time, at least 2 hours at room temperature.



### 14. Packaging



PARTS LIST					
	ITEM	SIZE(LxWxH) unit:mm	MATERIAL	Q.T.Y	NOTE
1	STATIC SHIELDING BAGS	300.0x145.0x0.09		60	
2	EPE PAD	345.0x30.0x20.0	EPE	8	
3	CARD BOARD	345.0x150.0x3.5	CARTON	6	
4	CARD BOARD	450.0x23.0x150.0	CARTON	16	
5	INTERNAL BOX	455.0x350.0x164.0	CARTON	2	
6	EXTERNAL BOX	475.0x370.0x375.0	CARTON	1	
7	PRODUCT	144.0x104.6x14.6		60	



## 15. Precautions

### 15.1 Assembly and Handling Precautions

- (1) Do not apply rough force such as bending or twisting to the module during assembly.
- (2) It's recommended to assemble or to install a module into the user's system in clean working areas. The dust and oil may cause electrical short or worsen the polarizer.
- (3) Don't apply pressure or impulse to the module to prevent the damage of LCD panel and Backlight.
- (4) Always follow the correct power-on sequence when the LCD module is turned on. This can prevent the damage and latch-up of the CMOS LSI chips.
- (5) Do not plug in or pull out the I/F connector while the module is in operation.
- (6) Do not disassemble the module.
- (7) Use a soft dry cloth without chemicals for cleaning, because the surface of polarizer is very soft and easily scratched.
- (8) Moisture can easily penetrate into LCD module and may cause the damage during operation.
- (9) High temperature or humidity may deteriorate the performance of LCD module. Please store LCD module in the specified storage conditions.
- (10) When ambient temperature is lower than 10°C, the display quality might be reduced. For example, the response time will become slow.

### 15.2 Safety Precautions

- (1) If the liquid crystal material leaks from the panel, it should be kept away from the eyes or mouth. In case of contact with hands, skin or clothes, it has to be washed away thoroughly with soap.
- (2) After the module's end of life, it is not harmful in case of normal operation and storage.

### 15.3 Terms of Warrant

- (1) Acceptance inspection period  
The period is within one month after the arrival of contracted commodity at the buyer's factory site.
- (2) Applicable warrant period  
The period is within twelve months since the date of shipping out under normal using and storage conditions.



**P-TEC**

**MODEL NO.**

**PAGE**

PT644857B-TLMWD-EMC10

SPEC ONLY

31

### **15.4 Caution**

This P-tec LCD module has been specifically designed for use only in electronic devices in the areas of audio control, office automation, industrial control, home appliances, etc. The modules should not be used in applications where module failure could result in physical harm or loss of life, and P-tec expressly disclaims any and all liability relating in any way to the use of the module in such applications.



**P-TEC**

**MODEL NO.**  
PT644857B-TLMWD-EMC10

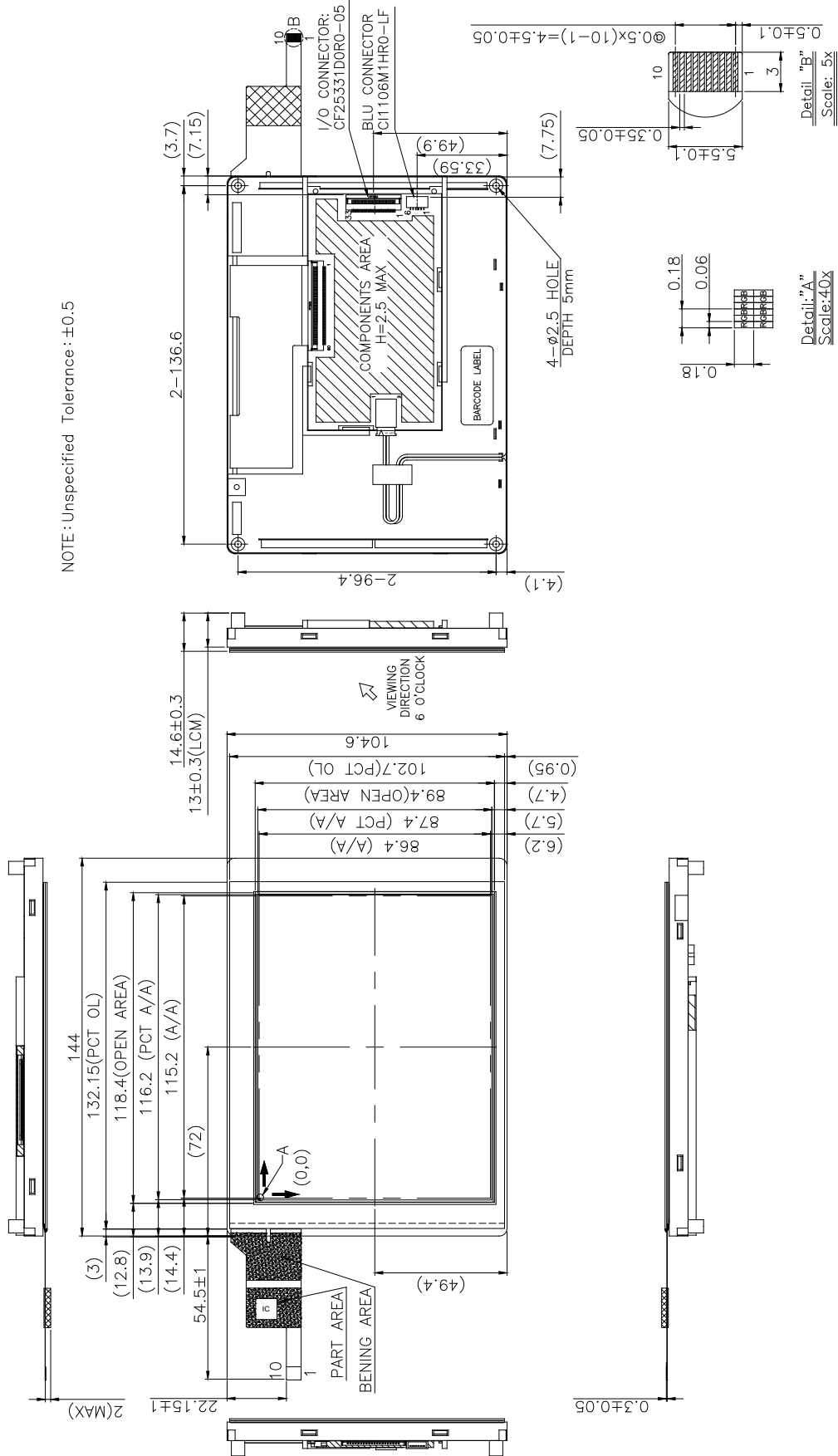
**SPEC ONLY**

**PAGE**

32

### 16.Outline Drawing

NOTE : Unspecified Tolerance : ±0.5

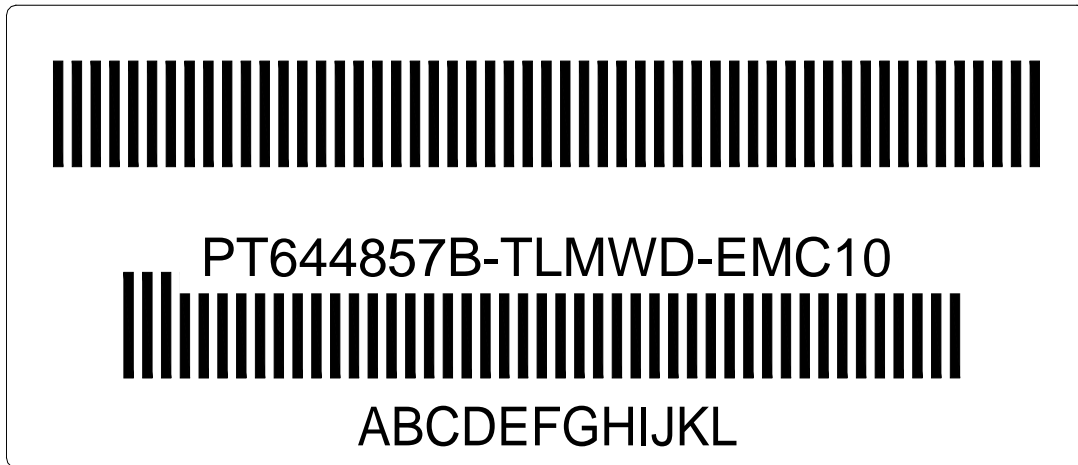






### 17. Definition of Labels

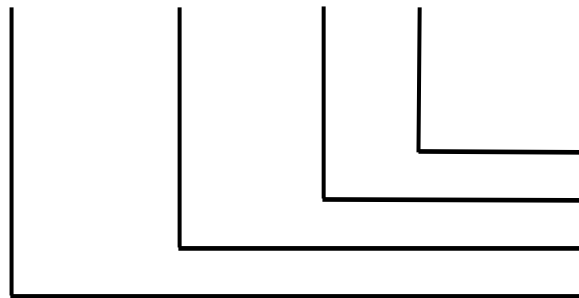
The bar code nameplate is pasted on each module as illustration, and its definitions are as following explanation.



( a ) Module Name : PT644857B-TLMWD-EMC10

( b ) Serial ID :

  A     B     C     D     E     F     G     H     I     J     K     L  



Serial No.  
Factory Code  
Manufactured Date  
Screen Size

Serial ID includes the information as below :

( a ) Screen size ( Diagonal ) : Inch Code ( ABCD )

3.5" → 0350

10.4" → 1040

( b ) Manufactured Date : Year, Month, Day ( EFG )

Year ( E )

Year	2000	2001	2002	2003	2004	2005	2006	2007	2008	2009
Mark	0	1	2	3	4	5	6	7	8	9
Year	2010	2011	2012	2013	2014	2015	2016	2017	2018	2019
Mark	A	B	C	D	E	F	G	H	I	J



Month ( F )

Month	Jan.	Feb.	Mar.	Apr.	May	Jun.	Jul.	Aug.	Sep.	Oct.	Nov.	Dec.
Mark	1	2	3	4	5	6	7	8	9	A	B	C

Day ( G )

Day	1	2	3	4	5	6	7	8	9	10	11	12	13	14	15	16
Mark	1	2	3	4	5	6	7	8	9	A	B	C	D	E	F	G
Day	17	18	19	20	21	22	23	24	25	26	27	28	29	30	31	
Mark	H	I	J	K	L	M	N	O	P	Q	R	S	T	U	V	

( c ) Factory Code ( H ) :

For P-TEC internal use.

( d ) Serial No. ( IJKL ) :

Manufacturing sequence of product, for example : 0001~9999.

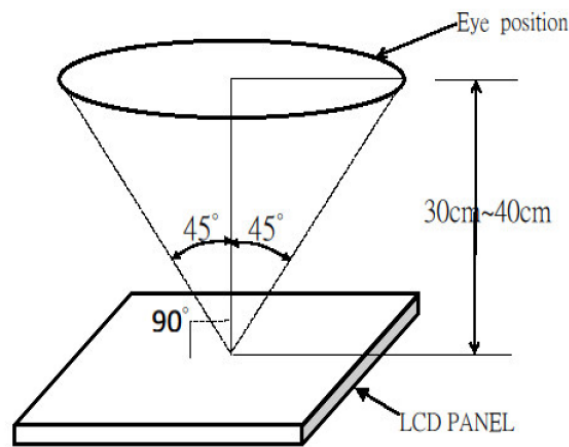


### 18. Incoming Inspection Standards

#### 18.1 The environmental condition of inspection

The environmental condition and visual inspection shall be conducted as below.

- (1) Ambient temperature  $25 \pm 5^{\circ}\text{C}$
- (2) Humidity: 45 ~ 65 % RH
- (3) Viewing distance is approximately 30 ~ 40 cm
- (4) Viewing angle is normal to the LCD panel as Fig \_1 (  $\pm 45^{\circ}$  )
- (5) Ambient Illumination: 300 ~ 500 Lux for external appearance inspection



Fig\_1

#### 18.2 The defects classify of AQL as following:

- (1) Test method :According to [ANSI/ASQC Z 1.4](#) .General Inspection Level II take a single time
- (2) The defects classify of AQL as following:



Class of defects	AQL	Definition
Major	0.65%	It is defect that is likely to result in failure or to reduce materially the usability of the intended function.
Minor	1.5%	It is a defect that will not result in functioning problem with deviation classified.



### 18.3 Inspection Parameters

Item		Specification/Description			Note	
Display	Function	No Display			-	
		Malfunction			-	
Operating	Contrast ratio	Out of Spec			-	
	Line defect	No obvious Vertical and Horizontal line defect in bright , dark and colored.			-	
	Point Defect (red ,green ,blue ,dark ,white)	Item	Acceptable number			Note: 1、4 5、6
			A	B	Total	
		BRIGHT DOT	$N \leq 2$	$N \leq 2$	$N \leq 7$	
		DARK DOT	$N \leq 3$	$N \leq 4$		
		TOTAL DOT	$N \leq 4$	$N \leq 5$		
TWO ADJACENT DOT	NOT ALLOWED					
THREE OR MORE ADJACENT DOT	NOT ALLOWED					
External Inspection (non-operating or operating)	Scratch (in display area)	L(mm)	W(mm)	Acceptable number	Note:2	
		$L \leq 2.5$	$W \leq 0.1$	4		
		$L > 2.5$	$W > 0.1$	0		
	Polarizer dent or bubble (in display area)	Dimension(mm)		Acceptable number	Note:3	
		$D \leq 0.25$		Disregard		
		$D \leq 0.5$		4		
	Line Shape (Particles and Lint in display area)	L(mm)	W(mm)	Acceptable number	Note:2	
		-	$W \leq 0.07$	Disregard		
		$L \leq 5$	$W \leq 0.1$	4		
		$L \geq 5$	$W \geq 0.1$	0		
	Dot Shape (Particle in Display area)	Dimension(mm)		Acceptable number	Note:3	
		$D \leq 0.25$		Disregard		
$D \leq 0.5$		4				



Item	Specification/Description	Note
External Inspection (non-operating or operating)	<p>Has the non-uniform phenomenon</p>  <p>mura</p>	
	<p>mura</p> <p>Weak defect will be defined as mura if it can be observed through ND filter 6%</p>  <p>6% ND filter</p>	



**Incoming Inspection Touch Panel**

Circular Defects  
 Linear Defects  
 Scratch  
 Air Bubble  
 Crack

Y:  
 Long breakage

Z:  
 Wide breakage

D:  
 thickness  
 breakage

T:  
 single piece of  
 glass thickness  
 (Touch sensor  
 single thickness)

VA:  
 Touch control  
 panel viewing  
 area.

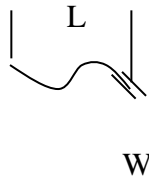
Sensor wide:  
 the size of the  
 long side of the  
 touch panel.

(1) Circular Defects

$$\psi = (L+W)/2$$

Diameter(mm)	Spec
$\psi \leq 0.2$	No quantity limit
$0.2 < \psi \leq 0.4$	Max 5 defect
$0.5 \leq \psi$	Reject

(2) Linear Defects



Length	Width	Acceptable
$8.0 \geq L$	$0.06 \geq W$	Accept
$8.0 \geq L$	$0.08 \geq W$	Max 5 defect
$L > 8.0$	$W > 0.08$	Reject
The Min distance of defects must be above 15.0mm.		

(3) Scratch

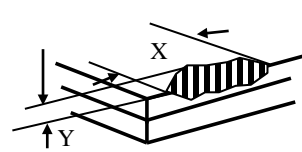
Length	Width	Acceptable
$8.0 \geq L$	$0.06 \geq W$	Accept
$8.0 \geq L$	$0.08 \geq W$	Max 5 defect
$L > 12.0$	$W > 0.08$	Reject
The Min distance of defects must be above 15.0mm.		

(4) Air Bubble

Diameter(mm)	Spec
$\psi \leq 0.2$	No quantity limit
$0.2 < \psi \leq 0.6$	Max 3 defect
The Min distance of defects must be above 10.0mm.	

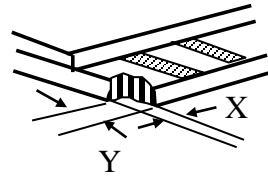


(5)Crack



$Z \square T, X \square 1/8$  Sensor wide  
Y: Did not enter the VA

(Accept)



$X \square 3\text{mm}$  and  $Y \square 1/3D$

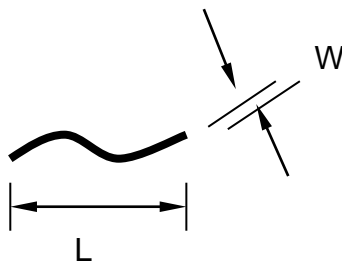
(Accept)



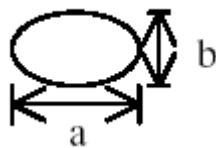
(Reject)

Note1. The definition of dot defect : The dot defect was judged after repair and the size of a defective dot over 1/2 of whole dot is regarded as one defective dot.

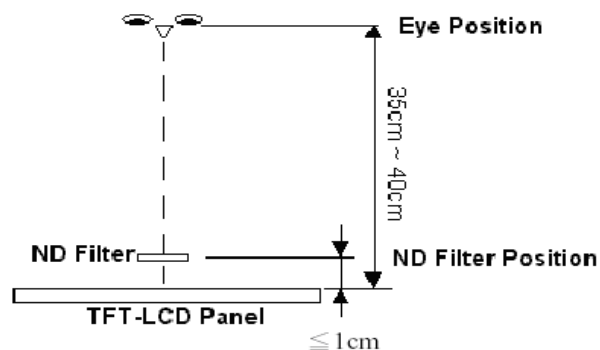
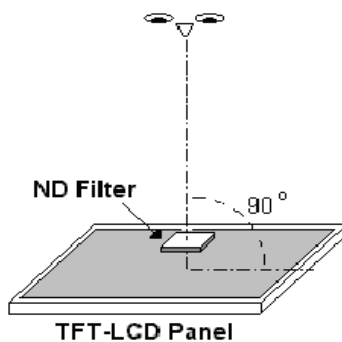
Note2.



Note3. D : Diameter  $D=(a+b)/2$



Note4. Bright dot is defined through 6% transmission ND Filter as following.

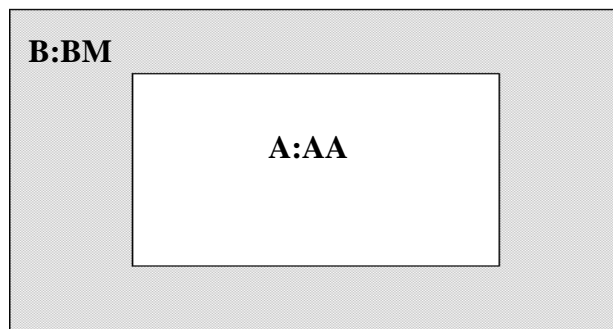




Note5. ADJACENT DOT



Note6.



### 18.4 Handling of LCM

- (1) Don't give external shock.
- (2) Don't apply excessive force on the surface.
- (3) Liquid in LCD is hazardous substance. Must not lick and swallow. when the liquid is attach to your hand, skin, cloth etc. Wash it out thoroughly and immediately.
- (4) Don't operate it above the absolute maximum rating.
- (5) Don't disassemble the LCM.