

PLEASE CHECK WWW.MOLEX.COM FOR LATEST PART INFORMATION

Part Number: [0675810001](#)
Status: **Active**
Overview: [serial_ata_products](#)
Description: 1.27mm (.050") Pitch Serial ATA Crimp Terminal for Power Cable Receptacle, 0.76µm (30µ") Gold (Au) Plating, with Reel Direction - Type 1, Lead free

Documents:

[3D Model](#) [Product Specification PS-67490-002 \(PDF\)](#)
[Drawing \(PDF\)](#) [RoHS Certificate of Compliance \(PDF\)](#)

General

| | |
|-------------------------|-------------------------------------|
| Product Family | Crimp Terminals |
| Series | 67581 |
| Crimp Quality Equipment | Yes |
| Overview | serial_ata_products |
| Product Name | Serial ATA |

Physical

| | |
|--------------------------------|--------------------------|
| Durability (mating cycles max) | 50 |
| Gender | Female |
| Material - Metal | Phosphor Bronze |
| Material - Plating Mating | Gold |
| Material - Plating Termination | Tin |
| Packaging Type | Reel |
| Plating min: Mating (µin) | 30 |
| Plating min: Mating (µm) | 0.76 |
| Plating min: Termination (µin) | 73.82 |
| Plating min: Termination (µm) | 1.85 |
| Termination Interface: Style | Crimp or Compression |
| Wire Insulation Diameter | 2.20-1.60mm(0.087-0.063) |
| Wire Size AWG | 18, 20, 22 |
| Wire Size mm ² | 3.79-2.00 |

Electrical

| | |
|-------------------------------|--------|
| Current - Maximum per Contact | 1.5A |
| Voltage - Maximum | 15V DC |

Solder Process Data

| | |
|------------------------------|------------------------|
| Lead-free Process Capability | Wave Capable (TH only) |
|------------------------------|------------------------|

Material Info

Reference - Drawing Numbers

| | |
|-------------------------|--------------|
| Packaging Specification | PK-67581-001 |
| Product Specification | PS-67490-002 |
| Sales Drawing | SD-67581-001 |

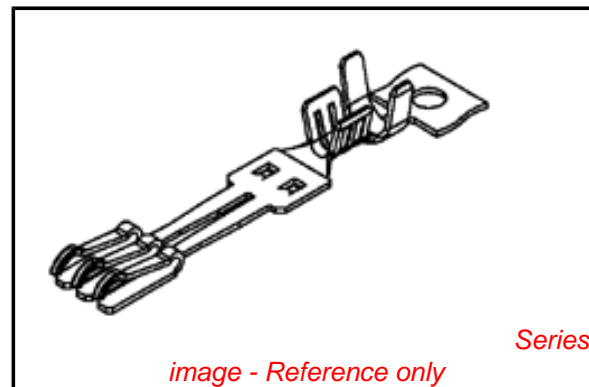


image - Reference only

EU RoHS

**ELV and RoHS
Compliant**
REACH SVHC
 Not Reviewed
**Halogen-Free
Status**

China RoHS



**Need more information on product
environmental compliance?**

Email productcompliance@molex.com
 For a multiple part number RoHS Certificate of Compliance, [click here](#)

Please visit the [Contact Us](#) section for any non-product compliance questions.

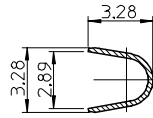
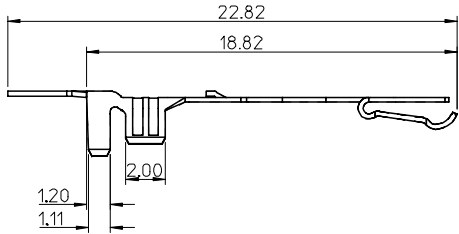
Search Parts in this Series

[67581Series](#)

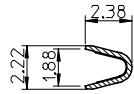
Use With

[67582 Crimp Housing](#)

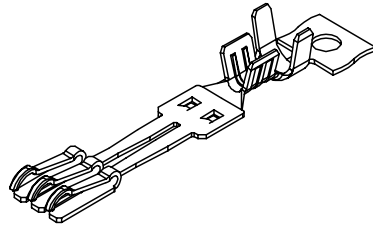
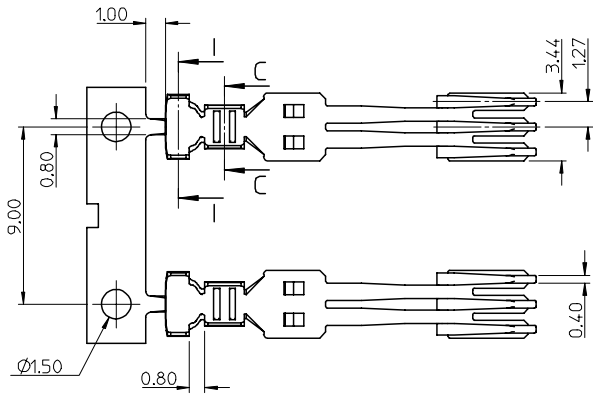
10 9 8 7 6 5 4 3 2 1



Section I-I

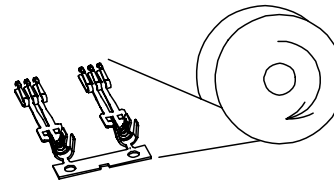


Section C-C

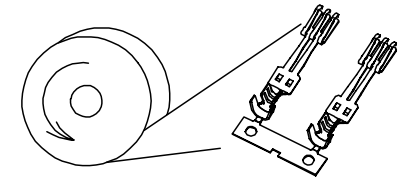


NOTES:

- MATERIAL :
PHOSPHOR BRONZE, THICKNESS = 0.25mm
- PLATING :
CONTACT AREA: (A) GOLD FLASH
(B) GOLD PLATED 0.76 MICRON.
(C) GOLD PLATED 0.38 MICRON.
CRIMPING AREA: TIN PLATED 1.875 MICRON MINIMUM.
UNDER PLATE: NICKELPLATED 1.25 MICRON MINIMUM.
- TO BE USED WITH 67582, 5 SETS TERMINAL PER HOUSING
- PRODUCT SPECIFICATION REFER TO PS-67490-002
- PACKAGE SPECIFICATION REFER TO PK-67581-001
- CRIMPING SPECIFICATION REFER TO CS-67581-001
- RECOMMEND WIRE SIZE: 18/20/22AWG
- PRODUCT COMPLIANT TO RoHS DIRECTIVE 2002/95/EC AND ELV DIRECTIVE 2000/53/EC.



BEFORE CRIMPING
TYPE I



BEFORE CRIMPING
TYPE II

| P/N | CONTACT AREA GOLD PLATING | TYPE |
|------------|---------------------------|---------|
| 67581-0000 | GOLD FLASH | TYPE I |
| 67581-0001 | 0.76 MICRON GOLD PLATING | |
| 67581-0002 | 0.38 MICRON GOLD PLATING | |
| 67581-0010 | GOLD FLASH | TYPE II |
| 67581-0011 | 0.76 MICRON GOLD PLATING | |
| 67581-0012 | 0.38 MICRON GOLD PLATING | |

| | | | | | | | | | | | |
|---|--|-------------------------------|--|-------|---|----------------------|---------------------|---|------------------------|--|--|
| NEW RELEASE EC NO: SH2007-0312 DRWN: BCHENZ6 CHKD: JTIAN APPR: JNCHEN | 2006/11/01 2006/11/03 2006/11/07 | QUALITY SYMBOLS ▽=0 ▽=0 | GENERAL TOLERANCES (UNLESS SPECIFIED) | | DIMENSION STYLE MM ONLY | | SCALE 4:1 | DESIGN UNITS METRIC | THIRD ANGLE PROJECTION | | |
| | | | | mm | INCH | DRAWN BY GRATE MA | DATE 2003/08/15 | TITLE TERMINAL FOR SATA POWER CABLE RECEPTACLE | | | |
| | | | 4 PLACES | ± --- | ± --- | CHECKED BY YA JUN | DATE 2003/08/15 | | | | |
| | | | 3 PLACES | ± --- | ± --- | APPROVED BY SAM | DATE 2003/08/15 | MATERIAL NO. SEE TABLE | | | |
| 2 PLACES | ± 0.25 | ± .010 | DRAFT WHERE APPLICABLE MUST REMAIN WITHIN DIMENSIONS | | DOCUMENT NO. SD-67581-001 | | SHEET NO. 1 OF 1 | | | | |
| 1 PLACE | ± 0.25 | ± .010 | | | THIS DRAWING CONTAINS INFORMATION THAT IS PROPRIETARY TO MOLEX INCORPORATED AND SHOULD NOT BE USED WITHOUT WRITTEN PERMISSION | | | | | | |
| | | ANGULAR ± 3 ° | | | | | | | | | |

9 8 7 6 5 4 3 2 1