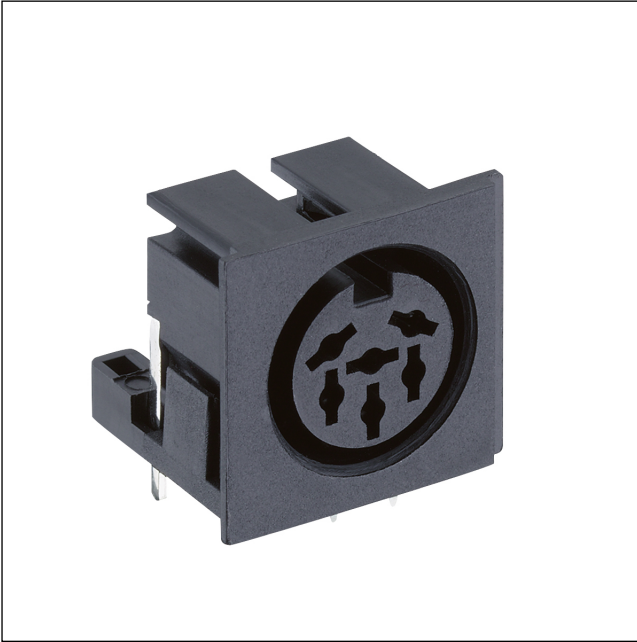


01

0105

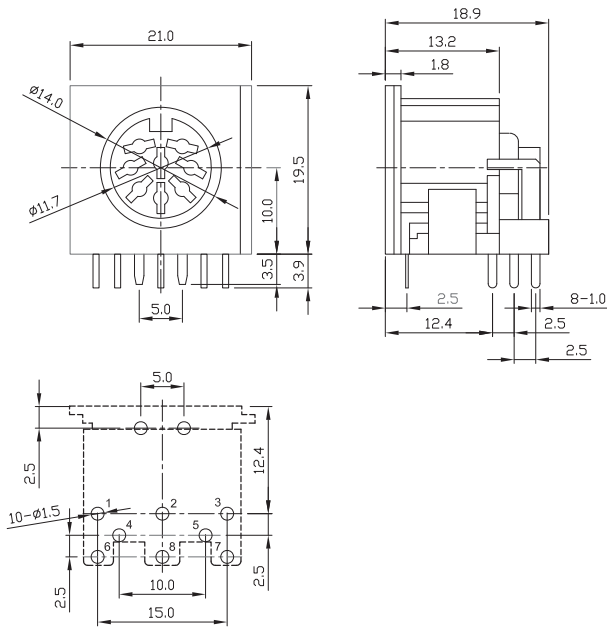
DIN circular connectors



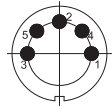
DIN chassis socket, right angle version, with ground contact, suitable for locking, for printed circuit boards

01

0105

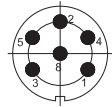


DIN 41524



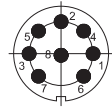
0105 05

DIN 45322



0105 06

DIN 45326



0105 08-1

- \*a distance of ground contact pins 5 mm
- \*b Printed circuit board layout, solder side view

#### Environmental conditions

Temperature range -20 °C/+70 °C

#### Materials

|                       |                            |
|-----------------------|----------------------------|
| Insulating body       | PBT, V-0 according to UL94 |
| Contact spring        | CuZn, tin-plated           |
| Ground contact spring | CuZn, tin-plated           |
| Cover                 | PBT, V-0 according to UL94 |



#### Mechanical data

|                  |          |
|------------------|----------|
| Mating cycles    | 5000     |
| Insertion force  | 4,9–49 N |
| Withdrawal force | 4,9–49 N |

#### Electrical data (at T<sub>amb</sub> 20 °C)

|                       |                |
|-----------------------|----------------|
| Contact resistance    | ≤ 20 mΩ        |
| Rated current         | 4 A            |
| Rated voltage         | 24 V AC        |
| Rated impulse voltage | 1000 V AC/60 s |
| Insulation resistance | ≥ 100 MΩ       |

#### Associated products

Counterparts  
 0131       0137

01

0105

| Designation | Pole Number | PU (Pieces) | MDQ (Pieces) |
|-------------|-------------|-------------|--------------|
| 0105 05     | 5           | 100         | 300          |
| 0105 06     | 6           | 100         | 300          |
| 0105 08-1   | 8           | 100         | 300          |

**Packaging:**  
in a tray