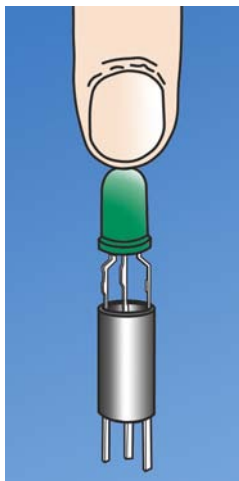
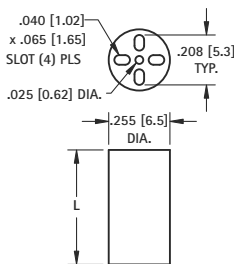


"UNIVERSAL" FOR T-1 & T-1 3/4



- Unique design separates leads and retains Tri-Lead and Bi-Lead components.
- Designed for PC board mounting of Tri-Lead and Bi-Lead T-1 and T-1 3/4 LEDs
- Provides height control, lead retention and stability.
- Also suitable for mounting lamps, resistors, transistors, diodes, capacitors, etc.

MATERIAL: Black PVC, UL Rated 94V-0



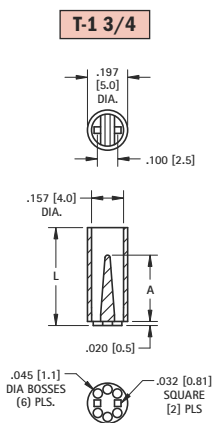
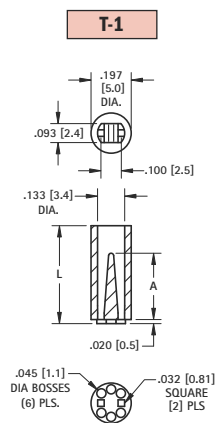
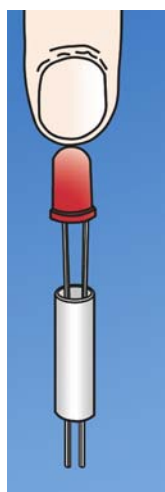
| FOR T-1 3/4 and T-1 | | | |
|---------------------|------------|----------|-------------|
| CAT. NO. | L LENGTH | CAT. NO. | L LENGTH |
| 8900 | .120 (3.0) | 8916 | .400 (10.2) |
| 8901 | .140 (3.6) | 8917 | .420 (10.7) |
| 8902 | .160 (4.1) | 8918 | .440 (11.2) |
| 8903 | .180 (4.6) | 8919 | .450 (11.4) |
| 8904 | .200 (5.1) | 8920 | .460 (11.7) |
| 8905 | .220 (5.6) | 8921 | .480 (12.2) |
| 8906 | .240 (6.1) | 8922 | .500 (12.7) |
| 8907 | .250 (6.4) | 8923 | .550 (14.0) |
| 8908 | .260 (6.6) | 8924 | .600 (15.2) |
| 8909 | .280 (7.1) | 8925 | .650 (16.5) |
| 8910 | .300 (7.6) | 8926 | .700 (17.8) |
| 8911 | .320 (8.1) | 8927 | .750 (19.1) |
| 8912 | .340 (8.6) | 8928 | .800 (20.3) |
| 8913 | .350 (8.9) | 8929 | .850 (21.6) |
| 8914 | .360 (9.1) | 8930 | .900 (22.9) |
| 8915 | .380 (9.7) | 8931 | .925 (23.5) |

"SELF-ALIGNING" FOR BI-LEAD T-1 & T-1 3/4

KEY FEATURES

- Positive self-alignment of leads on .100 (.25) centers.
- No special tools required

MATERIAL: Natural Nylon, UL Rated 94V-2



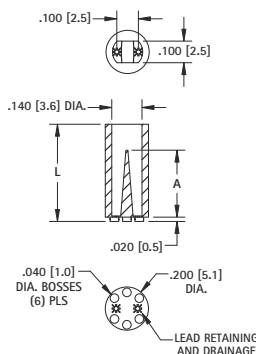
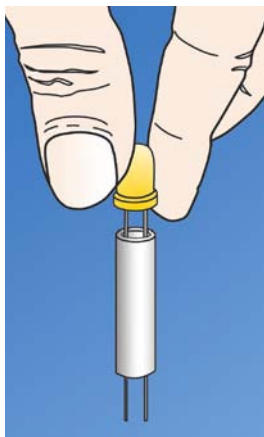
- This features an internally tapered barrier which guides the leads and eliminates crimping or shorting.
- The bottom bosses serve the dual purpose of heat dissipation and easy post soldering cleanup.

| T-1 3/4 | T-1 | L LENGTH | A REF. | T-1 3/4 | T-1 | L LENGTH | A REF. |
|---------|------|------------|------------|---------|------|-------------|-------------|
| 8311 | 7351 | .120 (3.0) | .075 (1.9) | 8327 | 7367 | .400 (10.2) | .325 (8.3) |
| 8312 | 7352 | .140 (3.6) | | 8328 | 7368 | .420 (10.7) | |
| 8313 | 7353 | .160 (4.1) | | 8329 | 7369 | .440 (11.2) | |
| 8314 | 7354 | .180 (4.6) | | 8330 | 7370 | .450 (11.4) | |
| 8315 | 7355 | .200 (5.1) | | 8331 | 7371 | .460 (11.7) | |
| 8316 | 7356 | .220 (5.6) | | 8332 | 7372 | .480 (12.2) | |
| 8317 | 7357 | .240 (6.1) | .190 (4.8) | 8333 | 7373 | .500 (12.7) | .450 (11.4) |
| 8318 | 7358 | .250 (6.4) | | 8334 | 7374 | .550 (14.0) | |
| 8319 | 7359 | .260 (6.6) | | 8335 | 7375 | .600 (15.2) | |
| 8320 | 7360 | .280 (7.1) | | 8336 | 7376 | .650 (16.5) | |
| 8321 | 7361 | .300 (7.6) | | 8337 | 7377 | .700 (17.8) | |
| 8322 | 7362 | .320 (8.1) | | 8338 | 7378 | .750 (19.1) | |
| 8323 | 7363 | .340 (8.6) | .200 (5.1) | 8339 | 7379 | .800 (20.3) | .690 (17.5) |
| 8324 | 7364 | .350 (8.9) | | 8340 | 7380 | .850 (21.6) | |
| 8325 | 7365 | .360 (9.1) | | 8341 | 7381 | .900 (22.9) | |
| 8326 | 7366 | .380 (9.7) | | 8342 | 7382 | .925 (23.5) | |

"SELF-RETAINING" FOR T-1

- Features internal retention "teeth" which secure LED leads onto spacers.
- This features an internally tapered barrier which guides the leads and eliminates crimping or shorting.
- The bottom bosses serve the dual purpose of heat dissipation and easy post soldering cleanup.

MATERIAL: Natural Nylon, UL Rated 94V-2



KEY FEATURES

- Internal design eliminates crimping or shorting of leads
- Self alignment of leads on .100 (.25) centers.
- Spacer will stay gripped to LED leads during assembly
- No special tools required

| T-1 | L LENGTH | A REF. | T-1 | L LENGTH | A REF. |
|------|------------|------------|------|-------------|-------------|
| 7030 | .120 (3.0) | .060 (1.5) | 7046 | .400 (10.2) | .310 (7.9) |
| 7031 | .140 (3.6) | | 7047 | .420 (10.7) | |
| 7032 | .160 (4.1) | | 7048 | .440 (11.2) | |
| 7033 | .180 (4.6) | | 7049 | .450 (11.4) | |
| 7034 | .200 (5.1) | | 7050 | .460 (11.7) | |
| 7035 | .220 (5.6) | | 7051 | .480 (12.2) | |
| 7036 | .240 (6.1) | .185 (4.7) | 7052 | .500 (12.7) | .435 (11.0) |
| 7037 | .250 (6.4) | | 7053 | .550 (14.0) | |
| 7038 | .260 (6.6) | | 7054 | .600 (15.2) | |
| 7039 | .280 (7.1) | | 7055 | .650 (16.5) | |
| 7040 | .300 (7.6) | | 7056 | .700 (17.8) | |
| 7041 | .320 (8.1) | | 7057 | .750 (19.1) | |
| 7042 | .340 (8.6) | .310 (7.9) | 7058 | .800 (20.3) | .650 (14.2) |
| 7043 | .350 (8.9) | | 7059 | .850 (21.6) | |
| 7044 | .360 (9.1) | | 7060 | .900 (22.9) | |
| 7045 | .380 (9.7) | | 7061 | .925 (23.5) | |