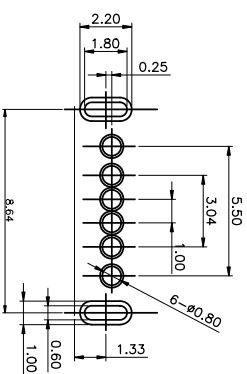
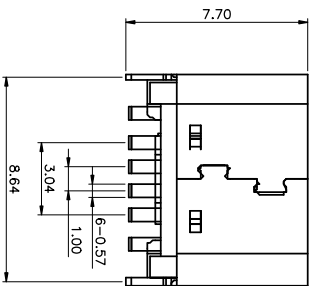
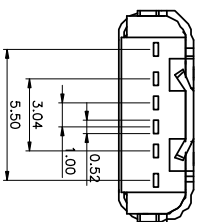
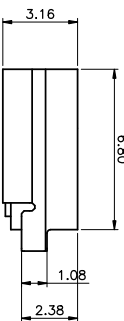
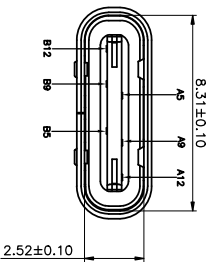
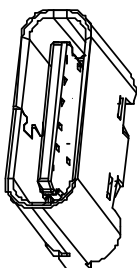
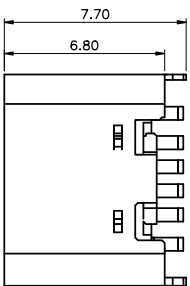


ROHS



RECOMMENDED P.C.B. LAYOUT
TOLERANCE UNSPECIFIED ±0.05mm

MAPX	MODIFICATION	DRW	DATE

NOTES:
1. MATERIAL: SEE "TABLE 1";
2. FINISH: SEE "TABLE 1";

3. ELECTRICAL :

3-1. CONTACT CURRENT RATING :
3A (VBUS PIN 1.5A/PIN MAX),
3A (GND PIN 1.25A/PIN MAX), 0.25A/PIN
(OTHER PIN).

3-2. INSULATION RESISTANCE :
100 MEGOHMS MIN. AT 250VDC.

3-3. DIELECTRIC WITHSTANDING VOLTAGE :
100VAC MIN.

3-4. LOW LEVEL CONTACT RESISTANCE :
INITIAL 40mΩ MAX.
AFTER 50mΩ MAX.

4. MECHANICAL CHARACTERISTICS :

4-1. MATING FORCE: 5~20N ;

4-2. UNMATING FORCE: 6~20N (INITIAL),
6~20N (AFTER 1500 CYCLES) ;

4-3. OPERATING TEMPERATURE : -40° C TO +80° C

B12	GND
B9	VBUS
B5	CC2
A5	CC1
A9	VBUS
A12	GND
PIN	SIGNAL NAME

TABLE 1:

NO.	PART NAME (INT)	MATERIAL	DESCRIPTION	REMARK
①	Shell	1	S15 304	NI PLATING
②	Terminal	6	CS680	NI PLATING
③	Welding	1	USP 180	IN PLATING

公差一览表		公差一览表	
TOLERANCE UNLESS OTHERWISE	公差	TOLERANCE UNLESS OTHERWISE	公差
X	±0.25	X	±5°
X	±0.20	X	±2°
.XX	±0.15	.XX	±1°
.XXX	±0.10	.XXX	±0.5°

产品图
PRODUCT CHART DWG

深圳市精拓金电子有限公司
Shenzhen Jing Tuo Jin Electronics Co., Ltd.

单位	制图	2-1-B	制图料号	918-4180202TY40001
比例	审核	郭治富	产品名称	TYPE-C3.1母座两期立式直插6.8/7.7
日期	核准	黄国荣	产品型号	不锈钢/CP 熏胶 6P/PIN
DATE	APPD		角法	版本
2016-09-09			VER	MD