

Han-Yellock 30 HSM 1xM20

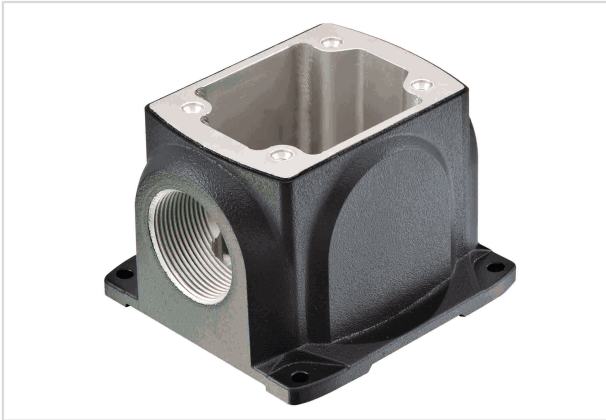


Image is for illustration purposes only. Please refer to product description.

Part number	11 12 300 1200
Specification	Han-Yellock 30 HSM 1xM20
HARTING eCatalogue	https://b2b.harting.com/11123001200

Identification

Category	Hoods/Housings
Series of hoods/housings	Han-Yellock®
Type of hood/housing	Surface mounted housing

Version

Locking type	Screw locking
Size	Han-Yellock® 30
Version	Side entry
Cable entry	1x M20
Field of application	Hoods/housings for industrial applications

Technical characteristics

Limiting temperature	-40 ... +125 °C
Un-/locking temperature	-10 ... +85 °C
Degree of protection acc. to IEC 60529	IP65 IP67

Material properties

Material (hood/housing)	Aluminium die-cast
Surface (hood/housing)	Powder-coated
Colour (hood/housing)	RAL 7021 (black grey)
Material (seal)	NBR
Material flammability class acc. to UL 94	V-0



Pushing Performance

Material properties

RoHS	compliant
ELV status	compliant
China RoHS	e
REACH Annex XVII substances	No
REACH ANNEX XIV substances	No
REACH SVHC substances	No

Specifications and approvals

Specifications	EN 60664-1 IEC 61984
Approvals	DNV GL
CE	Yes

Commercial data

Packaging size	1
Net weight	416 g
Country of origin	China
European customs tariff number	85389099
eCl@ss	27440202 Shell for industrial connectors