

Ultrasonic sensor, transmitter

UBE15M-F54-H1-V1

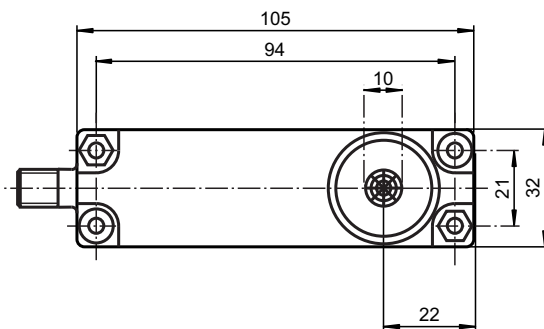


- Large sensing range
- Large possible lateral distance between emitter and receiver
- Separate evaluation

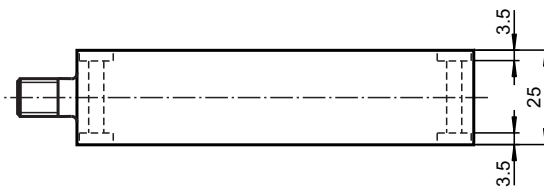
Multi-head system



Dimensions



Bore hole and countersinking for screws/hexagon M4



Technical Data

General specifications

Sensing range	0 ... 15000 mm , emitter - receiver synchronised	
Transducer frequency	approx. 40 kHz	
Angle of divergence	± 45 ° at -6 dB	
Temperature drift of echo propagation delay	0.2 %/K	

Electrical specifications

Operating voltage	U_B	16 ... 30 V DC , ripple 10 % _{SS} 8 V DC with reduced transmitting power
No-load supply current	I_0	≤ 10 mA (typ. 6 mA at $U_B = 24$ V DC)

Input

Release date: 2020-03-20 Date of issue: 2021-02-05 Filename: 114519_eng.pdf

Refer to "General Notes Relating to Pepperl+Fuchs Product Information".

Pepperl+Fuchs Group
www.pepperl-fuchs.com

USA: +1 330 486 0001
fa-info@us.pepperl-fuchs.com

Germany: +49 621 776 1111
fa-info@de.pepperl-fuchs.com

Singapore: +65 6779 9091
fa-info@sg.pepperl-fuchs.com

PF PEPPERL+FUCHS

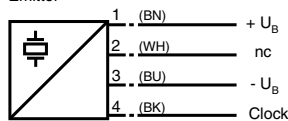
Technical Data

Input type	1 pulse input for transmitter pulse, activation through open collector npn < 1.5 V: emitter active, > 3.5 V: emitter inactive
Pulse length	100 µs ... 10 ms
Pause length	≥ 50 x pulse length
Compliance with standards and directives	
Standard conformity	
Standards	EN 60947-5-2:2007+A1:2012 IEC 60947-5-2:2007 + A1:2012
Approvals and certificates	
UL approval	cULus Listed, General Purpose
CSA approval	cCSAus Listed, General Purpose
CCC approval	CCC approval / marking not required for products rated ≤36 V
Ambient conditions	
Ambient temperature	0 ... 50 °C (32 ... 122 °F)
Storage temperature	-40 ... 85 °C (-40 ... 185 °F)
Mechanical specifications	
Connection type	Connector M12 x 1 , 4-pin
Degree of protection	IP30
Material	
Housing	PBT
Mass	110 g

Connection

Standard symbol/Connection:

Emitter



Core colours in accordance with EN 60947-5-2.

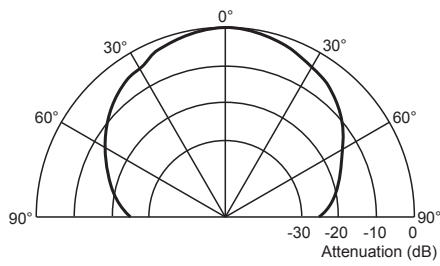
Connection Assignment

Connector V1

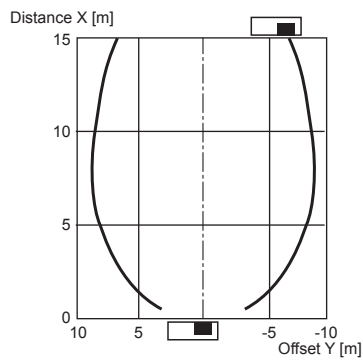


Characteristic Curve

Direction characteristics

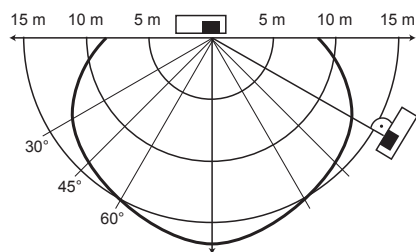


Characteristic response curve



Permissible distance (offset) between the optical axis of the emitter and receiver.

Characteristic response curve



Release date: 2020-03-20 Date of issue: 2021-02-05 Filename: 114519_eng.pdf

Refer to "General Notes Relating to Pepperl+Fuchs Product Information".

Pepperl+Fuchs Group
www.pepperl-fuchs.com

USA: +1 330 486 0001
fa-info@us.pepperl-fuchs.com

Germany: +49 621 776 1111
fa-info@de.pepperl-fuchs.com

Singapore: +65 6779 9091
fa-info@sg.pepperl-fuchs.com

Function

Function

The emitter is part of a complete system consisting of emitter, receiver and controller

Receiver: UBE15M-F54-H2-V1

Controller: UH3-16E4A-K15-R3

In real mode, the transmitter and receiver will not be not aligned to each other. This reduces the detection range that can be achieved.

The characteristic response curve to the side illustrates examples of the detection range of the system under the following operating conditions.

- The transmitter and receiver are arranged so they lie parallel opposite each other. The graph shows the detection range as a function of lateral offset.
- The receiver is arranged vertically downward, while the emitter is arranged in the direction of the receiver. The graph shows the detection range as a function of the angle of incidence.

This makes it possible to evaluate the detection range of the system as a function of the positioning of the transmitter and receiver for conditions that will occur in practical usage.



Cable sockets with built-in indicator LEDs must not be used to connect this device!