



CONNOR-WINFIELD CORPORATION

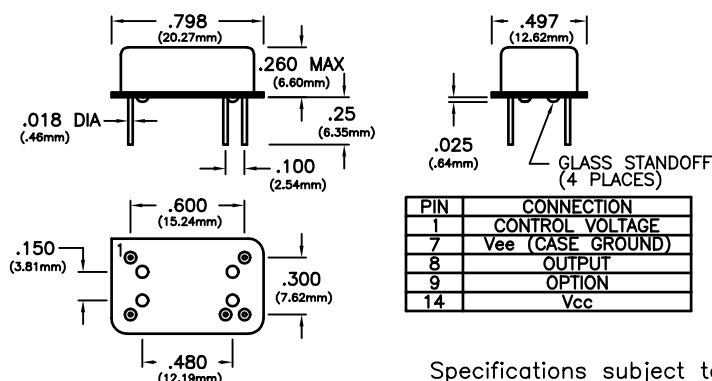
AURORA, IL. 60505

PHONE (630) 851-4722

FAX (630) 851-5040

14 PIN DIP PLL PECL VCXO

| | |
|--|--|
| SPECIFICATIONS | GV23-55* |
| Frequency | 155.52MHz |
| Operating Temp Range | 0°C to +70°C |
| Storage Temp Range | -55°C to +125°C |
| Frequency Stability | |
| Vs Calibration @ 25°C, 2.5V pin 1 (Reference to 155.52 MHz) | ±15ppm |
| Vs Operating temp range, 2.5V pin 1 (Reference to frequency @ 25°C, 2.5V pin 1) | ±10ppm |
| Waveform | PECL Squarewave , 100K Compatible |
| Voltage Voh | 4.0V Minimum , 4.5V Maximum |
| Vol | 2.9V Minimum , 3.4V Maximum |
| Symmetry | 45/55 Maximum measured at 50% level |
| Rise/Fall Time | 750pS Maximum |
| Jitter | 10pS rms Maximum |
| | Output must be terminated into 50 Ohms to +3Vdc |
| Frequency Control | Positive Transfer Characteristic |
| Control Voltage | 0 to 5V |
| Deviation @25°C | ±75ppm Minimum , ±140ppm Maximum |
| Center Frequency | 2.5Vdc ±0.5Vdc |
| Linearity | < ±10% |
| Input Impedance | > 50K Ohms @ < 10 KHz |
| Supply Voltage | +5Vdc ±10% |
| Supply Current | 100mA Maximum |
| Package | All metal, hermetically sealed, welded package |
| Options * | 1 Pin 9: Complementary Output |
| (add letter to end of model number) | 2 Pin 9: Enable/Disable Enable: Low Level (Vil) , Disable: High Level (Vih) NOTE: When oscillator is disabled the output is in a low state (Vol) |



Specifications subject to change without notice

BULLETIN #: GA021

REV: 00

Dimensional Tolerance: ±.02"
±.005"

PAGE 1 OF 2

DATE: 1/16/98

ISSUED BY: _____



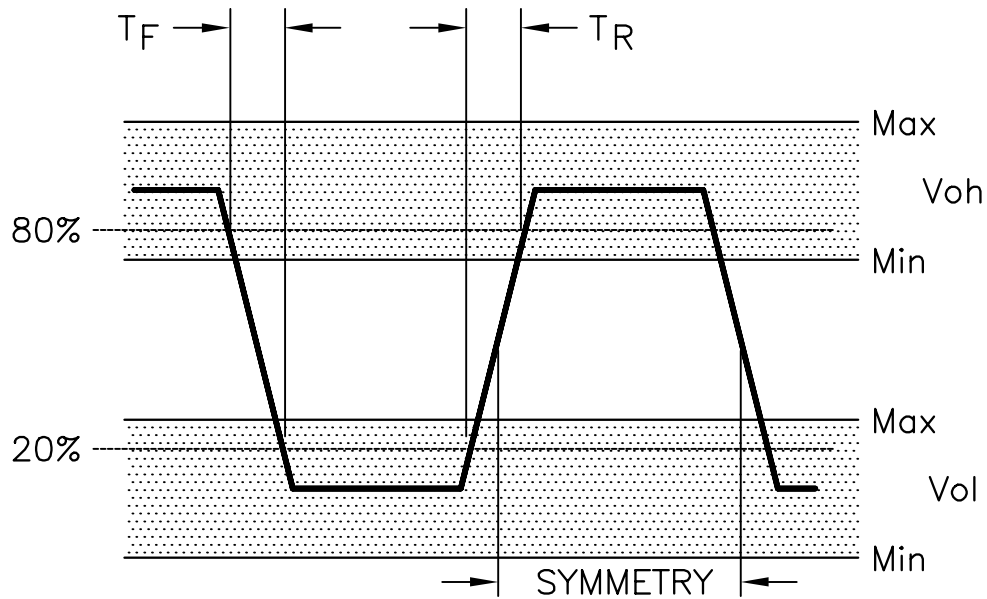
CONNOR-WINFIELD CORPORATION

AURORA, IL. 60505

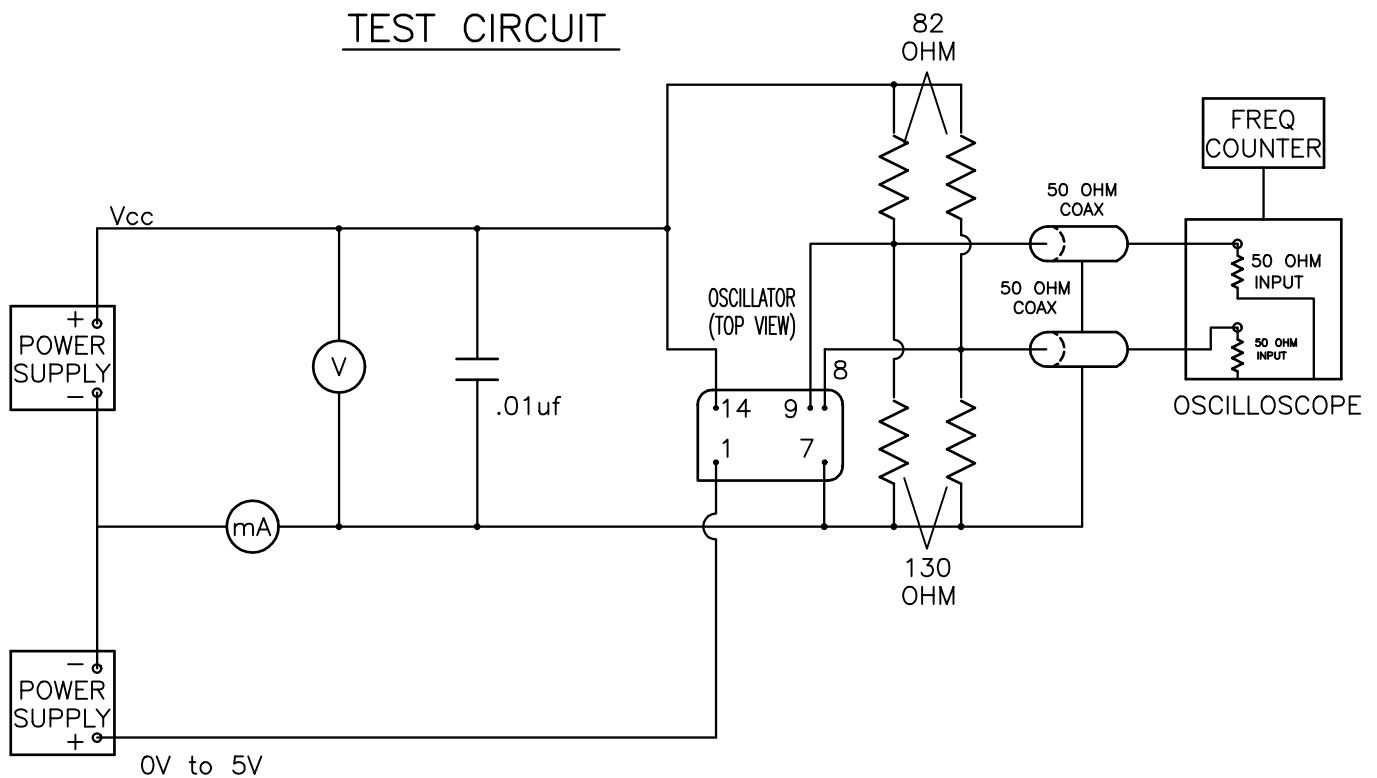
PHONE (630) 851-4722

FAX (630) 851-5040

OUTPUT WAVEFORM



TEST CIRCUIT



Specifications subject to change without notice

BULLETIN #: GA021
PAGE 2 OF 2

REV: 00
DATE: 1/16/98

ISSUED BY: _____