

Operation: SMT/立贴式 大型 轻触开关 [柄长/操作力可定制]



LTEM NO.: TS-1103S-□□ (Series)

(L12.0×W12.0 TACT-SWITCH)

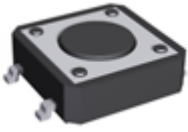
表面贴装 SMT

正向操作

精密部品 NICETY

可靠 STABILIZE

適合環保 RoHS

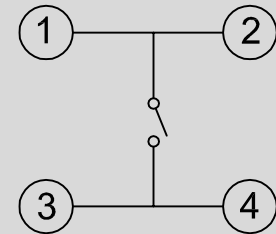


Technical parameter

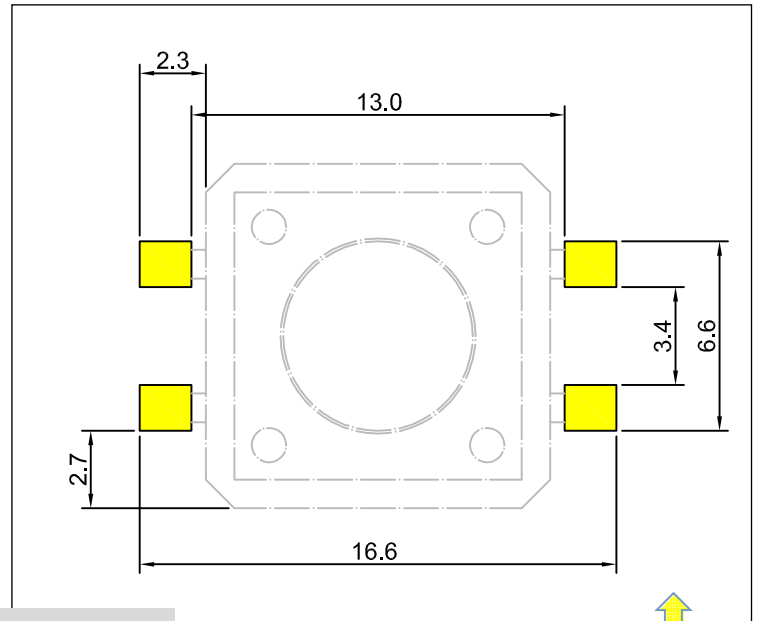
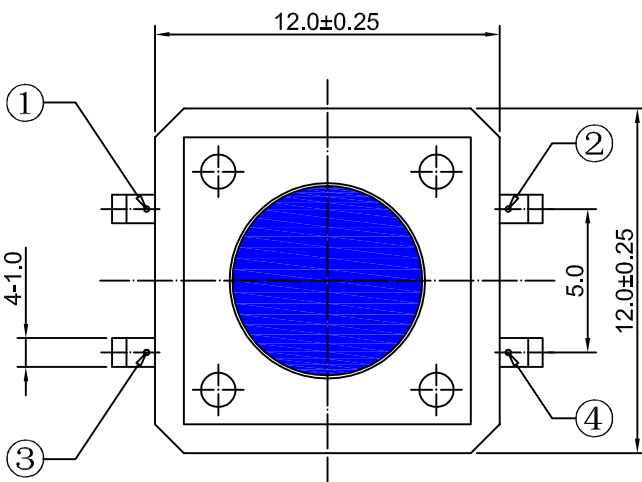
PROJECT	LEVEL	A[better product]	B[average product]
Electrical	Contact Rating	0.5A, 24V DC	
Properties	Initial Contact Resistance	50mΩ max.	
Durable Performance	Insulation Resistance	100MΩ min.500V DC	Skey/PD: 100MΩ min.300V DC
	Withstand Voltage	500V AC for 1 minute	350 V AC for 1 minut
Durable Performance	There No Load	115,000 Cycles	100,000 Cycles
	Rated Load	100,000 Cycles	850,000 Cycles
	Storage temp.	-40℃~+85℃(Operating Temp:)	
	Operating Force	1.6 / 2.6N. (1N.=100gram-force)	
	Heat Rrsistance	IR Reflow:255℃, 5sec. Manual:350℃, 3sec.	

Material declaration		
No.	NAME	Description
① A	拨柄	PA6T (Black)耐热塑料
② B	基座	PA6T (Black)耐热塑料
③ C	盖板	不锈钢 Q235-A
④ D	簧片	镀银&磷青铜 C5191/不锈钢 SUS304
⑤ E	嵌件	镀银&C5191R-H 磷青铜(镀锡)

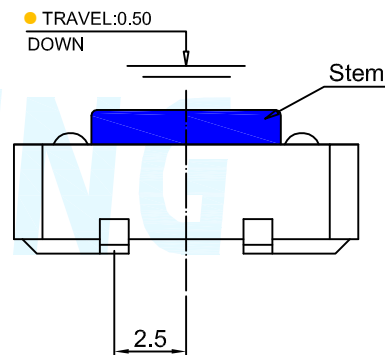
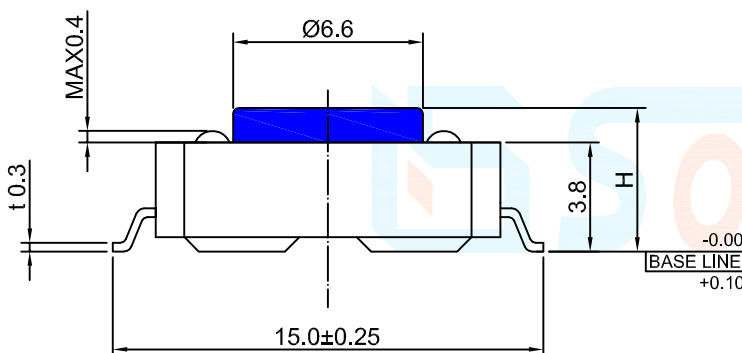
CIRCUIT DIAGRAM



Unit:mm



P.C.B LAYOUT



H
4.3
5.0
5.5
6.0
6.5
~
16.0