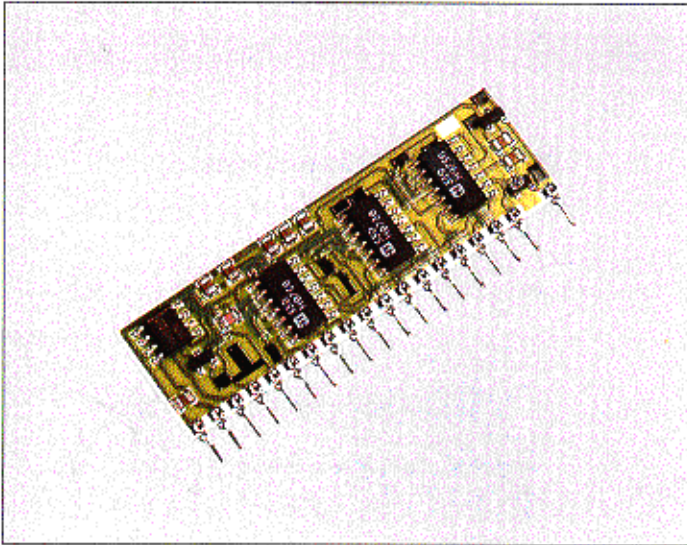




SM1

Sound level meter



General description

The SM1 is a high performance sound level meter with twelve led drivers.

Design for professional audio mixers and other audio applications.

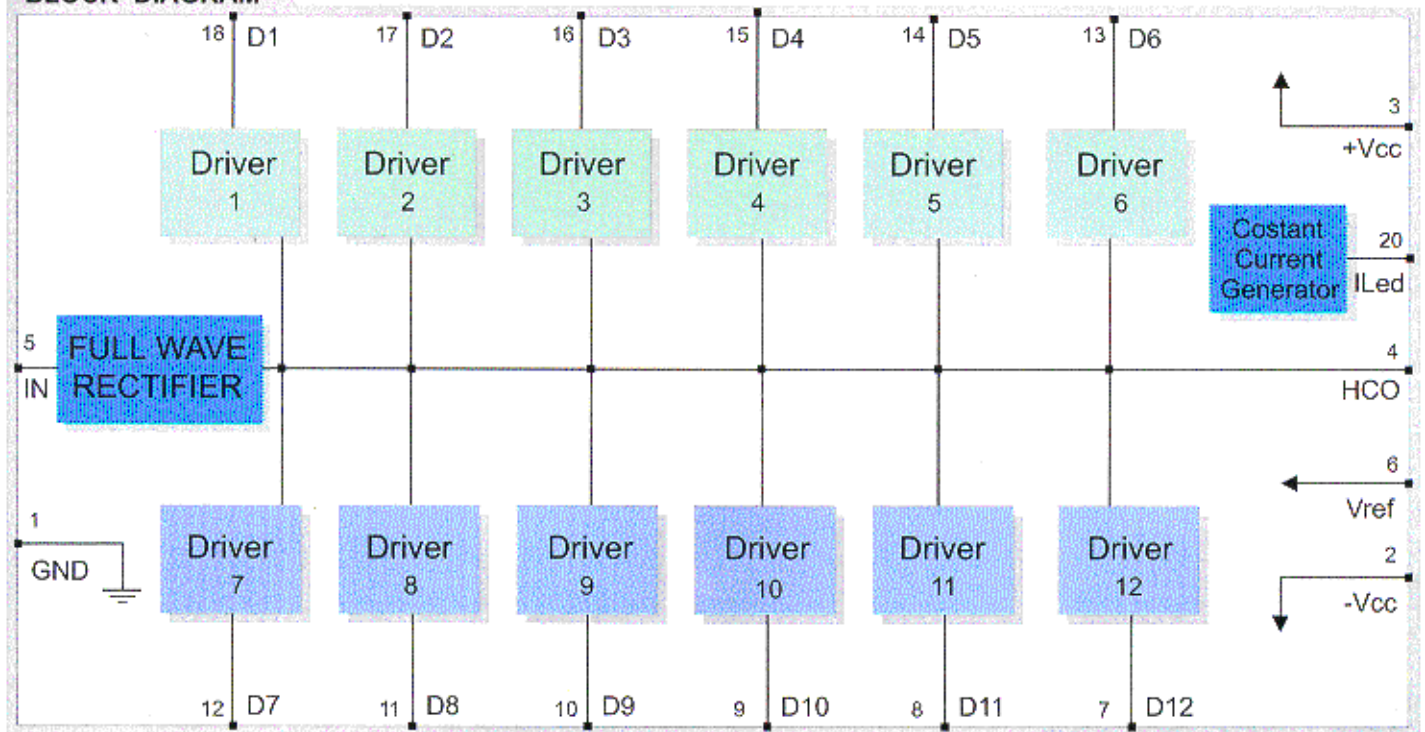
Features

- Internal full wave audio rectifier
- Costant current led driver
- SIL Package
- Thick film hybrid technology

Applications

- Fine Musical Instruments
- Guitar / Keyboard Amplifier
- Audio Mixer
- Karaoke Systems

BLOCK DIAGRAM



Electrical Characteristics

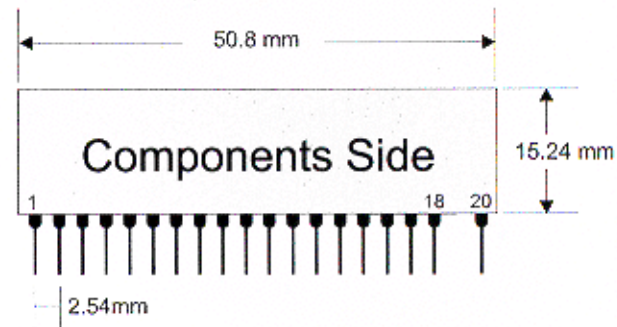
Ta = 25°C unless otherwise specified

	CHARACTERISTICS	MIN	TYP	MAX	UNIT
V _{CC}	Supply Voltage	±9	±12	±15	VDC
I _s	Supply Current (V _{CC} = ±15)		25		mA
L _i	Level Indicator	-21		+9	dB
T _{OP}	Operating Temperature Range	-20		+80	°C

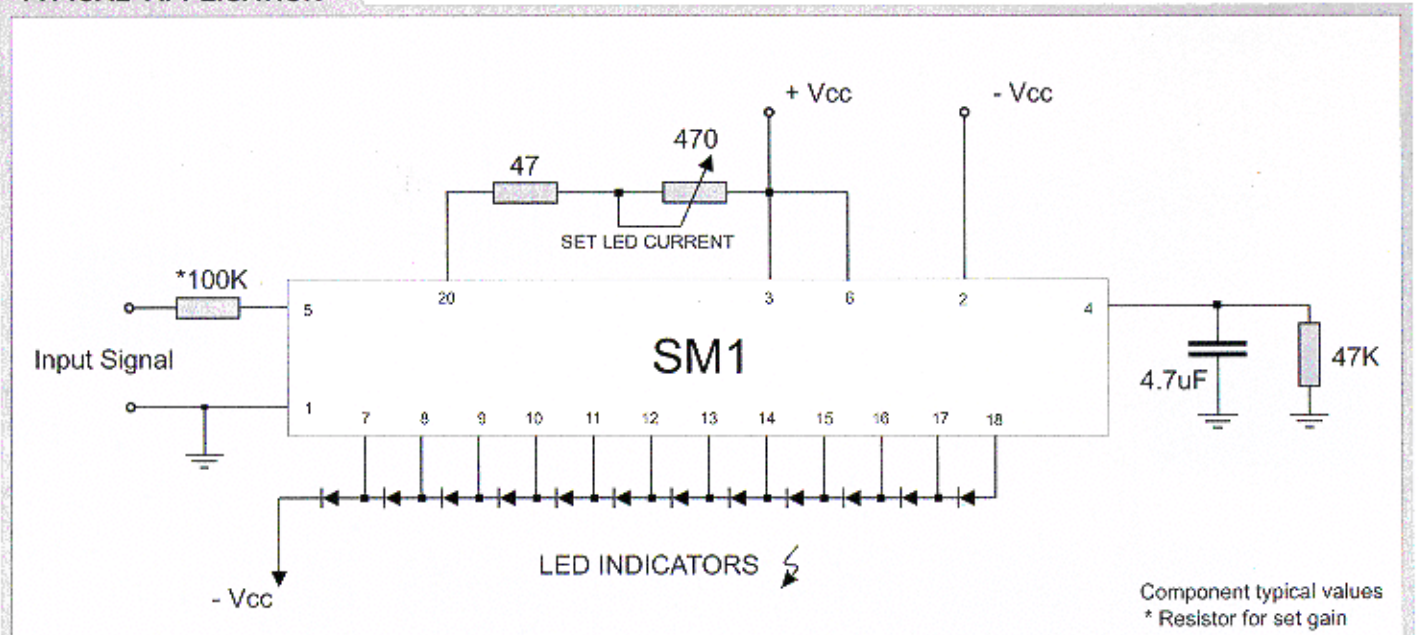
Pin Description

1	GND	Ground
2	-VCC	Negative Supply Voltage
3	+VCC	Positive Supply Voltage
4	HCO	Hold Capacitor Output
5	IN	Input Signal
6	Vref	Voltage Reference Comparator
7	D12	Output led 12
8	D11	Output led 11
9	D10	Output led 10
10	D9	Output led 9
11	D8	Output led 8
12	D7	Output led 7
13	D6	Output led 6
14	D5	Output led 5
15	D4	Output led 4
16	D3	Output led 3
17	D2	Output led 2
18	D1	Output led 1
20	ILed	Led Current Set

Mechanical Dimensions



TYPICAL APPLICATION



R. F. Solutions Ltd.,
Unit 21, Cliffe Industrial Estate,
South Street,
Lewes.

E Sussex, BN8 6JL, England.

Tel +44 (0)1273 898 000. Fax +44 (0)1273 480 661.

Email sales@rfsolutions.co.uk <http://www.rfsolutions.co.uk>

RF Solutions is a member of the Low Power Radio Association.