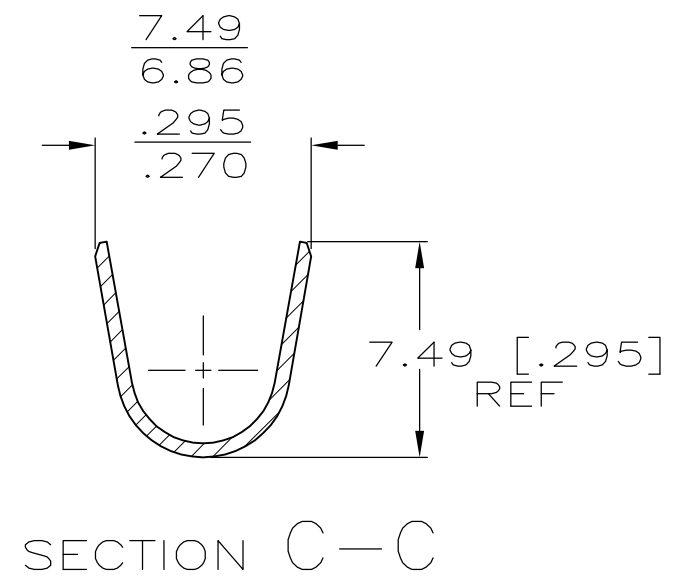
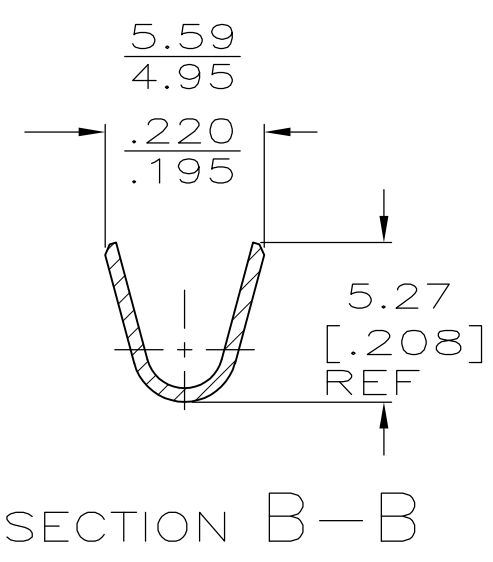
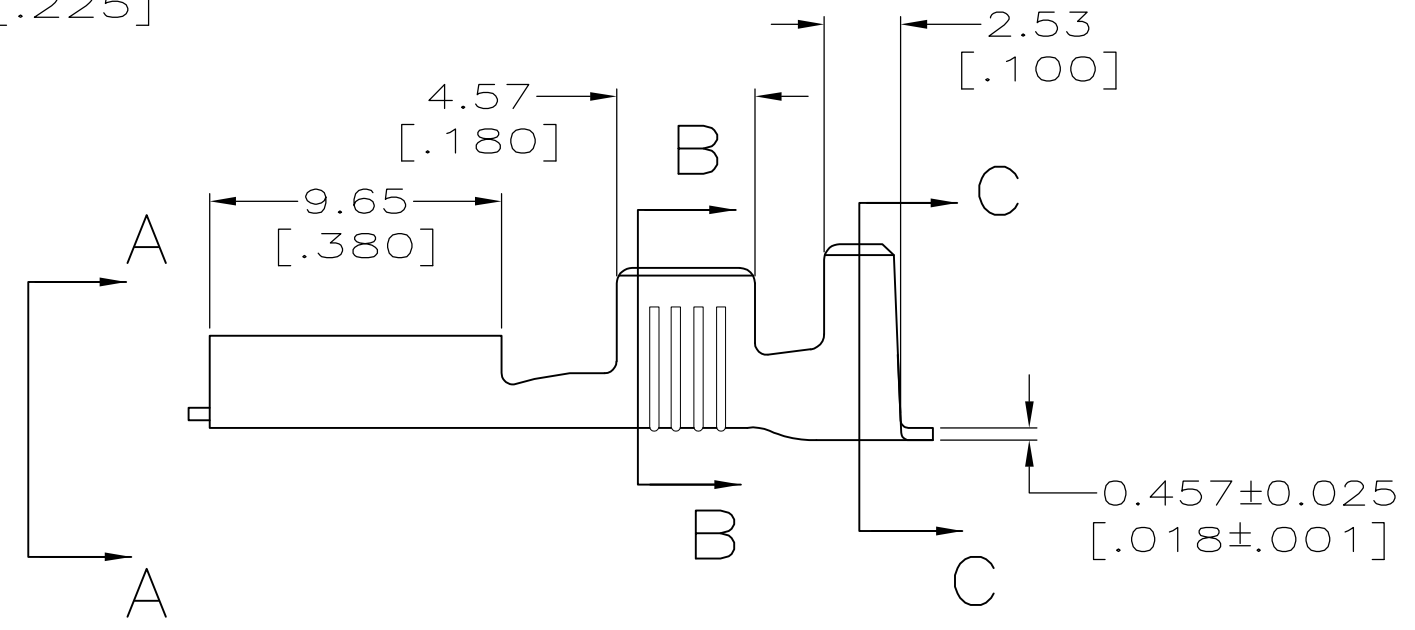
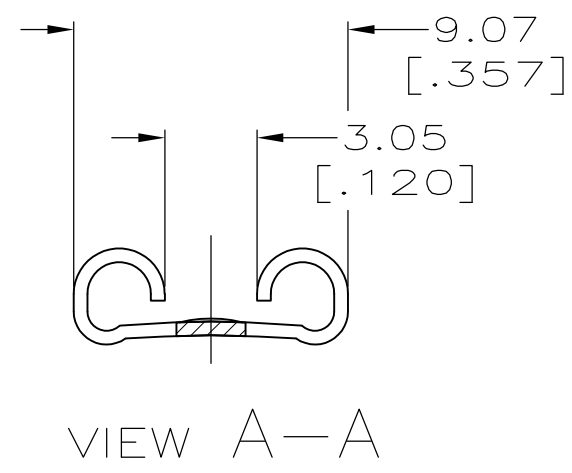
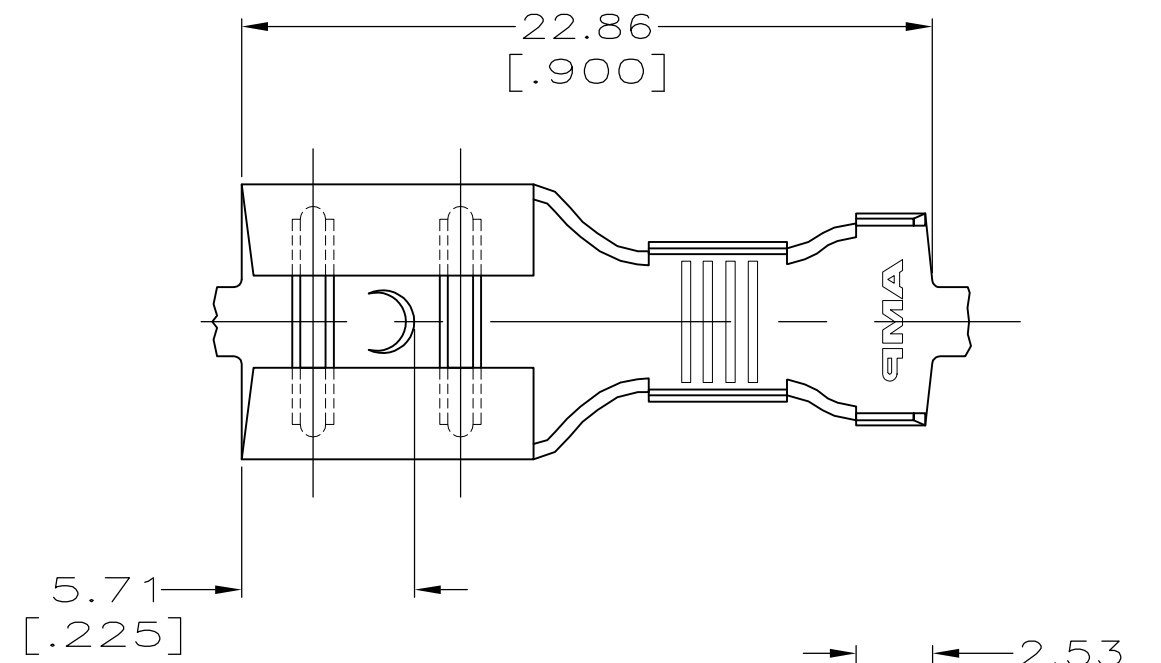


THIS DRAWING IS UNPUBLISHED. RELEASED FOR PUBLICATION
 © COPYRIGHT - By - ALL RIGHTS RESERVED.

LOC	DIST	REVISIONS					
AF	50	P	LTR	DESCRIPTION	DATE	DWN	APVD
			F	REVISED PER ECR-12-013518	24NOV12	KH	PD

- 1 CONTINUOUS STRIP ON REELS
- 2 WIRE SIZE IS #14-#10 AWG
- 3 INSULATION RANGE IS 3.81-5.08 [.150-.200] DIA.
- 4 MATING TAB THK IS 0.81±0.025 [.032±.001]
- △5 PRELIMINARY - NOT FOR PRODUCTION



TIN	△5 63820-3
0.00381 [.000150] MIN SILVER	63820-1
FINISH	PART NO.

F	6.35 [.250]	6.40 [.252]	F	3.56 [.140]	1.98 [.078] 2.29 [.090] 2.74 [.108]	[#14] [#12] [#10]
TYPE	WIDTH	STRIP LENGTH ±0.38 ±[.015]	TYPE	WIDTH	±0.051 ±[.002] HEIGHT	WIRE
INSUL BARREL CRIMP			WIRE BARREL CRIMP			

THIS DRAWING IS A CONTROLLED DOCUMENT.	
DIMENSIONS: mm [INCHES]	TOLERANCES UNLESS OTHERWISE SPECIFIED:
	0 PLC ± - 1 PLC ± - 2 PLC ± 0.25 [.010] 3 PLC ± - 4 PLC ± - ANGLES ± -
MATERIAL BRASS	FINISH SEE TABLE

DWN JR RUTH 11/3/94	TE Connectivity NAME RECEPTACLE, FASTON, 7.92 [.312] SERIES	SIZE	CAGE CODE	DRAWING NO	RESTRICTED TO	
CHK MS FEHER 11/3/94		A3	00779	C-63820	-	
APVD J GILLESPIE 11/3/94		114-2036	SCALE	4:1	SHEET	1 OF 1
PRODUCT SPEC	APPLICATION SPEC	WEIGHT	-	CUSTOMER DRAWING	REV	F