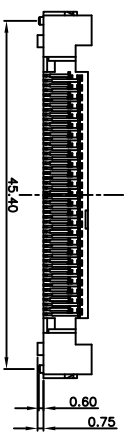
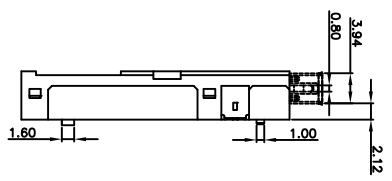
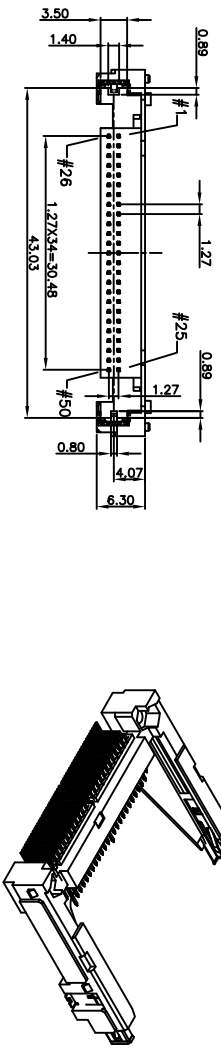
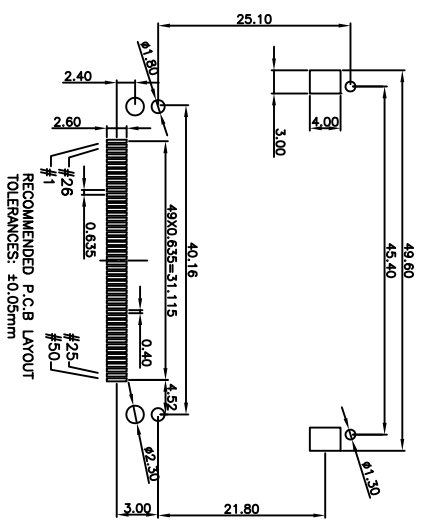


Rev	AWO #	Description	Date	Appr
-		RELEASED	9/11/09	

APPROVED: _____
 DATE: _____ TITLE: _____



POWER	5.00mm	1, 13, 38, 50
GENERAL	4.25mm	all other pins
DETECT	3.50mm	25, 26
Pin type	Interface Dim. L	Pin No.



UNLESS OTHERWISE SPECIFIED	
ALL DIMENSIONS ARE MM	
TOLERANCES: EXCEPT AS NOTED	
INCHES	
.X ± .10	ØX ± .10
.XX ± .020	ØXX ± .015
.XXX ± .015	ØXXX ± .010
APPROVALS	DATE
DRAWN	DY
CHECKED	
APPROVED	

ADAM TECH

909 Rahway Avenue, Union, NJ 07083
 Phone: 908-687-5000 Fax: 908-687-5710

TITLE: CF TYPE I / II SOCKET
 REVERSE MOUNT, W/ GROUNDING

SIZE: X
 PART NO.: CF2A-50-SG-R
 REF: S00037
 SCALE: NTS
 SHEET 1 OF 1

SPECIFICATIONS:
 Material: Insulator: Thermal Plastic, rated UL 94V-0
 Contact: Copper Alloy
 Shell: Copper Alloy
 Plating: Gold flash over Nickel underplate on contact area, Tin over copper underplate on tails.
 Electrical: Operating Voltage: 100 VACmax
 Current rating: 0.5 Amp max
 Contact resistance: 40 mohms max
 Insulation resistance: 1,000 Mohms min
 Dielectric withstanding voltage: 500 VAC for 1 minute
 Temperature Rating: Operating temperature: -20°C to +90°C
 Environmental: Lead free, RoHS compliant
 Recommended soldering temp: 260°C for 5 seconds

