

AFS315.0W01-TS3 SMD 315.0MHz SAW Filter



AFS315.0W01-TS3

Moisture Sensitivity Level: N/A (Hermetically sealed package)



RoHS Compliant

FEATURES:

- Low Insertion Loss 3.0dB typical
- Compact SMD package 3.8 x 3.8 x 1.25mm
- Suitable for RoHS compliant reflow
- Industrial wide temp range -45°C to +85°C

APPLICATIONS:

- Wireless car alarm, Garage door opener, RKE
- Mobile Communications systems
- Remote controller
- RF receiver

STANDARD SPECIFICATIONS:

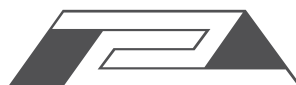
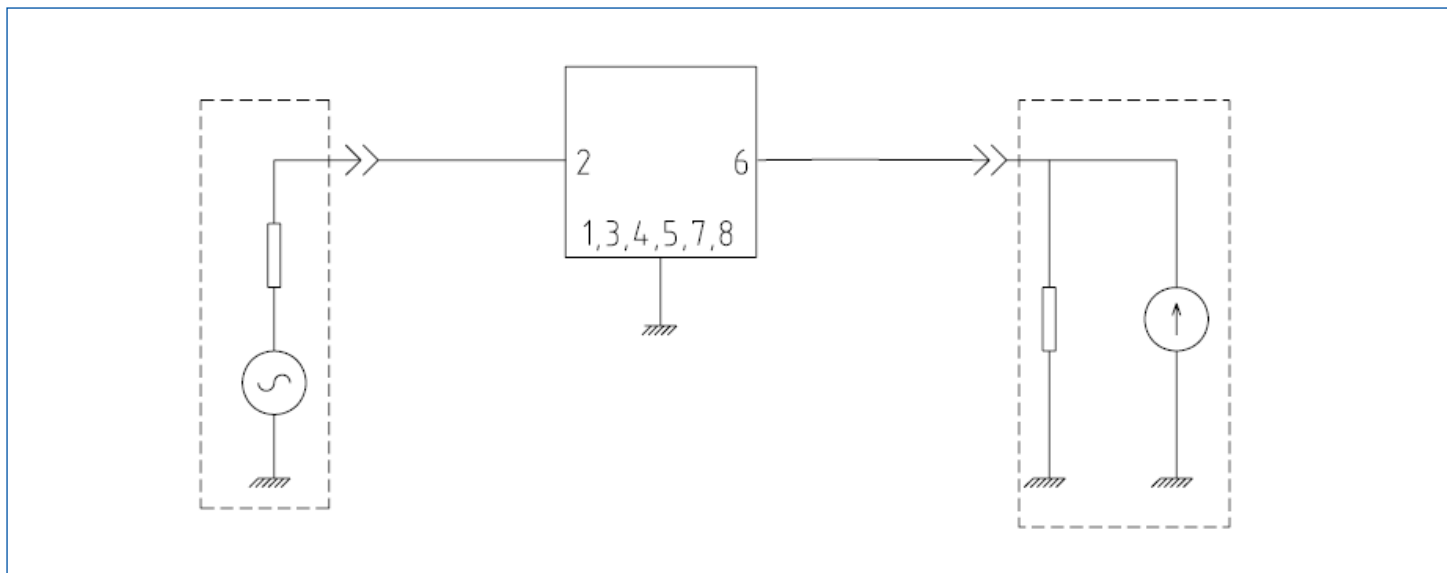
Maximum Ratings

Item	Value
Operating Temperature Range	-40°C to +85°C
Storage Temperature Range	-45°C to +85°C
DC Voltage	0V DC max.
Maximum Input Power	0 dBm

Electrical Characteristics

Parameters	Minimum	Typical	Maximum	Units	Notes
Center Frequency (f_0)	-----	315.0	-----	MHz	
Insertion Attenuation	-----	2.0	3.0	dB	314.0 ~ 316.0MHz
Amplitude Ripple	-----	-----	1.5	dB	314.0 ~ 316.0MHz
Relative Attenuation	40	-----	-----	dB	$f_0-25.0 \sim f_0-10.0$ MHz
	50	-----	-----		$f_0-100.0 \sim f_0-40.8$ MHz
	50	-----	-----		$f_0+40.8 \sim f_0+100.0$ MHz
Temperature Coefficient of Frequency	-----	-30	-----	ppm/k	
Terminating Impedance	-----	50Ω/0pF	-----		

TEST CIRCUIT



AFS315.0W01-TS3 SMD 315.0MHz SAW Filter

AFS315.0W01-TS3

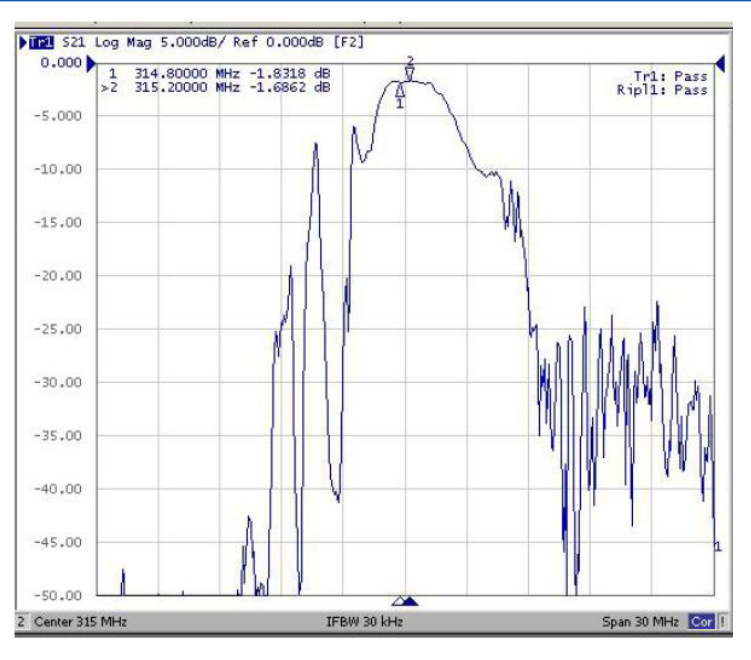
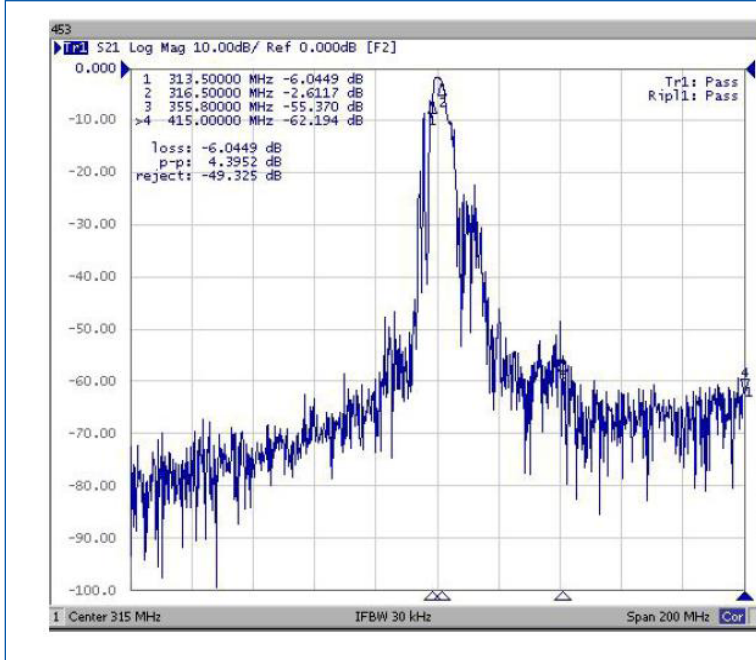


RoHS

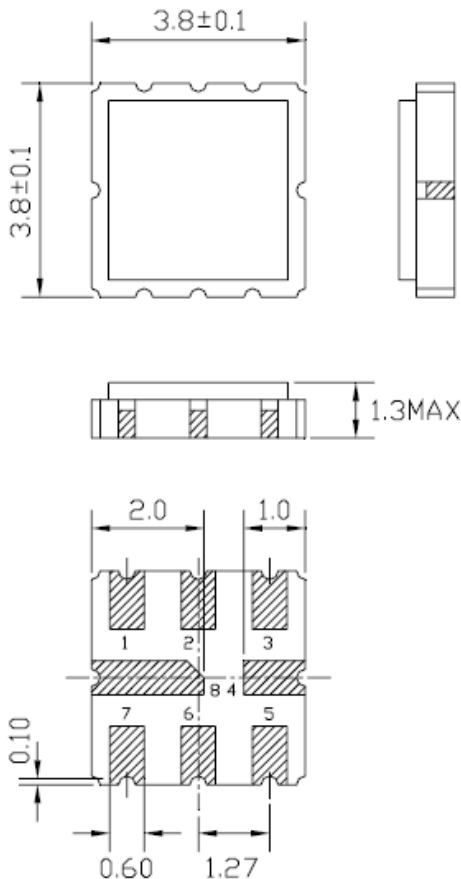


3.8 x 3.8 x 1.3 mm

FREQUENCY CHARACTERISTIC



OUTLINE DIMENSION:



Pin No.	Function
Pin 2	Input
Pin 6	Output
Other	Ground

Dimensions: mm

AFS315.0W01-TS3 SMD 315.0MHz SAW Filter

AFS315.0W01-TS3



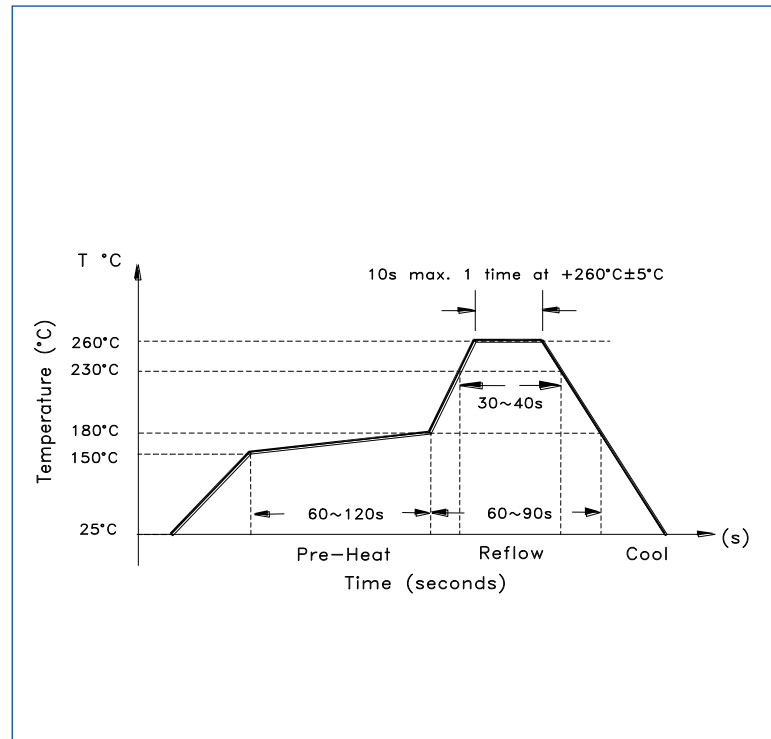
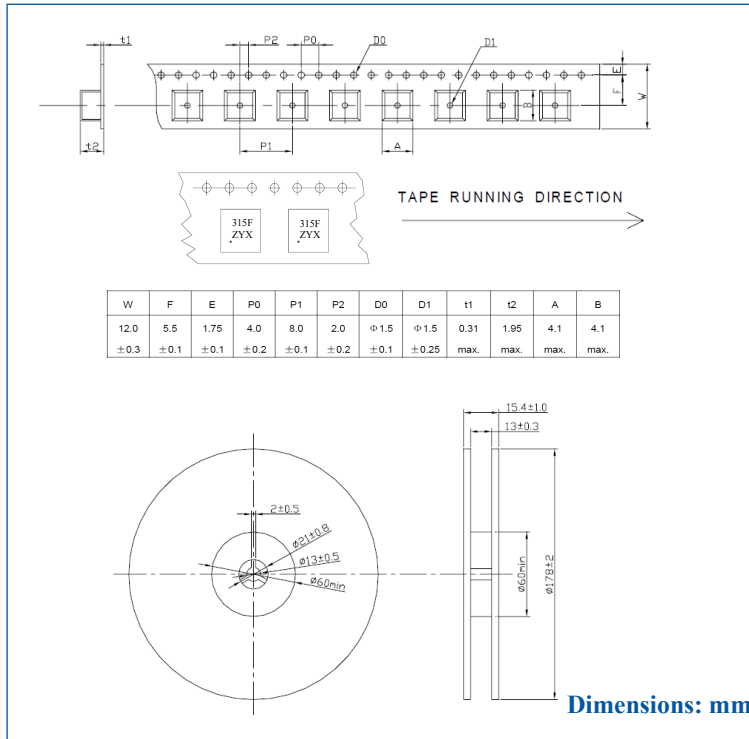
RoHS



3.8 x 3.8 x 1.3 mm

PACKAGING: 1000pcs/reel

REFLOW PROFILE



CAUTION:

- **Static voltage**
Static voltage between signal load & ground may cause deterioration & destruction of the component. Please avoid static voltage.
- **Ultrasonic cleaning**
Ultrasonic vibration may cause deterioration & destruction of the component. Please avoid ultrasonic cleaning.
- **Soldering**
Only leads of component may be soldered. Please avoid soldering another part of component.

ATTENTION: Abracon Corporation's products are COTS – Commercial-Off-The-Shelf products; suitable for Commercial, Industrial and, where designated, Automotive Applications. Abracon's products are not specifically designed for Military, Aviation, Aerospace, Life-dependant Medical applications or any application requiring high reliability where component failure could result in loss of life and/or property. For applications requiring high reliability and/or presenting an extreme operating environment, written consent and authorization from Abracon Corporation is required. Please contact Abracon Corporation for more information.

ABRACON IS
ISO 9001:2008
CERTIFIED

Visit www.abracon.com for Terms & Conditions of Sale
30332 Esperanza, Rancho Santa Margarita, California 92688
tel 949-546-8000 | fax 949-546-8001 | www.abracon.com

Revised: 08.11.11