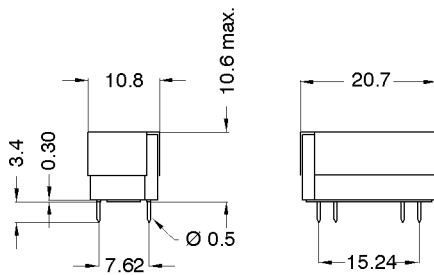


DIMENSIONS (mm)



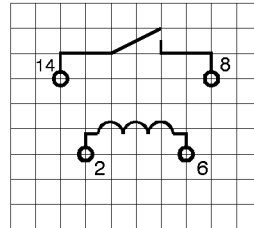
Pins: Ø 0.5 mm
 L = 3.4±0.3 mm
 Material: Cu-alloy tinned



tolerances according to DIN ISO 2768 m

LAYOUT

pitch 2.54 mm/Top view



MARKING



MEDER-Label
 Type
 Production code,
 EN60062/Factory code

| Coil Data at 20 °C | Conditions | Min | Typ | Max | Unit |
|--------------------|------------|------|-----|------|------|
| Coil resistance | | 13,5 | 15 | 16,5 | Ohm |
| Coil current | | | | 357 | mA |
| Coil voltage | | | 20 | | mA |
| Pull-In voltage | | | | 15 | mA |
| Drop-Out voltage | | 5 | | | mA |

| Contact data 66 | Conditions | Min | Typ | Max | Unit |
|----------------------------|---|-----|-----|------|------|
| Contact rating | Any DC combination of V & A not to exceed their individual max.'s | | | 5 | W |
| Switching voltage | DC or Peak AC | | | 90 | VDC |
| Switching current | DC or Peak AC | | | 0,5 | A |
| Carry current | DC or Peak AC | | | 1,25 | A |
| Contact resistance static | Measured with 40% overdrive Start Value | | | 150 | mOhm |
| Insulation resistance | RH <45 %, 100 VDC test voltage | 10 | | | GOhm |
| Breakdown voltage (<21 AT) | according to IEC 255-5 | 200 | | | VDC |
| Operate time incl. bounce | measured with 40% overdrive | | | 0,5 | ms |
| Release time | measured with no coil excitation | | | 0,1 | ms |

| Contact data 66/1 | Conditions | Min | Typ | Max | Unit |
|-------------------|------------|-----|-----|-----|------|
| Capacity | | | 0,3 | | pF |

| Special Product Data | Conditions | Min | Typ | Max | Unit |
|----------------------|------------|-----|----------------------------|-----|------|
| Housing material | | | PBT glass fibre reinforced | | |
| Remarks | | | with metal shielding | | |
| Sealing compound | | | Polyurethan | | |

| Environmental data | Conditions | Min | Typ | Max | Unit |
|------------------------------------|-------------------------------|-----|-----|-----|-------|
| Insulation resistance Coil/Contact | RH <45%, 200 VDC Messspannung | 10 | | | GOhm |
| Insulation voltage Coil/Contact | gemäß IEC 255-5 | 4 | | | kV DC |
| Shock | 1/2 sine wave duration 11ms | | | 50 | g |
| Vibration | from 10 - 2000 Hz | | | 20 | g |
| Ambient temperature | | -20 | | 70 | °C |
| Storage temperature | | -25 | | 85 | °C |

Modifications in the sense of technical progress are reserved

Designed at: 12.11.07 Designed by: Approval at: 12.11.07 Approval by:
 Last Change at: Last Change by: Approval at: Approval by:



Products for tomorrow...

Europe: +49 / 7731 8399 0 | Email: info@meder.com
USA: +1 / 508 295 0771 | Email: salesusa@meder.com
Asia: +852 / 2955 1682 | Email: salesasia@meder.com

Item No.:
1316615013
Item:
DIL-CL-1A66-15-13M

| Environmental data | Conditions | Min | Typ | Max | Unit |
|-----------------------|------------------------|--------------|-----|-----|------|
| Soldering temperature | Wellenlöten max. 5 sec | | | 260 | °C |
| Cleaning | | fully sealed | | | |

Modifications in the sense of technical progress are reserved

Designed at: 12.11.07

Designed by:

Approval at: 12.11.07

Approval by:

Last Change at:

Last Change by:

Approval at:

Approval by:

Version: 01