

HIRSCHMANN MOBILITY



CELLULAR (2G/3G)/ GNSS (GPS/GLONASS) Adhesive Antenna

CGN 1890 LP LC P/series

Pt no.

602-440-...

- Reception antenna for satellite signals (GLONASS and GPS) for processing in navigation systems, fleet management systems, traffic guidance systems and vehicle location in combination with low profile cellular phone antenna
- Low body height ca. 20mm / 0.79 in.
- Coverage of European and American cellular phone frequencies
- Mounting on several surfaces (e.g. glass, plastics, metal ...)

Subject to alterations

Technical data

Dimensions (without rod)	102 mm x 66 mm x 20 mm
Weight	-001 / -004: 165 g -002 / -003: 219 g -005: 215 g -006: 139 g
Temperature range	-40 – +85°C
Protection class	IP66 (acc. IEC 60529)
Cable type	RG 174
Cable length	-001 / -004 / -006: 3000 +30 mm -002: 4700 +50 mm -003 / -005: 5000 +50 mm

GNSS

Frequency range	GLONASS: 1602,0 - 1614,94 MHz GPS: 1,57542 GHz ± 1,023 MHz, (L1-band)
Impedance	50 Ohm
VSWR	≤ 2,0
Gain	1 dBic ⁽¹⁾
Amplification	27 ± 1 dB
Noise figure (50 Ohm)	≤ 1,4 dB
Voltage supply	2,7 – 5,5 VDC (remotely fed)
Current consumption	typ. 13 mA at 5 VDC
Connector	-001 / -002 / -005 / -006: SMA male -003 / -004: FAKRA female, Code C, blue

Cellular

Frequency range	GSM 850: 824 – 894 MHz GSM 900: 880 – 960 MHz GSM 1800: 1710 – 1880 MHz GSM 1900: 1950 – 1990 MHz UMTS: 1920 – 2170 MHz
Impedance	50 Ohm
VSWR	≤ 2,0
Gain	0 dBi ⁽²⁾
Load capacity	max. 10 W pulsed acc. GSM standard
Diagnostic Resistor	10 kOhm

CELLULAR (2G/3G)/ GNSS (GPS/GLONASS) ADHESIVE ANTENNA

CGN 1890 LP LC P/series Pt no. 602-440-...

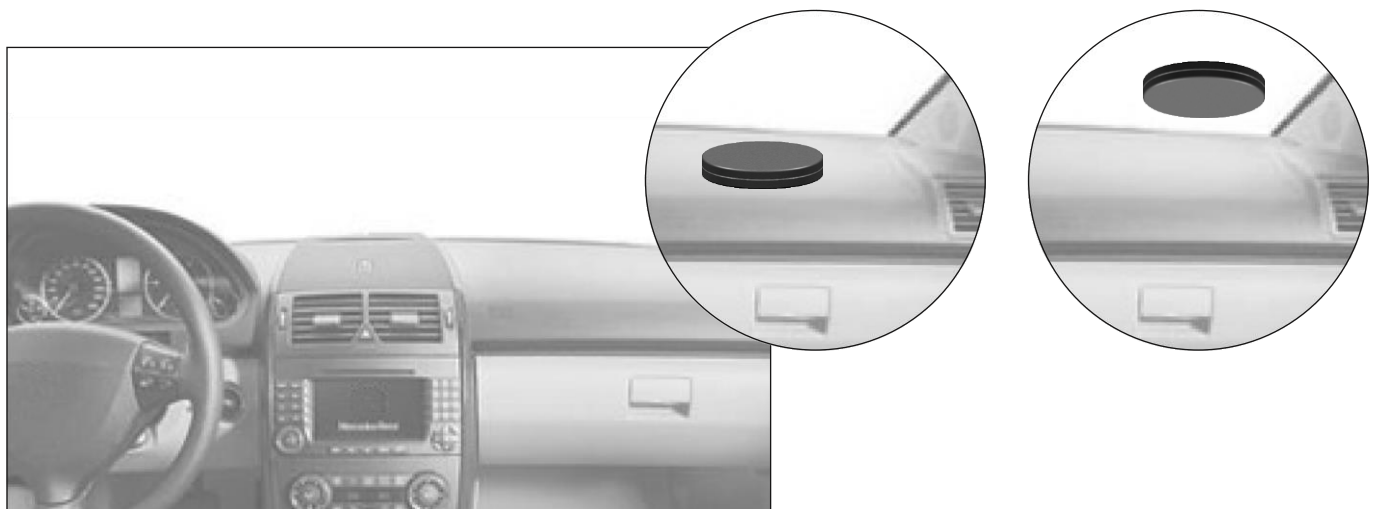
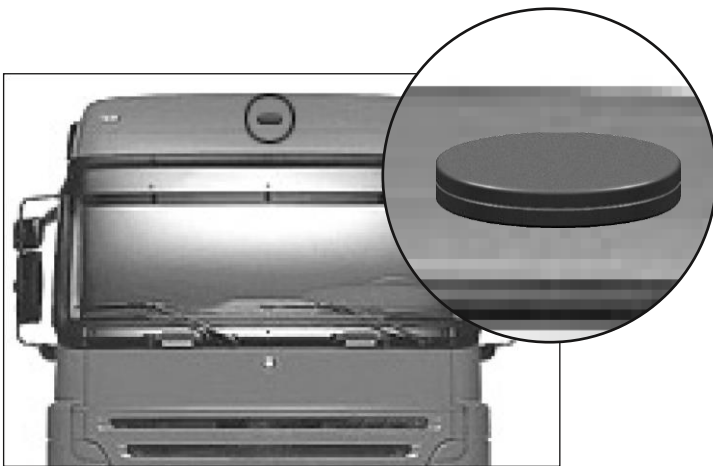
Connector

-001: FME female
-003 / -004: FAKRA female, Code D, bordeaux
-002 / -005 / -006: SMA male

¹⁾ dBi: referenced to an isotropic radiator, circular polarization

²⁾ dBi: referenced to an isotropic radiator

Installation



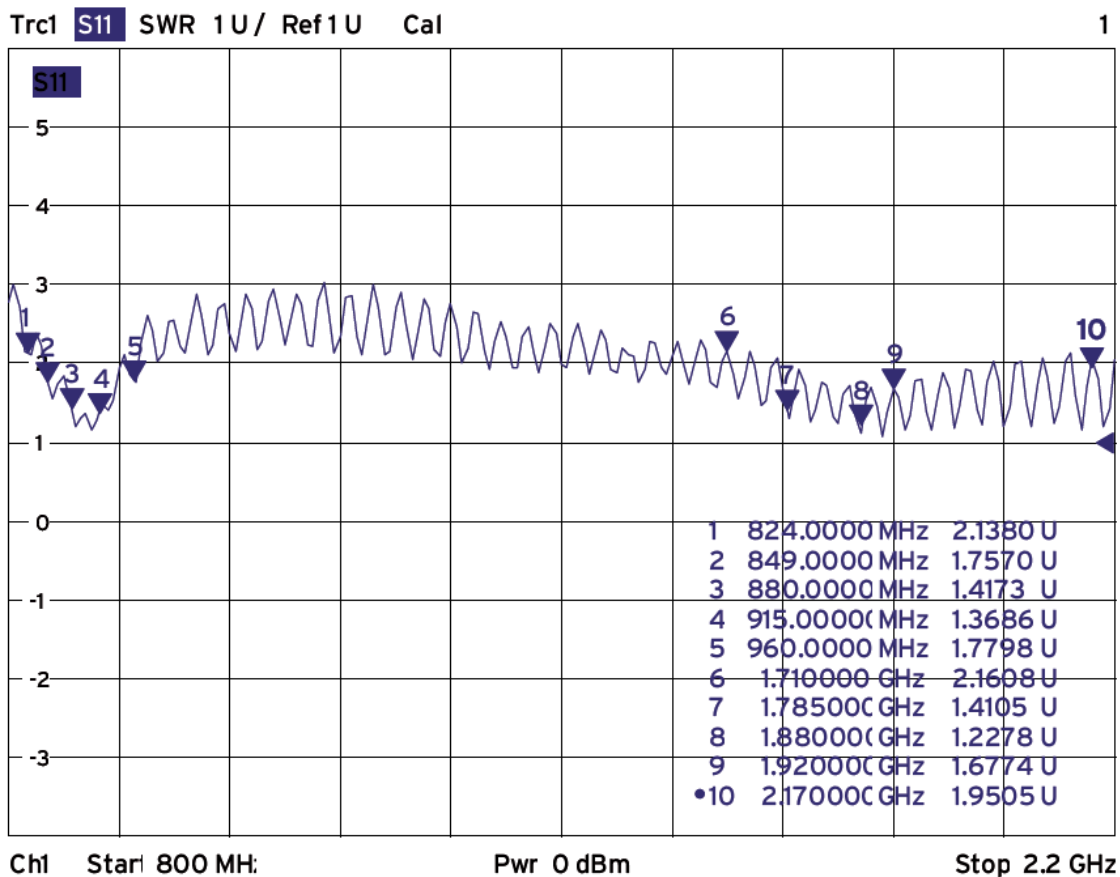
CELLULAR (2G/3G)/ GNSS (GPS/GLONASS) ADHESIVE ANTENNA

CGN 1890 LP LC P/series Pt no. 602-440-...

Subject to alterations

Antenna diagrams

Typ. VSWR

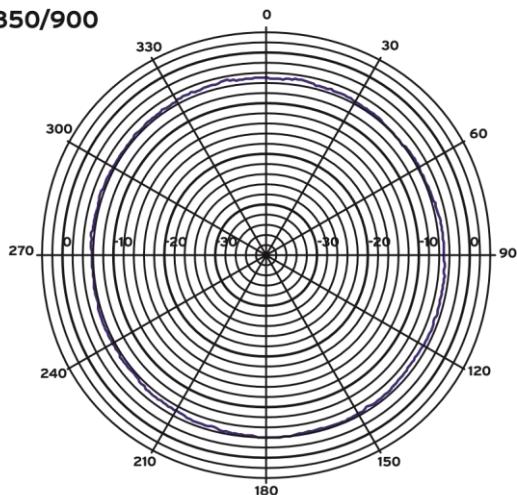


Subject to alterations

Antenna diagrams

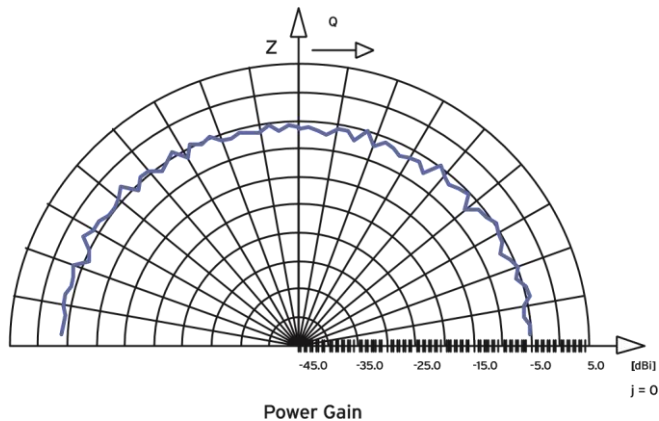
horizontal / Azimuth

GSM 850/900

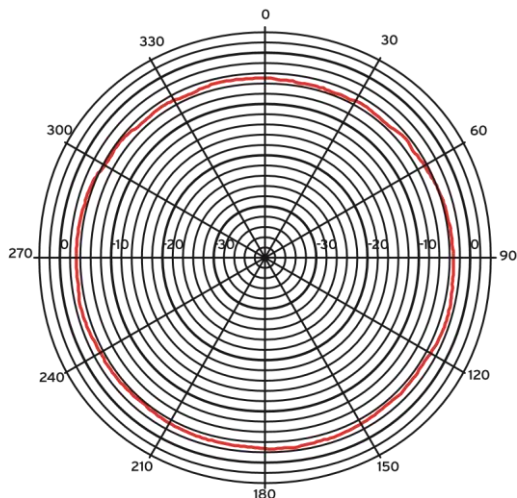


vertikal / Elevation

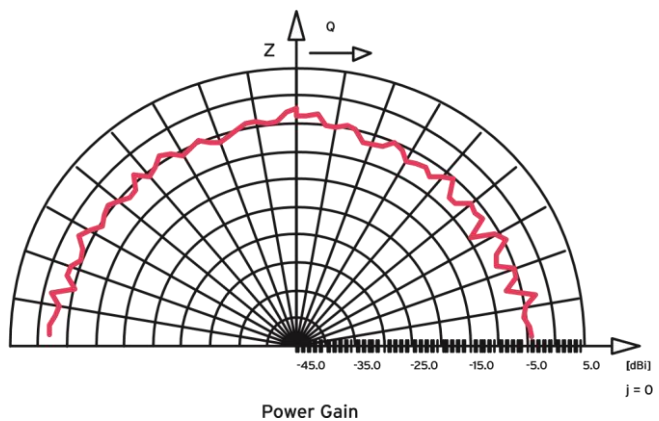
GSM 850/900



GSM 1800/UMTS



GSM 1800/UMTS



www.te.com/hirschmann-mobility

hirschmann-mobility@te.com

TE, TE Connectivity, TE connectivity (logo), and EVERY CONNECTION COUNTS are trademarks. Hirschmann is a trademark.

GSM, UMTS and GLONASS are trademarks.

The information given herein, including drawings, illustrations and schematics which are intended for illustration purposes only, is believed to be reliable. However, TE Connectivity makes no warranties as to its accuracy or completeness and disclaims any liability in connection with its use. TE Connectivity's obligations shall only be as set forth in TE Connectivity's Standard Terms and Conditions of Sale for this product and in no case will TE Connectivity be liable for any incidental, indirect or consequential damages arising out of the sale, resale, use or misuse of the product. Users of TE Connectivity products should make their own evaluation to determine the suitability of each such product for the specific application.

© 2019 TE Connectivity Ltd. family of companies All Rights Reserved.

