

## Features

- Complementary to SS8550
- Power dissipation of 300mW
- High stability and high reliability
- Meets MSL level 1, per J-STD-020, LF maximum peak of 260°C

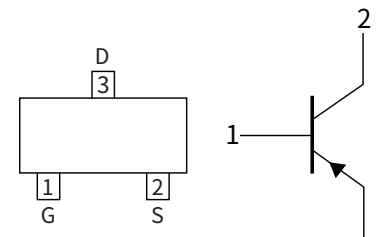
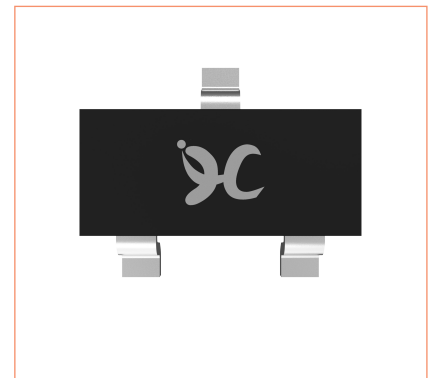
## Mechanical Data

- Case: SOT-23  
Molding compound meets UL 94V-0 flammability rating, RoHS-compliant, halogen-free
- Terminals: Solder plated, solderable per MIL-STD-750, Method 2026

## Classification Of $h_{FE}$

RANK	RANGE
L	120-200
H	200-350
J	300-400

## SOT-23



## Maximum Ratings (Ta=25°C Unless otherwise specified)

PARAMETER	SYMBOL	UNIT	VALUE
Collector-Base Voltage	$V_{CBO}$	V	-40
Collector-Emitter Voltage	$V_{CEO}$		-25
Emitter-Base Voltage	$V_{EBO}$		-5.0
Collector Current	$I_C$	A	-1.5
Collector Power Dissipation	$P_C$	mW	300
Storage temperature	$T_{stg}$	°C	-55 ~ +150
Junction temperature	$T_j$	°C	-55 ~ +150
Typical Thermal Resistance	$R_{\theta J-A}$	°C / W	417

## Electrical Characteristics (Ta=25°C Unless otherwise noted)

PARAMETER	SYMBOL	UNIT	Condition	Min	Max
Collector-Base Breakdown Voltage	$V_{(BR)CBO}$	V	$I_C = -100\mu A, I_E = 0$	-40	—
Collector-Emitter Breakdown Voltage	$V_{(BR)CEO}$		$I_C = -100\mu A, I_B = 0$	-25	—
Emitter-Base Breakdown Voltage	$V_{(BR)EBO}$		$I_C = -100\mu A, I_C = 0$	-5.0	—
Collector-Emitter cut-off current	$I_{CEO}$	nA	$V_{CE} = -20V$	—	-100
Collector-Base cut-off current	$I_{CBO}$		$V_{CB} = -40V$	—	-100
Emitter-Base cut-off current	$I_{EBO}$		$V_{EB} = -5.0V$	—	-100
DC Current Gain	$h_{FE(1)}$	—	$I_C = -100mA, V_{CE} = -1.0V$	120	400
	$h_{FE(2)}$		$I_C = -800mA, V_{CE} = -1.0V$	40	—
Collector-Emitter Saturation Voltage	$V_{CE(sat)}$	V	$I_C = -800mA, I_B = -80mA$	—	-0.5
Base-Emitter Saturation Voltage	$V_{BE(sat)}$	V	$I_C = -800mA, I_B = -80mA$	—	-1.2

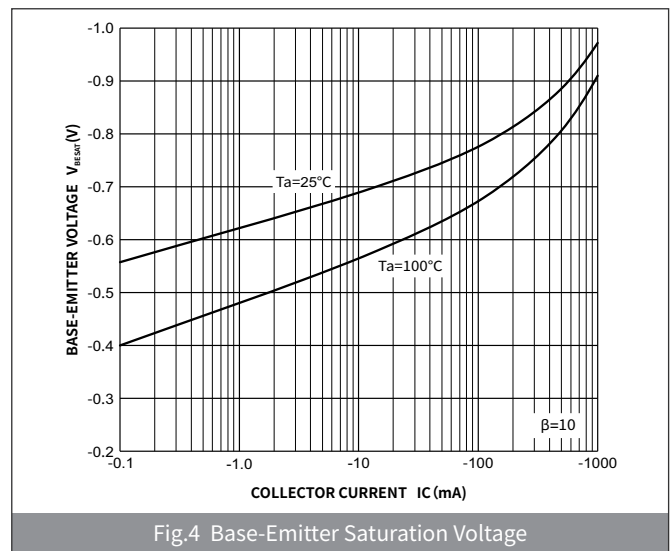
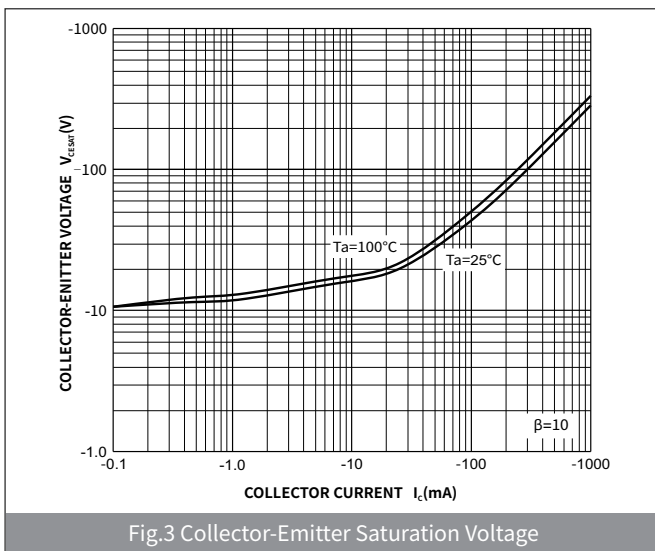
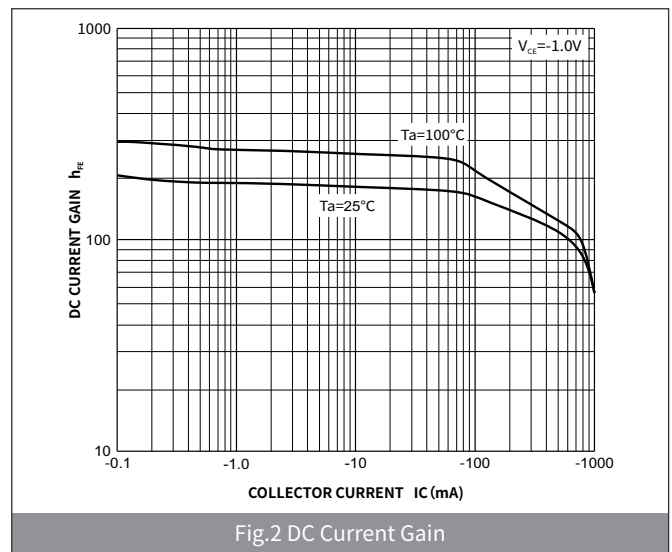
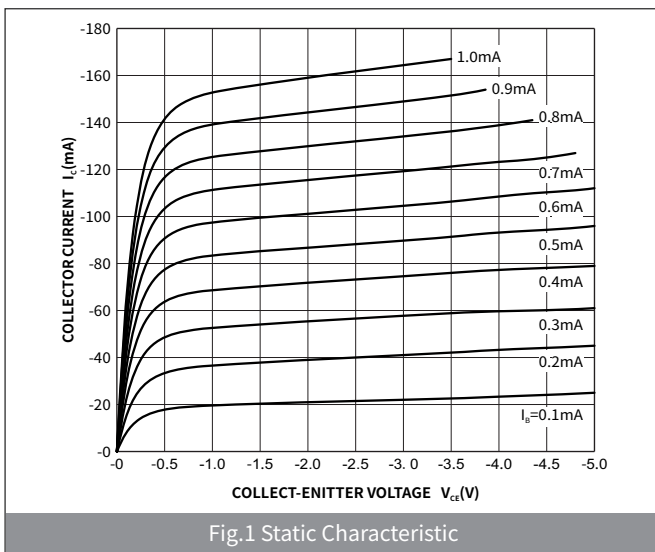
► Small-signal Characteristics

ITEM	SYMBOL	Condition	UNIT	Min	Max
Transition frequency	$f_T$	$I_C = -50\text{mA}, V_{CE} = -10\text{V}, f = 30\text{MHz}$	MHz	100	—

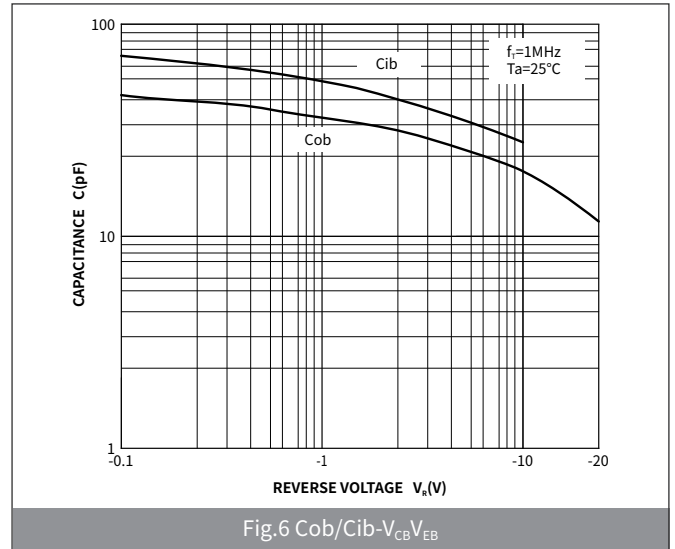
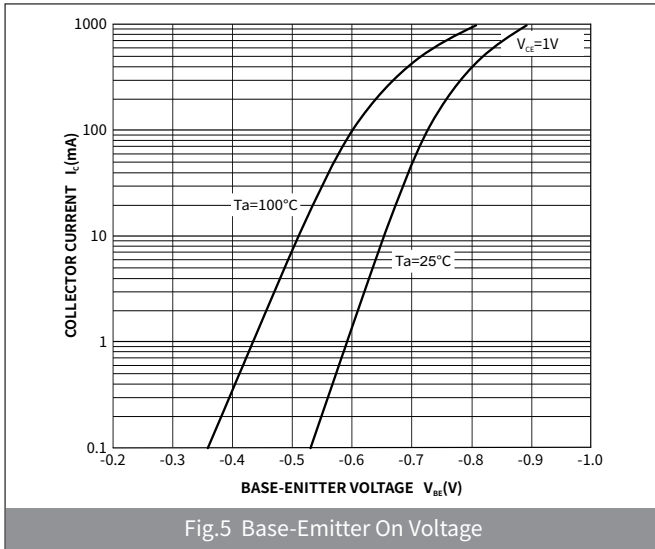
► Ordering Information

PACKAGE	PACKAGE CODE	UNIT WEIGHT(g)	REEL(pcs)	BOX(pcs)	CARTON(pcs)	DELIVERY MODE
SOT-23	R1	0.008	3000	30000	120000	7"

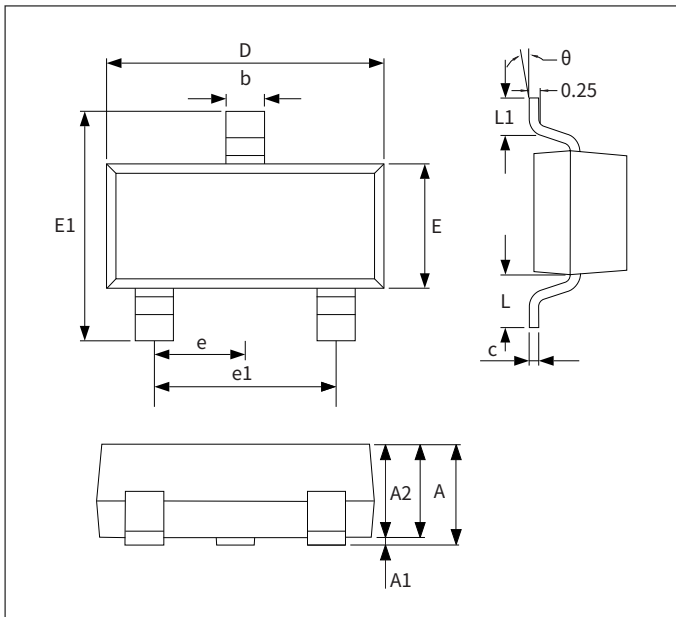
► Ratings And Characteristics Curves (Ta=25°C Unless otherwise specified)



► Ratings And Characteristics Curves (Ta=25°C Unless otherwise specified)

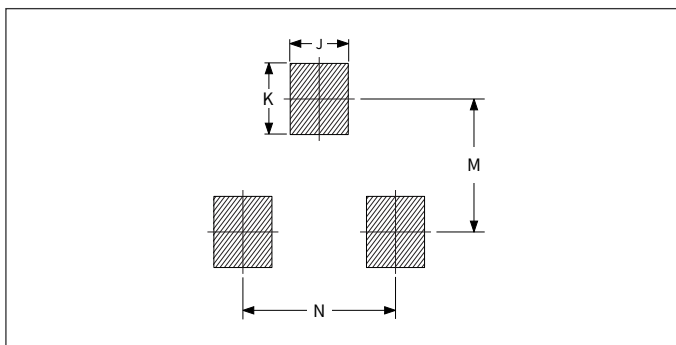


► Package Outline Dimensions (SOT-23)



Symbol	Dimensions			
	Millimeters		Inches	
	Min.	Max.	Min.	Max.
A	0.90	1.15	0.035	0.045
A1	-	0.10	-	0.004
A2	0.90	1.05	0.035	0.041
b	0.30	0.50	0.012	0.020
c	0.10	0.20	0.004	0.008
D	2.80	3.00	0.110	0.118
E	1.20	1.40	0.047	0.055
E1	2.25	2.55	0.089	0.100
e	0.950TYP		0.037TYP	
e1	1.80	2.00	0.071	0.079
L	0.550REF		0.022REF	
L1	0.30	0.50	0.012	0.020
θ	-	8°	-	8°

► Suggested Pad Layout



Symbol	Dimensions			
	Millimeters		Inches	
	Min.	Max.	Min.	Max.
J	0.80	-	0.031	-
K	-	0.90	-	0.035
M	2.00	-	0.078	-
N	-	1.90	-	0.074