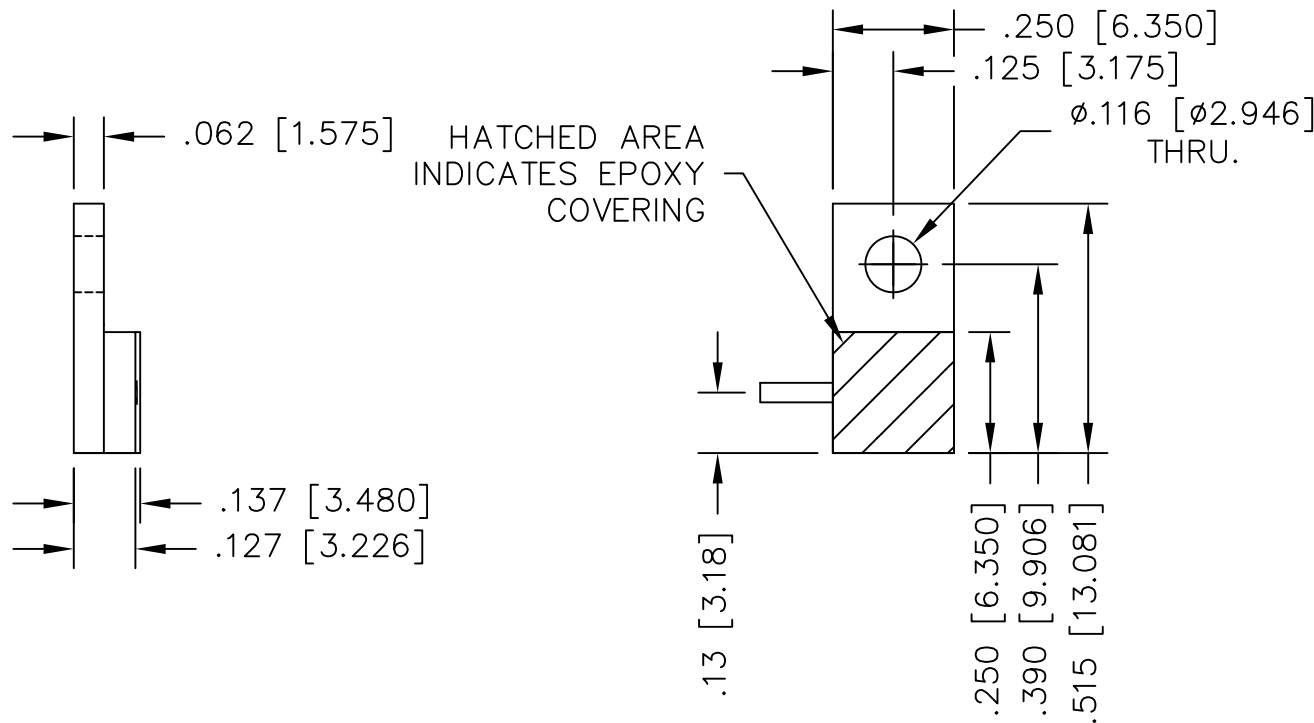


UNAUTHORIZED USE OF THIS
DRAWING IS STRICTLY PROHIBITED

DAR	REV	DESCRIPTION	APPVD	DATE
3545	F	SEE DAR	DG	3-12
5104	G	SEE DAR	DG	8-14
6166	H	SEE DAR	TJD	4-16

ELECTRICAL SPECIFICATIONS

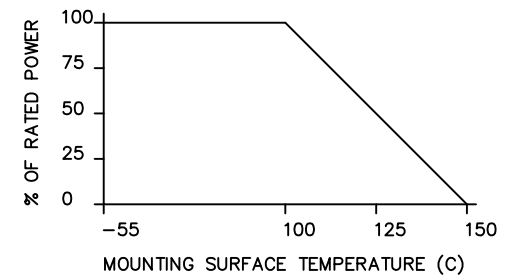
PART NO.	VALUE	INPUT POWER	FREQUENCY	VSWR
IPP-TB218-25	25 OHMS ±5%	50 WATT	DC-2.5 GHz	2±0.2:1
IPP-TB218-50	50 OHMS ±5%	50 WATT	DC-6.0 GHz	<1.10:1 DC-4.2 GHz <1.25:1 DC-6.0 GHz
IPP-TB218-100	100 OHMS ±5%	50 WATT	DC-2.5 GHz	2±0.2:1



NOTES:

- LEAD MATERIAL: 99.99% PURE SILVER, .040 [1.016] WIDE x .005 [.127] THICK x .150 [3.810] MIN. LONG.
- SUBSTRATE MATERIAL: BeO COVER MATERIAL: EPOXY
- FLANGE MATERIAL: COPPER PLATING: NICKEL
- LEAD(S) WELDED TO SUBSTRATE.
- RoHS COMPLIANT.

POWER DERATING CURVE



MATERIAL	[2] [3]	DWN DG	DATE 6-07	Innovative Power Products	
FINISH	[3]	ENG TJD	DATE 6-07		
TOLERANCE	.XX ±.02 [.50] IN [MM] .XXX ±.010 [.254]	MANUF TP	DATE 6-07	TITLE	TERMINATION, 50 WATT, FLANGE
		CAGE CODE: 437R2		P/N	IPP-TB218-XXX
		SHEET OF 1 1	SCALE 4:1	REV.	H