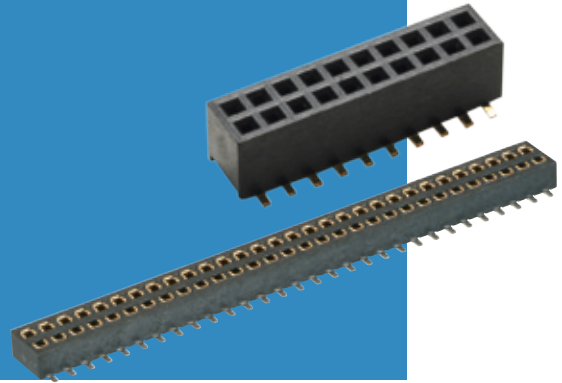


Archer Connectors – M50

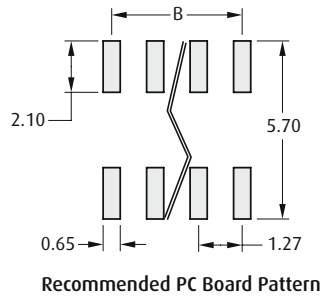
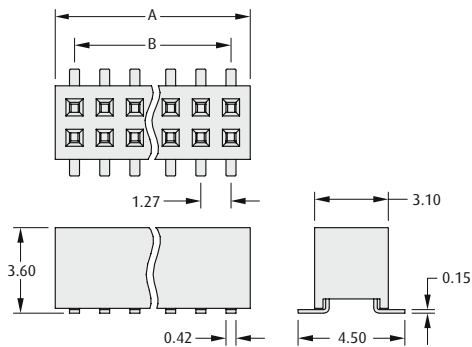


Female Vertical Surface Mount, Low Profile

- Suitable for use with male connectors on pages 108 to 109.
- Locating pegs (posts) available to ensure correct positioning on the board.
- Dual entry connector can be used as either top or bottom entry.



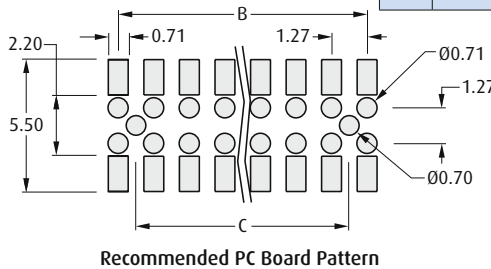
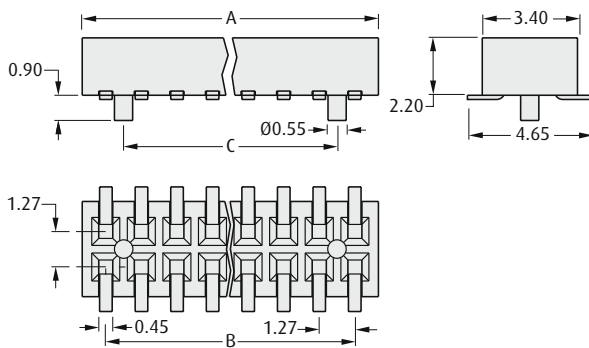
3.6mm HIGH WITHOUT POSTS



CALCULATION

A	$B + 1.73$
B	$1.27 \times (\text{No. of contacts per row} - 1)$

2.2mm HIGH WITH POSTS, DUAL ENTRY



CALCULATION

A	$B + 1.67$
B	$1.27 \times (\text{No. of contacts per row} - 1)$
C	$B - 1.27$

HOW TO ORDER

M50 - 31 X XX XX

SERIES CODE

TYPE

2	3.6mm high without posts
5	2.2mm high with posts, dual entry

FINISH

42	Gold + Tin (M50-315)	
45	Gold (M50-312)	

NO. OF CONTACTS PER ROW

03 to 50

All dimensions in mm.

1.27mm (.050") PITCH