

# QUADRATURE HYBRID MODEL DQS-302

**WIDE BANDWIDTH**

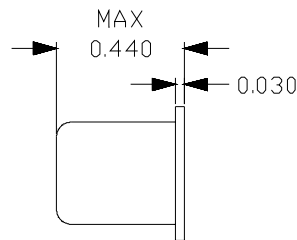
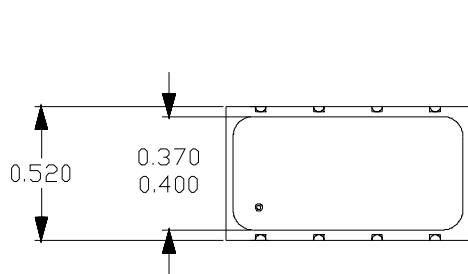
**20 - 60 MHz**

## SPECIFICATIONS

<b>Operating Frequency:</b>	20 - 60 MHz	<b>Phase Unbalance:</b>	1.0° (Typ)/ 3.0° (Max)
<b>Insertion Loss:</b>	0.3 dB (Typ) / 0.5 dB (Max)	<b>VSWR:</b>	1.3:1 (Max)
<b>Isolation:</b>	23 dB (Typ)/20 dB (Min)	<b>Power Rating</b>	1 Watt (Max)
<b>Amplitude Unbalance:</b>	0.8 dB (Typ) / 1.0 dB (Max)	<b>Impedance:</b>	50 Ohms
		<b>Operating Temp. Range:</b>	-55° to +85°C

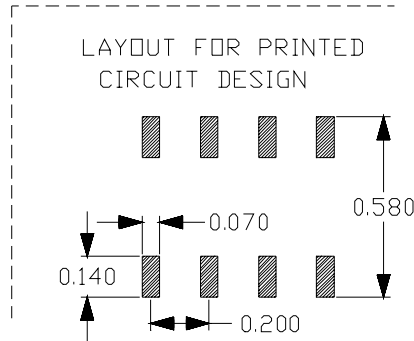
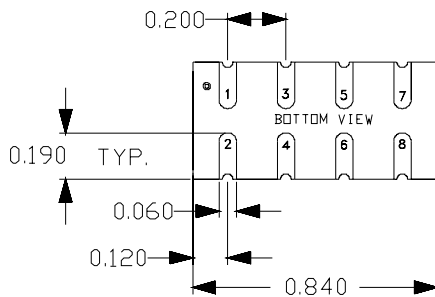


## MECHANICAL OUTLINE:102S



PIN-OUT	
INPUT	1
+90° OUTPUT	8
0° OUTPUT	7
ISOLATED*	2
External GND	3,4,5,6

\* Terminate ISOLATED port with 50 ohms.



# QUADRATURE HYBRID MODEL DQS-302

WIDE BANDWIDTH

20 - 60 MHz

## PERFORMANCE PLOTS

