



# PS CONNECTOR

## ■ Features

- Secure locking mechanism and Low insertion force
- Stable contacting performance
- Misinsertion (reverse insertion) prevention structure for the contact
- Misinsertion prevention structure for the tab (Short type housing)
- Glow wire compatible products are also available for short type housings

\* Contact JST for the glow wire compatible products.

## ■ Standards

Ⓜ: Recognized E 60389

Ⓢ: Certified LR 20812

Ⓜ: R9850196

## ■ Specifications

- Current rating: 25 A AC/DC (#250 Tab /AWG #10)
- Voltage rating: 250 V AC/DC
- Temperature range: -40°C to +105°C  
(including temperature rise in applying electrical current)
- Contact resistance: Initial value/ 3 mΩ max.  
After environmental tests/ 6 mΩ max.
- Insulation resistance: 1,000 MΩ min.
- Withstanding voltage: 2,000 VAC/minute
- Applicable wire: #110 Series...AWG #24 to #16  
#187 Series...AWG #26 to #14  
#205 Series...AWG #22 to #14  
#250/#250S Series...AWG #22 to #10
- Applicable Tab: #110 Series...0.5 mm thick  
#187 Series...0.5 mm/ 0.8 mm thick  
#205 Series...0.5 mm/ 0.8 mm thick  
#250/#250S Series...0.8 mm thick

\* In using the products, refer to "Handling Precautions for Terminals and Connectors" described on our website (Technical documents of Product information page).

\* RoHS2 compliance

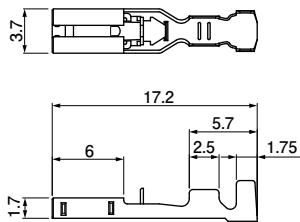
\* Dimensional unit: mm

\* Contact JST for details.

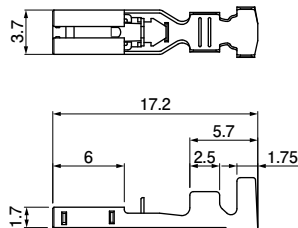
## Contact

### #110 Series

#### SPS-01T-110



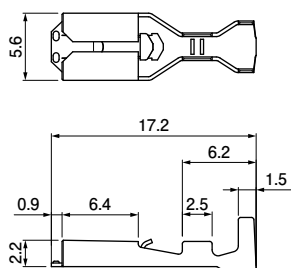
#### SPS-41T-110



### #187 Series

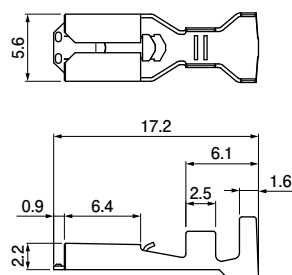
#### SPS-01T-187

(for 0.5 mm thick tabs)



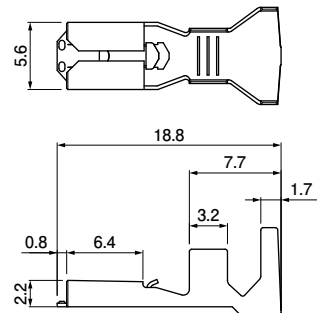
#### SPS-51T-187

(for 0.5 mm thick tabs)



#### SPS-82T-187

(for 0.5 mm thick tabs)



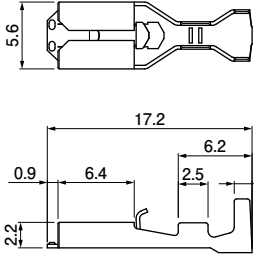
Note: The 187 series has two types of contacts that are applicable to each 0.5 mm and 0.8 mm thick tab.

# PS CONNECTOR

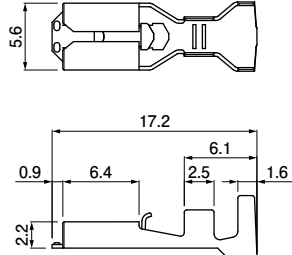
## Contact

### #187 Series

**SPS-01T-187-8**  
(for 0.8 mm thick tabs)

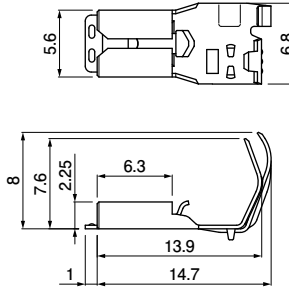


**SPS-51T-187-8**  
(for 0.8 mm thick tabs)

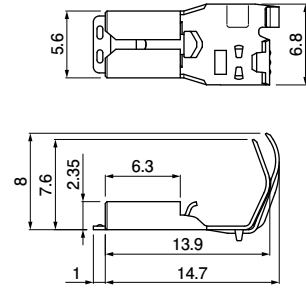


• Flag type

**SFPS-41T-187**  
(for 0.5 mm thick tabs)



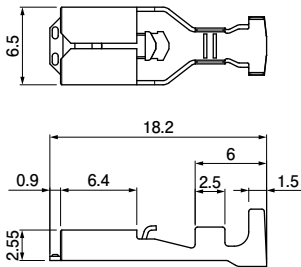
**SFPS-41T-187-8**  
(for 0.8 mm thick tabs)



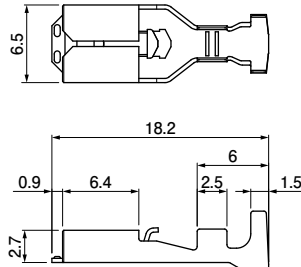
Note: The 187 series has two types of contacts that are applicable to each 0.5 mm and 0.8 mm thick tab.

### #205 Series

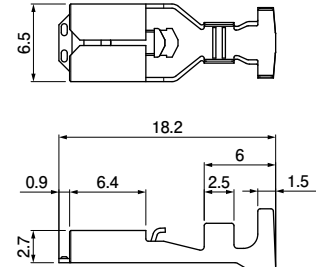
**SPS-21T-205-5**  
(for 0.5 mm thick tabs)



**SPS-21T-205**  
(for 0.8 mm thick tabs)



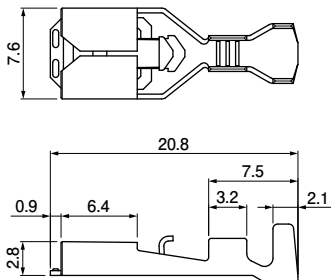
**SPS-51T-205**  
(for 0.8 mm thick tabs)



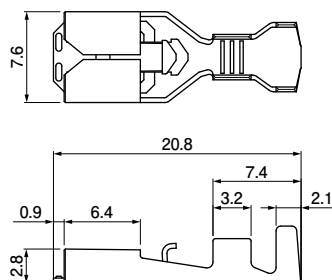
Note: The 205 series has two types of contacts that are applicable to each 0.5 mm and 0.8 mm thick tab.

### #250 Series

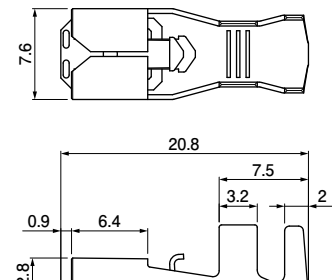
**SPS-21T-250**



**SPS-61T-250**

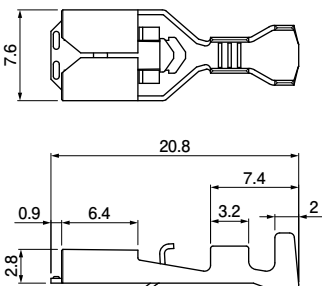


**SPS-91T-250**

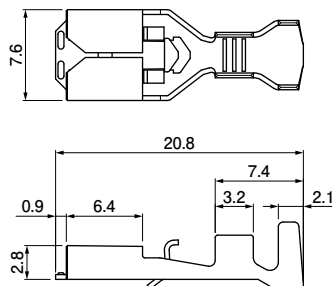


• For short type housing

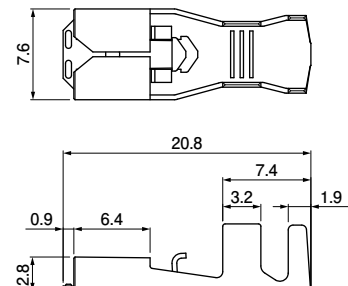
**SPS-21T-250R**



**SPS-61T-250R**



**SPS-91T-250R**

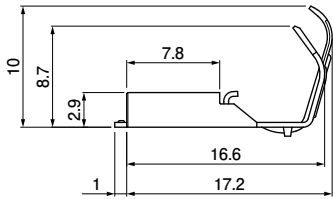
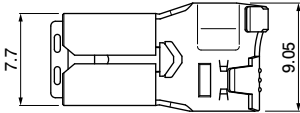


## Contact

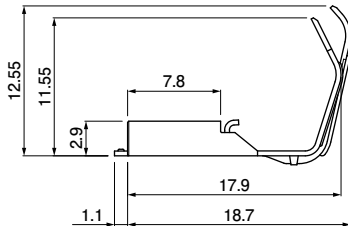
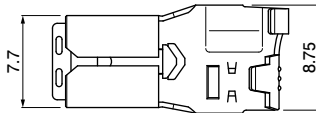
### #250 Series

- Flag type

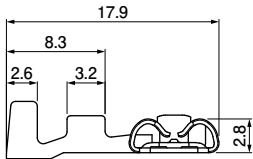
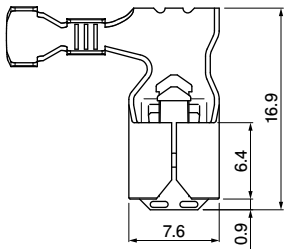
SFPS-61T-250



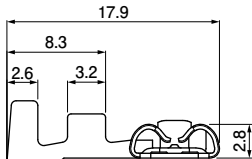
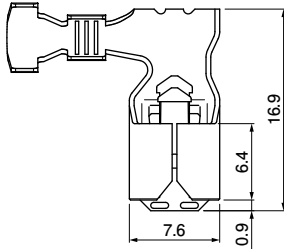
SFPS-91T-250



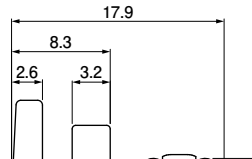
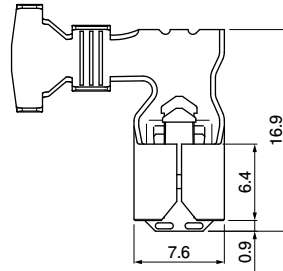
SFPS-21T-250H



SFPS-61T-250H

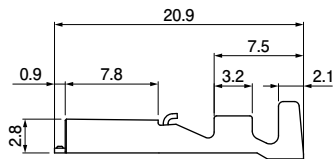
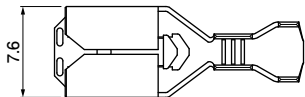


SFPS-91T-250H

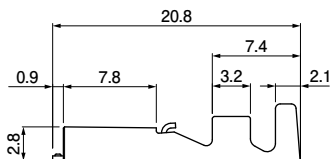
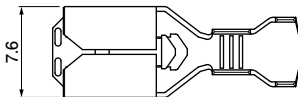


### #250S Series

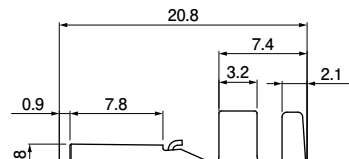
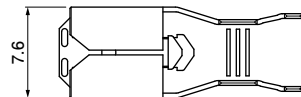
SPS-21T-250S



SPS-61T-250S



SPS-91T-250S



# PS CONNECTOR

## Contact

| Series                | Model No.              | Applicable wire       |               | Insulation O.D. (mm)   | Q'ty/reel      |                      |                |                      |       |
|-----------------------|------------------------|-----------------------|---------------|------------------------|----------------|----------------------|----------------|----------------------|-------|
|                       |                        | mm <sup>2</sup>       | AWG #         |                        |                |                      |                |                      |       |
| #110                  | SPS-01T-110            | 0.21 to 0.5           | 24 to 20      | 1.0 to 2.5             | 10,000         |                      |                |                      |       |
|                       | SPS-41T-110            | 0.5 to 1.31           | 20 to 16      | 1.9 to 3.4             | 10,000         |                      |                |                      |       |
| #187                  | for 0.5 mm thick tabs  |                       | SPS-01T-187   | 0.13 to 0.5            | 26 to 20       | 1.3 to 3.4           | 10,000         |                      |       |
|                       |                        |                       | SPS-51T-187   | 0.5 to 2.0             | 20 to 14       | 1.9 to 3.6           | 7,500          |                      |       |
|                       |                        |                       | * SPS-82T-187 | 0.75+0.75 to 1.25+1.25 | 18+18 to 16+16 | 2.1+2.1 to 2.9+2.9   | 3,500          |                      |       |
|                       | for 0.8 mm thick tabs  |                       | SPS-01T-187-8 | 0.13 to 0.5            | 26 to 20       | 1.3 to 3.4           | 10,000         |                      |       |
|                       |                        |                       | SPS-51T-187-8 | 0.5 to 2.0             | 20 to 14       | 1.9 to 3.6           | 7,500          |                      |       |
|                       | Flag type              | for 0.5 mm thick tabs | SFPS-41T-187  | 0.3 to 1.25            | 22 to 16       | 1.7 to 3.4           | 5,000          |                      |       |
| for 0.8 mm thick tabs |                        | SFPS-41T-187-8        | 0.3 to 1.31   | 22 to 16               | 1.7 to 3.4     | 5,000                |                |                      |       |
| #205                  | for 0.5 mm thick tabs  |                       | SPS-21T-205-5 | 0.3 to 0.75            | 22 to 18       | 1.5 to 3.1           | 5,000          |                      |       |
|                       | for 0.8 mm thick tabs  |                       | SPS-21T-205   | 0.3 to 0.75            | 22 to 18       | 1.5 to 3.1           | 5,000          |                      |       |
|                       |                        |                       | SPS-51T-205   | 0.5 to 2.0             | 20 to 14       | 1.9 to 3.6           | 5,000          |                      |       |
| #250                  |                        |                       | SPS-21T-250   | 0.3 to 0.75            | 22 to 18       | 1.5 to 3.1           | 5,000          |                      |       |
|                       |                        |                       | SPS-61T-250   | 0.75 to 2.0            | 18 to 14       | 2.1 to 3.9           | 5,000          |                      |       |
|                       |                        |                       | SPS-91T-250   | 2.0 to 5.5             | 14 to 10       | 3.0 to 4.7           | 4,000          |                      |       |
|                       | for short type housing |                       | SPS-21T-250R  | 0.3 to 0.75            | 22 to 18       | 1.5 to 3.1           | 3,500          |                      |       |
|                       |                        |                       | SPS-61T-250R  | 0.75 to 2.0            | 18 to 14       | 2.1 to 3.9           | 3,500          |                      |       |
|                       |                        |                       | SPS-91T-250R  | 2.0 to 5.5             | 14 to 10       | 3.0 to 4.7           | 3,500          |                      |       |
|                       | Flag type              |                       |               | SFPS-61T-250           | 0.75 to 2.0    | 18 to 14             | 2.1 to 3.9     | 3,000                |       |
|                       |                        |                       |               | SFPS-91T-250           | 3.5 to 5.5     | 12 to 10             | 4.0 to 5.2     | 2,000                |       |
|                       |                        | H type                |               |                        | SFPS-21T-250H  | 0.3 to 0.75          | 22 to 18       | 1.5 to 3.1           | 2,400 |
|                       |                        |                       |               |                        | SFPS-61T-250H  | 0.75 to 2.0          | 18 to 14       | 2.1 to 3.9           | 2,000 |
|                       |                        |                       |               |                        | SFPS-91T-250H  | 2.0 to 5.5           | 14 to 10       | 3.5 to 7.2           | 1,300 |
|                       |                        |                       |               |                        |                | 1.25+1.25 to 2.0+2.0 | 16+16 to 14+14 | 1.75+1.75 to 3.6+3.6 |       |
| #250S                 |                        |                       | SPS-21T-250S  | 0.3 to 0.75            | 22 to 18       | 1.5 to 3.1           | 5,000          |                      |       |
|                       |                        |                       | SPS-61T-250S  | 0.75 to 2.0            | 18 to 14       | 2.1 to 3.9           | 5,000          |                      |       |
|                       |                        |                       | SPS-91T-250S  | 2.0 to 5.5             | 14 to 10       | 3.0 to 4.7           | 4,000          |                      |       |

### Material and Finish

Brass, tin-plated

RoHS2 compliance

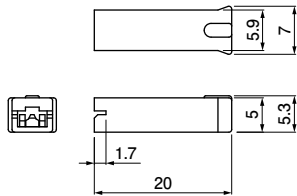
Note: \*Marked product is unlisted in CSA/TÜV.

| Contact           | Crimping machine | Applicator       |                  |                            |
|-------------------|------------------|------------------|------------------|----------------------------|
|                   |                  | Crimp applicator | Dies             | Crimp applicator with dies |
| SPS-01T-110       | AP-K2N           | MK-L-SPS         | MK/SPS-01-110    | APLMK SPS01-110            |
| SPS-41T-110       |                  |                  | MK/SPS-41-110    | APLMK SPS41-110            |
| SPS-01T-187 (-8)  |                  |                  | MK/SPS-01-187    | APLMK SPS01-187            |
| SPS-51T-187 (-8)  |                  |                  | MK/SPS-51-187    | APLMK SPS51-187            |
| SPS-82T-187       |                  |                  | MK/SPS-82-187    | APLMK SPS82-187            |
| SFPS-41T-187 (-8) |                  | MKF-L-PS187      | MK/SFPS-41-187   | APL SFPS41-187             |
| SPS-21T-205 (-5)  |                  |                  | MK-L-SPS         | MK/SPS-21-205              |
| SPS-51T-205       |                  | MK/SPS-51-205    |                  | APLMK SPS51-205            |
| SPS-21T-250 (S)   |                  | MK/SPS-21-250    |                  | APLMK SPS21-250            |
| SPS-21T-250R      |                  | MK/SPS-21-250R   |                  | APLMK SPS21-250R           |
| SPS-61T-250 (S)   |                  | MK/SPS-61-250    |                  | APLMK SPS61-250            |
| SPS-61T-250R      |                  | MK/SPS-61-250R   | APLMK SPS61-250R |                            |
| SPS-91T-250 (S)   |                  | MK/SPS-91-250    | APLMK SPS91-250  |                            |
| SPS-91T-250R      |                  | MK/SPS-91-250R   | APLMK SPS91-250R |                            |
| SFPS-61T-250      |                  | MKF-L-PS250      | MK/SFPS-61-250   | APL SFPS61-250             |
| SFPS-91T-250      |                  |                  | MK/SFPS-91-250   | APL SFPS91-250             |
| SFPS-21T-250H     |                  | MKS-L-RASRSF     | MK/SFPS-21-250H  | APLMK SFPS21-250H          |
| SFPS-61T-250H     |                  |                  | MK/SFPS-61-250H  | APLMK SFPS61-250H          |
| SFPS-91T-250H     |                  |                  | MK/SFPS-91-250H  | APLMK SFPS91-250H          |

Note: Contact JST for fully automatic crimping applicator.

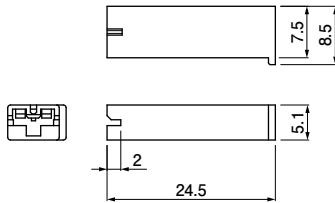
## Housing

### #110 Series PS-110

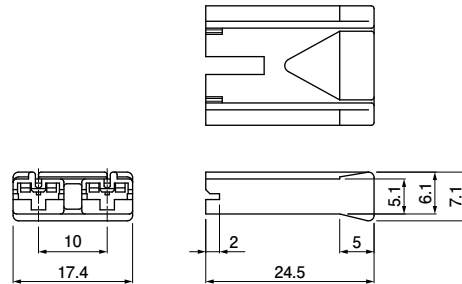


### #187 Series • for 0.5 mm thick tabs

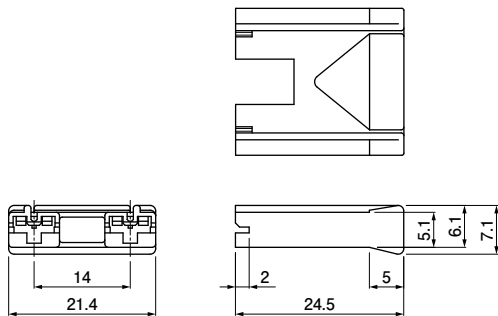
#### PS-187



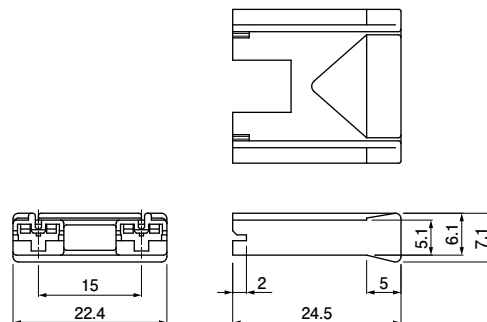
#### PS-187-2A-10



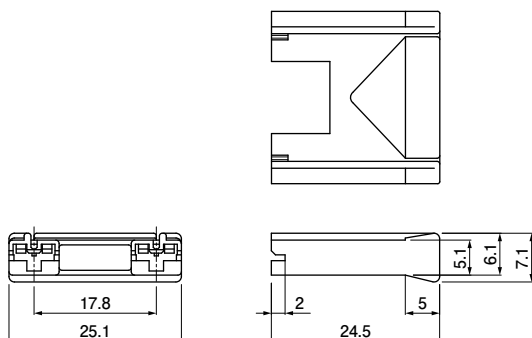
#### PS-187-2A-14



#### PS-187-2A-15



#### PS-187-2A-17.8



Note: The 187 series has two types of housings that are applicable to each 0.5 mm and 0.8 mm thick tab.

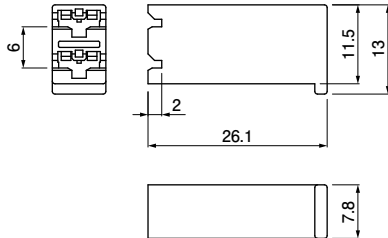
# PS CONNECTOR

## Housing

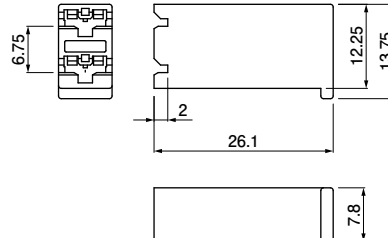
### #187 Series

- for 0.5 mm thick tabs

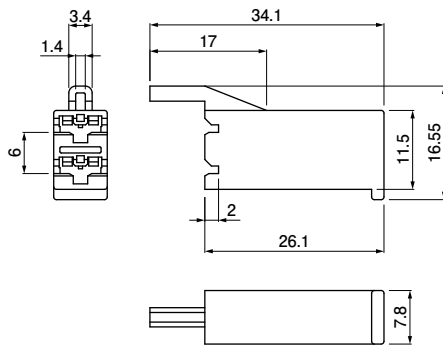
PS-187-2B



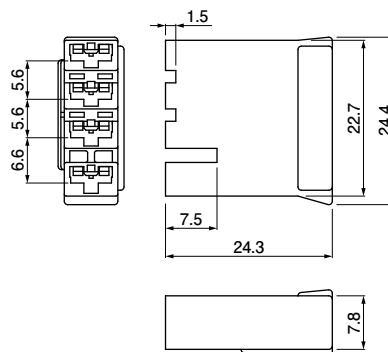
PS-187-2B-6.75



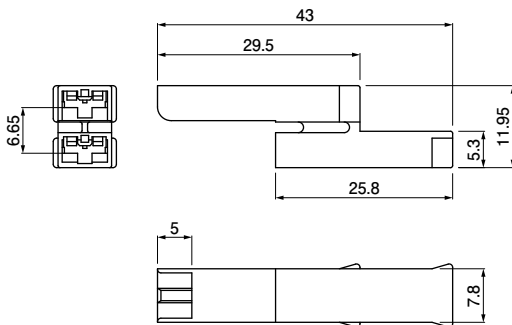
PS-187-2B1



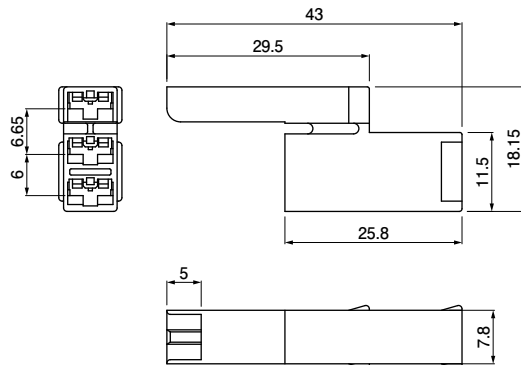
PS-187-4B



PS-187-2V

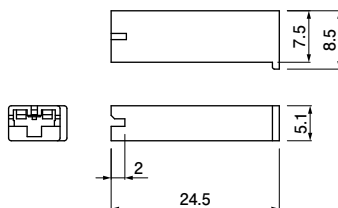


PS-187-3V

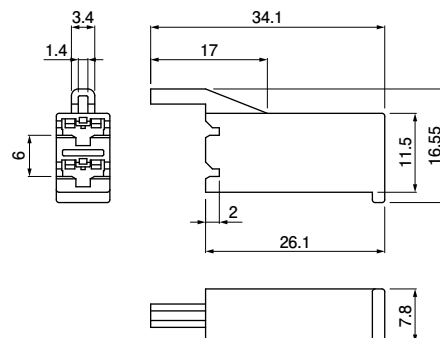


- for 0.8 mm thick tabs

PS-187-8-H



PS-187-2B1-8-H

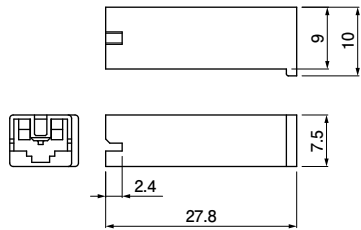


Note: The 187 series has two types of housings that are applicable to each 0.5 mm and 0.8 mm thick tab.

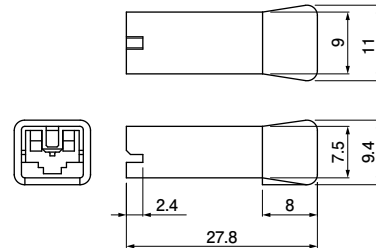
## Housing

### #250 Series

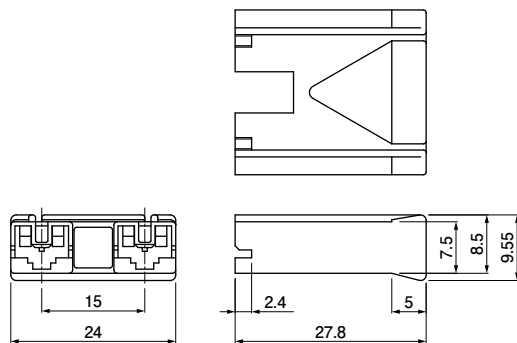
#### PS-250



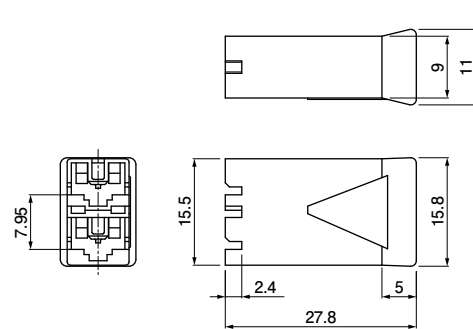
#### PS-250-A



#### PS-250-2A-15

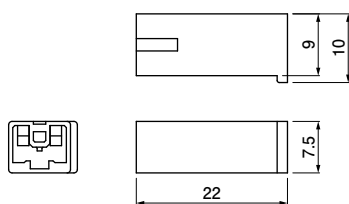


#### PS-250-2B

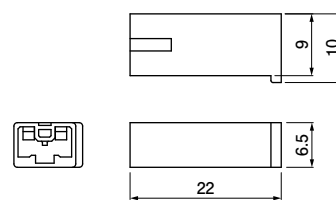


#### • Short type

- PS-250-G
- PS-250-G-WGJ2  
(Glow wire compatible products)

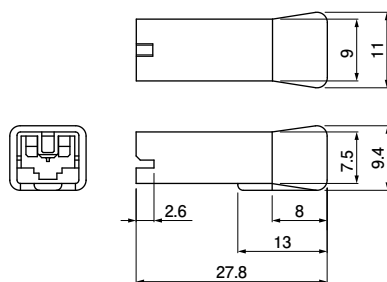


#### PS-250-GL (Thin type)



### #250S Series

#### NPS-250-A

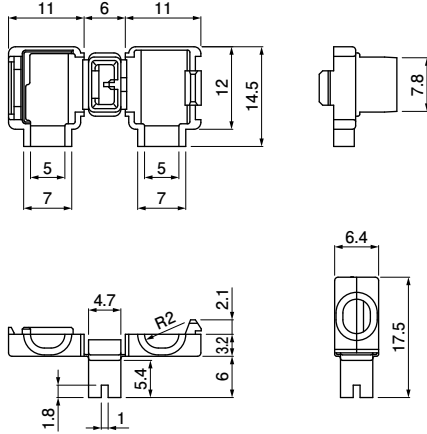


# PS CONNECTOR

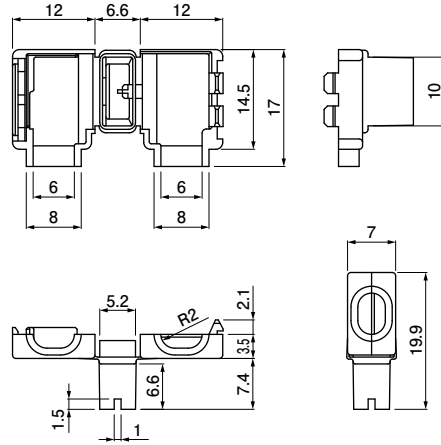
## Housing

### One-touch sleeve

FPS-187



FPS-250



| Series                | Model No.              | Q'ty/bag  | Applicable contact                           |   |
|-----------------------|------------------------|---|--|---|
| #110                  | PS-110                 | 1,000   | SPS-01T-110<br>SPS-41T-110                   |   |
| #187                  | for 0.5 mm thick tabs  | PS-187  | 1,000  | SPS-01T-187<br>SPS-51T-187<br>SPS-82T-187 |
|                       |                        | PS-187-2A-10                                      | 500  |   |
|                       |                        | PS-187-2A-14                                      | 500  |   |
|                       |                        | PS-187-2A-15                                      | 500  |   |
|                       |                        | PS-187-2A-17.8                                    | 500  |   |
|                       |                        | PS-187-2B   | 500  |   |
|                       |                        | PS-187-2B-6.75                                    | 500  |   |
|                       |                        | PS-187-2B1  | 500  |   |
|                       |                        | PS-187-4B   | 500  |   |
|                       |                        | PS-187-2V   | 500  |   |
|                       | PS-187-3V              | 500   |  |   |
| for 0.8 mm thick tabs | PS-187-8-H (Note1)     | 1,000   | SPS-01T-187-8                                |   |
|                       | PS-187-2B1-8-H (Note1) | 500   | SPS-51T-187-8                                |   |
| #250                  |                        | PS-250  | 1,000  | SPS-21T-250<br>SPS-61T-250<br>SPS-91T-250 |
|                       |                        | PS-250-A  | 500  |   |
|                       |                        | PS-250-2A-15                                      | 500  |   |
|                       |                        | PS-250-2B   | 500  |   |
|                       | Short type             | PS-250-G  | 1,400  | SPS-21T-250R                              |
|                       |                        | PS-250-G-WGJ2 (Compatible with glow wire) (Note2) | 1,400  | SPS-61T-250R                              |
|                       |                        | PS-250-GL (Thin type)                             | 1,400  | SPS-91T-250R                              |
| #250S                 | NPS-250-A              | 1,000   | SPS-21T-250S<br>SPS-61T-250S<br>SPS-91T-250S |   |
| One-touch sleeve      | * FPS-187              | 500   | SFPS-41T-187                                 |   |
|                       | * FPS-250              | 500   | SFPS-61T-250                                 |   |

#### Material and Finish

PA 66, UL94V-0, natural (white)  
 (Note1) PA 66, UL94V-0, gray  
 (Note2) PA 6, UL94V-2, natural (white)

RoHS2 compliance

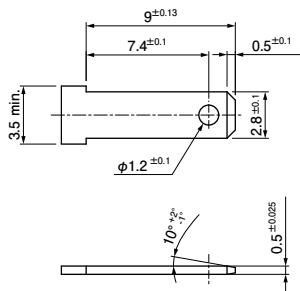
Note: \*Marked products are unlisted in UL/CSA/TÜV.



## Tab

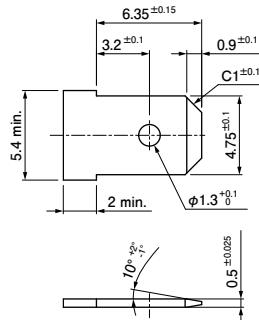
### #110

0.5 mm thick tabs

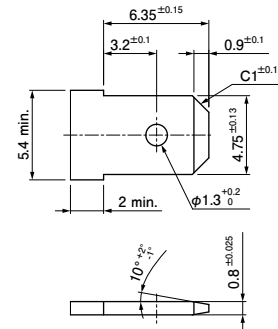


### #187

0.5 mm thick tabs

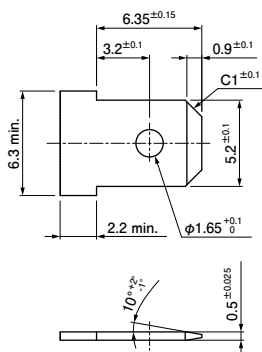


0.8 mm thick tabs

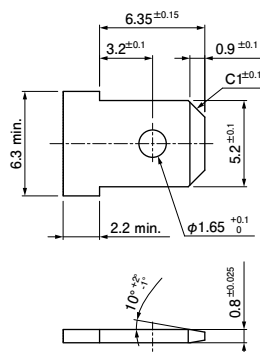


### #205

0.5 mm thick tabs

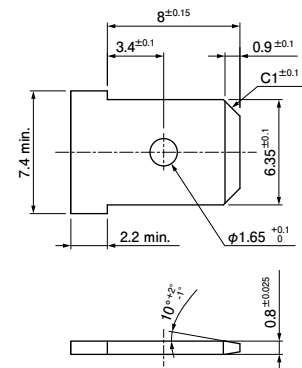


0.8 mm thick tabs



### #250

0.8 mm thick tabs



- Note: 1. Use the brass materials for the tabs.  
 2. No ribs or slits shall be provided on the tab surface.  
 3. Contact JST when using the PS connector for Micro-switch.  
 4. Contact JST when using PS-187-4B.