

REV.	ECN. NO.	APPD.
A	BC-07-7025410	Hao Gu
B	BC-07-7039049	Hao Gu

SPECIFICATION:

- ELECTRICAL CHARACTERISTICS :
 - CONTACT CURRENT RATING :
DC 20V 5A MAX;
 - CONTACT RESISTANCE: 30 MILLIOHMS MAX INITIAL,
60 MILLIOHMS MAX. AFTER LIFE TEST
 - DIELECTRIC WITHSTANDING VOLTAGE : 500 VAC MIN.
 - INSULATION RESISTANCE : 100 MEGOHMS MIN.
- MECHANICAL CHARACTERISTICS :
 - CONNECTOR MATING FORCE : 3~30N(0.3~3.0KgF).
 - CONNECTOR UNMATING FORCE: 3~30N(0.3~3.0KgF).
 - DURABILITY: 5000 CYCLES.
 - OPERATING TEMPERATURE : -25°C±2°C TO +70°C±2°C.
- RECOMMENDED WAVE SOLDER PEAK TEMPERATURE: 260°C,3~5S.
- RECOMMENDED P.C.B. THICKNESS: 1.60±0.10[.063±.004].
- THE PRODUCT IS RoHS COMPLIANT

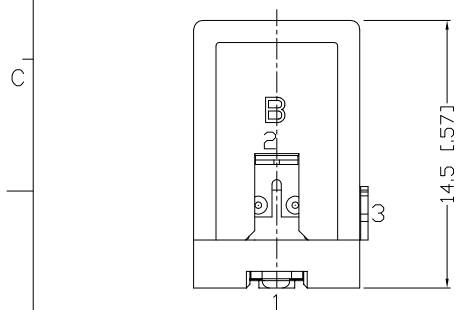
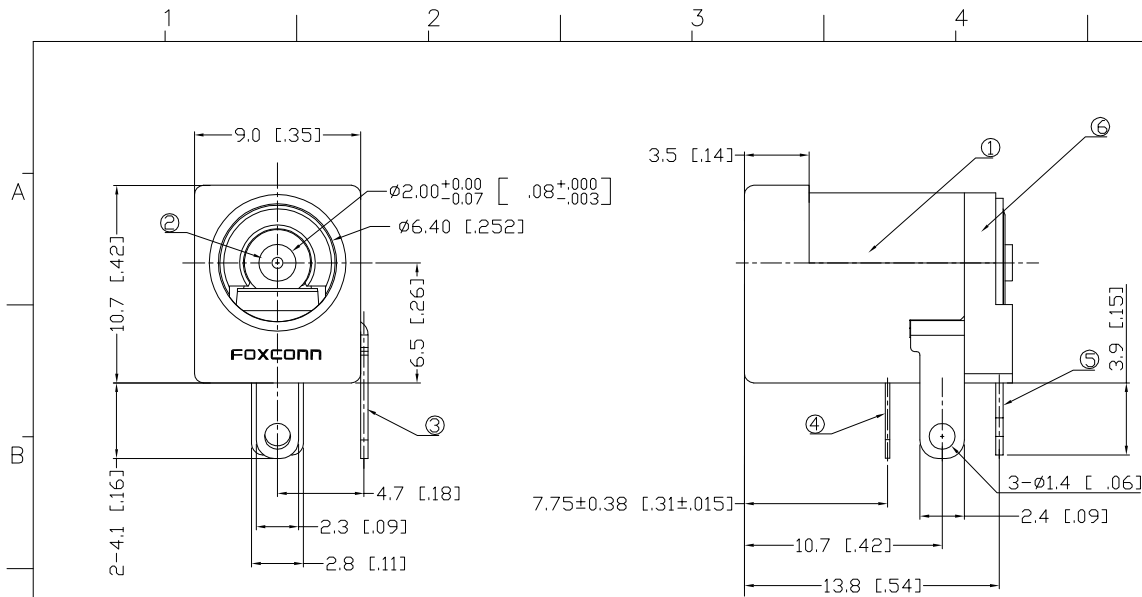
PRODUCT No.: JP D 1 0 3 0 -N521- 4 F

Jack Series JP=Power Jack Lead Free Code
 Power Type D=DC Packing code 4=Tray Packing
 Terminator Type 1=Right Angle T/H Modification Code
 Contact Design Type 0=Male Contact Area Plating 0=100~200u*Sn
 No.of Pos 3=3 Pos

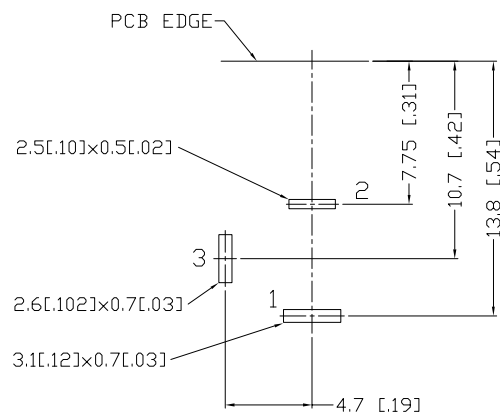
6	COVER	1	THERMOPLASTIC UL 94V-0	MOLDED BLACK	
5	BACK CONTACT	1	IRON ALLOY	LEAD FREE TIN PLATED	
4	SPRING CONTACT	1	COPPER ALLOY	LEAD FREE TIN PLATED	
3	SWITCH CONTACT	1	IRON ALLOY	LEAD FREE TIN PLATED	
2	CENTER PIN	1	COPPER ALLOY	LEAD FREE TIN PLATED	
1	HOUSING	1	THERMOPLASTIC UL 94V-0	MOLDED BLACK	

ITEM	DESC.	Q'TY	MATERIAL	TREATMENT	REMARK
X.±	X°.±	UNITS	NAME(INTENDED USE)		FOXCONN HON HAI PRECISION IND. CO.,LTD. TAIPEI, TAIWAN, R.O.C.
.X±	.X°.±	MAT'L	CUSTOMER		
.XX±	.XX°.±	N/A	PART NO.(INTENDED USE)		TITLE: DC POWER JACK CENTER PIN=Ø2.00
.XXX±	.XXX°.±	FINISH	APPD: Adward Zheng 07/14/07		DWG NO.: 305-0000-2112
		Q'TY	CHKD: Z.Q Mou 07/13/07		SCALE SHEET REV.
		N/A	DR: Y Q Sun 07/12/07		N/A 1/1 B

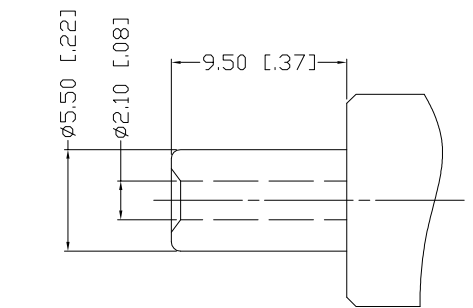
THESE DRAWINGS AND SPECIFICATIONS ARE THE PROPERTY OF HON HAI PRECISION IND. CO., LTD. AND SHALL NOT BE REPRODUCED, COPIED OR USED IN ANY MANNER WITHOUT THE PRIOR WRITTEN CONSENT OF HON HAI PRECISION IND. CO., LTD.



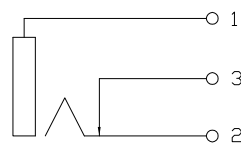
TERMINAL NUMBERS



RECOMMENDED P.C.B LAYOUT
COMPONENT SIDE(TOL:±0.05[0.002])



PLUG DIAGRAM (TOL:±0.05[±0.002])



CIRCUIT SCHEMATIC