

## Han 10HP-HSE-M32

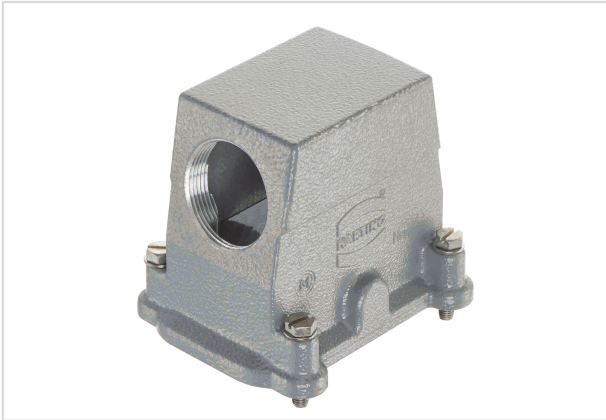


Image is for illustration purposes only. Please refer to product description.

Part number	19 39 010 0527
Specification	Han 10HP-HSE-M32
HARTING eCatalogue	<a href="https://b2b.harting.com/19390100527">https://b2b.harting.com/19390100527</a>

### Identification

Category	Hoods/Housings
Series of hoods/housings	Han <sup>®</sup> HP
Type of hood/housing	Hood

### Version

Locking type	Screw locking
Size	10 B
Version	Side entry
Cable entry	1x M32
Field of application	Hoods/housings for rough environments

### Technical characteristics

Tightening torque (screw locking)	3 Nm
Limiting temperature	-40 ... +125 °C
Degree of protection acc. to IEC 60529	IP66 IP68 IP69 / IPX9K acc. to ISO 20653

### Material properties

Material (hood/housing)	Aluminium die-cast
Surface (hood/housing)	Powder-coated
Colour (hood/housing)	RAL 7037 (dust grey)
Material (seal)	NBR
Material (locking)	Stainless steel



Pushing Performance

## Material properties

RoHS	compliant
ELV status	compliant
China RoHS	e
REACH Annex XVII substances	No
REACH ANNEX XIV substances	No
REACH SVHC substances	No

## Specifications and approvals

Specifications	EN 60664-1 IEC 61984
CE	Yes

## Commercial data

Packaging size	1
Net weight	247.1 g
Country of origin	Germany
European customs tariff number	85389099
eCl@ss	27440202 Shell for industrial connectors