

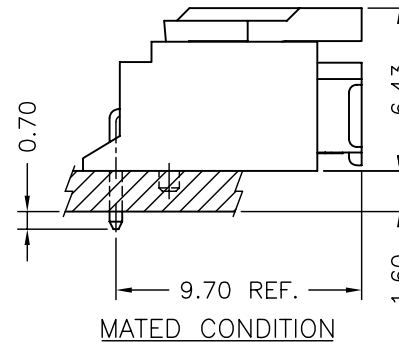
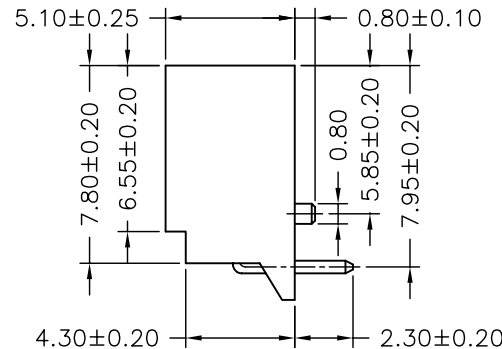
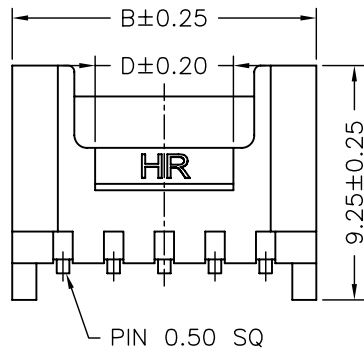
P/N LEGEND

A2006	WR	F	XP	N	X	X	T1	N	Y4	G
①	②	③	④	⑤	⑥	⑦	⑧	⑨	⑩	⑪

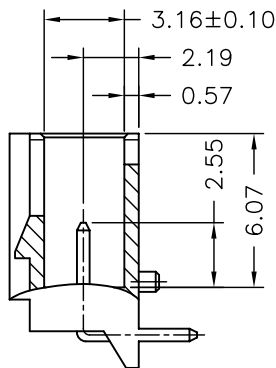
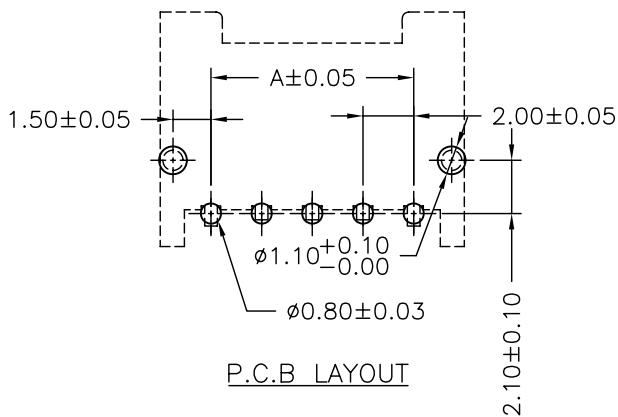
① Series No.  
 ② Connector type: WR=Right angle  
 ③ Mounting type: F=With foot  
 ④ No. of circuits  
 ⑤ N=Halogen Free  
 ⑥ Material: L=LCP-V0 ; 0=Nylon 66+15%GF  
 ⑦ Color: N=Natural ; W=White  
 ⑧ Plating code for contacts: T1=Tin-flash  
 ⑨ Plating code: N=Non-plating  
 ⑩ Option code: Y4=2.30mm  
 ⑪ Packing code: G=Bag

SPECIFICATIONS

Current Rating: 3A AC,DC  
 Voltage Rating: 250V AC,DC  
 Temperature Range: -40°C ~ +85°C  
 Contact Resistance: 30mΩ Max  
 Insulation Resistance: 1000MΩ Min  
 Withstanding Voltage: 1000V AC/minute  
 Pin Material: Brass  
 Tin 100u" Min. plated ;Nickel 30u"Min. Under plated  
 Wave soldering temperature: 265°C±5°C for 5 second



Circuit No.	Dimensions			
	A	B	C	D
02P	2.00	6.00	4.90	1.50
03P	4.00	8.00	6.90	1.46
04P	6.00	10.00	8.90	3.46
05P	8.00	12.00	10.90	5.46
06P	10.00	14.00	12.90	7.46
07P	12.00	16.00	14.90	9.46
08P	14.00	18.00	16.90	11.46
09P	16.00	20.00	18.90	13.46
10P	18.00	22.00	20.90	15.46
11P	20.00	24.00	22.90	17.46
12P	22.00	26.00	24.90	19.46
13P	24.00	28.00	26.90	21.46
14P	26.00	30.00	28.90	23.46
15P	28.00	32.00	30.90	25.46
16P	30.00	34.00	32.90	27.46



燦達電子工業股份有限公司 JOINT TECH ELECTRONIC IND. CO., LTD.				UNIT	SCALE	SHEET	TITLE:
				mm	1 : 1	1 of 1	
DRAWN BY		APPROVED BY		2.00mm PITCH 90° WAFER WITH BOSS			
周傑亮		謝瑞清					
2016.12.26		2016.12.26					
GENERAL TOLERANCE				DRAW NO. :			
X. X±0.25		ANGLE±		A2006WR-F-XPXXXXXXY4X			
X. XX±0.15		▽					
X. XXX±0.05		⊕		REV. A0			
A0	NEW RELEASE	2016.12.26	周傑亮				
REV.	DESCRIPTION	DATE	NAME				