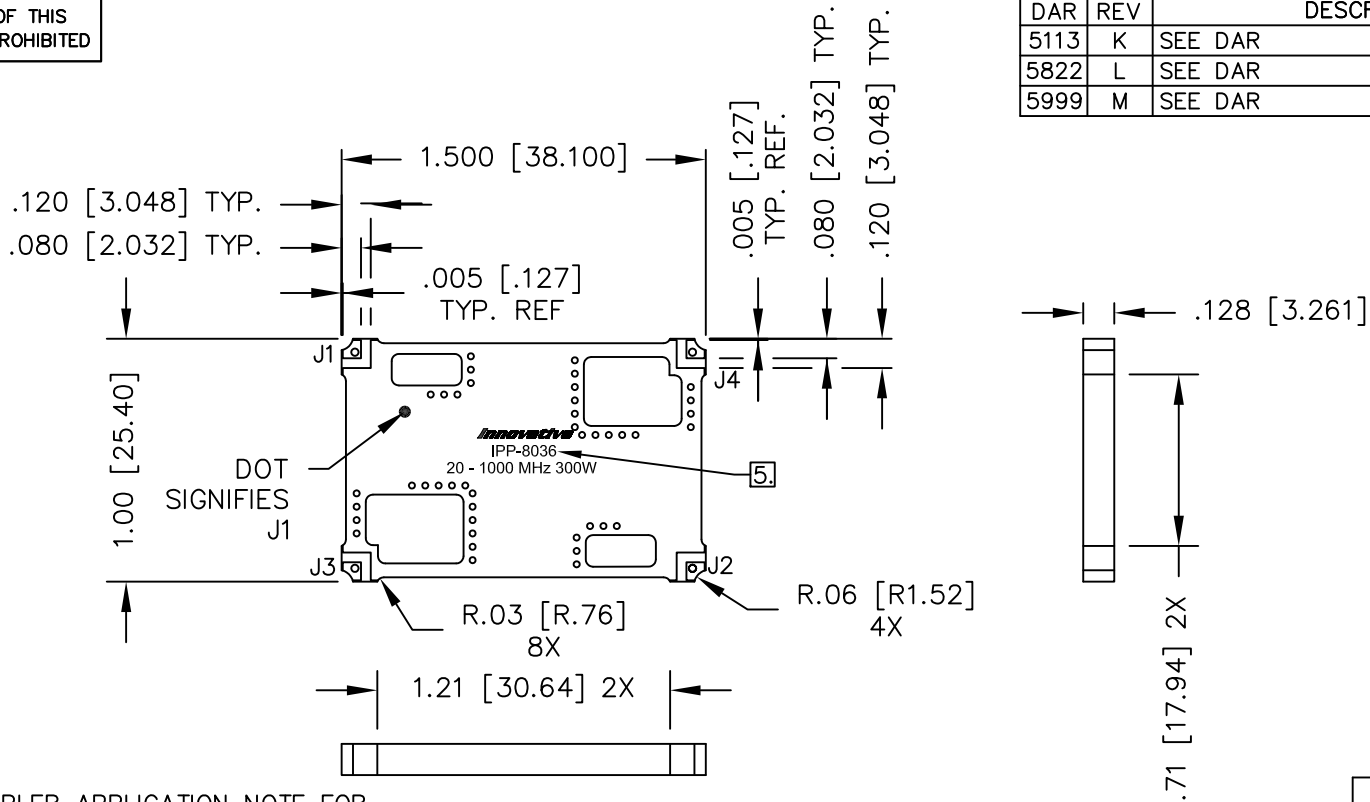


UNAUTHORIZED USE OF THIS
DRAWING IS STRICTLY PROHIBITED

DAR	REV	DESCRIPTION	APPVD	DATE
5113	K	SEE DAR	DG	8-14
5822	L	SEE DAR	DG	10-15
5999	M	SEE DAR	DG	2-16



NOTES:

- SEE SMD COUPLER APPLICATION NOTE FOR FURTHER INFORMATION.
 - PARTS WITH RoHS TIN FINISH ARE RoHS COMPLIANT.
 - AVAILABLE IN TAPE AND REEL. SEE SMD COUPLER APPLICATION NOTE FOR FURTHER INFORMATION.
 - DO NOT EXCEED 220°C WHEN INSTALLING COUPLER.
5. SEE CHART FOR PART NUMBER AND FINISH.

ELECTRICAL SPECIFICATIONS

FREQUENCY: 20 - 1000 MHz.
 INSERTION LOSS: <0.35 dB
 MAIN LINE VSWR: <1.25:1
 DIRECTIVITY: >20dB
 COUPLING: 50.0±1.5dB
 COUPLED FLATNESS: ±0.6dB
 POWER: 300 WATT
 TEMPERATURE: -55°C TO 85°C

FINISH	
P/N	TYPE
IPP-8036	TIN/LEAD
IPP-8036RT	RoHS MATTE TIN

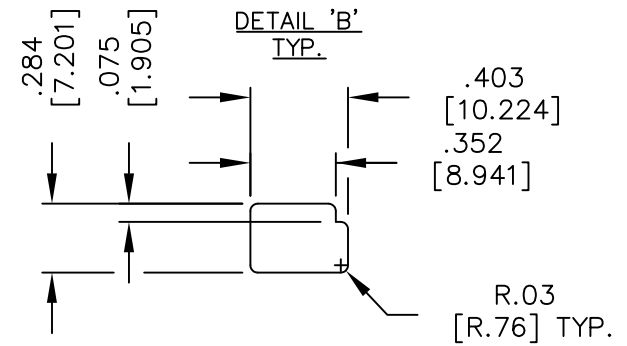
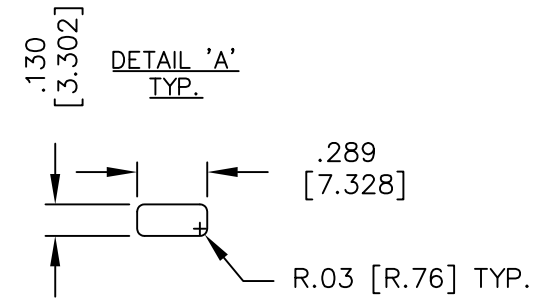
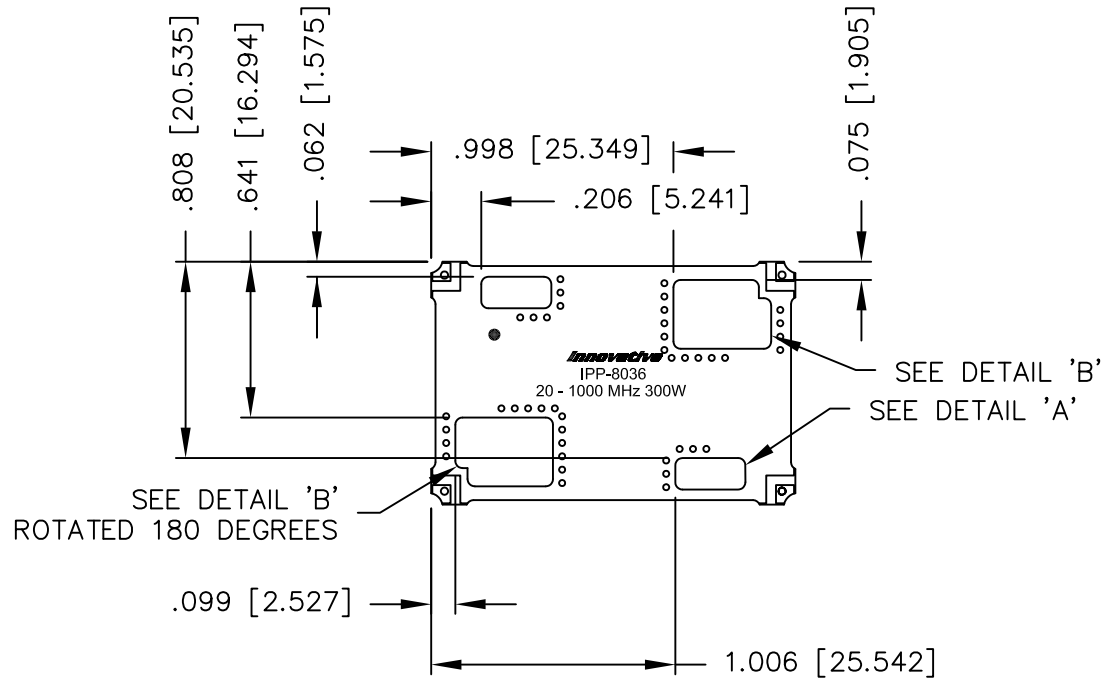
PORT CONFIGURATION			
INPUT	OUTPUT	FORWARD COUPLED	REFLECTED COUPLED
J1	J2	J3	J4
J2	J1	J4	J3

MATERIAL	DWN S.Cornell	DATE 6-14-10	Innovative Power Products		
FINISH	ENG DG	DATE 6-10			
SEE FINISH CHART	MANUF	DATE	TITLE OUTLINE		
TOLERANCE	CAGE CODE: 437R2		SMD COUPLER, DDC, 20 - 1000 MHz. 300W		
.XX ±.02 [.50] .XXX ±.010 [.254] ANG. ±1/2°	SHEET 1 OF 2	SCALE 2:1	SIZE B	P/N IPP-8036*	REV. M

UNAUTHORIZED USE OF THIS
DRAWING IS STRICTLY PROHIBITED

DAR	REV	DESCRIPTION	APPVD	DATE
5113	K	SEE DAR	DG	8-14
5822	L	SEE DAR	DG	10-15
5999	M	SEE DAR	DG	2-16

POCKET DETAIL



MATERIAL	DWN S.Cornell	DATE 6-14-10	Innovative <i>Power</i> Products		
	ENG DG	DATE 6-10			
FINISH SEE FINISH CHART	MANUF	DATE	TITLE OUTLINE		
	CAGE CODE: 437R2		SMD COUPLER, DDC, 20 - 1000 MHz. 300W		
TOLERANCE IN [MM]	.XX ±.02 [.50]	SHEET OF 2 2	SCALE 2:1	SIZE	REV. M
	.XXX ±.010 [.254]			P/N	
ANG. ±1/2°				IPP-8036*	