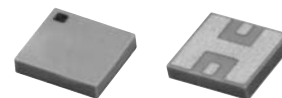


Ceramic Low Pass Filter

DC to 3300 MHz

NEW!
LFTC-3300



BLUE CELL™

CASE STYLE: FR933
PRICE: \$3.75 ea. QTY (10-49)

Maximum Ratings

Operating Temperature	-55°C to 100°C
Storage Temperature	-55°C to 125°C

Pin Connections

RF IN	2**
RF OUT	5**
GROUND	1,3,4,6

** RF IN & RF OUT can be interchanged

Features

- miniature size, 0.15"X0.15"X.028"
- low profile, .028" height
- high power handling, 10W

Applications

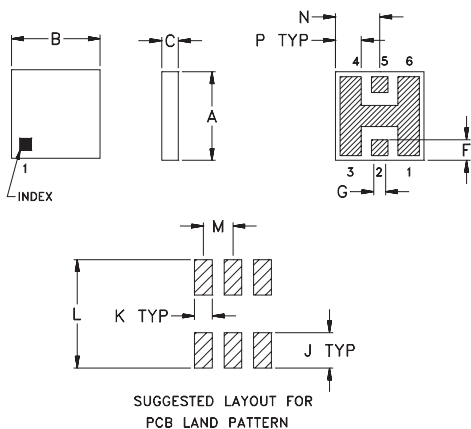
- harmonic rejection
- internal rejection
- receivers & transmitters

Low Pass Filter Electrical Specifications (T_{AMB}=25°C)

MODEL NO.	PASSBAND (MHz) (loss < 1 dB) Typ.	f _{co} , MHz Nom. (loss 3 dB) Typ.	STOP BAND (MHz) (> 20 dB) (> 40 dB)	f _{r20dB} Typ.	VSWR (:1) Passband Typ.	POWER INPUT* (W)	MARKING	NO. OF SECTIONS
LFTC-3300	DC-3300	4060	5600	10000	1.2	10	LF9	7

* Derate linearly to 4W at 100°C ambient

Outline Drawing

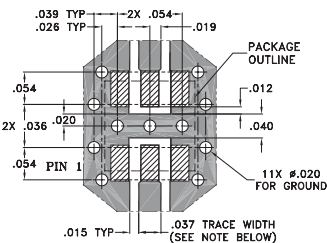


TOLERANCE UNLESS OTHERWISE STATED
2 PLACES DECIMAL: ±.01
3 PLACES DECIMAL: ±.005

Outline Dimensions (inch)

A	B	C	D	E	F	G	H	J	K	L	M	N	P	wt. grams
.150	.150	.028	—	—	.035	.028	—	.060	.030	.184	.050	.075	.044	0.15
3.81	3.81	0.71	—	—	0.89	0.71	—	1.52	0.76	4.67	1.27	1.91	1.12	0.15

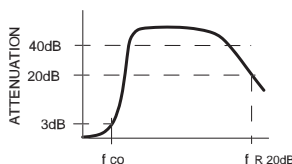
Demo Board MCL P/N: TB-233 Suggested PCB Layout (PL-112)



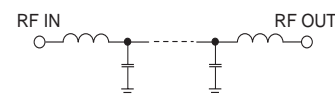
NOTE: TRACE WIDTH IS SHOWN FOR ROGERS RO4350 WITH DIELECTRIC THICKNESS .020" ± .0015".
COPPER: 1/2 OZ. EACH SIDE.
FOR OTHER MATERIALS TRACE WIDTH MAY NEED TO BE MODIFIED.

- DENOTES PCB COPPER LAYOUT
- ▨ DENOTES COPPER LAND PATTERN FREE OF SOLDERMASK

typical frequency response



schematic



Typical Performance Data at 25°C

Frequency (MHz)	Insertion Loss (dB)	VSWR (:1)
100.00	0.08	1.05
1000.00	0.29	1.24
1600.00	0.34	1.10
2000.00	0.44	1.15
2600.00	0.60	1.21
3200.00	0.76	1.15
3500.00	0.95	1.14
4060.00	3.16	3.16
4600.00	10.72	16.69
5000.00	16.54	44.51
5600.00	24.07	118.44
7000.00	36.57	38.64
8000.00	27.88	23.45
9000.00	22.32	22.03
10000.00	19.50	21.00

